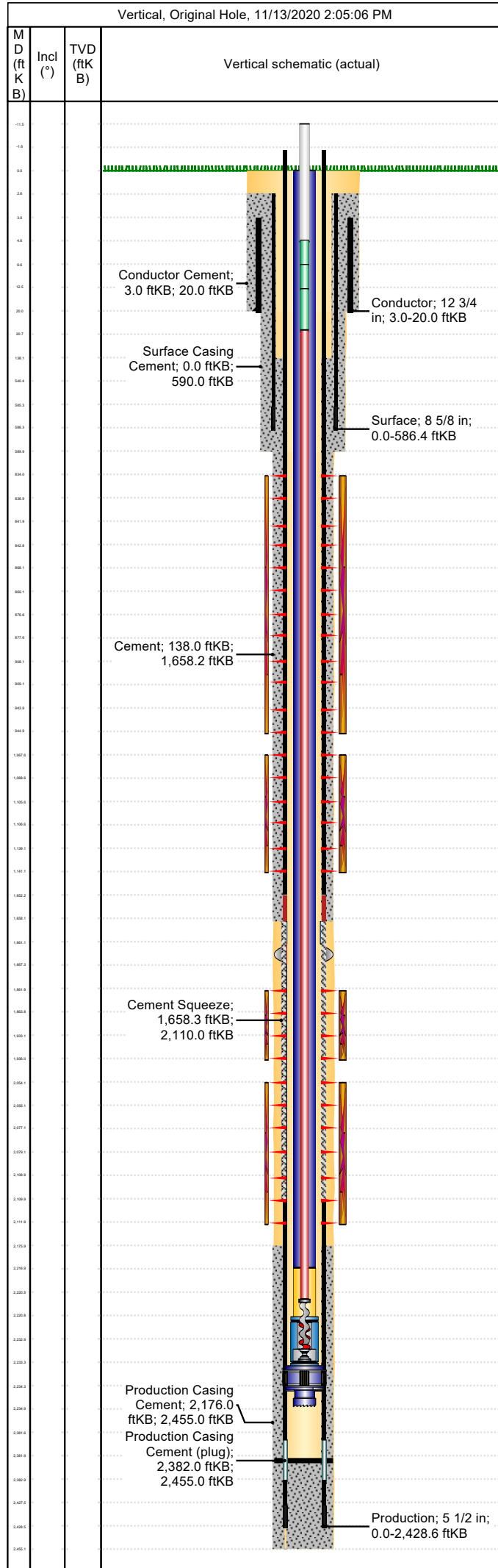


Well Name: Apache Canyon 18-16

Conductor

API/UWI 05071089280000	Location T34S-R67W-S18	Field Name Purgatoire River	Permit Number 20063025	State/Province Colorado	Well Configuration Type Vertical
Gr Elev (ft) 7,898.00	Casing Flange Elevation (ft)	KB-Ground Distance (ft) 0.00	KB-Casing Flange Distance (ft)	Spud Date 1/30/2007 11:45	Rig Release Date 2/2/2007 23:30



<b>Wellbore</b>									
Wellbore Name			Profile Type			Vertical Section Direction (°)			
Section Des		Size (in)		Act Top (ftKB)		Act Btm (ftKB)			
<b>Kick Offs &amp; Key Depths</b>									
Type		Top Depth (ftKB)			Depth Top (TVD) (ftKB)				
<b>Wellhead</b>									
Type									
Des		Make		Model		SN		WP Top (psi)	
<b>Last Mud Check</b>									
Date	Type	Depth (ftKB)	Dens (lb/gal)	Vis (s/qt)	Gel 10s (lb/100ft²)	Gel 10m (lb/100ft²)	PV (cP)	YP (lb/100ft²)	
<b>Casing</b>									
Casing Description Conductor			Run Date 1/30/2007 12:45		Set Depth (ftKB) 20.0		Wellbore Original Hole		
Centralizers None				Scratchers None					
Jts	Item Des	OD (in)	ID (in)	Wt (lb/ft)	Grade	Len (ft)	Top (ftKB)	Btm (ftKB)	
1	Casing Joints	12 3/4	12.00	29.31	L/S	17.00	3.0	20.0	
Casing Description Surface			Run Date 1/31/2007 00:00		Set Depth (ftKB) 586.4		Wellbore Original Hole		
Centralizers 3 - Latch-on				Scratchers 2 - Turbos					
Jts	Item Des	OD (in)	ID (in)	Wt (lb/ft)	Grade	Len (ft)	Top (ftKB)	Btm (ftKB)	
1	Casing collar BGL					2.50	0.0	2.5	
12	Casing Joints	8 5/8	8.10	24.00	J-55	537.77	2.5	540.3	
1	Insert float valve	8 5/8	8.10	24.00	J-55	0.00	540.3	540.3	
1	Casing Joints	8 5/8	8.10	24.00	J-55	45.15	540.3	585.4	
1	Guide Shoe	8 5/8	8.10	24.00	J-55	1.00	585.4	586.4	
Casing Description Production			Run Date 2/2/2007 23:00		Set Depth (ftKB) 2,428.6		Wellbore Original Hole		
Centralizers 13 - Latch-on				Scratchers 3 - Turbos & 4 - cement baskets					
Jts	Item Des	OD (in)	ID (in)	Wt (lb/ft)	Grade	Len (ft)	Top (ftKB)	Btm (ftKB)	
1	Collar AGL					-1.50	0.0	-1.5	
37	Casing Joints	5 1/2	4.95	15.50	J-55	1,653.75	-1.5	1,652.3	
1	Casing Pup Joint	5 1/2	4.95	15.50	J-55	6.00	1,652.3	1,658.3	
1	Stage Tool	5 1/2	4.95	15.50	J-55	3.00	1,658.3	1,661.3	
1	External Casing Packer	5 1/2	4.95	15.50	J-55	6.00	1,661.3	1,667.3	
16	Casing Joints	5 1/2	4.95	15.50	J-55	714.41	1,667.3	2,381.7	
1	Float Collar	5 1/2	4.95	15.50	J-55	1.15	2,381.7	2,382.8	
1	Casing Joints	5 1/2	4.95	15.50	J-55	44.75	2,382.8	2,427.6	
1	Float Shoe	5 1/2	4.95	15.50	J-55	1.00	2,427.6	2,428.6	
<b>Cement: &lt;Description?&gt;</b>									
Cementing Start Date			Cementing End Date			Wellbore			
Evaluation Method			Cement Evaluation Results						
Comment									
<b>Cement Stage: &lt;Description?&gt;</b>									
Top Depth (ftKB)		Bottom Depth (ftKB)		Full Return?	Vol Cement	Top Plug?		Bottom Plug?	
Initial Pump Rate (bbl/min)		Final Pump Rate (bbl/min)		Avg Pump Rate (bbl/min)		Final Pump Pressure (psi)		Plug Bump Pressure (psi)	
Pipe Reciprocated?		Stroke (ft)		Reciprocation Rate (spm)		Pipe Rotated?		Pipe RPM (rpm)	
Tagged Depth (ftKB)		Tag Method		Depth Plug Drilled Out To		Drill Out Diameter (in)		Drill Out Date	

API/UWI 05071089280000	Location T34S-R67W-S18	Field Name Purgatoire River	Permit Number 20063025	State/Province Colorado	Well Configuration Type Vertical
Gr Elev (ft) 7,898.00	Casing Flange Elevation (ft)	KB-Ground Distance (ft) 0.00	KB-Casing Flange Distance (ft)	Spud Date 1/30/2007 11:45	Rig Release Date 2/2/2007 23:30

Vertical, Original Hole, 11/13/2020 2:05:06 PM			
M D (ft K B)	Incl (°)	TVD (ft K B)	Vertical schematic (actual)
-11.2			
-1.6			
0.0			
2.0			
2.0			
4.0			
6.0			
10.0			Conductor Cement; 3.0 ftKB; 20.0 ftKB
20.0			Conductor; 12 3/4 in; 3.0-20.0 ftKB
20.7			
126.1			Surface Casing Cement; 0.0 ftKB; 590.0 ftKB
540.4			
586.3			Surface; 8 5/8 in; 0.0-586.4 ftKB
586.9			
826.0			
826.4			
841.0			
842.0			
866.1			
866.1			
876.0			
877.0			Cement; 138.0 ftKB; 1,658.2 ftKB
906.1			
906.1			
940.0			
940.0			
1,007.0			
1,008.0			
1,105.0			
1,106.0			
1,126.1			
1,141.1			
1,622.2			
1,626.1			
1,661.1			
1,667.3			
1,667.0			
1,667.0			Cement Squeeze; 1,658.3 ftKB; 2,110.0 ftKB
1,667.0			
1,667.0			
1,667.0			
2,054.1			
2,056.1			
2,077.1			
2,079.1			
2,106.0			
2,106.0			
2,111.0			
2,151.0			
2,246.0			
2,246.0			
2,250.5			
2,250.0			
2,250.0			
2,250.0			
2,250.0			
2,254.0			
2,254.0			Production Casing Cement; 2,176.0 ftKB; 2,455.0 ftKB
2,361.0			Production Casing Cement (plug); 2,382.0 ftKB; 2,455.0 ftKB
2,361.0			
2,360.0			
2,407.0			
2,408.0			Production; 5 1/2 in; 0.0-2,428.6 ftKB
2,450.1			

Cement Fluid: <Description?>						
Fluid Type	Fluid Description			Amount (sack)	Class	Volume Pumped (bbl)
Estimated Top (ftKB)	Est Btm (ftKB)	Yield (ft³/sack)	Mix H2O Ratio (gal/sack)		Free Water (%)	
Density (lb/gal)	Plastic Viscosity (cP)		Thickening Time (hr)		1st Compressive Strength (psi)	
Cement Fluid Additives						
Add		Type			Conc	