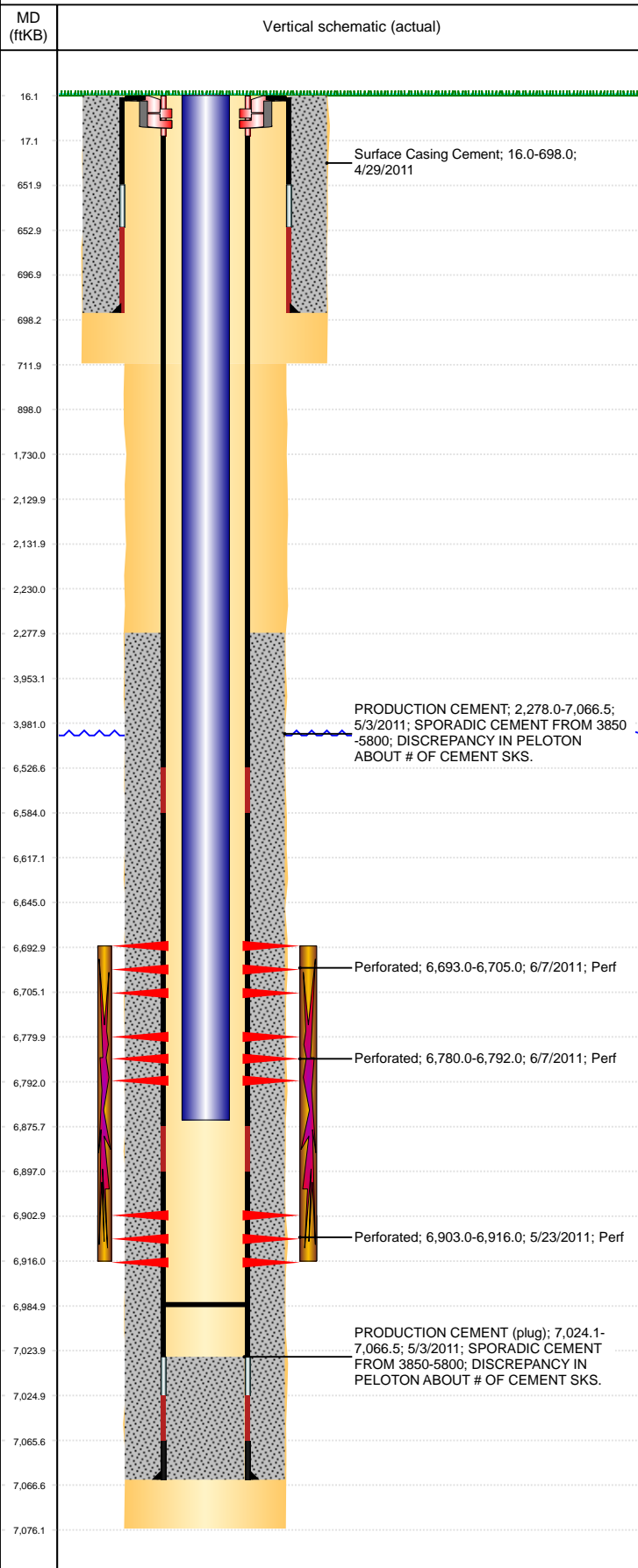


Well Name: MARIE D04-20

VERTICAL, ORIGINAL HOLE, 7/6/2021 5:47:38 PM



Well Header

API 05-123-33133	Business Unit DJ BASIN	District 15	Well Config VERTICAL
KB - GL / MSL (ft... 16.00	Spud Date 4/28/2011	P & A Date	Well Production Status PR
SoRT No			

Comment

Surface Location (Congressional)

Qtr 3 SE	Qtr 4 NW	Section 4	Twnshp 3	Twnsh... N	Range 64	Rng E... W	Actual Latitude (°) 40.25458903	Actual Longitude (°) -104.56068597
-------------	-------------	--------------	-------------	---------------	-------------	---------------	------------------------------------	---------------------------------------

Wellbore Sections

Section Des	Size (in)	Act Top, MD (ftKB)	Act Btm, MD (ftKB)
SURFACE	12 1/4	16	712
PRODUCTION	7 7/8	712	7,076

Casing Strings

Csg Des	Run Date	OD (in)	Wt/Len (lb/ft)	Grade	Top, MD (ftKB)	MD (ftKB)
Surface	4/29/2011	8 5/8	24.00	J-55	16.1	698.0
PRODUCTION	5/2/2011	4 1/2	11.60	M-80	16.0	7,066.5

Cement

Des	Start Date	Top (ftKB)	Btm (ftKB)
Surface Casing Cement	4/29/2011	16.0	698.0
PRODUCTION CEMENT	5/3/2011	2,278.0	7,066.5

Zone Statuses

Zone Name	Status Date	Status	Fluid Type	Job	Prod Method
CODELL	6/9/2011	PR		DRILLING/COMPLETION - ORIGINAL, 4/27/2011...	
NIOBRARA	6/9/2011	PR		DRILLING/COMPLETION - ORIGINAL, 4/27/2011...	

Perforation Data

Linked Zone	Bnch/Stg	Entered Shot Total	Top (ftKB)	Btm (ftKB)	Date
NIOBRARA, ORIGINAL HOLE	B	24	6,693.00	6,705.00	6/7/2011
NIOBRARA, ORIGINAL HOLE	C	24	6,780.00	6,792.00	6/7/2011
CODELL, ORIGINAL HOLE		52	6,903.00	6,916.00	5/23/2011

Stimulation Intervals

Zone	Start Date	Top (ftKB)	Btm (ftKB)
NIOBRARA, ORIGINAL HOLE	6/7/2011	6,693.0	6,916.0
CODELL, ORIGINAL HOLE	6/7/2011	6,903.0	6,916.0

Other In Hole

Run Date	Des	Make	OD (in)	Top (ftKB)	Btm (ftKB)

Logs

Date	Type	Top, MD (ftKB)	Btm, MD (ftKB)
5/18/2011	CBL/CCL/GR	2,278.0	6,991.0

Plug Back Total Depths

Date	Type	Com	Depth (ftKB)
5/18/2011	CEMENT PLUG	DEPTH LOGGER	6,992.0
10/10/2011	PLUG REMNANTS		6,985.0