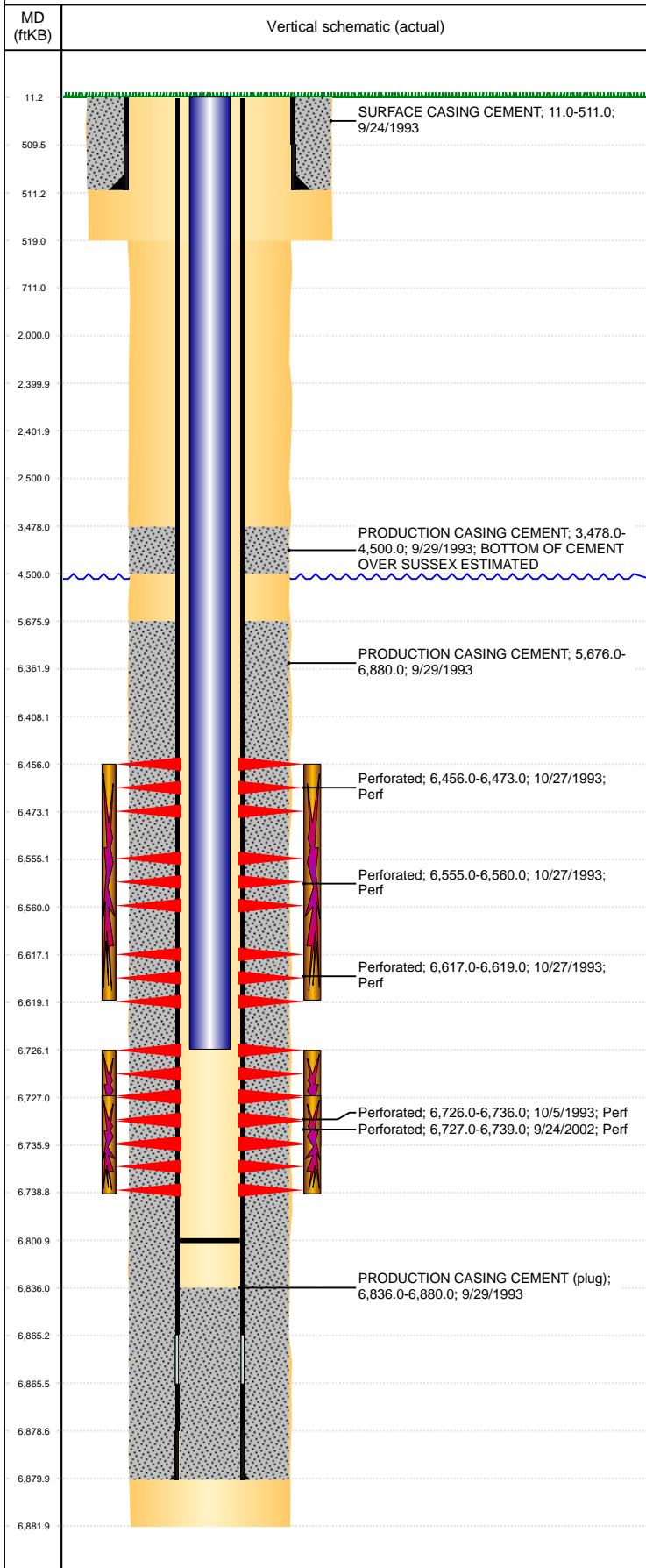


**Well Name: LOLOFF 35-06**

VERTICAL, ORIGINAL HOLE, 7/6/2021 4:42:35 PM



Well Header									
API 05-123-17428		Business Unit DJ BASIN			District 15		Well Config VERTICAL		
KB - GL / MSL (ft... 11.00		Spud Date 9/23/1993		P & A Date		Well Production Status PR			SoRT No
Comment NO DRILLING INFORMATION IN WELL FILE. DATES ESTIMATED FROM STATE REPORTS AND CASING TALLIES.									
Surface Location (Congressional)									
Qtr 3 SE	Qtr 4 NW	Section 35	Twnshp 5	Twنش... N	Range 64	Rng E/... W	Actual Latitude (°) 40.35718891	Actual Longitude (°) -104.51899714	
Wellbore Sections									
Section Des			Size (in)			Act Top, MD (ftKB)		Act Btm, MD (ftKB)	
SURFACE			12 1/4			11		519	
PRODUCTION			7 7/8			519		6,882	
Casing Strings									
Csg Des		Run Date		OD (in)	Wt/Len (lb/ft)	Grade	Top, MD (ftKB)	MD (ftKB)	
Surface		9/24/1993		8 5/8	24.00	J-55	11.0	511.0	
Production		9/29/1993		3 1/2	7.70	M-75	11.0	6,880.0	
Cement									
Des				Start Date		Top (ftKB)		Btm (ftKB)	
SURFACE CASING CEMENT				9/24/1993		11.0		511.0	
PRODUCTION CASING CEMENT				9/29/1993		3,478.0		4,500.0	
PRODUCTION CASING CEMENT				9/29/1993		5,676.0		6,880.0	
Zone Statuses									
Zone Name	Status Date	Status	Fluid Type	Job				Prod Method	
NIOBRARA	11/15/1993	PR	Water	DRILLING/COMPLETION - ORIGINAL, 9/23/1993...				Flowing	
NIOBRARA	1/30/2010	PR							
CODELL	11/13/2015	PR							
CODELL	2/9/2016	PR							
Perforation Data									
Linked Zone		Bnch/Stg	Entered Shot Total	Top (ftKB)		Btm (ftKB)		Date	
NIOBRARA, ORIGINAL HOLE		A	8	6,456.00		6,473.00		10/27/1993	
NIOBRARA, ORIGINAL HOLE		B	12	6,555.00		6,560.00		10/27/1993	
NIOBRARA, ORIGINAL HOLE		C	4	6,617.00		6,619.00		10/27/1993	
CODELL, ORIGINAL HOLE			20	6,726.00		6,736.00		10/5/1993	
CODELL, ORIGINAL HOLE			48	6,727.00		6,739.00		9/24/2002	
Stimulation Intervals									
Zone			Start Date			Top (ftKB)		Btm (ftKB)	
NIOBRARA, ORIGINAL HOLE			10/28/1993			6,456.0		6,619.0	
CODELL, ORIGINAL HOLE			10/20/1993			6,726.0		6,736.0	
CODELL, ORIGINAL HOLE			10/4/2002			6,727.0		6,739.0	
Other In Hole									
Run Date	Des			Make		OD (in)	Top (ftKB)	Btm (ftKB)	
Logs									
Date	Type					Top, MD (ftKB)		Btm, MD (ftKB)	
9/29/1993	COMPENSATED DENSITY					4,150.0		6,880.0	
9/29/1993	INDUCTION					511.0		6,880.0	
10/5/1993	CBL/CCL/GR					5,500.0		6,830.0	
8/15/2016	GYRO					0.0		6,600.0	
Plug Back Total Depths									
Date	Type		Com					Depth (ftKB)	
9/23/2002	FILL		TAGGED FILL					6,812.0	
11/14/2007	FILL		TAGGED W/210 JNTS TUBING					6,801.0	