

MARALEX RESOURCES, INC.

Operator # 53255
Current Wellbore 5/2021

WELL NAME USA 1-28 DF
LOCATION SENW Sec 28 T7S R99W 6 PM
GPS 39.419850 -108.447805 **PDOP** 2.5
GPS OPERATOR M. Nastal **DATE** 11/24/2010
FEDERAL LEASE No. COC12828B
ELEVATION 6400' **KB** 11'

FIELD DRY FORK
COUNTY GARFIELD
API # 05-045-06288
FORMATION DAKOTA
COGCC LOCATION ID 322450
COGCC FACILITY ID 210532

CASING

SURFACE

SIZE & WT 8⁵/₈" 24#
SET @ 206'
HOLE SIZE 12¹/₄"
CEMENT 160 SXS
TOC @ surface (Calculated)

PRODUCTION

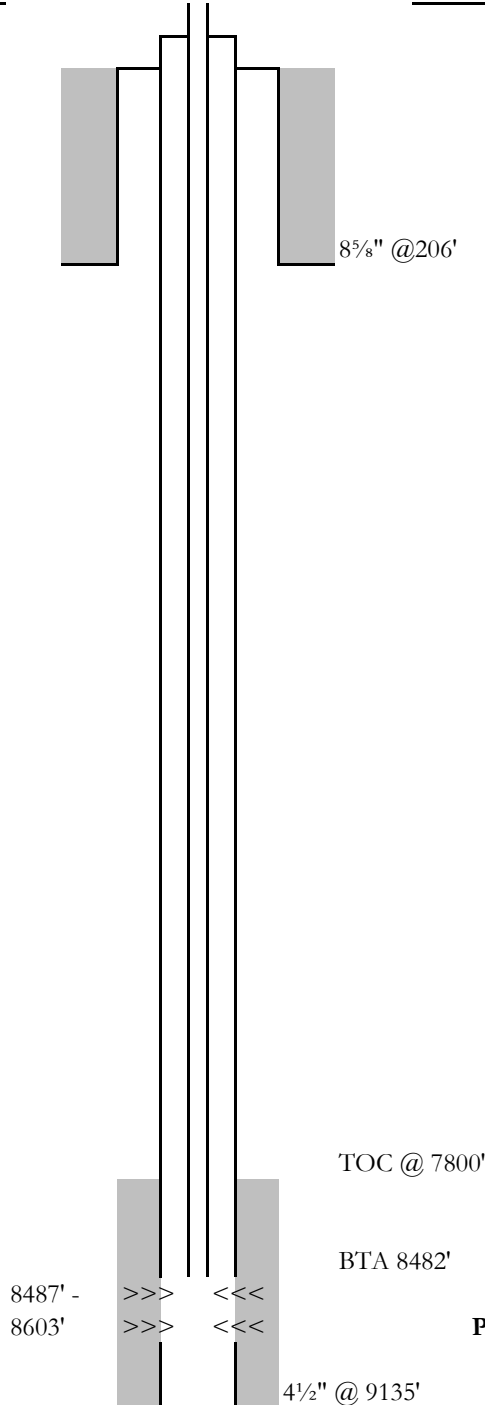
SIZE & WT 4¹/₂" 11.6#
SET @ 9135'
HOLE SIZE 7⁷/₈"
CEMENT 200 SXS
TOC @ 7800' (Calculated)

PERFORATIONS

8487' - 8603' 20 HOLES

FORMATION TOPS

DAKOTA 8150'
MORRISON 8640'



TUBING

2³/₈" J-55 4.7# @ 8482'
PER 1981 COMPLETION REPORT

TOC @ 7800'

BTB 8482'

PBTD 9014'

4¹/₂" @ 9135'

TOTAL DEPTH 9137'