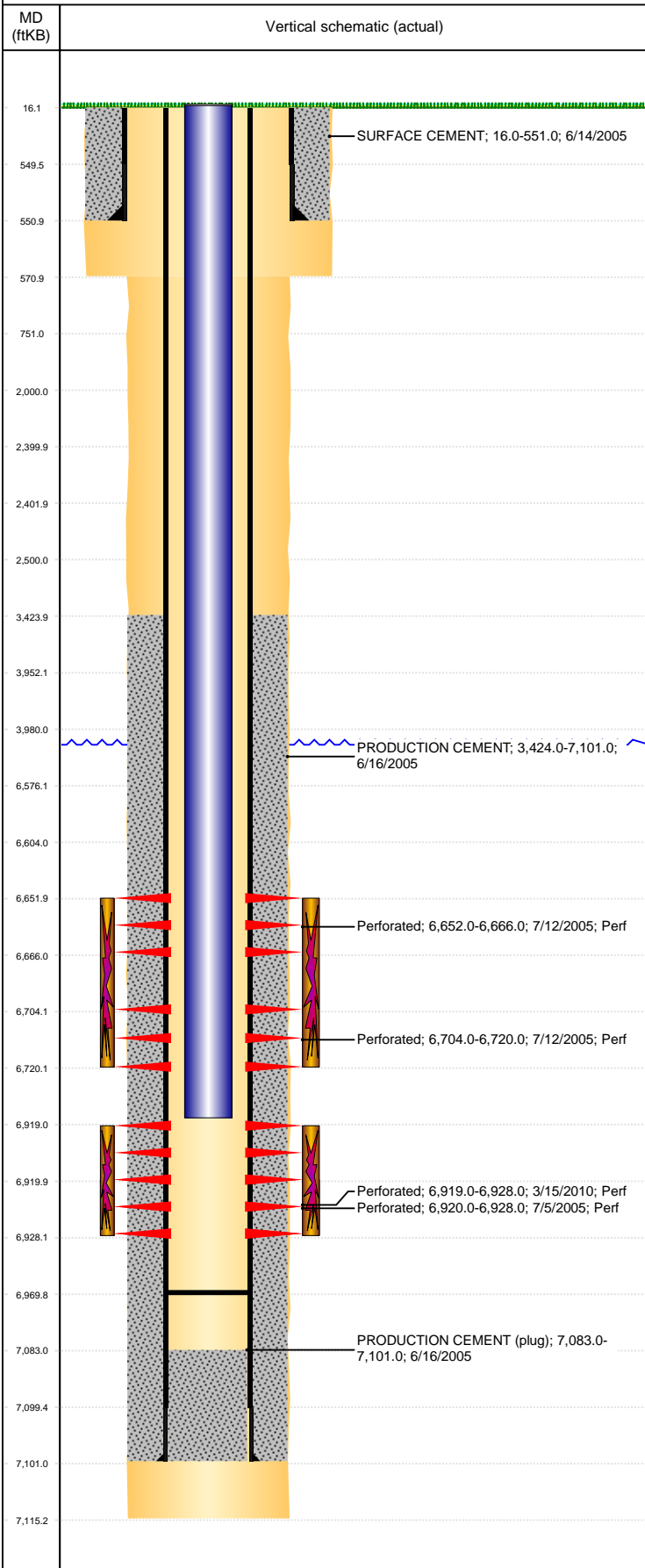


**Well Name: MARIE D04-25**

VERTICAL, ORIGINAL HOLE, 7/1/2021 5:46:50 PM



Well Header									
API 05-123-22934		Business Unit DJ BASIN		District 15		Well Config VERTICAL			
KB - GL / MSL (ft... 16.00		Spud Date 6/13/2005		P & A Date		Well Production Status PR			SoRT No
Comment PUSHED CFT TO 6979'									
Surface Location (Congressional)									
Qtr 3 NE	Qtr 4 SW	Section 4	Twnshp 3	Twnsh... N	Range 64	Rng E/... W	Actual Latitude (°) 40.25119261	Actual Longitude (°) -104.56042590	
Wellbore Sections									
Section Des			Size (in)			Act Top, MD (ftKB)		Act Btm, MD (ftKB)	
SURFACE			12 1/4			16		571	
PRODUCTION			7 7/8			571		7,115	
Casing Strings									
Csg Des			Run Date		OD (in)	Wt/Len (lb/ft)	Grade	Top, MD (ftKB)	MD (ftKB)
Surface Casing			6/14/2005		8 5/8	24.00	J-55	16.0	551.0
Production			6/16/2005		4 1/2	11.60	M-80	16.0	7,101.0
Cement									
Des					Start Date		Top (ftKB)		Btm (ftKB)
SURFACE CEMENT					6/14/2005		16.0		551.0
PRODUCTION CEMENT					6/16/2005		3,424.0		7,101.0
Zone Statuses									
Zone Name	Status Date	Status	Fluid Type	Job				Prod Method	
CODELL	5/18/2010	PR	Water	RE-FRAC, 3/12/2010 06:00				Flowing	
CODELL	10/7/2016	SI							
NIOBRARA	6/19/2009	PR							
NIOBRARA	9/21/2017	PR							
Perforation Data									
Linked Zone		Bnch/Stg	Entered Shot Total	Top (ftKB)		Btm (ftKB)		Date	
NIOBRARA, ORIGINAL HOLE			84	6,652.00		6,666.00		7/12/2005	
NIOBRARA, ORIGINAL HOLE			96	6,704.00		6,720.00		7/12/2005	
CODELL, ORIGINAL HOLE			36	6,919.00		6,928.00		3/15/2010	
CODELL, ORIGINAL HOLE			32	6,920.00		6,928.00		7/5/2005	
Stimulation Intervals									
Zone				Start Date		Top (ftKB)		Btm (ftKB)	
NIOBRARA, ORIGINAL HOLE				7/12/2005		6,652.0		6,720.0	
CODELL, ORIGINAL HOLE				3/23/2010		6,919.0		6,928.0	
CODELL, ORIGINAL HOLE				7/12/2005		6,920.0		6,928.0	
Other In Hole									
Run Date		Des			Make		OD (in)	Top (ftKB)	Btm (ftKB)
Logs									
Date		Type				Top, MD (ftKB)		Btm, MD (ftKB)	
6/16/2005		COMPENSATED DENSITY				4,150.0		6,995.0	
6/16/2005		INDUCTION				4,150.0		7,115.0	
6/27/2005		CBL/CCL/GR				3,200.0		7,049.0	
Plug Back Total Depths									
Date		Type		Com				Depth (ftKB)	
3/15/2010		PLUG REMNANTS		42' OF RAT HOLE				6,971.0	
3/29/2010		FILL		41' OF RATHOLE.				6,969.7	