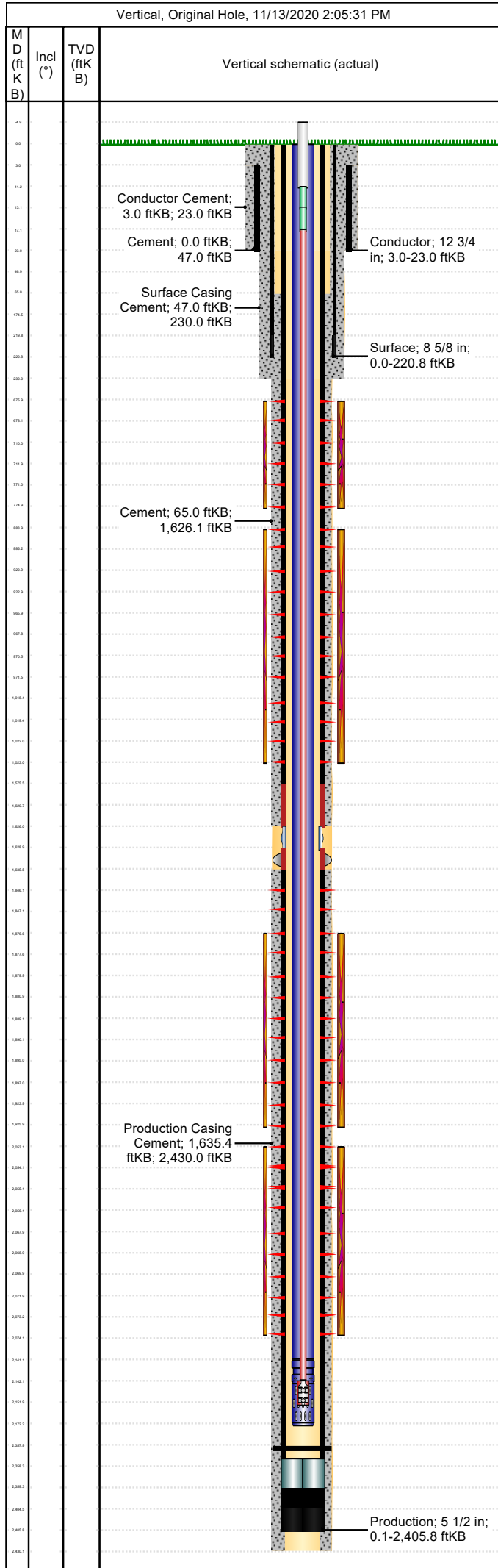


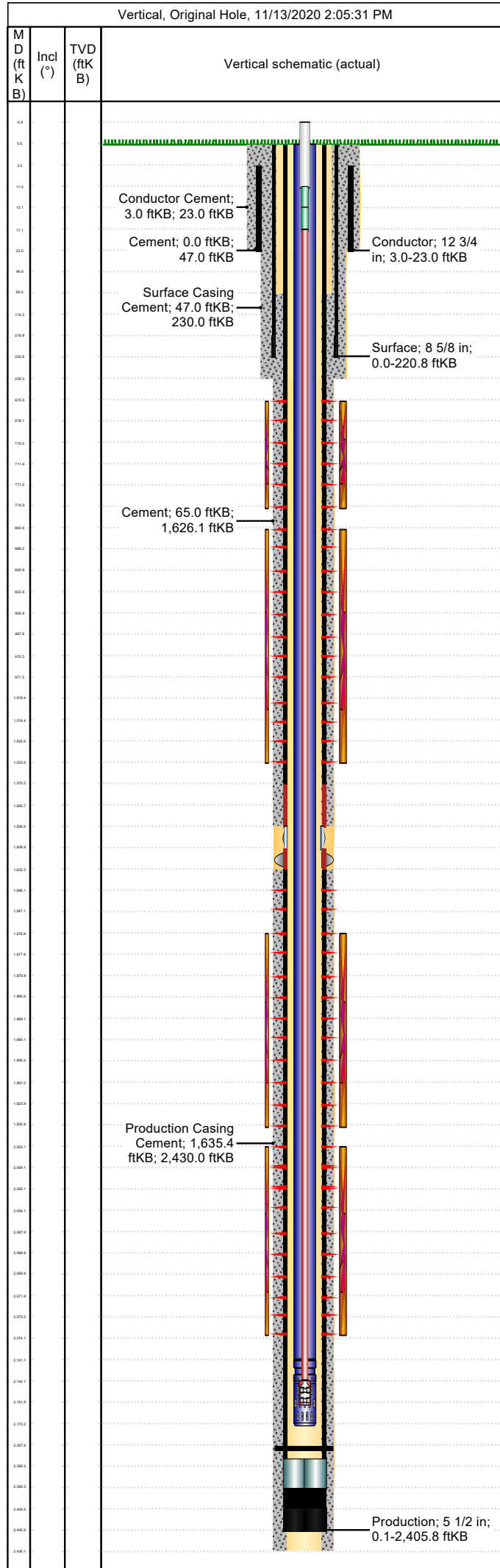
API/UWI 05071088850000	Location T34S-R68W-S13	Field Name Purgatoire River	Permit Number 20062614	State/Province Colorado	Well Configuration Type Vertical
Gr Elev (ft) 7,820.00	Casing Flange Elevation (ft)	KB-Ground Distance (ft) 0.00	KB-Casing Flange Distance (ft)	Spud Date 8/12/2006 09:30	Rig Release Date 8/14/2006 19:00



Wellbore									
Wellbore Name			Profile Type			Vertical Section Direction (°)			
Section Des		Size (in)		Act Top (ftKB)		Act Btm (ftKB)			
<b>Kick Offs &amp; Key Depths</b>									
Type		Top Depth (ftKB)			Depth Top (TVD) (ftKB)				
<b>Wellhead</b>									
Type									
Des		Make		Model		SN		WP Top (psi)	
<b>Last Mud Check</b>									
Date	Type	Depth (ftKB)	Dens (lb/gal)	Vis (s/qt)	Gel 10s (lb/100ft²)	Gel 10m (lb/100ft²)	PV (cP)	YP (lb/100ft²)	
<b>Casing</b>									
Casing Description Conductor			Run Date 8/12/2006 10:15		Set Depth (ftKB) 23.0		Wellbore Original Hole		
Centralizers					Scratchers				
Jts	Item Des	OD (in)	ID (in)	Wt (lb/ft)	Grade	Len (ft)	Top (ftKB)	Btm (ftKB)	
1	Casing Joints	12 3/4	12.00	35.00	L/S	20.00	3.0	23.0	
Casing Description Surface			Run Date 8/12/2006 17:15		Set Depth (ftKB) 220.8		Wellbore Original Hole		
Centralizers					Scratchers				
Jts	Item Des	OD (in)	ID (in)	Wt (lb/ft)	Grade	Len (ft)	Top (ftKB)	Btm (ftKB)	
5	Casing Joint	8 5/8	8.10	24.00	J-55	174.55	0.0	174.6	
1	Insert Float Valve	8 5/8	8.10	24.00	J-55	0.00	174.6	174.6	
1	Casing Joint	8 5/8	8.10	24.00	J-55	45.25	174.6	219.8	
1	Guide Shoe	8 5/8	8.10	24.00	J-55	1.00	219.8	220.8	
Casing Description Production			Run Date 8/14/2006 18:15		Set Depth (ftKB) 2,405.8		Wellbore Original Hole		
Centralizers					Scratchers				
Jts	Item Des	OD (in)	ID (in)	Wt (lb/ft)	Grade	Len (ft)	Top (ftKB)	Btm (ftKB)	
35	Casing Joints	5 1/2	4.95	15.50	J-55	1,575.41	0.1	1,575.5	
1	Casing Joints	5 1/2	4.95	15.50	J-55	45.13	1,575.5	1,620.6	
1	Casing Pup Joint	5 1/2	4.95	15.50	J-55	5.50	1,620.6	1,626.1	
1	Stage Collar	5 1/2	4.95	15.50	J-55	3.00	1,626.1	1,629.1	
1	External Casing Packer	5 1/2	4.95	15.50	J-55	6.50	1,629.1	1,635.6	
16	Casing Joints	5 1/2	4.95	15.50	J-55	722.55	1,635.6	2,358.1	
1	Float Collar	5 1/2	0.00	15.50	J-55	1.25	2,358.1	2,359.4	
1	Casing Joints	5 1/2	0.00	15.50	J-55	45.18	2,359.4	2,404.6	
1	Float Shoe	5 1/2	0.00	15.50	J-55	1.25	2,404.6	2,405.8	
<b>Cement: &lt;Description?&gt;</b>									
Cementing Start Date			Cementing End Date			Wellbore			
Evaluation Method			Cement Evaluation Results						
Comment									
<b>Cement Stage: &lt;Description?&gt;</b>									
Top Depth (ftKB)		Bottom Depth (ftKB)		Full Return?	Vol Cement	Top Plug?		Bottom Plug?	
Initial Pump Rate (bbl/min)		Final Pump Rate (bbl/min)		Avg Pump Rate (bbl/min)		Final Pump Pressure (psi)		Plug Bump Pressure (psi)	
Pipe Reciprocated?		Stroke (ft)		Reciprocation Rate (spm)		Pipe Rotated?		Pipe RPM (rpm)	
Tagged Depth (ftKB)		Tag Method		Depth Plug Drilled Out To		Drill Out Diameter (in)		Drill Out Date	

**Well Name: Apache Canyon 13-07**

API/UWI 05071088850000	Location T34S-R68W-S13	Field Name Purgatoire River	Permit Number 20062614	State/Province Colorado	Well Configuration Type Vertical
Gr Elev (ft) 7,820.00	Casing Flange Elevation (ft)	KB-Ground Distance (ft) 0.00	KB-Casing Flange Distance (ft)	Spud Date 8/12/2006 09:30	Rig Release Date 8/14/2006 19:00



**Cement Fluid: <Description?>**

Fluid Type	Fluid Description	Amount (sack)	Class	Volume Pumped (bbl)
Estimated Top (ftKB)	Est Btm (ftKB)	Yield (ft³/sack)	Mix H2O Ratio (gal/sack)	Free Water (%)
Density (lb/gal)	Plastic Viscosity (cP)	Thickening Time (hr)	1st Compressive Strength (psi)	

**Cement Fluid Additives**

Add	Type	Conc