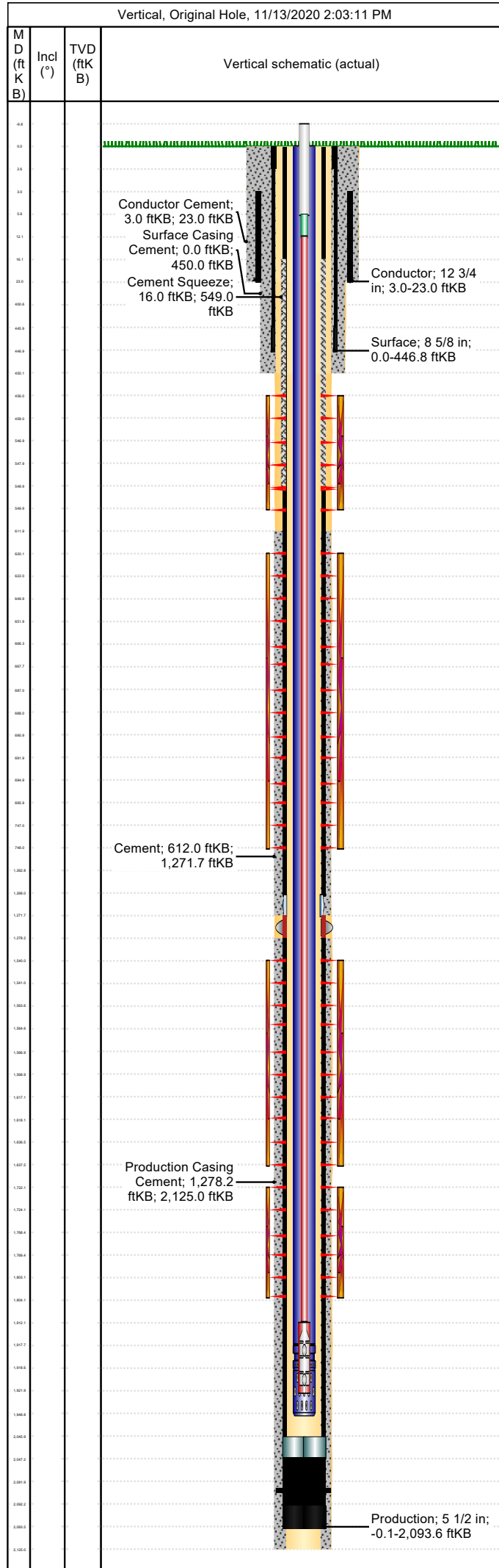


Well Name: Apache Canyon 13-01

Conductor

API/UWI 05071088210000	Location T34S-R68W-S13	Field Name Purgatoire River	Permit Number 20061870	State/Province Colorado	Well Configuration Type Vertical
Gr Elev (ft) 7,769.00	Casing Flange Elevation (ft)	KB-Ground Distance (ft) 0.00	KB-Casing Flange Distance (ft)	Spud Date 8/9/2006 14:30	Rig Release Date 8/11/2006 18:15



Wellbore									
Wellbore Name			Profile Type			Vertical Section Direction (°)			
Section Des		Size (in)		Act Top (ftKB)		Act Btm (ftKB)			
Kick Offs & Key Depths									
Type		Top Depth (ftKB)			Depth Top (TVD) (ftKB)				
Wellhead									
Type									
Des		Make		Model		SN		WP Top (psi)	
Last Mud Check									
Date	Type	Depth (ftKB)	Dens (lb/gal)	Vis (s/qt)	Gel 10s (lb/100ft²)	Gel 10m (lb/100ft²)	PV (cP)	YP (lb/100ft²)	
Casing									
Casing Description Conductor			Run Date 8/9/2006 00:00		Set Depth (ftKB) 23.0		Wellbore Original Hole		
Centralizers				Scratchers					
Jts	Item Des	OD (in)	ID (in)	Wt (lb/ft)	Grade	Len (ft)	Top (ftKB)	Btm (ftKB)	
1	Casing Joint	12 3/4	12.00	35.00	L/S	20.00	3.0	23.0	
Casing Description Surface			Run Date 8/10/2006 12:30		Set Depth (ftKB) 446.8		Wellbore Original Hole		
Centralizers				Scratchers					
Jts	Item Des	OD (in)	ID (in)	Wt (lb/ft)	Grade	Len (ft)	Top (ftKB)	Btm (ftKB)	
1	Casing Collar BGL	8 5/8				2.50	0.0	2.5	
9	Casing Joints	8 5/8	8.10	24.00	J-55	398.14	2.5	400.6	
1	Insert Float Valve	8 5/8	8.10	24.00	J-55	0.00	400.6	400.6	
1	Casing Joints	8 5/8	8.10	24.00	J-55	45.18	400.6	445.8	
1	Guide Shoe	8 5/8	8.10	24.00	J-55	1.00	445.8	446.8	
Casing Description Production			Run Date 8/11/2006 17:45		Set Depth (ftKB) 2,093.6		Wellbore Original Hole		
Centralizers				Scratchers					
Jts	Item Des	OD (in)	ID (in)	Wt (lb/ft)	Grade	Len (ft)	Top (ftKB)	Btm (ftKB)	
28	Casing Joints	5 1/2	4.95	15.50	J-55	1,262.74	-0.1	1,262.7	
1	Pup Joint	5 1/2	4.95	15.50	J-55	5.50	1,262.7	1,268.2	
1	Stage Collar	5 1/2	4.95	15.50	J-55	3.50	1,268.2	1,271.7	
1	External Casing Packer	5 1/2	4.95	15.50	J-55	6.50	1,271.7	1,278.2	
17	Casing Joints	5 1/2	4.95	15.50	J-55	767.71	1,278.2	2,045.9	
1	Float Collar	5 1/2	0.00	15.50	J-55	1.25	2,045.9	2,047.1	
1	Casing Joints	5 1/2	0.00	15.50	J-55	45.17	2,047.1	2,092.3	
1	Float Shoe	5 1/2	0.00	15.50	J-55	1.25	2,092.3	2,093.6	
Cement: <Description?>									
Cementing Start Date		Cementing End Date			Wellbore				
Evaluation Method		Cement Evaluation Results							
Comment									
Cement Stage: <Description?>									
Top Depth (ftKB)		Bottom Depth (ftKB)		Full Return?		Vol Cement		Top Plug?	
Initial Pump Rate (bbl/min)		Final Pump Rate (bbl/min)		Avg Pump Rate (bbl/min)		Final Pump Pressure (psi)		Plug Bump Pressure (psi)	
Pipe Reciprocated?		Stroke (ft)		Reciprocation Rate (spm)		Pipe Rotated?		Pipe RPM (rpm)	
Tagged Depth (ftKB)		Tag Method		Depth Plug Drilled Out To		Drill Out Diameter (in)		Drill Out Date	

API/UWI 05071088210000	Location T34S-R68W-S13	Field Name Purgatoire River	Permit Number 20061870	State/Province Colorado	Well Configuration Type Vertical
Gr Elev (ft) 7,769.00	Casing Flange Elevation (ft)	KB-Ground Distance (ft) 0.00	KB-Casing Flange Distance (ft)	Spud Date 8/9/2006 14:30	Rig Release Date 8/11/2006 18:15

Vertical, Original Hole, 11/13/2020 2:03:11 PM			
M D (ft K B)	Incl (°)	TVD (ftK B)	Vertical schematic (actual)
-4.8			
0.0			
23.0			
33.0			
59.0			Conductor Cement; 3.0 ftKB; 23.0 ftKB Surface Casing Cement; 0.0 ftKB; 450.0 ftKB Cement Squeeze; 16.0 ftKB; 549.0 ftKB
12.1			
16.1			Conductor; 12 3/4 in; 3.0-23.0 ftKB
21.0			
450.0			Surface; 8 5/8 in; 0.0-446.8 ftKB
446.8			
446.8			
451.1			
450.0			
450.0			
540.0			
547.0			
549.0			
549.0			
611.0			
620.1			
620.0			
660.0			
651.0			
666.1			
667.7			
667.0			
668.0			
668.0			
691.0			
690.0			
695.0			
747.0			Cement; 612.0 ftKB; 1,271.7 ftKB
740.0			
1,262.0			
1,260.0			
1,271.7			
1,270.2			
1,546.0			
1,541.0			
1,540.0			
1,580.0			
1,584.0			
1,580.0			
1,580.0			
1,607.1			
1,610.1			
1,600.0			
1,637.0			Production Casing Cement; 1,278.2 ftKB; 2,125.0 ftKB
1,722.1			
1,726.1			
1,760.0			
1,760.0			
1,803.1			
1,804.1			
1,912.1			
1,917.7			
1,910.0			
1,921.0			
1,940.0			
2,065.0			
2,067.0			
2,081.0			
2,080.0			
2,080.0			Production; 5 1/2 in; -0.1-2,093.6 ftKB
2,105.0			

Cement Fluid: <Description?>				
Fluid Type	Fluid Description		Amount (sack)	Class
Estimated Top (ftKB)	Est Btm (ftKB)	Yield (ft³/sack)	Mix H2O Ratio (gal/sack)	Free Water (%)
Density (lb/gal)	Plastic Viscosity (cP)	Thickening Time (hr)		1st Compressive Strength (psi)

Cement Fluid Additives		
Add	Type	Conc