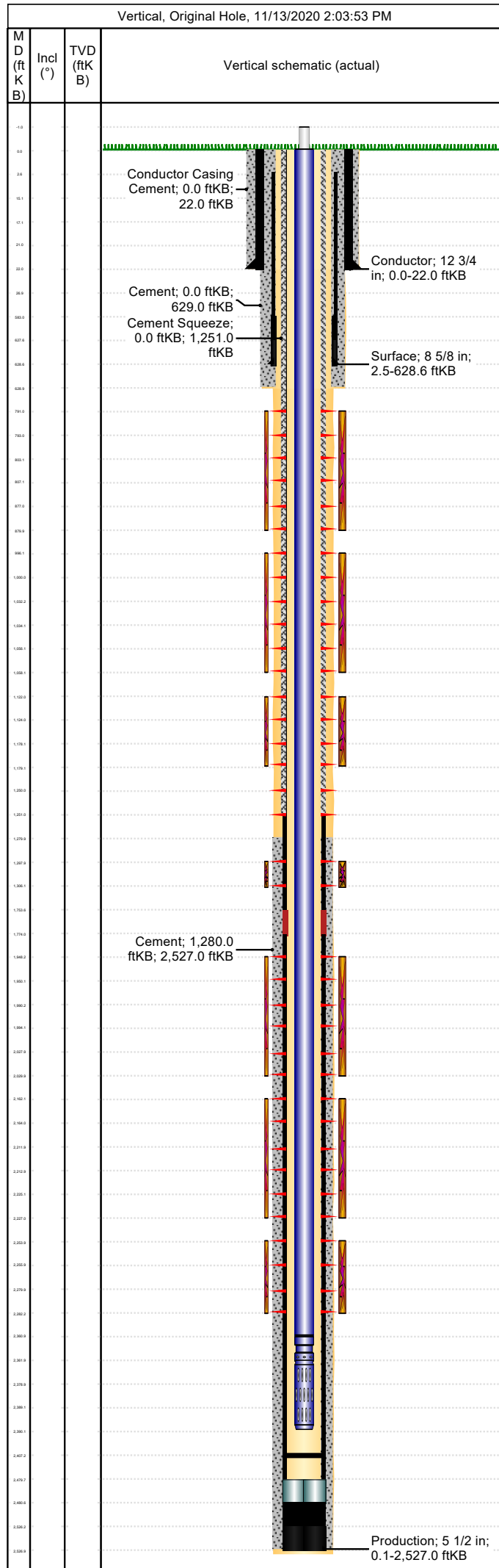


Well Name: Apache Canyon 12-10

Conductor

API/UWI 05071083900000	Location T34S-R68W-S12	Field Name Purgatoire River	Permit Number 2005162	State/Province Colorado	Well Configuration Type Vertical
Gr Elev (ft) 8,329.00	Casing Flange Elevation (ft)	KB-Ground Distance (ft) 0.00	KB-Casing Flange Distance (ft)	Spud Date 6/5/2005 00:00	Rig Release Date 6/7/2005 00:00



<b>Wellbore</b>									
Wellbore Name			Profile Type			Vertical Section Direction (°)			
Section Des		Size (in)		Act Top (ftKB)		Act Btm (ftKB)			
<b>Kick Offs &amp; Key Depths</b>									
Type		Top Depth (ftKB)			Depth Top (TVD) (ftKB)				
<b>Wellhead</b>									
Type									
Des		Make		Model		SN		WP Top (psi)	
<b>Last Mud Check</b>									
Date	Type	Depth (ftKB)	Dens (lb/gal)	Vis (s/qt)	Gel 10s (lb/100ft²)	Gel 10m (lb/100ft²)	PV (cP)	YP (lb/100ft²)	
<b>Casing</b>									
Casing Description Conductor			Run Date 6/5/2005 00:00		Set Depth (ftKB) 22.0		Wellbore Original Hole		
Centralizers				Scratchers					
Jts	Item Des	OD (in)	ID (in)	Wt (lb/ft)	Grade	Len (ft)	Top (ftKB)	Btm (ftKB)	
	Casing Joints	12 3/4	11.10			22.00	0.0	22.0	
Casing Description Surface			Run Date 6/5/2005 00:00		Set Depth (ftKB) 628.6		Wellbore Original Hole		
Centralizers				Scratchers					
Jts	Item Des	OD (in)	ID (in)	Wt (lb/ft)	Grade	Len (ft)	Top (ftKB)	Btm (ftKB)	
13	Casing Joints	8 5/8	8.10	24.00	J-55	580.51	2.5	583.0	
1	Float Valve	8 5/8				0.00	583.0	583.0	
1	Float Joint	8 5/8				44.65	583.0	627.7	
1	Guide Shoe	8 5/8				0.95	627.7	628.6	
Casing Description Production			Run Date 6/7/2005 00:00		Set Depth (ftKB) 2,527.0		Wellbore Original Hole		
Centralizers				Scratchers					
Jts	Item Des	OD (in)	ID (in)	Wt (lb/ft)	Grade	Len (ft)	Top (ftKB)	Btm (ftKB)	
39	Casing Joints	5 1/2	4.95	15.50	J-55	1,753.64	0.1	1,753.7	
1	Marker Joint	5 1/2				20.22	1,753.7	1,774.0	
16	Casing Joints	5 1/2	4.95	15.50	J-55	705.59	1,774.0	2,479.5	
1	Float Collar	5 1/2	0.00			1.15	2,479.5	2,480.7	
1	Casing Joints	5 1/2	0.00	15.50	J-55	45.55	2,480.7	2,526.2	
1	Guide Shoe	5 1/2	0.00			0.76	2,526.2	2,527.0	
<b>Cement: &lt;Description?&gt;</b>									
Cementing Start Date		Cementing End Date		Wellbore					
Evaluation Method		Cement Evaluation Results							
Comment									
<b>Cement Stage: &lt;Description?&gt;</b>									
Top Depth (ftKB)		Bottom Depth (ftKB)		Full Return?		Vol Cement		Top Plug?	
Initial Pump Rate (bbl/min)		Final Pump Rate (bbl/min)		Avg Pump Rate (bbl/min)		Final Pump Pressure (psi)		Plug Bump Pressure (psi)	
Pipe Reciprocated?		Stroke (ft)		Reciprocation Rate (spm)		Pipe Rotated?		Pipe RPM (rpm)	
Tagged Depth (ftKB)		Tag Method		Depth Plug Drilled Out To (ft)		Drill Out Diameter (in)		Drill Out Date	
<b>Cement Fluid: &lt;Description?&gt;</b>									
Fluid Type		Fluid Description				Amount (sack)		Class	
Estimated Top (ftKB)		Est Btm (ftKB)		Yield (ft³/sack)		Mix H2O Ratio (gal/sack)		Free Water (%)	
Density (lb/gal)		Plastic Viscosity (cP)		Thickening Time (hr)		1st Compressive Strength (psi)			

API/UWI 05071083900000	Location T34S-R68W-S12	Field Name Purgatoire River	Permit Number 2005162	State/Province Colorado	Well Configuration Type Vertical
Gr Elev (ft) 8,329.00	Casing Flange Elevation (ft)	KB-Ground Distance (ft) 0.00	KB-Casing Flange Distance (ft)	Spud Date 6/5/2005 00:00	Rig Release Date 6/7/2005 00:00

Vertical, Original Hole, 11/13/2020 2:03:53 PM			
M D (ft K B)	Incl (°)	TVD (ft K B)	Vertical schematic (actual)
-1.0			
0.0			
2.0			
15.1			Conductor Casing Cement; 0.0 ftKB; 22.0 ftKB
17.1			
21.0			
22.0			Conductor; 12 3/4 in; 0.0-22.0 ftKB
26.0			
55.0			Cement; 0.0 ftKB; 629.0 ftKB
62.6			Cement Squeeze; 0.0 ftKB; 1,251.0 ftKB
628.6			Surface; 8 5/8 in; 2.5-628.6 ftKB
629.0			
791.0			
792.0			
855.1			
857.1			
872.0			
876.0			
896.1			
1,000.0			
1,032.2			
1,034.1			
1,055.1			
1,059.1			
1,102.0			
1,120.0			
1,170.1			
1,175.1			
1,202.0			
1,251.0			
1,270.0			
1,307.0			
1,365.1			
1,720.0			
1,774.0			
1,940.0			Cement; 1,280.0 ftKB; 2,527.0 ftKB
1,980.1			
1,982.2			
1,994.1			
2,027.0			
2,030.0			
2,162.1			
2,164.0			
2,211.0			
2,212.0			
2,252.1			
2,227.0			
2,252.0			
2,252.0			
2,270.0			
2,302.2			
2,360.0			
2,361.0			
2,370.0			
2,380.1			
2,380.1			
2,407.2			
2,470.2			
2,480.0			
2,500.0			
2,500.0			Production; 5 1/2 in; 0.1-2,527.0 ftKB

Cement Fluid Additives		
Add	Type	Conc