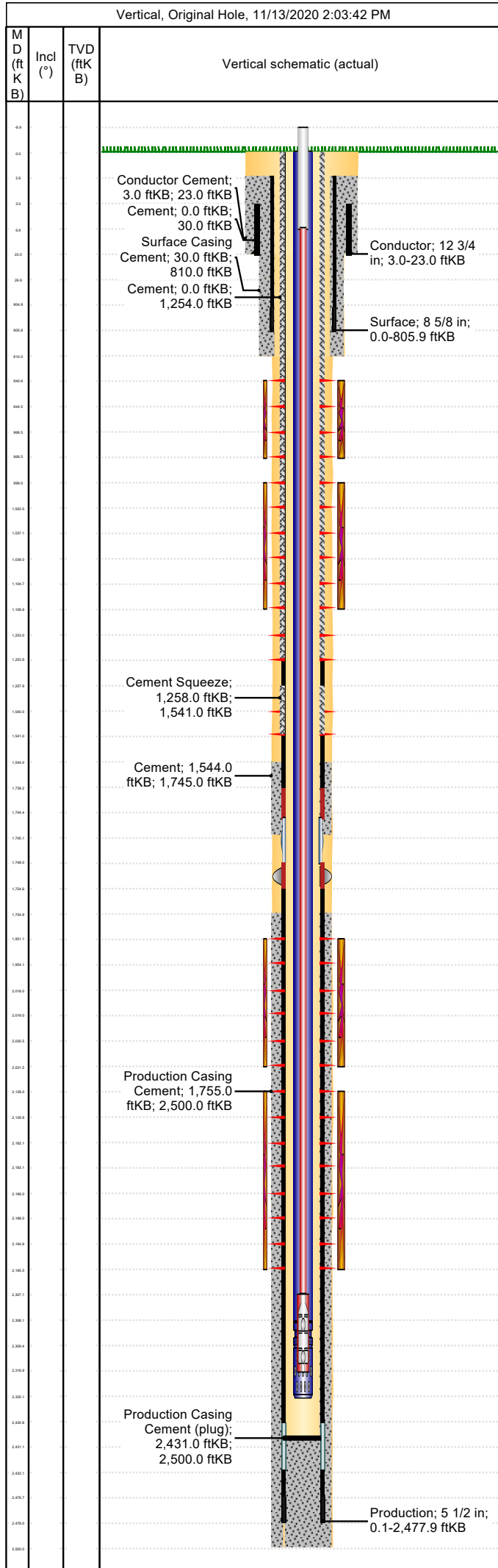


Well Name: Apache Canyon 12-04

Conductor

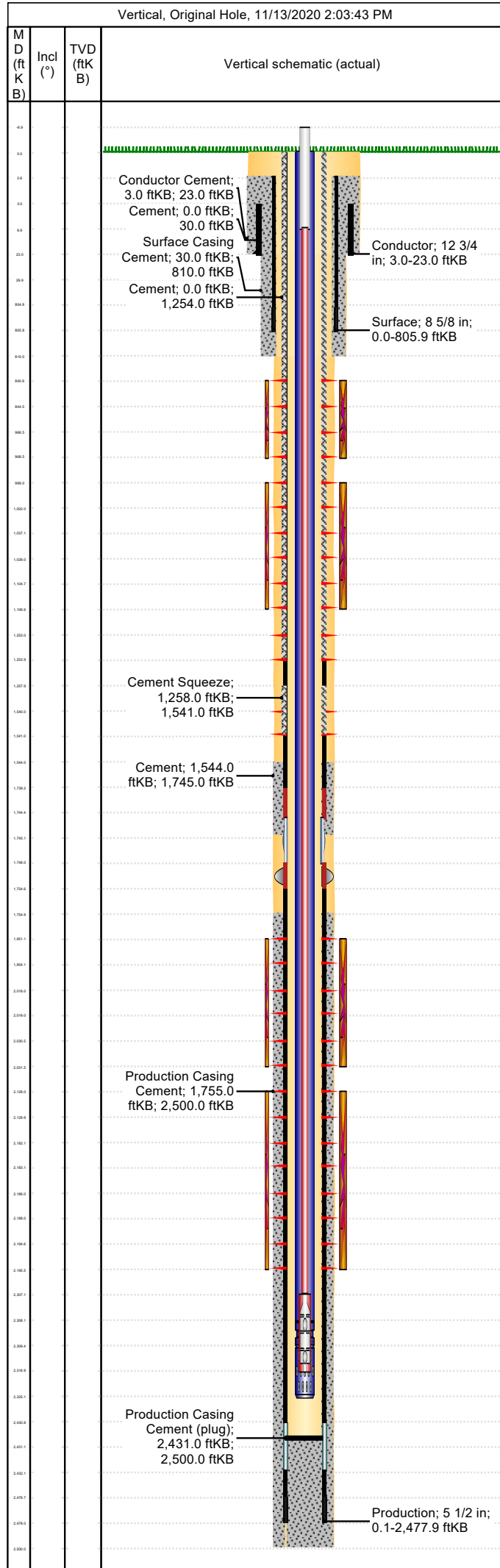
API/UWI 05071087460000	Location T34S-R68W-S12	Field Name Purgatoire River	Permit Number 20060639	State/Province Colorado	Well Configuration Type Vertical
Gr Elev (ft) 8,504.00	Casing Flange Elevation (ft)	KB-Ground Distance (ft) 0.00	KB-Casing Flange Distance (ft)	Spud Date 8/3/2006 19:00	Rig Release Date 8/6/2006 18:30



Wellbore									
Wellbore Name			Profile Type			Vertical Section Direction (°)			
Section Des		Size (in)		Act Top (ftKB)		Act Btm (ftKB)			
Kick Offs & Key Depths									
Type		Top Depth (ftKB)			Depth Top (TVD) (ftKB)				
Wellhead									
Type									
Des		Make		Model		SN		WP Top (psi)	
Last Mud Check									
Date	Type	Depth (ftKB)	Dens (lb/gal)	Vis (s/qt)	Gel 10s (lb/100ft ²)	Gel 10m (lb/100ft ²)	PV (cP)	YP (lb/100ft ²)	
Casing									
Casing Description Conductor			Run Date 8/3/2006 19:45		Set Depth (ftKB) 23.0		Wellbore Original Hole		
Centralizers					Scratchers				
Jts	Item Des	OD (in)	ID (in)	Wt (lb/ft)	Grade	Len (ft)	Top (ftKB)	Btm (ftKB)	
1	Casing Joints	12 3/4	12.00	35.00	L/S	20.00	3.0	23.0	
Casing Description Surface			Run Date 8/4/2006 16:00		Set Depth (ftKB) 805.9		Wellbore Original Hole		
Centralizers					Scratchers				
Jts	Item Des	OD (in)	ID (in)	Wt (lb/ft)	Grade	Len (ft)	Top (ftKB)	Btm (ftKB)	
1	Collar BGL					2.50	0.0	2.5	
0	Casing Joint	8 5/8	8.10	24.00	J-55	0.00	2.5	2.5	
18	Casing Joint	8 5/8	8.10	24.00	J-55	802.40	2.5	804.9	
1	Guide Shoe	8 5/8	8.10	24.00	J-55	1.00	804.9	805.9	
Casing Description Production			Run Date 8/6/2006 17:30		Set Depth (ftKB) 2,477.9		Wellbore Original Hole		
Centralizers					Scratchers				
Jts	Item Des	OD (in)	ID (in)	Wt (lb/ft)	Grade	Len (ft)	Top (ftKB)	Btm (ftKB)	
39	Casing Joints	5 1/2	4.95	15.50	J-55	1,739.02	0.1	1,739.1	
1	Casing Pup Joint	5 1/2	4.95	15.50	J-55	5.50	1,739.1	1,744.6	
1	Stage Collar	5 1/2	4.95	15.50	J-55	3.50	1,744.6	1,748.1	
1	External Casing Packer	5 1/2	4.95	15.50	J-55	6.50	1,748.1	1,754.6	
15	Casing Joints	5 1/2	4.95	15.50	J-55	676.14	1,754.6	2,430.7	
1	Float Collar	5 1/2	4.95	15.50	J-55	1.25	2,430.7	2,432.0	
1	Casing Joints	5 1/2	4.95	15.50	J-55	44.73	2,432.0	2,476.7	
1	Float Shoe	5 1/2	4.95	15.50	J-55	1.25	2,476.7	2,477.9	
Cement: <Description?>									
Cementing Start Date			Cementing End Date			Wellbore			
Evaluation Method			Cement Evaluation Results						
Comment									
Cement Stage: <Description?>									
Top Depth (ftKB)		Bottom Depth (ftKB)		Full Return?		Vol Cement		Top Plug?	
Initial Pump Rate (bbl/min)		Final Pump Rate (bbl/min)		Avg Pump Rate (bbl/min)		Final Pump Pressure (psi)		Plug Bump Pressure (psi)	
Pipe Reciprocated?		Stroke (ft)		Reciprocation Rate (spm)		Pipe Rotated?		Pipe RPM (rpm)	
Tagged Depth (ftKB)		Tag Method		Depth Plug Drilled Out To		Drill Out Diameter (in)		Drill Out Date	

Well Name: Apache Canyon 12-04

API/UWI 05071087460000	Location T34S-R68W-S12	Field Name Purgatoire River	Permit Number 20060639	State/Province Colorado	Well Configuration Type Vertical
Gr Elev (ft) 8,504.00	Casing Flange Elevation (ft)	KB-Ground Distance (ft) 0.00	KB-Casing Flange Distance (ft)	Spud Date 8/3/2006 19:00	Rig Release Date 8/6/2006 18:30



Cement Fluid: <Description?>

Fluid Type	Fluid Description	Amount (sack)	Class	Volume Pumped (bbl)
Estimated Top (ftKB)	Est Btm (ftKB)	Yield (ft³/sack)	Mix H2O Ratio (gal/sack)	Free Water (%)
Density (lb/gal)	Plastic Viscosity (cP)	Thickening Time (hr)	1st Compressive Strength (psi)	

Cement Fluid Additives

Add	Type	Conc