



**Radial Cement Bond
Gamma Ray
Casing Collar Log**

Company Kerr-McGee Oil & Gas Onshore, L.P.
Well Badding USX W 25-07D
Field Wattenberg
County Weld **State** Colorado

Company Kerr-McGee Oil & Gas Onshore, L.P.
Well Badding USX W 25-07D
Field Wattenberg
County Weld
State Colorado

Location: SEC 25 TWP 2N RGE 66W
 API #: 05-123-33608
 Permanent Datum Ground Level Elevation 5025'
 Log Measured From Kelly Bushing Elevation 15 FT
 Drilling Measured From Kelly Bushing
 Other Services
 JB/GR
 Squeeze
 Elevation
 K.B. 5040'
 D.F. ---
 G.L. 5025'

Date	18-MAR-2021						
Run Number	TWO						
Depth Driller	8262 FT						
Depth Logger	2988 FT						
Bottom Logged Interval	2974 FT						
Top Log Interval	Surface						
Open Hole Size	7.875"						
Type Fluid	Water						
Density / Viscosity	8.34 lb/gal						
Max. Recorded Temp.	120°F						
E. estimated Cement Top	See Log						
Time Well Ready	ROA						
Time Logger on Bottom	9-15						
E. equipment Number	HD-0325						
Location	Platteville, CO						
Recorded By	J. Morrison						
Witnessed By	Taux Deal						
Run Number	Borehole Record		Tubing Record				
	Bit	From	To	Size	Weight	From	To
Casing Record	Size (in)	Wgt (lbs/ft)	Grade	Top	Bottom		
Surface Casing	8 5/8	24	J-55	Surface	1025 FT		
Intermediate #1	4 1/2	11.6	M-80	Surface	8252 FT		
Intermediate #2							
Inner							

<<< Fold Here >>>

All interpretations are opinions based on inferences from electrical or other measurements and we cannot and do not guarantee the accuracy or correctness of any interpretation, and we shall not, except in the case of gross or willful negligence on our part, be liable or responsible for any loss, costs, damages, or expenses incurred or sustained by anyone resulting from any interpretation made by any of our officers, agents or employees. These interpretations are also subject to our general terms and conditions set out in our current Price Schedule.

Comments

Log ran as per customer request
Depth referenced to Superior Bond Log dated 20-JUL-2011
Adjusted -22 FT to correlate with Bond Log
Log ran with 500 PSI Surface Induced Pressure
Logging tools were clean and free of debris upon completion of operations

Thank you for choosing Reliance Oilfield Services, LLC!!

Main Pass

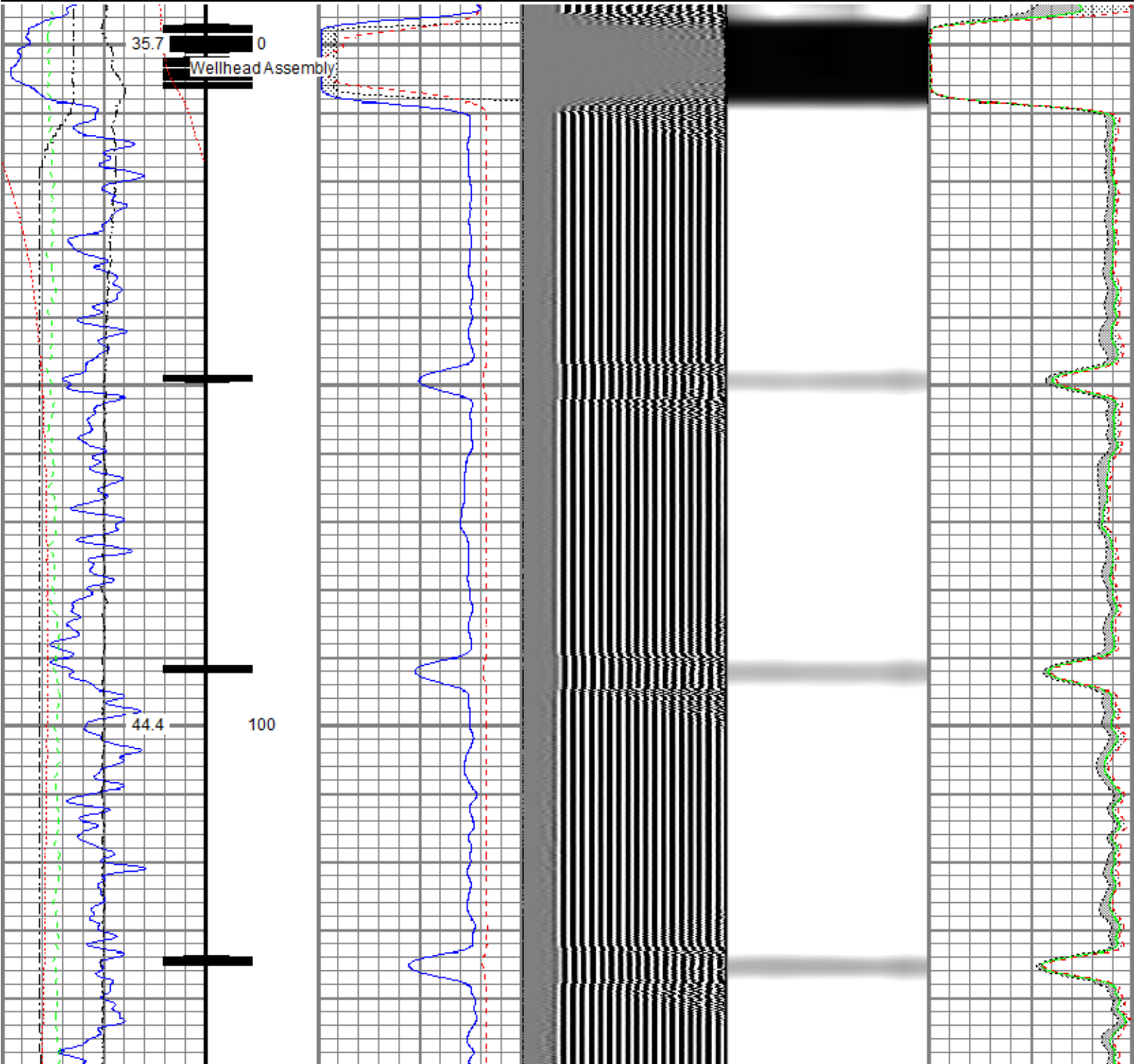


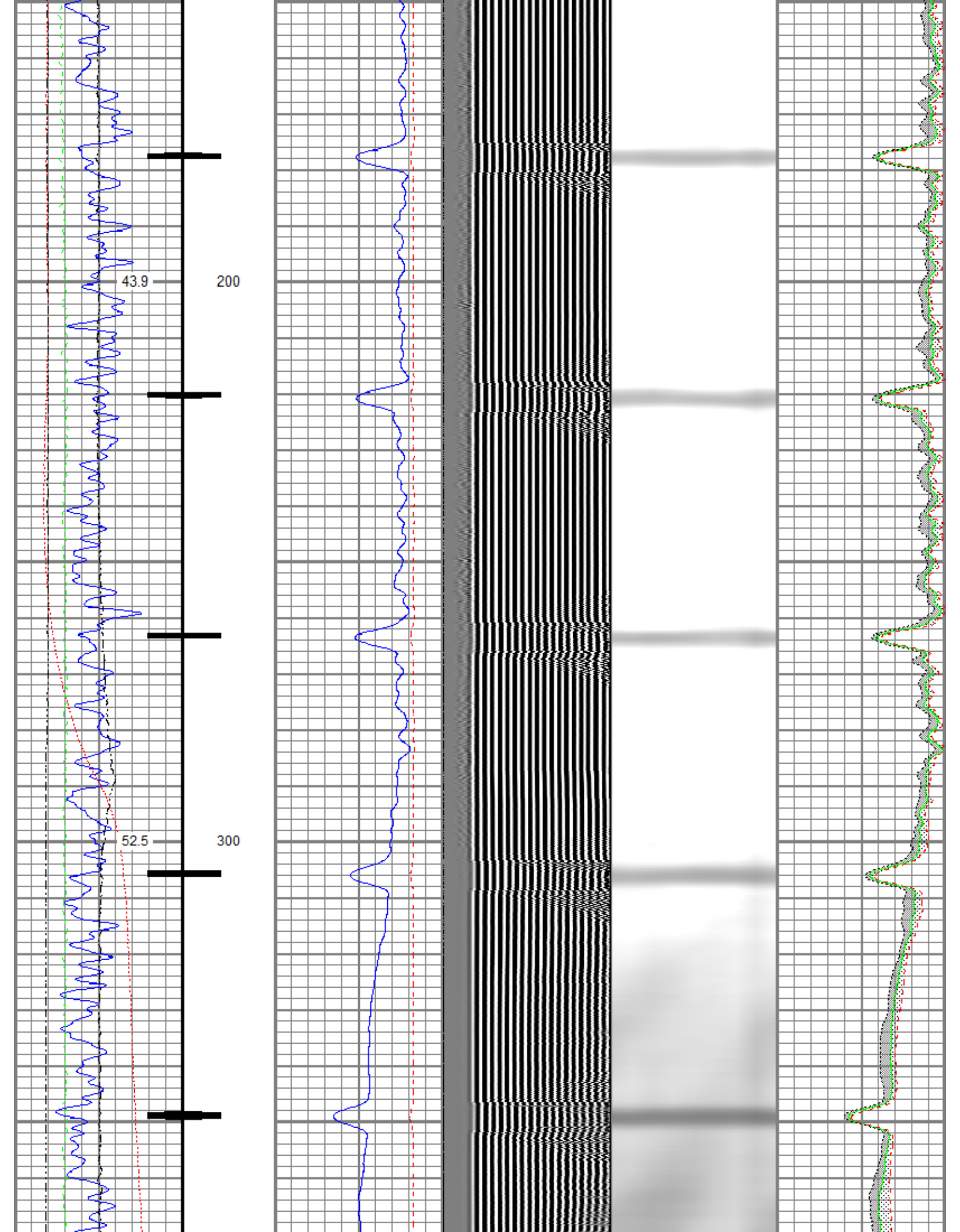
Recorded With 500 PSI Surface Induced Pressure

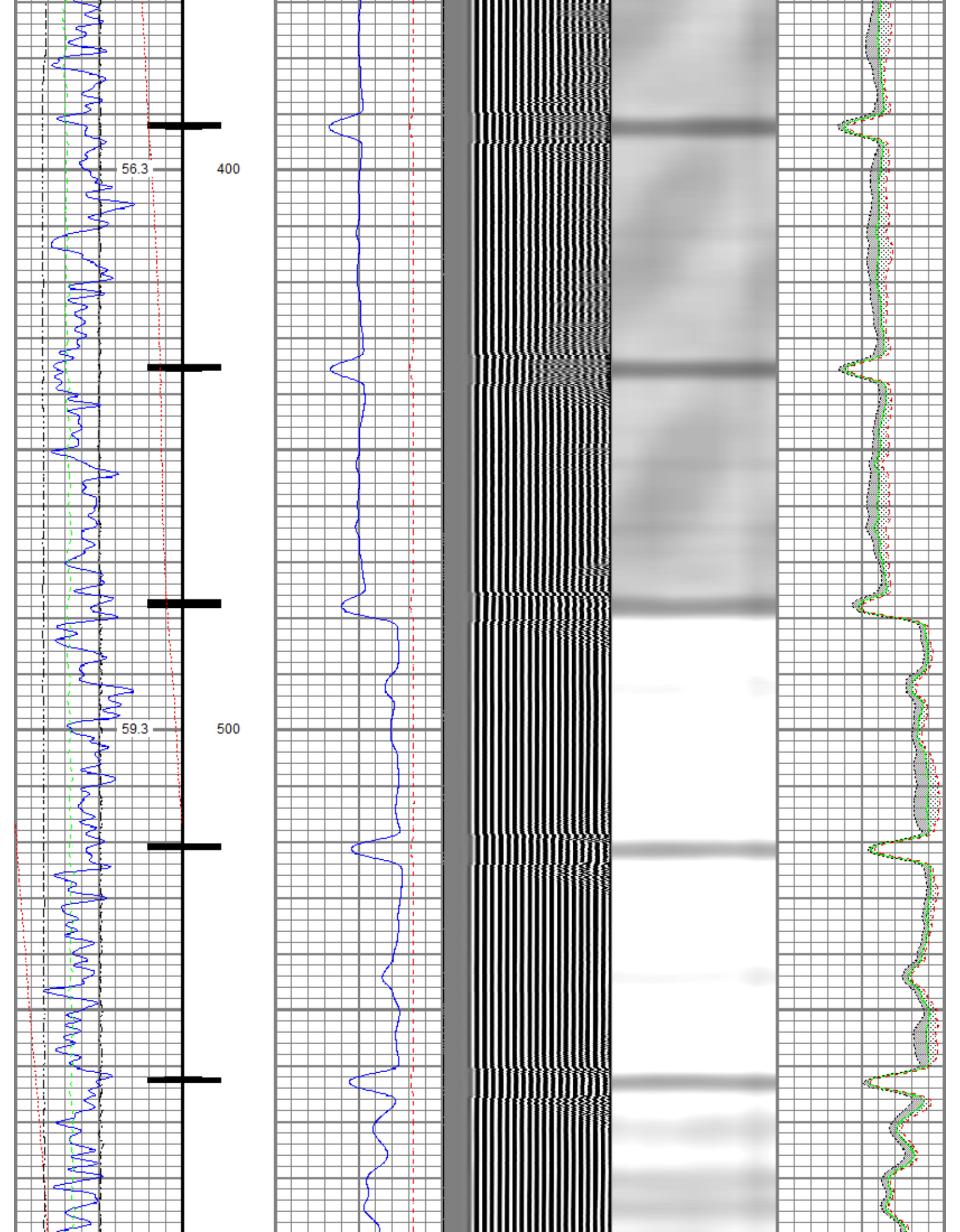
Recorded With 500 PSI Surface Induced Pressure

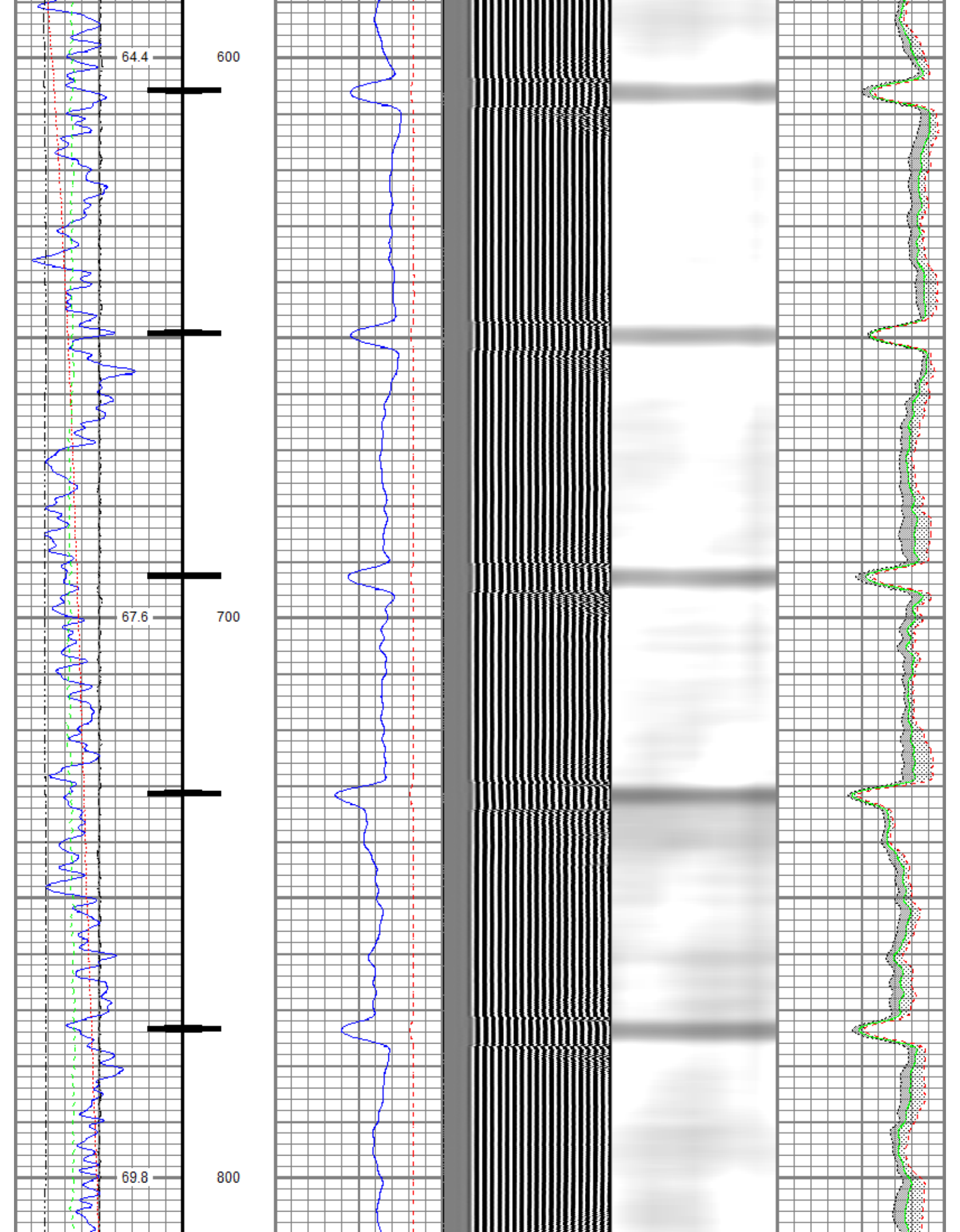
Database File	oxy\0512333608_oxy_badding usx w 25-07d_rbl_03-18-21\0512333608_oxy_badding usx w 25-07d_rbl_03-18-21.db
Dataset Pathname	run2/Main.1
Presentation Format	ros_radri
Dataset Creation	Thu Mar 18 10:07:47 2021
Charted by	Depth in Feet scaled 1:240

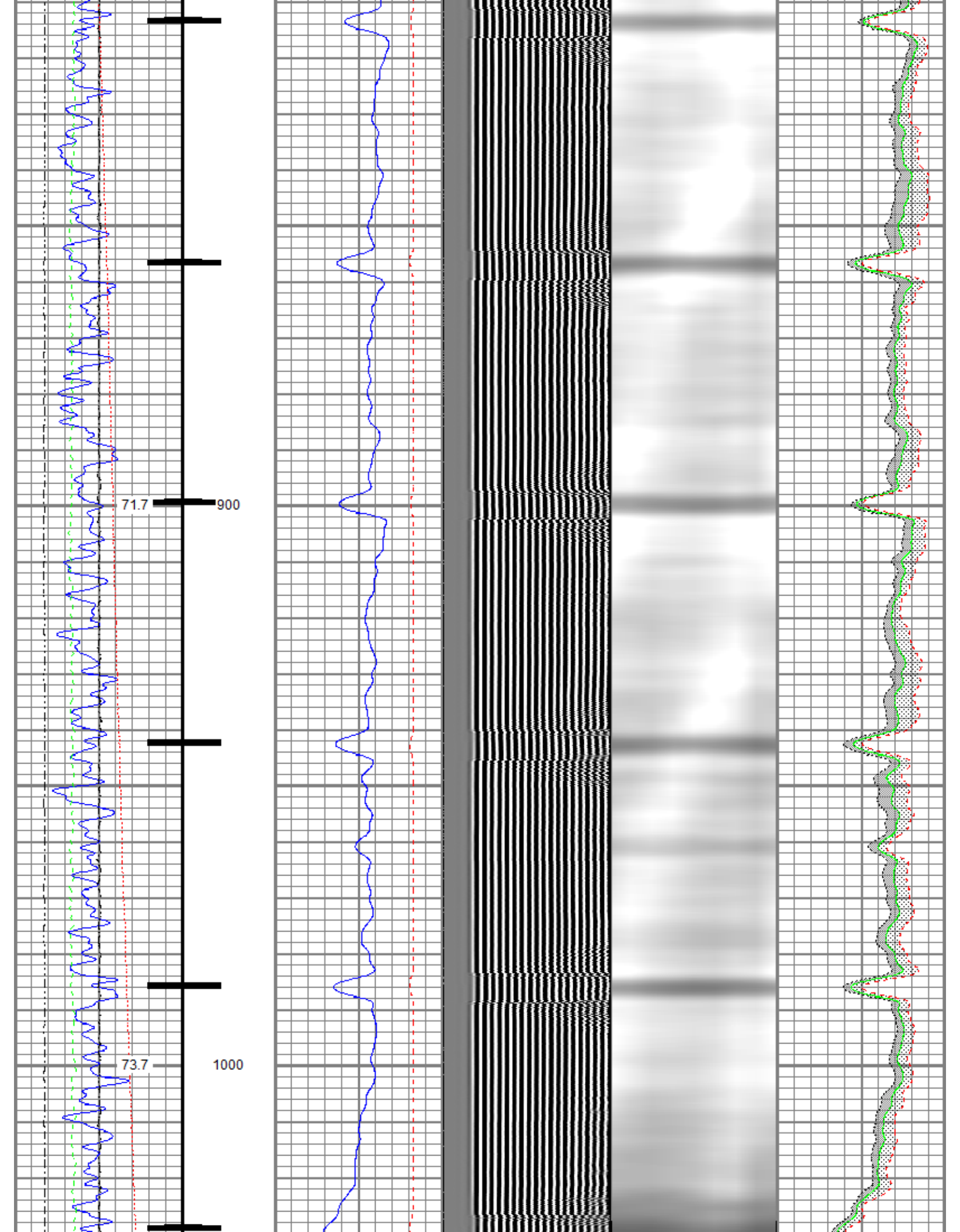
Gamma Ray (GAPI) 120	0 3' Amplitude (mV) 100	5' Variable Density Log (usec) 1200	Sector Map	0 Average Amplitude 100
Casing Collar Locator	0 3' Amplitude x 5 (mV) 20			Minimum Amplitude
0 Temperature (degF) 20	0 3' Travel Time (usec) 150			0 100
Line Speed (ft/min) 150				Maximum Amplitude
0 Line Tension (lb) 2000				0 100
Differential Temperature (degF) 2				

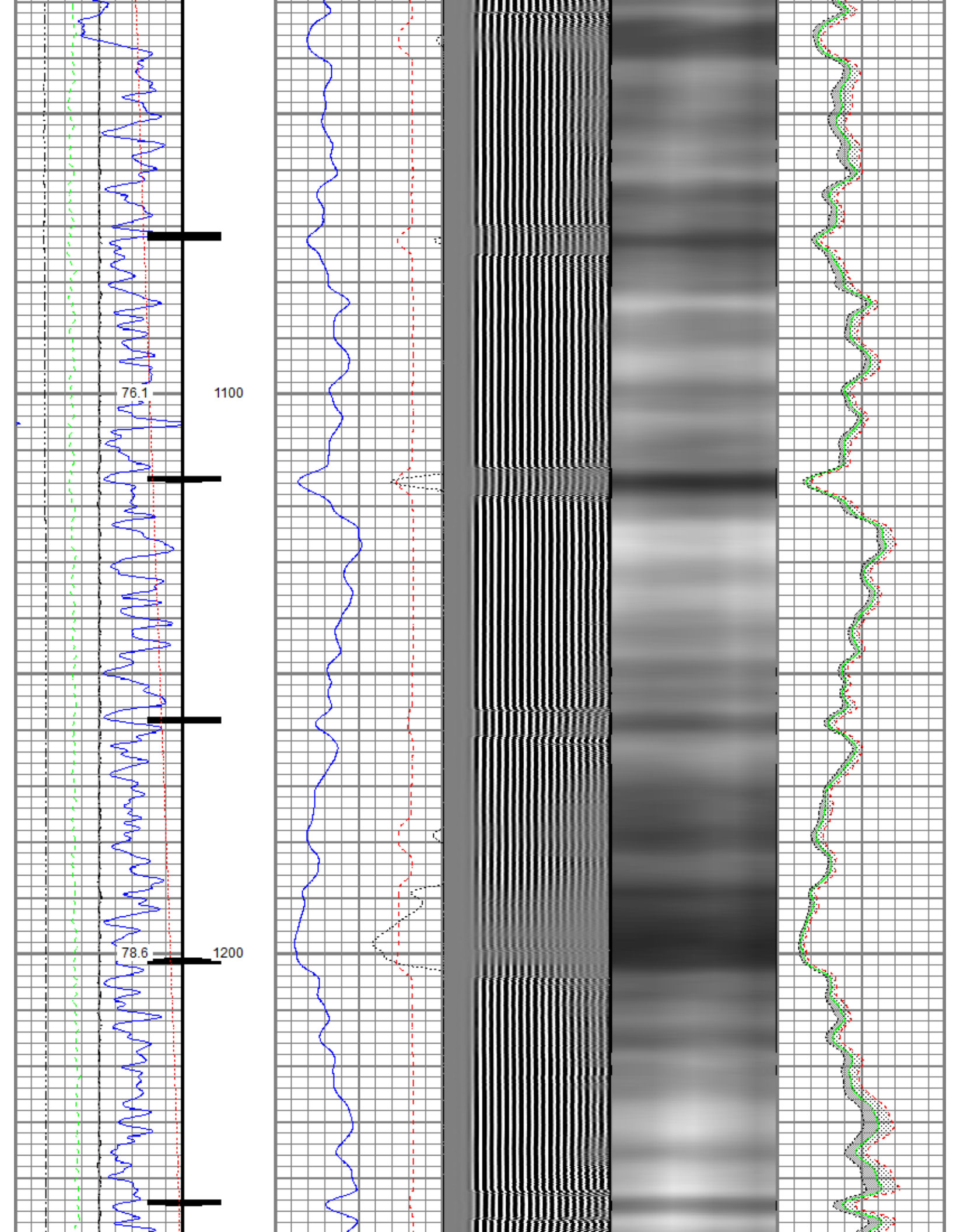


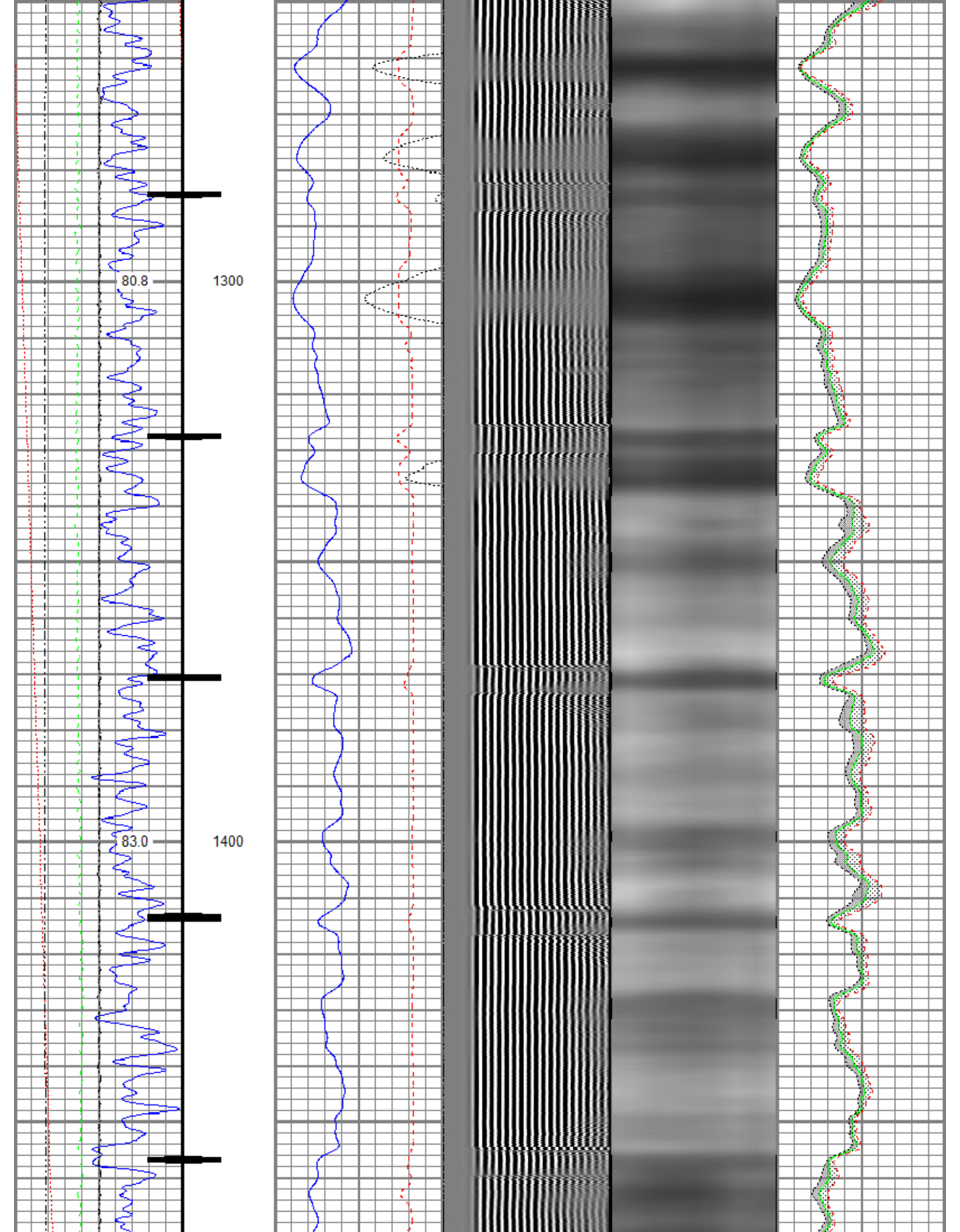


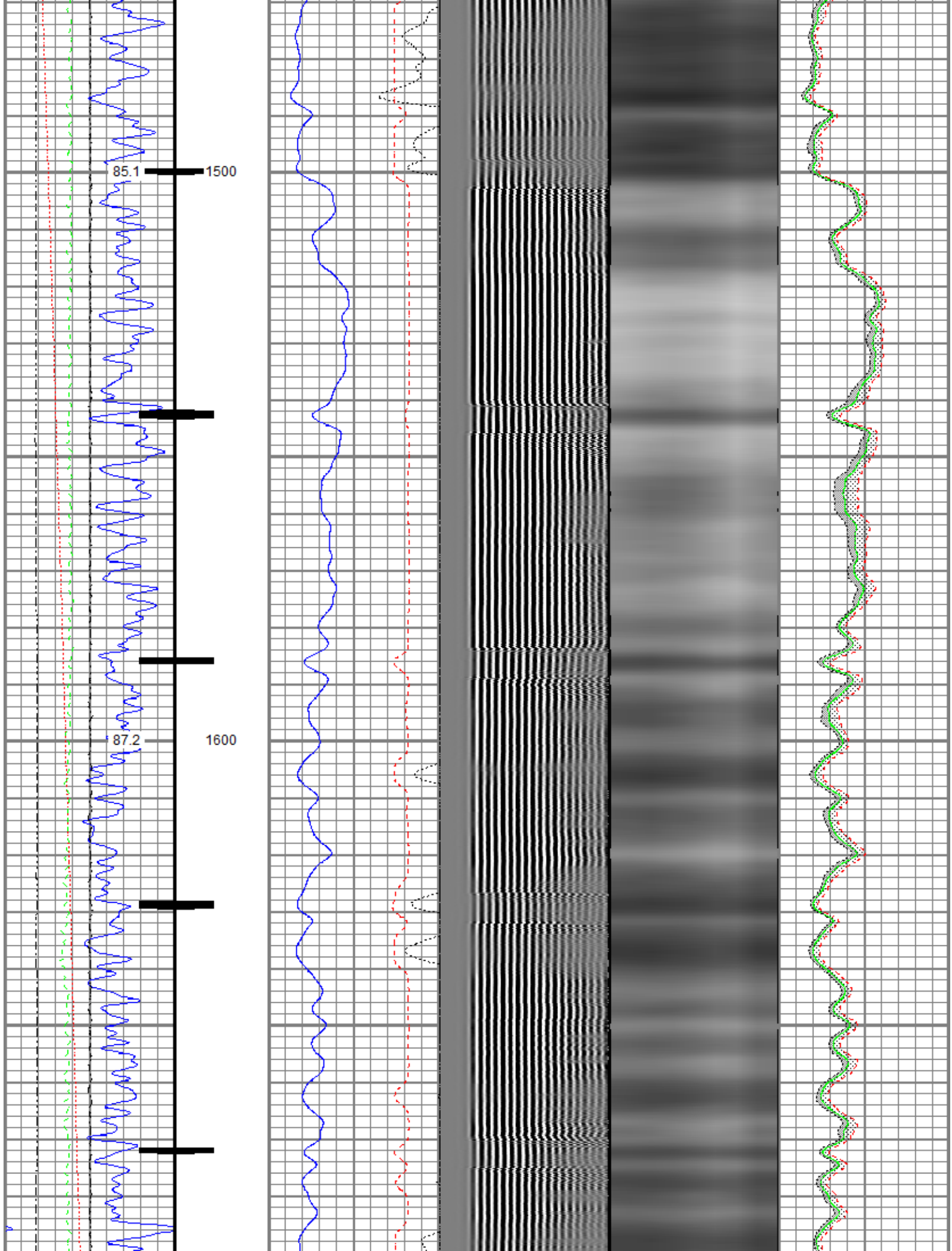


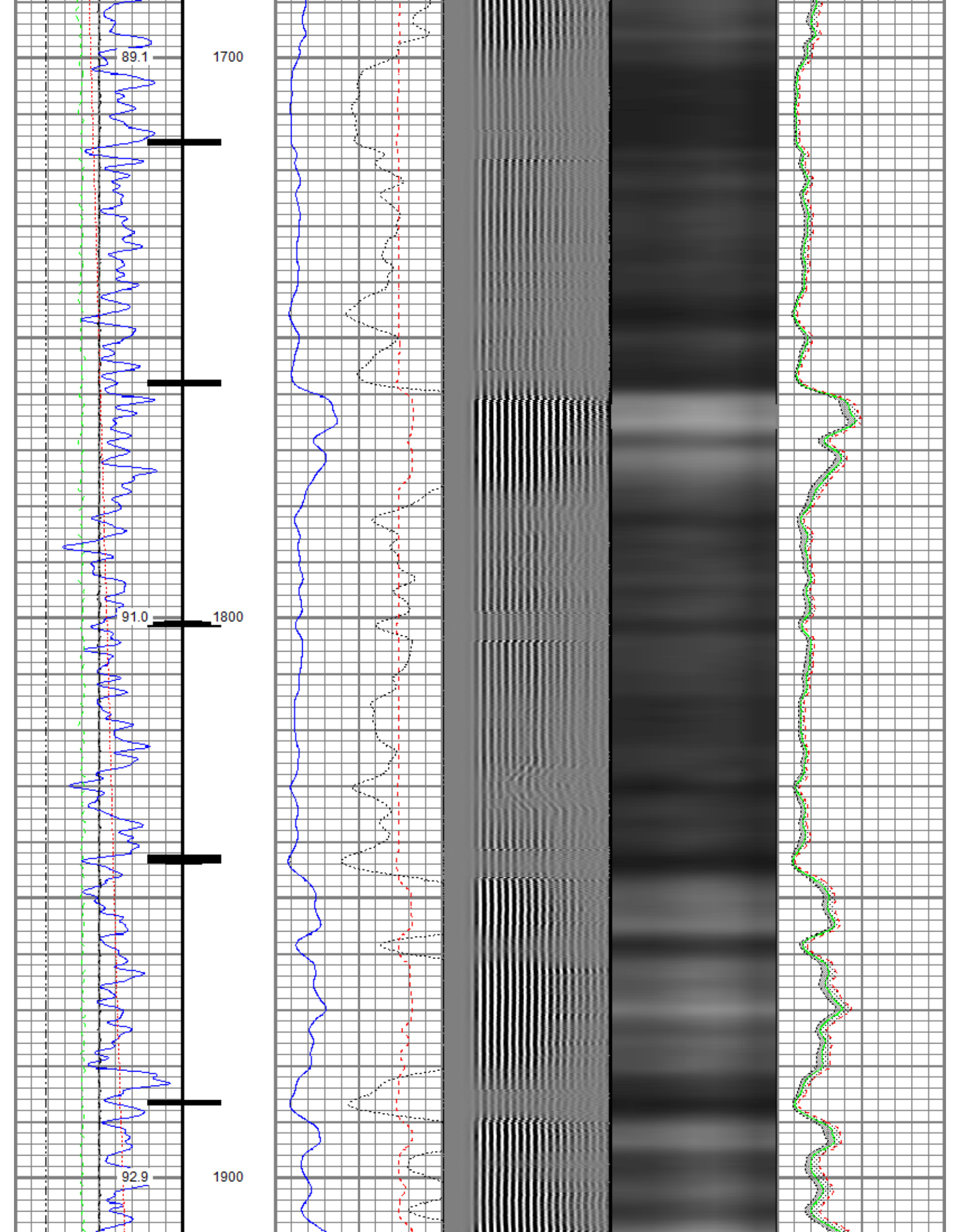


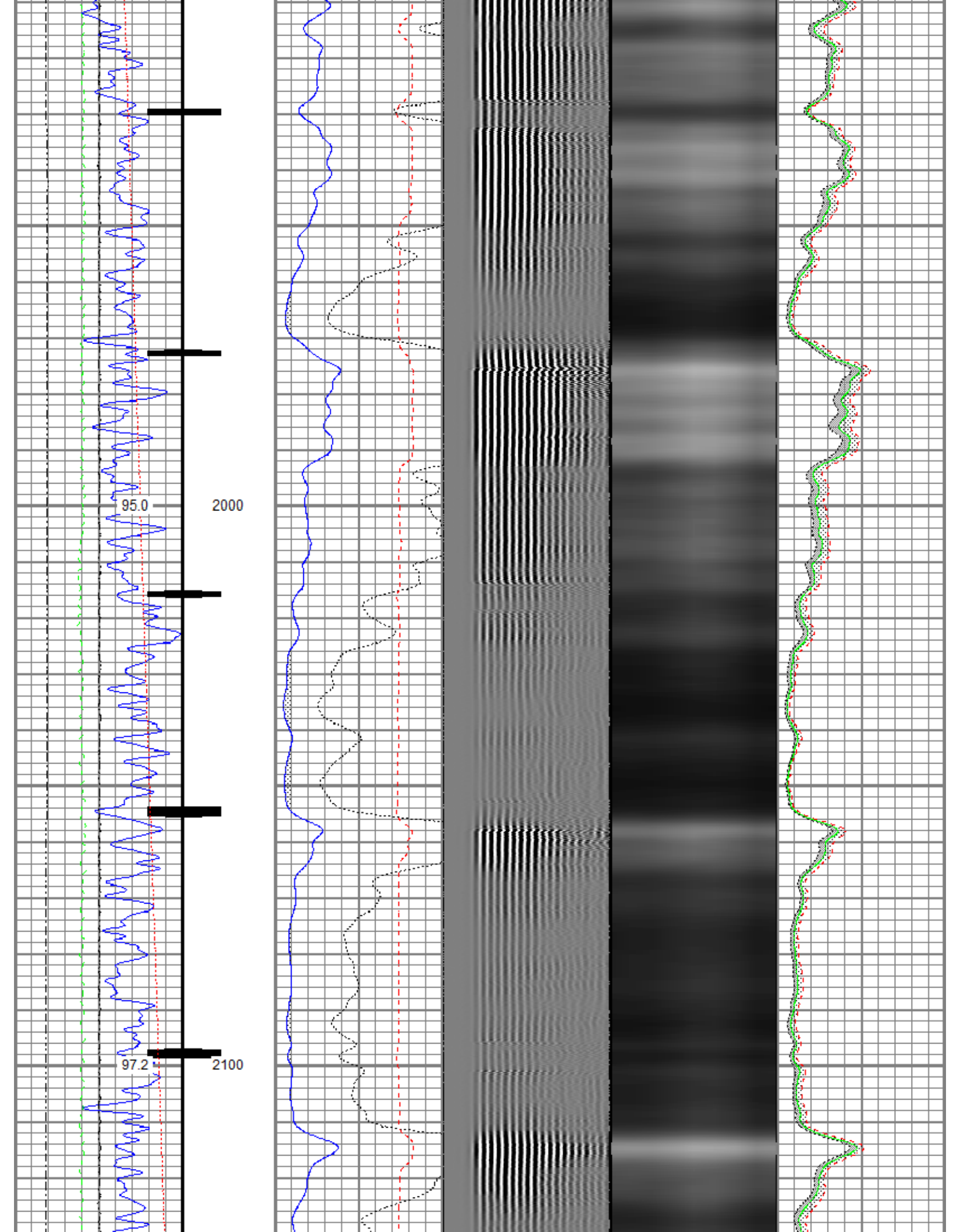


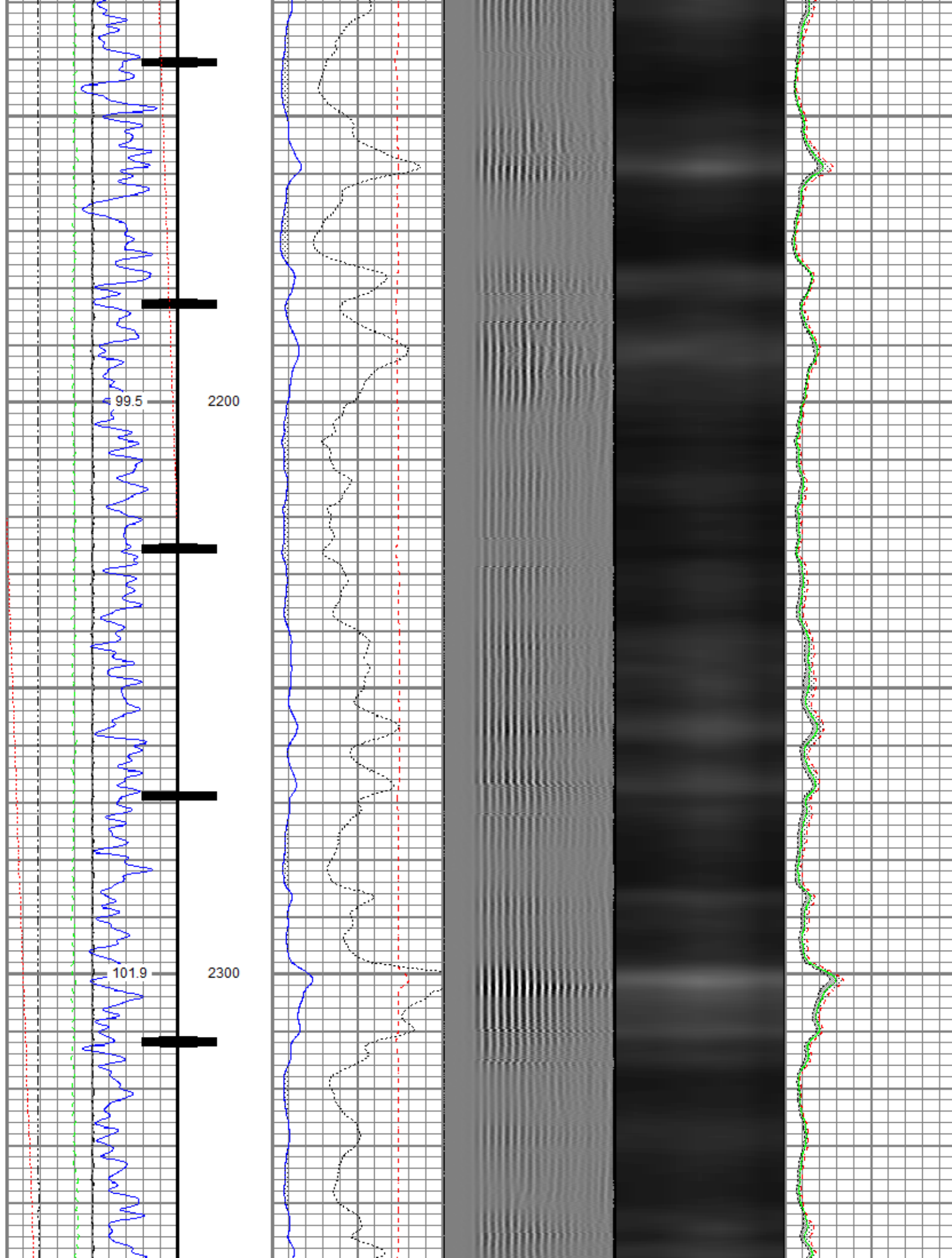


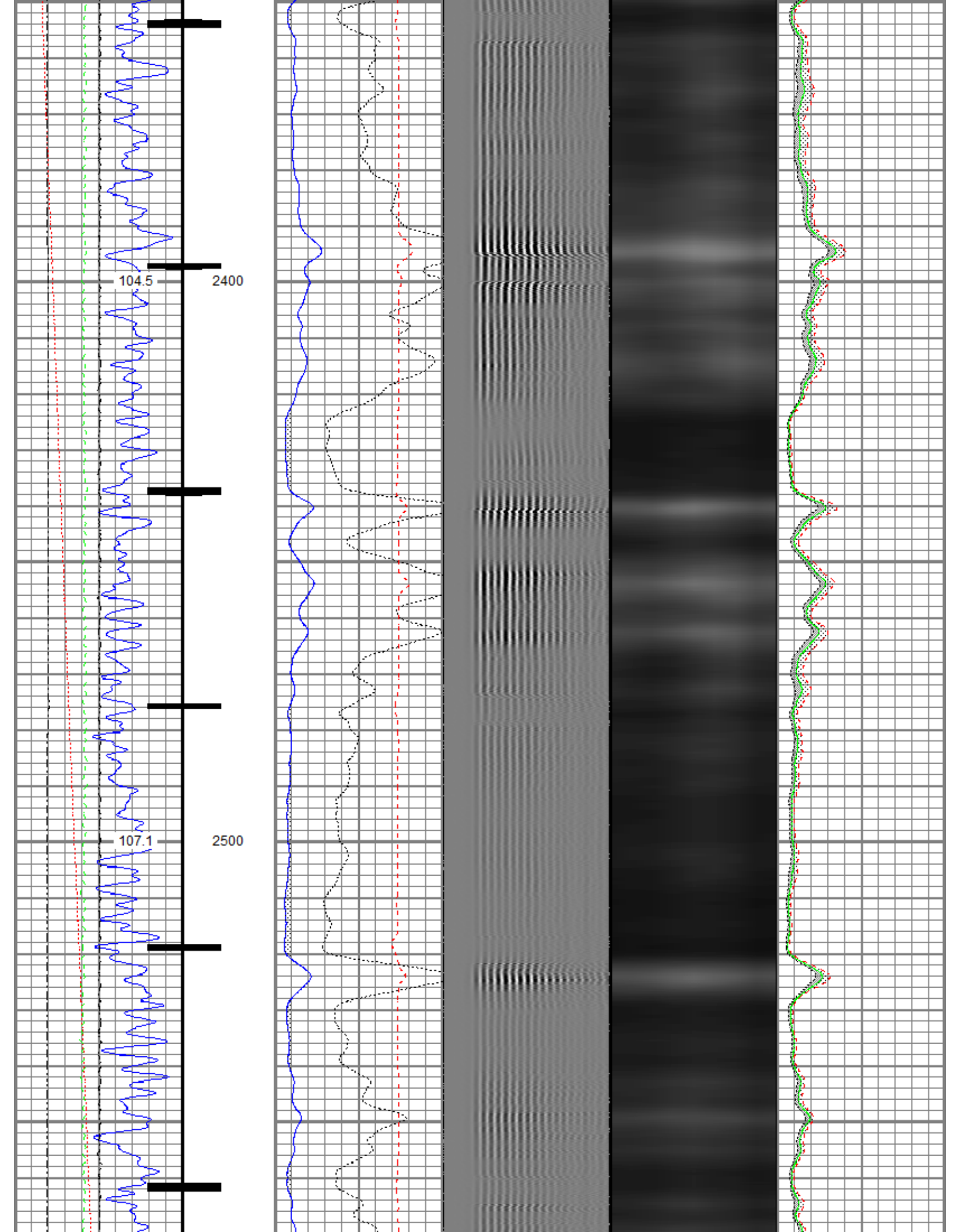


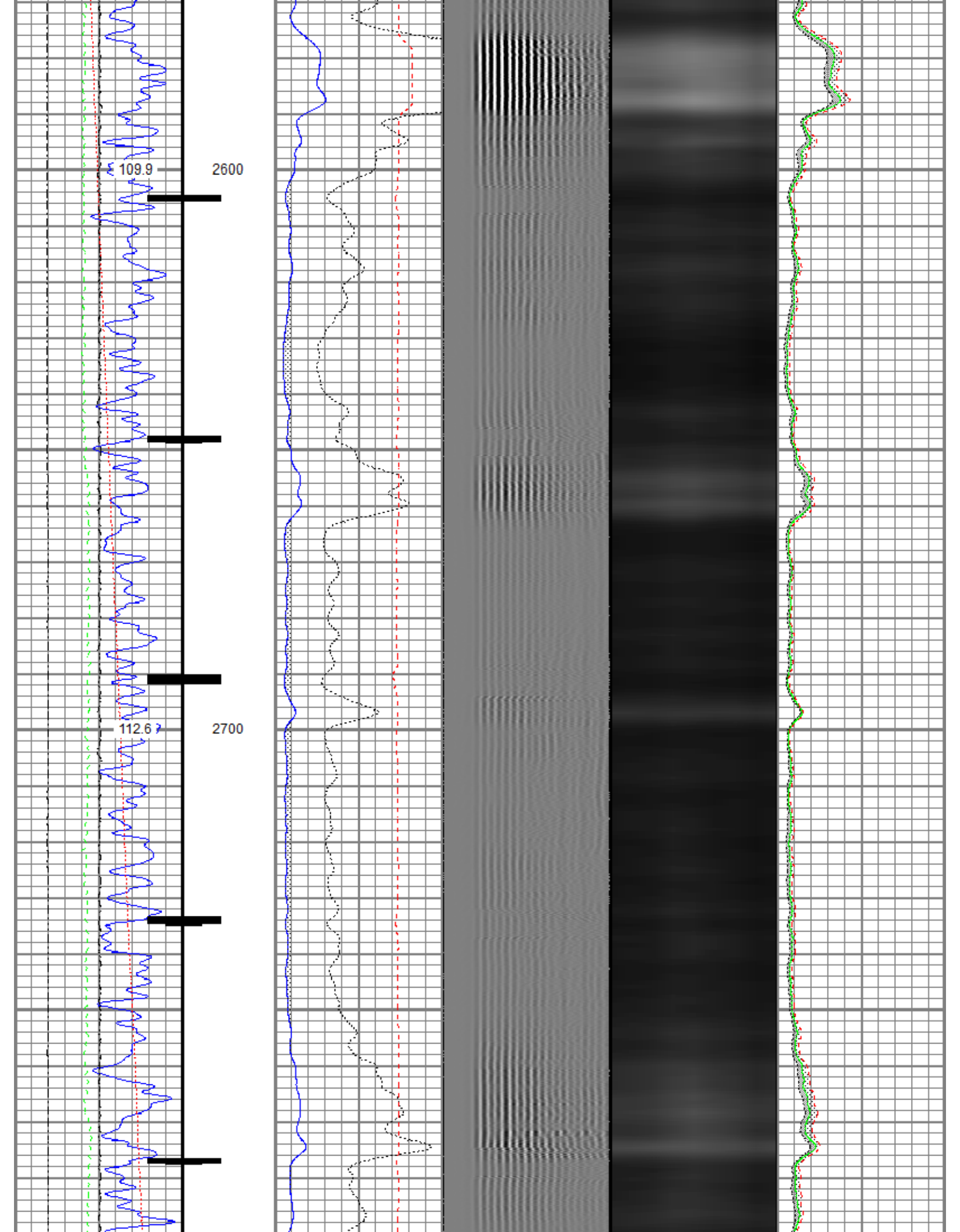


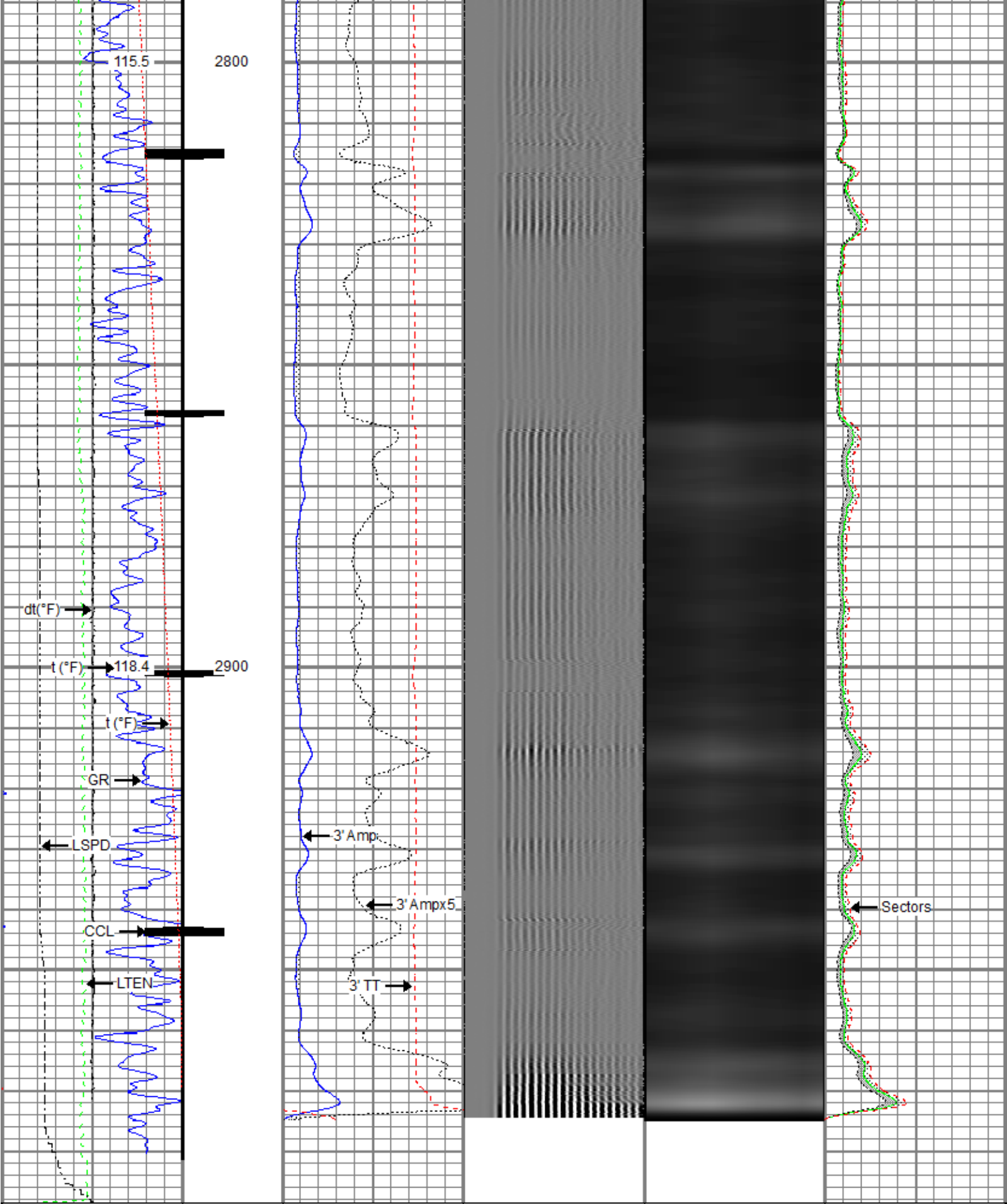












Gamma Ray (GAPI)	0 120	0 3' Amplitude (mV) 100	5' Variable Density Log (usec)	200 1200	Sector Map	0 Average Amplitude 100
Casing Collar Locator		0 3' Amplitude x 5 (mV) 20				0 Minimum Amplitude 100
0 Temperature (degF) 20		0 3' Travel Time (usec) 150				0 Maximum Amplitude 100
Line Speed						0

-150	(ft/min)	150
0	Line Tension (lb)	2000
Differential Temperature		
-2	(degF)	2

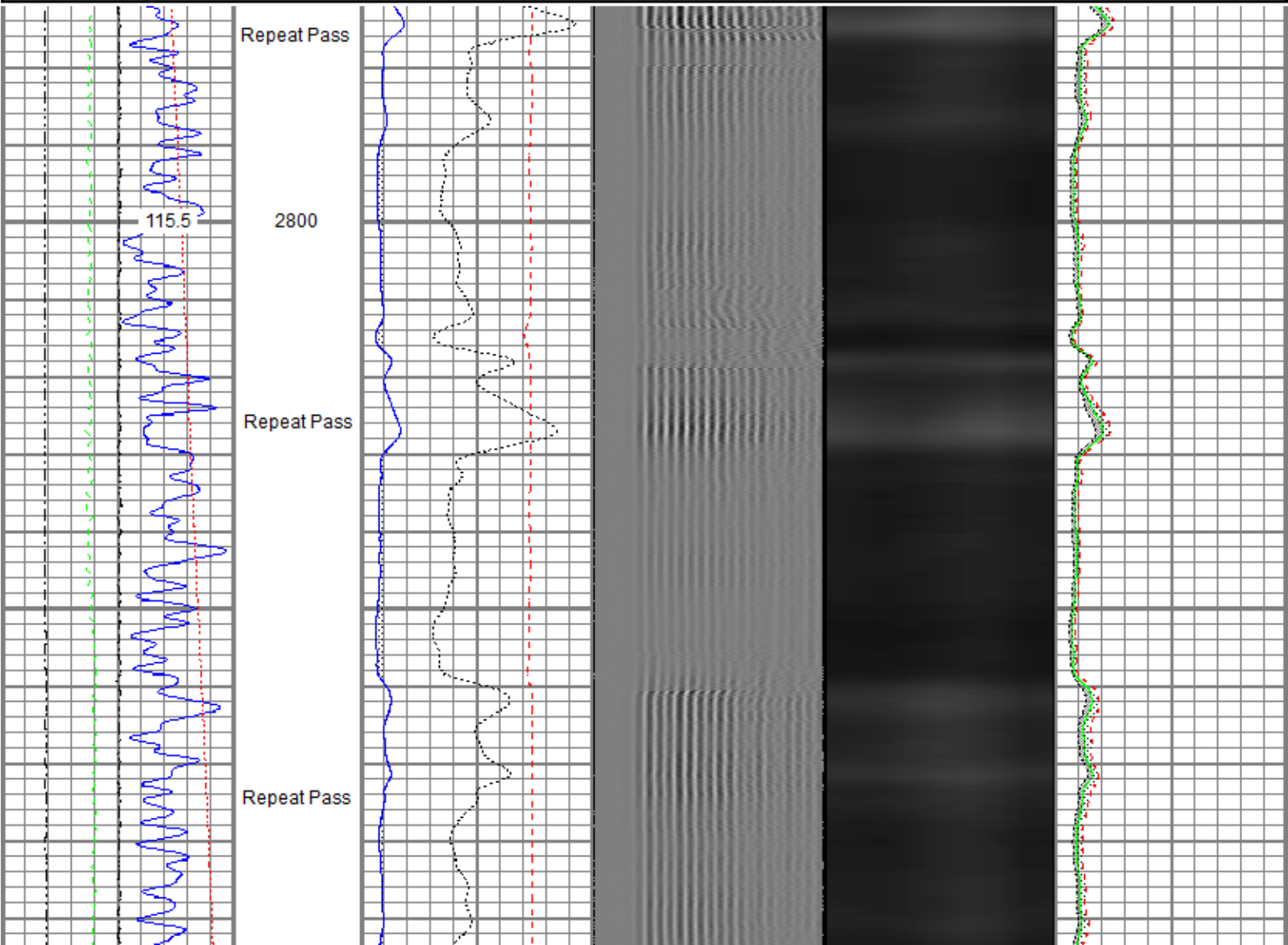


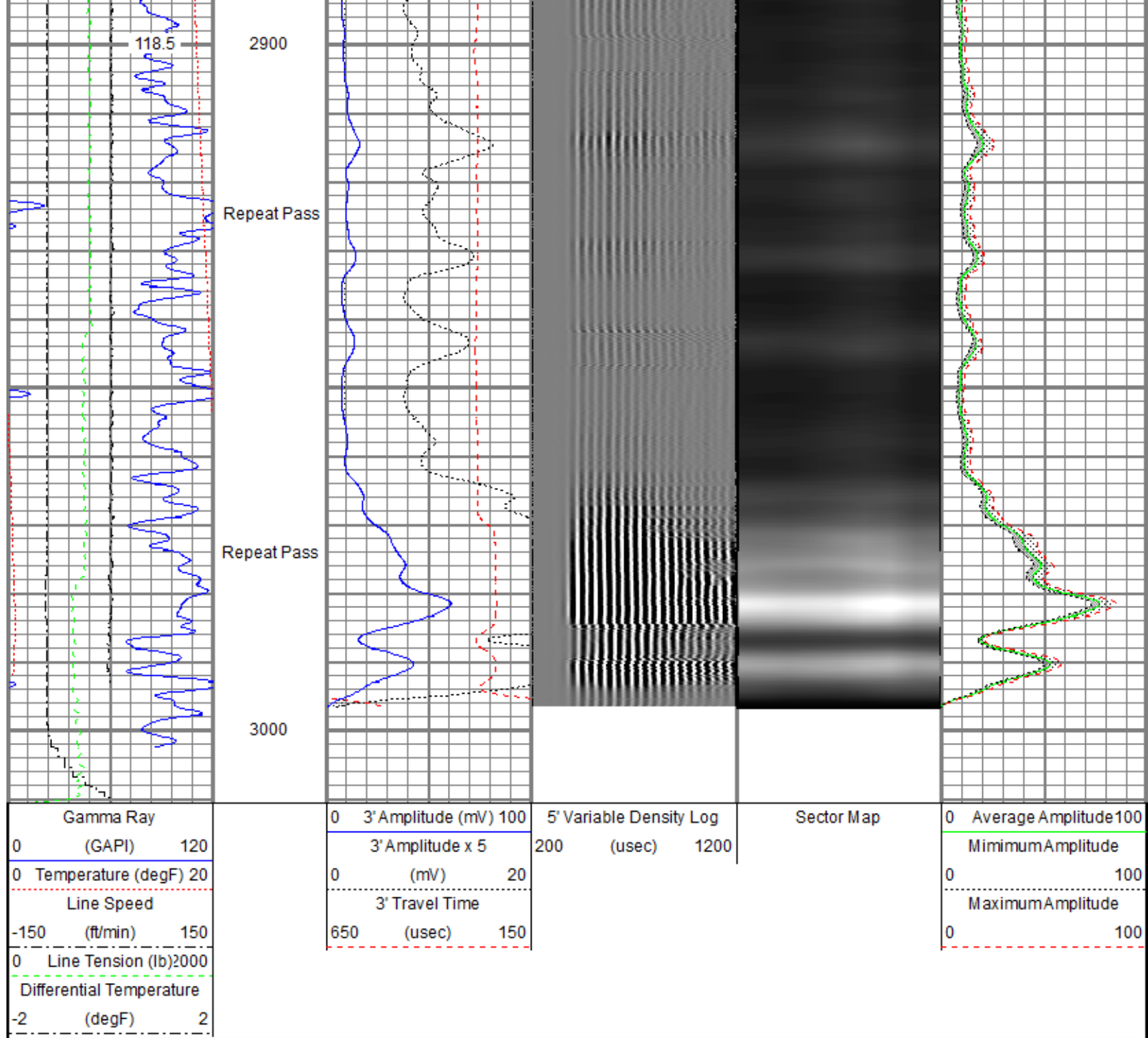
Repeat Pass

Recorded With 500 PSI Surface Induced Pressure

Database File: oxy\0512333608_oxy_badding usx w 25-07d_rbl_03-18-21\0512333608_oxy_badding usx w 25-07d_rbl_03-18-21.db
 Dataset Pathname: run2/Repeat.2
 Presentation Format: ros_radrii
 Dataset Creation: Thu Mar 18 15:01:32 2021
 Charted by: Depth in Feet scaled 1:240

Gamma Ray (GAPI) 120	0 3' Amplitude (mV) 100	5' Variable Density Log (usec) 1200	Sector Map	0 Average Amplitude 100
0 Temperature (degF) 20	3' Amplitude x 5 (mV) 20			Minimum Amplitude
Line Speed (ft/min) 150	0 3' Travel Time (usec) 150			0 100
0 Line Tension (lb) 2000				Maximum Amplitude
Differential Temperature (degF) 2				0 100





Sensor	Offset (ft)	Schematic	Description	Length (ft)	O.D. (in)	Weight (lb)
TEMP	17.29		Titan CHD-14375 GO	1.03	1.44	3.60
			Titan 1-7/16" Assembled Electric Cable Head with 1" Fishing Neck			
			Probe CENT-2750 Probe 2-3/4" Electric Inline Bowspring Centralizer	2.88	2.75	20.00

WVFS8	15.06		Probe Radii-2750 RBT (120855)	9.39	2.75	105.00	
WVFS7	15.06		Probe 2-3/4" Radial Cement Bond Tool with Integral Temperature Sub				
WVFS6	15.06						
WVFS5	15.06						
WVFS4	15.06						
WVFS3	15.06						
WVFS2	15.06						
WVFS1	15.06						
WVFCAL	15.06						
WVF3FT	15.06						
WVF5FT	14.06						
CCL\$2	7.05			Probe CENT-2750	2.88	2.75	20.00
CCL\$1	7.05			Probe 2-3/4" Electric Inline Bowspring Centralizer			
GR	5.71		Probe GR-CCL-2750 6PB (101001)	4.80	2.75	55.00	
			Probe 2-3/4" rev.1 Digital Scintillation Gamma Ray/CCL Combined with 6 Pin Bottom for CNT				
LOCTIM	0.00		Probe CENT-2750	2.88	2.75	20.00	
UTCTIM	0.00		Probe 2-3/4" Electric Inline Bowspring Centralizer				
			GO BN-14375	0.25	1.44	1.00	
			GO 1-7/16" Bull Nose with Go Box Top				

Dataset: 0512333608_oxy_badding usx w 25-07d_rbl_03-18-21.db: field/well/run2/Main.1
 Total length: 24.11 ft
 Total weight: 224.60 lb
 O.D.: 2.75 in

Calibration Report

Database File c:\programdata\warrior\data\oxy\0512333608_oxy_badding usx w 25-07d_rbl_03-18-21\0512333608_oxy_badding usx w 25-07d_rbl_03-18-21
 Dataset Pathname run2/Main.1
 Dataset Creation Thu Mar 18 10:07:47 2021

Gamma Ray Calibration Report

Serial Number: 101001
 Tool Model: 2750 6PB
 Performed: Mon Oct 19 14:19:51 2020
 Calibrator Value: 637.0 GAPI
 Background Reading: 100.6 cps
 Calibrator Reading: 981.1 cps
 Sensitivity: 0.7235 GAPI/cps

Serial Number: 120855
 Tool Model: 2750 RBT
 Calibration Casing Diameter: 4.500 in
 Calibration Depth: 22.513 ft

Master Calibration, performed (Derived):

	Raw (v)		Calibrated (mv)		Results	
	Zero	Cal	Zero	Cal	Gain	Offset
3'	0.001	0.469	0.800	81.196	171.731	0.645
CAL	0.591	0.590				
5'	0.000	0.611	0.800	81.196	131.661	0.735
SUM						
S1	0.001	0.452	0.000	100.000	221.508	-0.167
S2	0.000	0.466	0.000	100.000	214.697	-0.103
S3	0.001	0.488	0.000	100.000	205.039	-0.153
S4	0.001	0.493	0.000	100.000	203.429	-0.195
S5	0.001	0.489	0.000	100.000	204.758	-0.106
S6	0.000	0.471	0.000	100.000	212.496	-0.072
S7	0.000	0.449	0.000	100.000	222.889	-0.011
S8	0.000	0.469	0.000	100.000	213.392	-0.010

Air Zero Calibration, performed Thu Mar 18 08:58:58 2021:

	Raw (v)		Calibrated (v)		Results	
	Zero		Zero		Offset	
3'	0.006		0.000		0.000	
5'	0.009		0.000		0.000	
SUM						
S1	0.002		0.000		0.000	
S2	0.007		0.000		-0.000	
S3	0.007		0.000		0.000	
S4	0.006		0.000		0.000	
S5	0.006		0.000		-0.000	
S6	0.007		0.000		-0.000	
S7	0.006		0.000		-0.000	
S8	0.006		0.000		-0.000	

Temperature Calibration Report

Serial Number: 120855
 Tool Model: 2750 RBT
 Performed: Wed Dec 18 13:34:18 2019

	Reference	Reading
Low Reference:	100.00 degF	112.30 degF
High Reference:	350.00 degF	394.75 degF
Gain:	0.89	
Offset:	0.60	
Delta Spacing	1	



Company Kerr-McGee Oil & Gas Onshore, L.P.
Well Badding USX W 25-07D
Field Wattenberg
County Weld
State Colorado