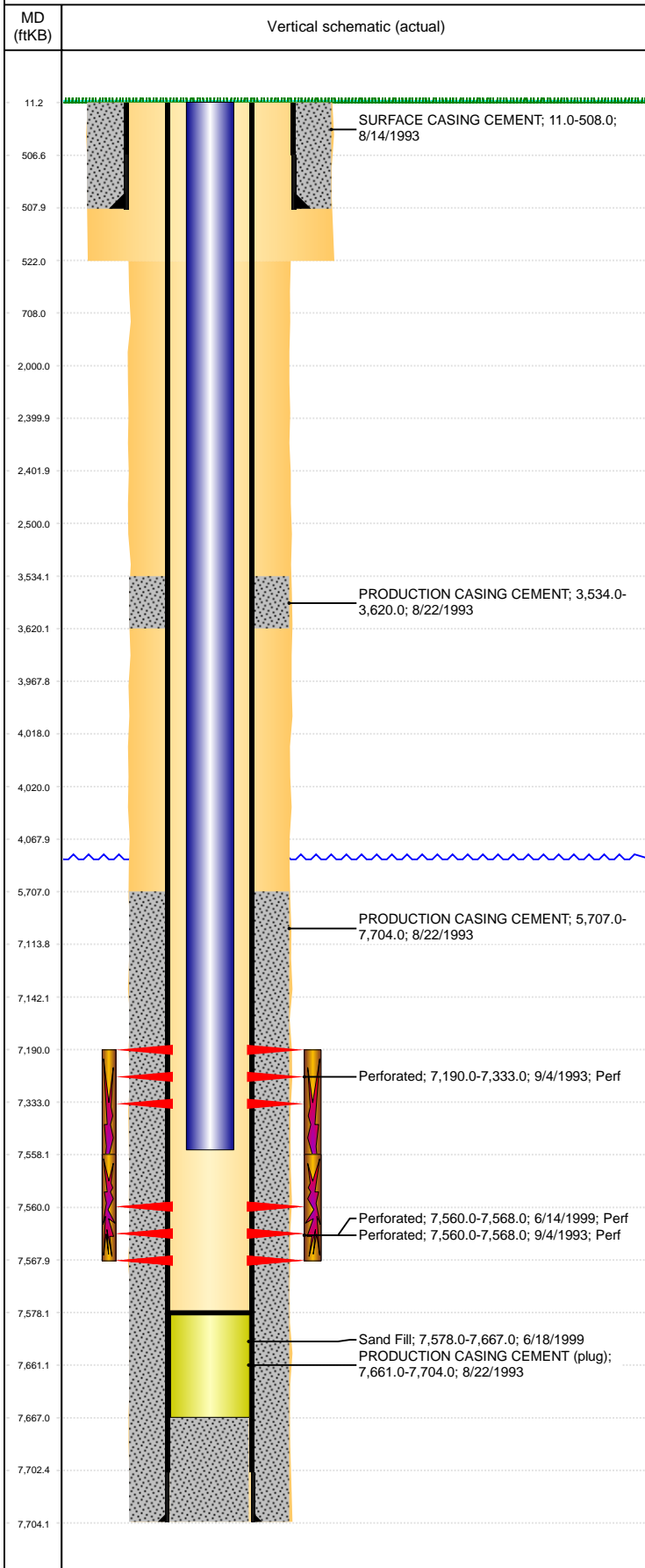


Well Name: LOWER LATHAM 03-15G

DEVIATED, ORIGINAL HOLE, 6/28/2021 5:31:52 PM



Well Header									
API 05-123-17168		Business Unit DJ BASIN			District 15		Well Config DEVIATED		
KB - GL / MSL (ft... 11.00		Spud Date 8/14/1993		P & A Date		Well Production Status PR			SoRT No
Comment DIR, 670' FSL & 1945 FWL									
Surface Location (Congressional)									
Qtr 3 SE	Qtr 4 SW	Section 3	Twtnshp 4	Twtnsh... N	Range 65	Rng E/... W	Actual Latitude (°) 40.33598862	Actual Longitude (°) -104.65172528	
Wellbore Sections									
Section Des			Size (in)			Act Top, MD (ftKB)		Act Btm, MD (ftKB)	
SURFACE			12 1/4			11		522	
PRODUCTION			7 7/8			522		7,704	
Casing Strings									
Csg Des			Run Date		OD (in)	Wt/Len (lb/ft)	Grade	Top, MD (ftKB)	MD (ftKB)
Surface			8/14/1993		8 5/8	23.00	M-50	11.0	508.0
Production			8/22/1993		4 1/2	11.60	M-75	11.0	7,704.0
Cement									
Des					Start Date		Top (ftKB)		Btm (ftKB)
SURFACE CASING CEMENT					8/14/1993		11.0		508.0
PRODUCTION CASING CEMENT					8/22/1993		3,534.0		3,620.0
PRODUCTION CASING CEMENT					8/22/1993		5,707.0		7,704.0
Zone Statuses									
Zone Name		Status Date	Status	Fluid Type	Job			Prod Method	
NIORARA		9/20/1993	PR		DRILLING/COMPLETION - ORIGINAL, 8/14/1993...				
CODELL		6/19/1999	PR		RE-FRAC, 6/11/1999 00:00				
Perforation Data									
Linked Zone			Bnch/Stg	Entered Shot Total	Top (ftKB)		Btm (ftKB)		Date
NIORARA, ORIGINAL HOLE				24	7,190.00		7,333.00		9/4/1993
CODELL, ORIGINAL HOLE				40	7,560.00		7,568.00		6/14/1999
CODELL, ORIGINAL HOLE				9	7,560.00		7,568.00		9/4/1993
Stimulation Intervals									
Zone					Start Date		Top (ftKB)		Btm (ftKB)
NIORARA-CODELL, ORIGINAL HOLE					9/9/1993		7,190.0		7,568.0
CODELL, ORIGINAL HOLE					6/16/1999		7,558.0		7,568.0
Other In Hole									
Run Date		Des			Make		OD (in)	Top (ftKB)	Btm (ftKB)
6/18/1999		Sand Fill					4	7,578.0	7,667.0
Logs									
Date		Type				Top, MD (ftKB)		Btm, MD (ftKB)	
8/23/1993		GAMMA RAY				0.0		7,650.0	
9/4/1993		CEMENT BOND				3,400.0		7,647.0	
Plug Back Total Depths									
Date		Type		Com					Depth (ftKB)
9/4/1993		CEMENT PLUG		DEPTH LOGGER					7,652.0
6/18/1999		FILL		FILL					7,578.0