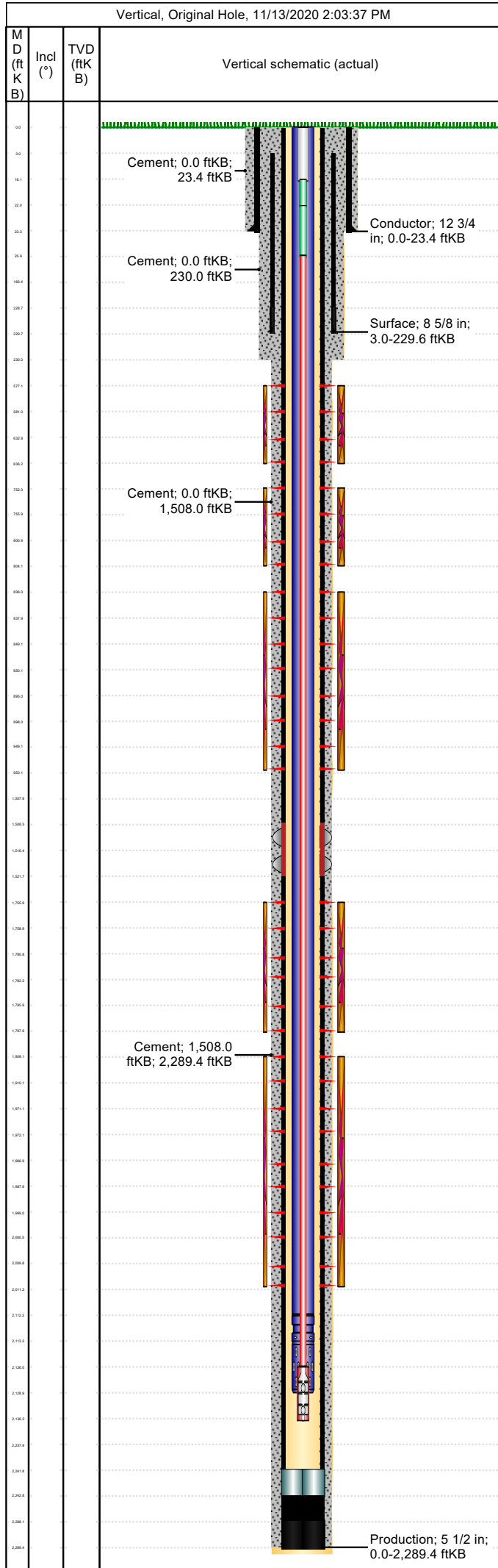


API/UWI 05071086520000	Location T34S-R67W-S07	Field Name Purgatoire River	Permit Number 2005430	State/Province Colorado	Well Configuration Type Vertical
Gr Elev (ft) 7,862.00	Casing Flange Elevation (ft)	KB-Ground Distance (ft) 0.00	KB-Casing Flange Distance (ft)	Spud Date 2/13/2006 00:00	Rig Release Date 2/15/2006 00:00

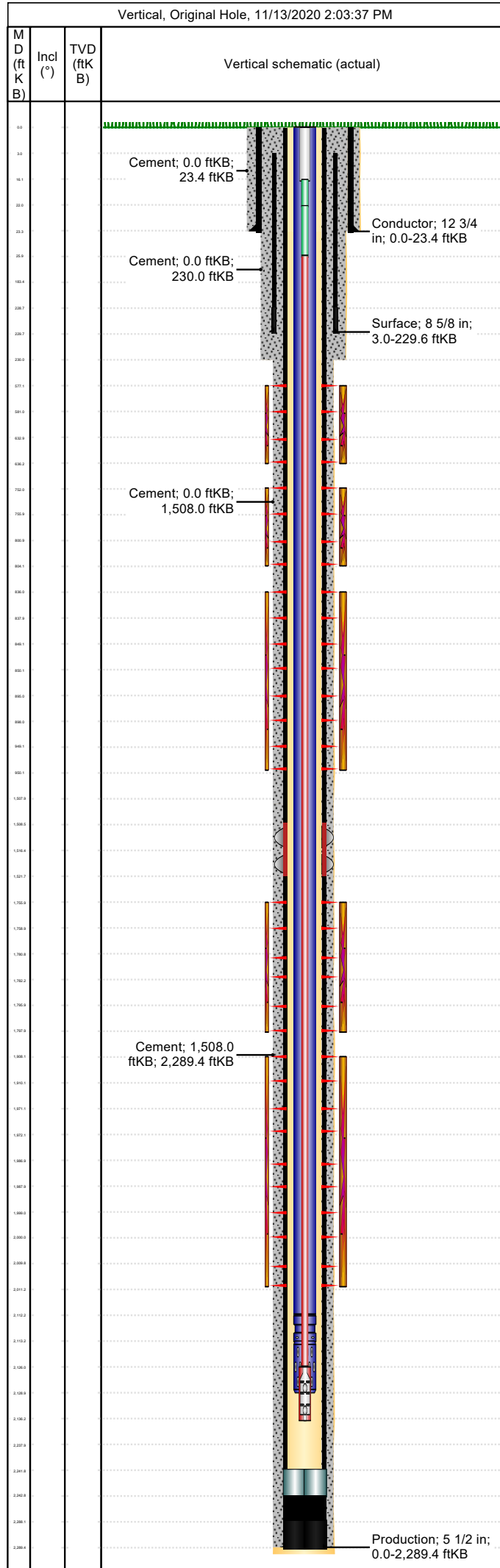


Wellbore									
Wellbore Name			Profile Type			Vertical Section Direction (°)			
Section Des		Size (in)		Act Top (ftKB)		Act Btm (ftKB)			
Kick Offs & Key Depths									
Type			Top Depth (ftKB)			Depth Top (TVD) (ftKB)			
Wellhead									
Type									
Des		Make		Model		SN		WP Top (psi)	
Last Mud Check									
Date	Type	Depth (ftKB)	Dens (lb/gal)	Vis (s/qt)	Gel 10s (lb/100ft²)	Gel 10m (lb/100ft²)	PV (cP)	YP (lb/100ft²)	
Casing									
Casing Description Conductor			Run Date 2/13/2006 00:00		Set Depth (ftKB) 23.4		Wellbore Original Hole		
Centralizers					Scratchers				
Jts	Item Des	OD (in)	ID (in)	Wt (lb/ft)	Grade	Len (ft)	Top (ftKB)	Btm (ftKB)	
1	Casing Joints	12 3/4		35.00	ST&C	23.40	0.0	23.4	
Casing Description Surface			Run Date 2/13/2006 00:00		Set Depth (ftKB) 229.6		Wellbore Original Hole		
Centralizers					Scratchers				
Jts	Item Des	OD (in)	ID (in)	Wt (lb/ft)	Grade	Len (ft)	Top (ftKB)	Btm (ftKB)	
4	Casing Joints	8 5/8	7.92	32.00	J-55	180.47	3.0	183.5	
1	Float Valve	8 5/8	7.92			0.00	183.5	183.5	
1	Float Joint	8 5/8	7.92			45.12	183.5	228.6	
1	Cement Guide Shoe	8 5/8	7.92			1.00	228.6	229.6	
Casing Description Production			Run Date 2/15/2006 00:00		Set Depth (ftKB) 2,289.4		Wellbore Original Hole		
Centralizers					Scratchers				
Jts	Item Des	OD (in)	ID (in)	Wt (lb/ft)	Grade	Len (ft)	Top (ftKB)	Btm (ftKB)	
37	Casing Joints	5 1/2	4.89	17.00	J-55	1,508.48	0.0	1,508.5	
1	DV Tool	5 1/2	4.89			8.00	1,508.5	1,516.5	
1	External Casing Packer	5 1/2	4.89			5.20	1,516.5	1,521.7	
17	Casing Joints	5 1/2	4.89	17.00	J-55	719.98	1,521.7	2,241.7	
1	Float Collar	5 1/2	0.00			1.20	2,241.7	2,242.9	
1	Float Joint	5 1/2	0.00	17.00	J-55	45.10	2,242.9	2,288.0	
1	Float Shoe	5 1/2	0.00			1.40	2,288.0	2,289.4	
Cement: <Description?>									
Cementing Start Date			Cementing End Date			Wellbore			
Evaluation Method			Cement Evaluation Results						
Comment									
Cement Stage: <Description?>									
Top Depth (ftKB)		Bottom Depth (ftKB)		Full Return?	Vol Cement	Top Plug?		Bottom Plug?	
Initial Pump Rate (bbl/min)		Final Pump Rate (bbl/min)		Avg Pump Rate (bbl/min)		Final Pump Pressure (psi)		Plug Bump Pressure (psi)	
Pipe Reciprocated?		Stroke (ft)		Reciprocation Rate (spm)		Pipe Rotated?		Pipe RPM (rpm)	
Tagged Depth (ftKB)		Tag Method		Depth Plug Drilled Out To (ft)		Drill Out Diameter (in)		Drill Out Date	
Cement Fluid: <Description?>									
Fluid Type		Fluid Description				Amount (sack)	Class	Volume Pumped (bbl)	
Estimated Top (ftKB)		Est Btm (ftKB)		Yield (ft³/sack)		Mix H2O Ratio (gal/sack)		Free Water (%)	
Density (lb/gal)		Plastic Viscosity (cP)		Thickening Time (hr)		1st Compressive Strength (psi)			

**Well Name: Apache Canyon 07-05**

**Conductor**

API/UWI 05071086520000	Location T34S-R67W-S07	Field Name Purgatoire River	Permit Number 2005430	State/Province Colorado	Well Configuration Type Vertical
Gr Elev (ft) 7,862.00	Casing Flange Elevation (ft)	KB-Ground Distance (ft) 0.00	KB-Casing Flange Distance (ft)	Spud Date 2/13/2006 00:00	Rig Release Date 2/15/2006 00:00



**Cement Fluid Additives**

Add	Type	Conc
-----	------	------

--	--	--