



RADIAL BOND
GAMMA RAY
COLLAR LOG

Company: EXACTION OIL AND GAS
Well: ISLAND GROVE 2-32
Field: MATTENBERG
County: WELD
State: COLORADO
Country: USA

Location: SHL: 1627 FSL & 272 FWL
BHL: 461 FNL & 1325 FWL
SEC: 32 TWP: 6N RGE: 68W

Log Measured from: KELLY BUSHING
Drilling Measured from: KELLY BUSHING
Permanent datum: GROUND LEVEL Elevation: 4847
Elevation: K.R. 4852
O.T. 4851
G.L. 4847

Date: 13-Apr-2021
Run Number: 11531
Depth (feet): 1657
Bottom Logged Interval: SURFACE
Log Interval: SURFACE
Type Fluid: WATER
Density / Viscosity: ---
Mk. Recorded Temp: 83

Time Well Rested: 199
Time Logged on Bottom: 13:00
ROA: 13:00
Equipment Number: 8035
Recorder By: JIM NERIE
Witnessed By: MRS. CASEY WILKINS

Run Number: BRN
From: TO
Size: 28#
Tubing Record From: TO

Running Record: Size: 28#
Surfacing String: WVF5T
Production String: 7"
Bottom: 199

Company: EXACTION OIL AND GAS
Well: ISLAND GROVE 2-32
Field: MATTENBERG
County: WELD
State: COLORADO
Country: USA

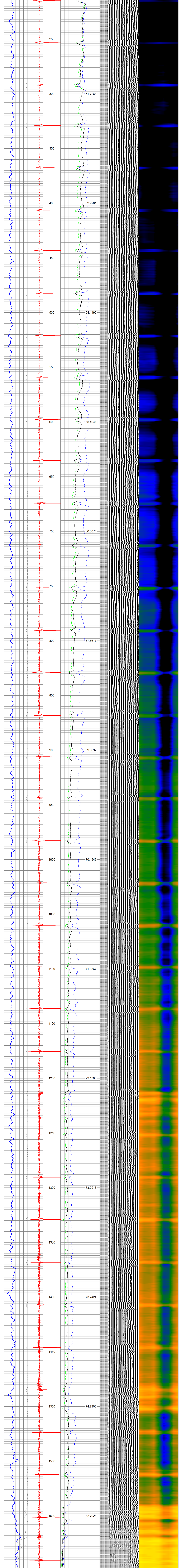
<<< Fold Here >>>

All interpretations are opinions based on inferences from electrical or other measurements and we cannot and do not guarantee the accuracy or correctness of any interpretation, and we shall not, except in the case of gross or willful negligence on our part, be liable or responsible for any loss, costs, damages, or expenses incurred or sustained by anyone resulting from any interpretation made by any of our officers, agents or employees. These interpretations are also subject to our general terms and conditions set out in our current Price Schedule.

Comments

LOG CALIBRATED @ 200'

Database File: island grove 2-32.db
Dataset Pathname: pas840
Presentation Format: bdcgreg
Dataset Creation: Tue Apr 13 13:01:57 2021
Charted by: Depth in Feet scaled 1:240



0 GR (GAPI) 200 CCL\$1 0 AMPMIN 100 200 WVF5FT (usec) 1200 1 SECTORS 8
5 CCL\$1 -0.55 0.3 0.6 AMPMAX 100
400 TT3FT (usec) 200 0 AMP3FT (mV) 100
GCT_Temp (degF)