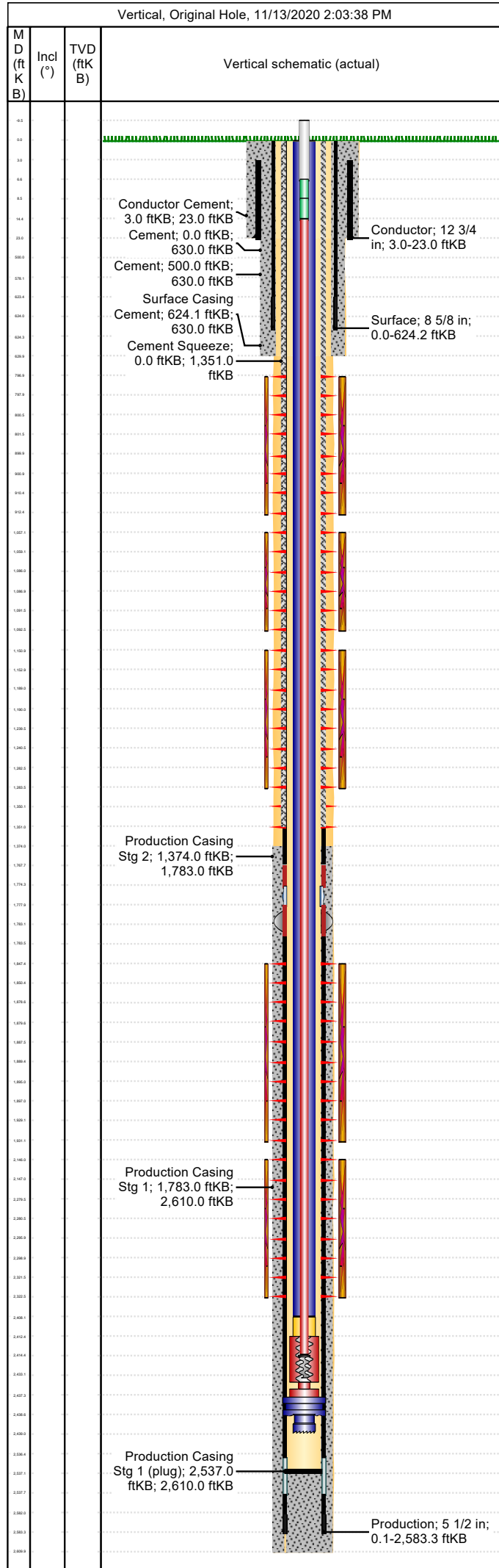


Well Name: Apache Canyon 06-08

Conductor

API/UWI 05071087900000	Location T34S-R67W-S06	Field Name Purgatoire River	Permit Number 20061403	State/Province Colorado	Well Configuration Type Vertical
Gr Elev (ft) 8,033.00	Casing Flange Elevation (ft)	KB-Ground Distance (ft) 0.00	KB-Casing Flange Distance (ft)	Spud Date 7/16/2006 10:00	Rig Release Date 7/20/2006 14:30



Wellbore									
Wellbore Name			Profile Type			Vertical Section Direction (°)			
Section Des		Size (in)		Act Top (ftKB)		Act Btm (ftKB)			
Kick Offs & Key Depths									
Type		Top Depth (ftKB)			Depth Top (TVD) (ftKB)				
Wellhead									
Type									
Des		Make		Model		SN		WP Top (psi)	
Last Mud Check									
Date	Type	Depth (ftKB)	Dens (lb/gal)	Vis (s/qt)	Gel 10s (lb/100ft²)	Gel 10m (lb/100ft²)	PV (cP)	YP (lb/100ft²)	
Casing									
Casing Description Conductor			Run Date 7/16/2006 10:45		Set Depth (ftKB) 23.0		Wellbore Original Hole		
Centralizers				Scratchers					
Jts	Item Des	OD (in)	ID (in)	Wt (lb/ft)	Grade	Len (ft)	Top (ftKB)	Btm (ftKB)	
1	Casing Joint	12 3/4	12.00	35.00	L/S	20.00	3.0	23.0	
Casing Description Surface			Run Date 7/17/2006 14:00		Set Depth (ftKB) 624.2		Wellbore Original Hole		
Centralizers				Scratchers					
Jts	Item Des	OD (in)	ID (in)	Wt (lb/ft)	Grade	Len (ft)	Top (ftKB)	Btm (ftKB)	
13	Casing Joints	8 5/8	8.10	24.00	J-55	578.10	0.0	578.1	
1	Insert Float Valve	8 5/8	8.10	24.00	J-55	0.00	578.1	578.1	
1	Casing Joints	8 5/8	8.10	24.00	J-55	45.10	578.1	623.2	
1	Guide Shoe	8 5/8	8.10	24.00	J-55	1.00	623.2	624.2	
Casing Description Production			Run Date 7/20/2006 14:15		Set Depth (ftKB) 2,583.3		Wellbore Original Hole		
Centralizers				Scratchers					
Jts	Item Des	OD (in)	ID (in)	Wt (lb/ft)	Grade	Len (ft)	Top (ftKB)	Btm (ftKB)	
40	Casing Joints	5 1/2	4.95	15.50	J-55	1,767.78	0.1	1,767.8	
1	Casing Pup Joint	5 1/2	4.95	15.50	J-55	6.50	1,767.8	1,774.3	
1	Stage Collar	5 1/2	4.95	15.50	J-55	3.50	1,774.3	1,777.8	
1	External Casing Packer	5 1/2	4.95	15.50	J-55	5.50	1,777.8	1,783.3	
17	Casing Joints	5 1/2	4.95	15.50	J-55	753.21	1,783.3	2,536.5	
1	Float Collar	5 1/2	4.95	15.50	J-55	1.25	2,536.5	2,537.8	
1	Casing Joints	5 1/2	4.95	15.50	J-55	44.30	2,537.8	2,582.1	
1	Float Shoe	5 1/2	4.95	15.50	J-55	1.25	2,582.1	2,583.3	
Cement: <Description?>									
Cementing Start Date		Cementing End Date			Wellbore				
Evaluation Method		Cement Evaluation Results							
Comment									
Cement Stage: <Description?>									
Top Depth (ftKB)		Bottom Depth (ftKB)		Full Return?	Vol Cement	Top Plug?		Bottom Plug?	
Initial Pump Rate (bbl/min)		Final Pump Rate (bbl/min)		Avg Pump Rate (bbl/min)		Final Pump Pressure (psi)		Plug Bump Pressure (psi)	
Pipe Reciprocated?		Stroke (ft)		Reciprocation Rate (spm)		Pipe Rotated?		Pipe RPM (rpm)	
Tagged Depth (ftKB)		Tag Method		Depth Plug Drilled Out To (ft)		Drill Out Diameter (in)		Drill Out Date	

Well Name: Apache Canyon 06-08

Conductor

API/UWI 05071087900000	Location T34S-R67W-S06	Field Name Purgatoire River	Permit Number 20061403	State/Province Colorado	Well Configuration Type Vertical
Gr Elev (ft) 8,033.00	Casing Flange Elevation (ft)	KB-Ground Distance (ft) 0.00	KB-Casing Flange Distance (ft)	Spud Date 7/16/2006 10:00	Rig Release Date 7/20/2006 14:30

