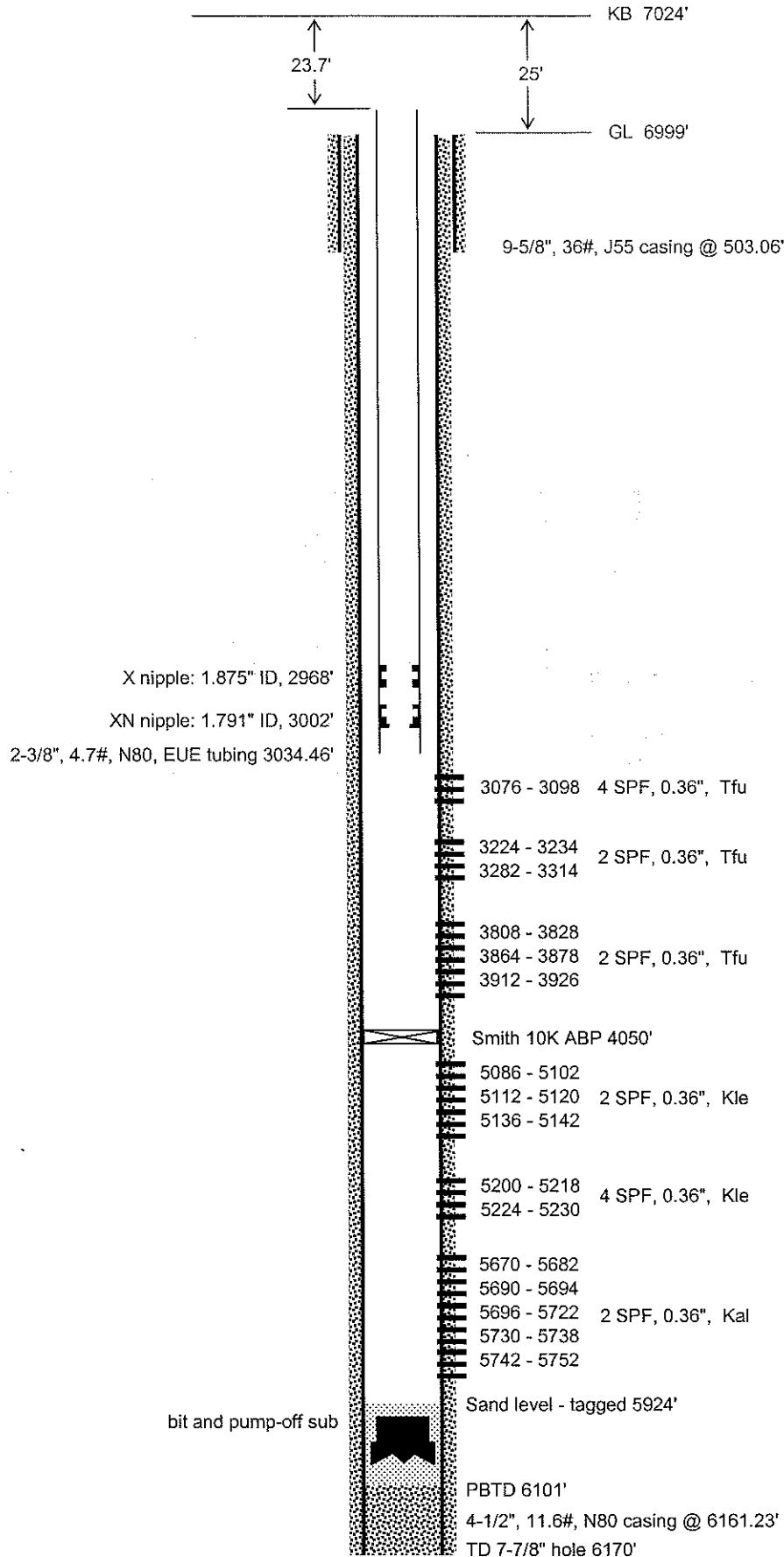


Stateland 7
SE NW Sec 21 T12N R100W
Moffat County, Colorado
After Recompletion 6-1-06, WRJ
All depths are KB measurements unless otherwise stated



TUBING REPORT

WELL NAME: STATE LAND WELL #7		AS OF: May 31, 2006				
QTY	DESCRIPTION:	O.D.	I.D.	LENGTH	DEPTH (KBM)	
	KB MEASUREMENT: 25.00 FT. FROM GROUND LEVEL				TOP	BOTTOM
	23.70 FT. FROM TBG.SPOOL					
	FOOTAGE OUT FOR COMPRESSION.					
1	2-3/8"X 4-1/16 MTH-2.TBG HANGER. (Tapped for BPV)	4.063	1.940	0.25	23.70	23.95
93 jts	2-3/8", 4.7lb/ft, L-80, 8 RD.THD, EUE TUBING	3.063	1.995	2,944.18	23.95	2,968.13
1	X- NIPPLE	3.063	1.875	1.18	2,968.13	2,969.31
1 JT	2-3/8", 4.7lb /ft. L-80, 8RD.THD, EUE TUBING	3.063	1.995	32.73	2,969.31	3,002.04
1	XN- NIPPLE	3.063	1.791	1.25	3,002.04	3,003.29
1 JT	2-3/8", 4.7lb /ft. L-80, 8RD.THD, EUE TUBING	3.063	1.995	30.77	3,003.29	3,034.06
1	2 3/8" eue coupling	3.063	2.375	0.40	3,034.06	3,034.46
Tubing Landed at (KBM) _____					3,034.46	

NOTES: The above tubing is landed at 3,034.46' K.B.M., or 23.70' below K.B. in a 4- 1/16" 10,000# by 11", 5,000#, WOODGROUP tubing head with a MTH-2, 4" Nom. tubing hanger.

SIGN: *Michael R. Sliger*

DATE: 05/31/06