

## Attachment B



## WELLHEAD ABANDONMENT FORM

<b>SITE NAME:</b> Tanner K 33-14 Wellhead							<b>DATE:</b> 3/10/2021	<b>REM. PROJECT #:</b> 16726	<b>WEATHER:</b> Overcast, 50s		
<b>SITE DIRECTIONS:</b> CR 29/HWY 85 S 100', E 0.2, S 0.2, W into							<b>CLIENT:</b> PDC				
<b>LEGALS AND LAT/LONG:</b> 40.262160, -104.784075							<b>TASMAN PERSONNEL:</b> Jake McCarver				
<b>SOIL TYPES:</b> Silty Sand - SM							<b>SURFACE GRADIENT:</b> Southeast				
SOIL SAMPLING							FACILITY INFRASTRUCTURE				
Date/Time	Soil Sample ID	PID (ppm)	Visual	Olfactory	Photo?	Grab or Lab Sample?	EQUIPMENT		Quantity		
							Above Ground Storage Tank (AST)		0		
3/10/2021 13:27	FLR01 @ 3'	8.4	No Staining	No Odor	Yes	Lab	Buried or Partially Buried Vessel		0		
3/10/2021 13:28	WH01 @ 2.5'	1.5	No Staining	No Odor	Yes	Lab	Separator		0		
3/10/2021 13:37	WHS01-N	1.5	No Staining	No Odor	Yes	Grab	Emission Control Device (ECD)		0		
3/10/2021 13:37	WHS01-W	0.8	No Staining	No Odor	Yes	Grab	Dump Line		0		
3/10/2021 13:40	WHS01-S	0.7	No Staining	No Odor	Yes	Grab	Wellhead		1		
3/10/2021 13:41	WHS01-E	0.6	No Staining	No Odor	Yes	Grab	Flowline		1		
3/10/2021 13:39	BKG01 @ 2.5'	0.3	No Staining	No Odor	Yes	Lab	Other:				
3/10/2021 13:56	FL-01 @ 4'	0.3	No Staining	No Odor	Yes	Grab	Soil Loads Removed				
3/10/2021 14:00	FL-02 @ 4'	0.2	Organic Content	No Odor	Yes	Grab	<b>IMPACTED SOIL IDENTIFIED?</b> Yes, impacts observed beneath separator				
3/10/2021 14:03	FL-03 @ 4'	0.3	No Staining	No Odor	Yes	Grab	<b>ESTIMATED VOLUME OF IMPACTS:</b>				
3/10/2021 14:07	FL-04 @ 4'	0.3	No Staining	No Odor	Yes	Grab	<b>Date</b>		<b>Number</b>	<b>CY</b>	
3/10/2021 14:10	FL-05 @ 4'	0.2	No Staining	No Odor	Yes	Grab					
3/10/2021 14:13	FL-06 @ 4'	0.4	No Staining	No Odor	Yes	Grab					
3/10/2021 14:16	FL-07 @ 4'	0.1	No Staining	No Odor	Yes	Grab					
3/10/2021 14:21	FL-08 @ 4'	0.3	No Staining	No Odor	Yes	Grab					
3/10/2021 14:26	FL-09 @ 4'	0.2	No Staining	No Odor	Yes	Grab	<b>Total Removed</b>		0	0	
3/10/2021 14:29	FL-10 @ 4'	0.1	No Staining	No Odor	Yes	Grab	<b>Disposal Facility:</b>				
3/10/2021 14:32	FL-11 @ 4'	0.0	No Staining	No Odor	Yes	Grab	Groundwater Recovery				
3/10/2021 15:25	FL-12@3'	0.7	No Staining	No Odor	Yes	Grab	<b>DATE GW ENCOUNTERED:</b>			<b>DEPTH:</b>	
3/10/2021 15:35	FL-13@4'	0.1	No Staining	No Odor	Yes	Grab	<b>GROUNDWATER IN CONTACT WITH IMPACTED SOIL?</b>				
3/10/2021 15:41	FL-14@4'	0.2	No Staining	No Odor	Yes	Grab					
3/10/2021 15:46	FL-15@4'	0.2	No Staining	No Odor	Yes	Grab	<b>LNAPL OR SHEEN OBSERVED ON GW?</b>				
GROUNDWATER SAMPLING							Date		BBLs		
Date/Time	Groundwater Sample ID	Depth Collected	Turbid?	Sheen?	Odor?	Photo?					
							<b>Total Removed</b>		0		
							<b>Disposal Facility:</b>				

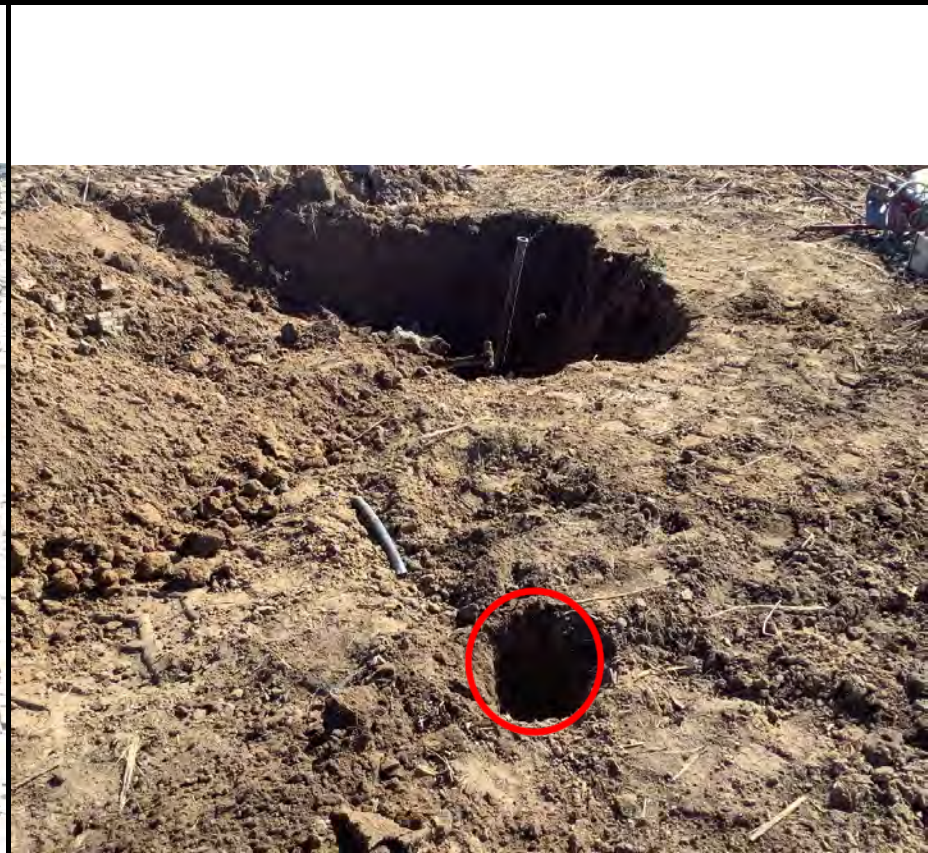
**Photographic Log**



<b>Equipment ID:</b>		<b>Equipment Type:</b>	
<b>Material:</b>	<b>Volume:</b>	<b>Contents:</b>	
<b>Notes/Conditions:</b> SEP01 footprint			

<b>Equipment ID:</b>		<b>Equipment Type:</b>	
<b>Material:</b>	<b>Volume:</b>	<b>Contents:</b>	
<b>Notes/Conditions:</b> Remediation well array			

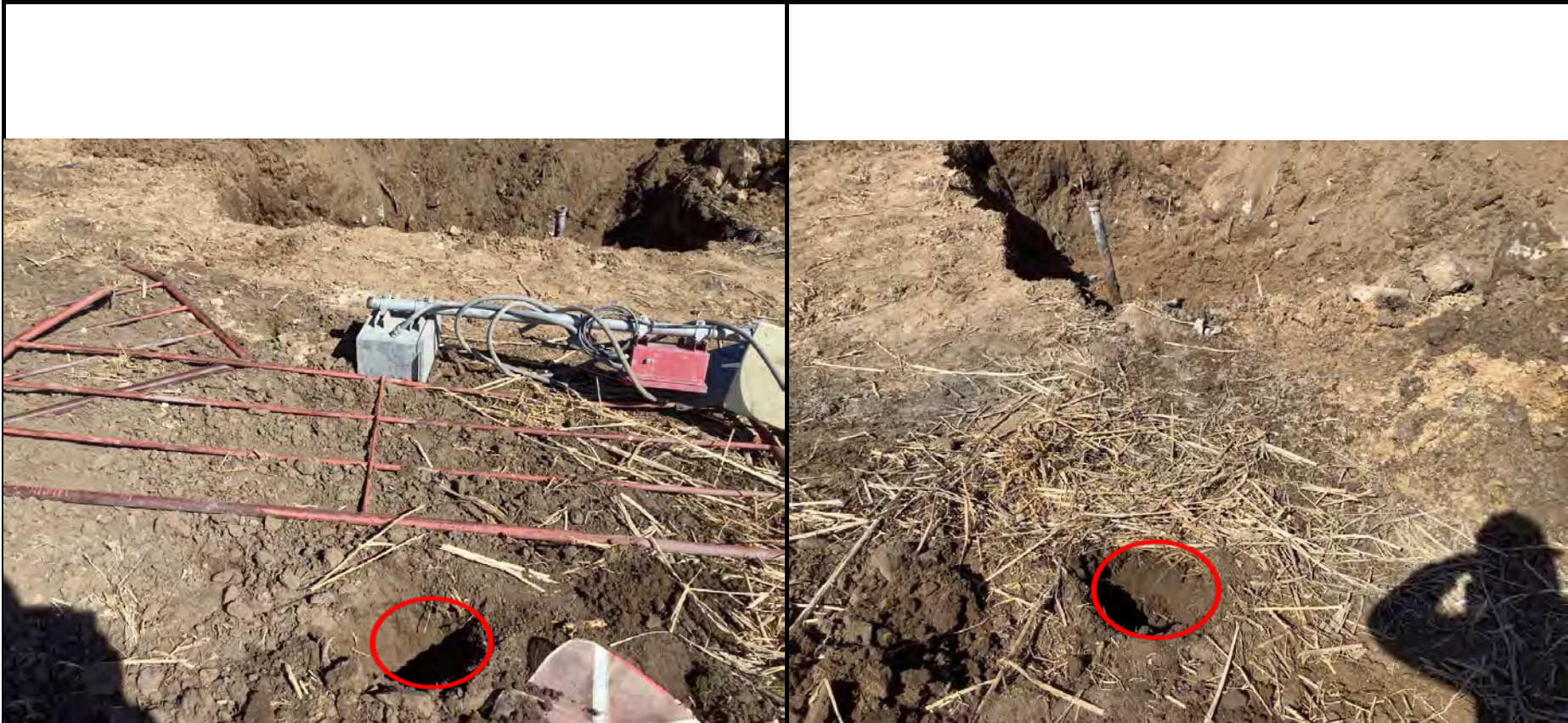
**Photographic Log**



<b>Equipment ID:</b>		<b>Equipment Type:</b>	
<b>Material:</b>	<b>Volume:</b>	<b>Contents:</b>	
<b>Notes/Conditions:</b> FLR01 AND WH01 SAMPLE LOCATIONS			

<b>Equipment ID:</b>		<b>Equipment Type:</b>	
<b>Material:</b>	<b>Volume:</b>	<b>Contents:</b>	
<b>Notes/Conditions:</b> WHS01-N LOCATION			

**Photographic Log**



<b>Equipment ID:</b>	<b>Equipment Type:</b>
<b>Material:</b>	<b>Volume:</b>
<b>Contents:</b>	

**Notes/Conditions:** WHS01-W LOCATION

<b>Equipment ID:</b>	<b>Equipment Type:</b>
<b>Material:</b>	<b>Volume:</b>
<b>Contents:</b>	

**Notes/Conditions:** WHS01-S LOCATION

**Photographic Log**



<b>Equipment ID:</b>		<b>Equipment Type:</b>	
<b>Material:</b>	<b>Volume:</b>	<b>Contents:</b>	

**Notes/Conditions:** WHS01-E LOCATION

<b>Equipment ID:</b>		<b>Equipment Type:</b>	
<b>Material:</b>	<b>Volume:</b>	<b>Contents:</b>	

**Notes/Conditions:** BKG01 LOCATION

**Photographic Log**



<b>Equipment ID:</b>		<b>Equipment Type:</b>	
<b>Material:</b>	<b>Volume:</b>	<b>Contents:</b>	
<b>Notes/Conditions:</b> FL-01			

<b>Equipment ID:</b>		<b>Equipment Type:</b>	
<b>Material:</b>	<b>Volume:</b>	<b>Contents:</b>	
<b>Notes/Conditions:</b> FL-02			

**Photographic Log**



<b>Equipment ID:</b>		<b>Equipment Type:</b>	
<b>Material:</b>	<b>Volume:</b>	<b>Contents:</b>	
<b>Notes/Conditions:</b> FL-03			

<b>Equipment ID:</b>		<b>Equipment Type:</b>	
<b>Material:</b>	<b>Volume:</b>	<b>Contents:</b>	
<b>Notes/Conditions:</b> FL-04			

**Photographic Log**



<b>Equipment ID:</b>		<b>Equipment Type:</b>	
<b>Material:</b>	<b>Volume:</b>	<b>Contents:</b>	
<b>Notes/Conditions:</b> FL-05			

<b>Equipment ID:</b>		<b>Equipment Type:</b>	
<b>Material:</b>	<b>Volume:</b>	<b>Contents:</b>	
<b>Notes/Conditions:</b> FL-06			

**Photographic Log**



<b>Equipment ID:</b>		<b>Equipment Type:</b>	
<b>Material:</b>	<b>Volume:</b>	<b>Contents:</b>	
<b>Notes/Conditions:</b> FL-07			

<b>Equipment ID:</b>		<b>Equipment Type:</b>	
<b>Material:</b>	<b>Volume:</b>	<b>Contents:</b>	
<b>Notes/Conditions:</b> FL-08			

**Photographic Log**

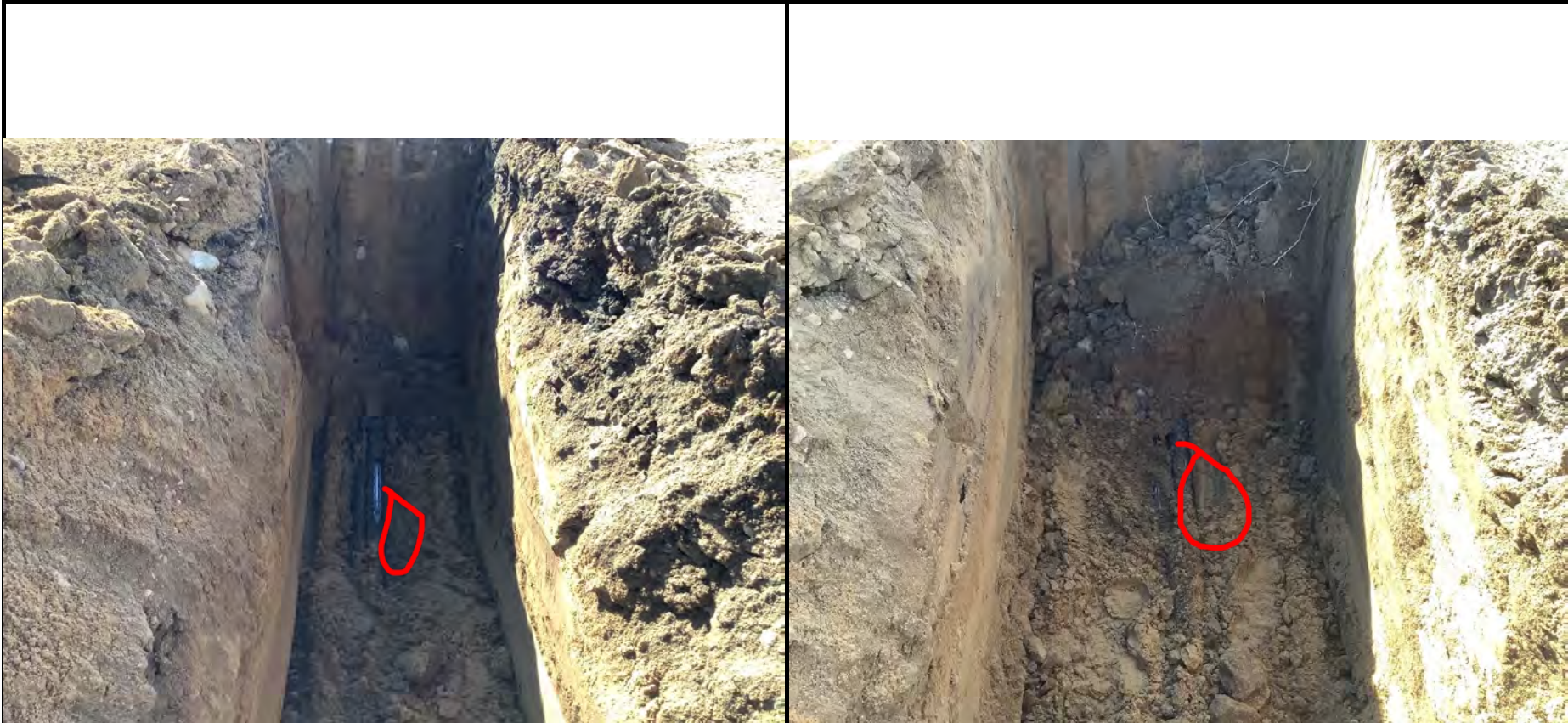
					
Material:	Volume:	Contents:	Material:	Volume:	Contents:
Notes/Conditions: FL-09			Notes/Conditions: FL-10		

Photographic Log



<b>Equipment ID:</b> FL-12		<b>Equipment Type:</b>		<b>Equipment ID:</b> FL-13		<b>Equipment Type:</b>	
<b>Material:</b>	<b>Volume:</b>	<b>Contents:</b>		<b>Material:</b>	<b>Volume:</b>	<b>Contents:</b>	
<b>Notes/Conditions:</b> FL-12@3'				<b>Notes/Conditions:</b> FL-13@4'			

### Photographic Log



<b>Equipment ID:</b> FL-14		<b>Equipment Type:</b>		<b>Equipment ID:</b> FL-15		<b>Equipment Type:</b>	
<b>Material:</b>	<b>Volume:</b>	<b>Contents:</b>		<b>Material:</b>	<b>Volume:</b>	<b>Contents:</b>	
<b>Notes/Conditions:</b> FL-14@4'				<b>Notes/Conditions:</b> FL-15@4'			



## WELLHEAD ABANDONMENT FORM

<b>SITE NAME:</b> Tanner K 33-14 Wellhead							<b>DATE:</b> 3/10/2021	<b>REM. PROJECT #:</b>	<b>WEATHER:</b> Overcast, 50s
<b>SITE DIRECTIONS:</b> CR 29/HWY 85 S 100', E 0.2, S 0.2, W into							<b>CLIENT:</b> PDC		
<b>LEGALS AND LAT/LONG:</b> 40.262160, -104.784075							<b>TASMAN PERSONNEL:</b> Jake McCarver		
<b>SOIL TYPES:</b> Silty Sand - SM							<b>SURFACE GRADIENT:</b> Southeast		
<b>SOIL SAMPLING</b>							<b>FACILITY INFRASTRUCTURE</b>		
Date/Time	Soil Sample ID	PID (ppm)	Visual	Olfactory	Photo?	Grab or Lab Sample?	EQUIPMENT	Quantity	
							Above Ground Storage Tank (AST)		
3/10/2021 15:51	FL-16@5'	0.1	No Staining	No Odor	Yes	Grab	Buried or Partially Buried Vessel		
3/10/2021 15:57	FL-17@4'	0.0	No Staining	No Odor	Yes	Grab	Separator		
3/10/2021 16:03	FL-18@4'	0.4	No Staining	No Odor	Yes	Grab	Emission Control Device (ECD)		
							Dump Line		
							Wellhead		
							Flowline		
							Other:		
							<b>Soil Loads Removed</b>		
							<b>IMPACTED SOIL IDENTIFIED?</b>		
							<b>ESTIMATED VOLUME OF IMPACTS:</b>		
							Date	Number	CY
							<b>Total Removed</b>	0	0
							<b>Disposal Facility:</b>		
							<b>Groundwater Recovery</b>		
							<b>DATE GW ENCOUNTERED:</b>	<b>DEPTH:</b>	
							<b>GROUNDWATER IN CONTACT WITH IMPACTED SOIL?</b>		
							<b>LNAPL OR SHEEN OBSERVED ON GW?</b>		
<b>GROUNDWATER SAMPLING</b>							Date	BBLs	
Date/Time	Groundwater Sample ID	Depth Collected	Turbid?	Sheen?	Odor?	Photo?			
							<b>Total Removed</b>	0	
							<b>Disposal Facility:</b>		

### Photographic Log



<b>Equipment ID:</b> FL-16		<b>Equipment Type:</b>		<b>Equipment ID:</b> FL-17		<b>Equipment Type:</b>	
<b>Material:</b>	<b>Volume:</b>	<b>Contents:</b>		<b>Material:</b>	<b>Volume:</b>	<b>Contents:</b>	
<b>Notes/Conditions:</b> FL-16@5'				<b>Notes/Conditions:</b> FL-17@4'			

**Photographic Log**


<b>Equipment ID:</b>		<b>Equipment Type:</b>		<b>Equipment ID:</b>		<b>Equipment Type:</b>	
<b>Material:</b>	<b>Volume:</b>	<b>Contents:</b>		<b>Material:</b>	<b>Volume:</b>	<b>Contents:</b>	
<b>Notes/Conditions:</b>				<b>Notes/Conditions:</b>			



<b>SITE NAME:</b> Tanner K 33-14 Flowline Excavation							<b>DATE:</b> 3/19/2021	<b>REM. PROJECT #:</b> 16726	<b>WEATHER:</b> Clear, 30s		
<b>SITE DIRECTIONS:</b> CR 29/HWY 85 S 100', E 0.2, S 0.2, W into							<b>CLIENT:</b> PDC				
<b>LEGALS AND LAT/LONG:</b> 40.262160, -104.784075							<b>TASMAN PERSONNEL:</b> Jake McCarver				
<b>SOIL TYPES:</b> Silty Sand - SM							<b>SURFACE GRADIENT:</b>				
<b>SOIL SAMPLING</b>							<b>FACILITY INFRASTRUCTURE</b>				
Date/Time	Soil Sample ID	PID (ppm)	Visual	Olfactory	Photo?	Grab or Lab Sample?	EQUIPMENT		Quantity		
							Above Ground Storage Tank (AST)				
3/19/2021 10:29	FL01-19-B @ 4.5'	1.9	Organic Content	No Odor	Yes	Lab	Buried or Partially Buried Vessel				
	FL01-19-N @ 4'	0.6	No Staining	No Odor	Yes	Grab	Separator				
	FL01-19-W @ 4'	0.5	No Staining	No Odor	Yes	Grab	Emission Control Device (ECD)				
	FL01-19-S @ 4'	0.1	No Staining	No Odor	Yes	Grab	Dump Line				
	FL01-19-E @ 4'	0.7	No Staining	No Odor	Yes	Grab	Wellhead				
							Flowline				
							Other:				
							<b>Soil Loads Removed</b>				
							<b>IMPACTED SOIL IDENTIFIED?</b> Yes				
							<b>ESTIMATED VOLUME OF IMPACTS:</b> < 9 CY				
							<b>Date</b>	<b>Number</b>	<b>CY</b>		
							3/19/2021	1	9		
							<b>Total Removed</b>		1	9	
							<b>Disposal Facility:</b> WM - Ault				
							<b>Groundwater Recovery</b>				
							<b>DATE GW ENCOUNTERED:</b>			<b>DEPTH:</b>	
							<b>GROUNDWATER IN CONTACT WITH IMPACTED SOIL?</b>				
							<b>LNAPL OR SHEEN OBSERVED ON GW?</b>				
<b>GROUNDWATER SAMPLING</b>							<b>Date</b>	<b>BBLs</b>			
Date/Time	Groundwater Sample ID	Depth Collected	Turbid?	Sheen?	Odor?	Photo?					
							<b>Total Removed</b>		0		
							<b>Disposal Facility:</b>				

Photographic Log

									
						Equipment ID:			Equipment Type:
Material:		Volume:	Contents:		Material:		Volume:	Contents:	
Notes/Conditions: <small>Base</small>					Notes/Conditions: <small>North</small>				

### Photographic Log

					
<b>Material:</b>	<b>Volume:</b>	<b>Contents:</b>	<b>Material:</b>	<b>Volume:</b>	<b>Contents:</b>
<b>Notes/Conditions:</b> West			<b>Notes/Conditions:</b> South		

**Photographic Log**


<b>Equipment ID:</b>		<b>Equipment Type:</b>		<b>Equipment ID:</b>		<b>Equipment Type:</b>	
<b>Material:</b>	<b>Volume:</b>	<b>Contents:</b>		<b>Material:</b>	<b>Volume:</b>	<b>Contents:</b>	
<b>Notes/Conditions:</b> East				<b>Notes/Conditions:</b>			