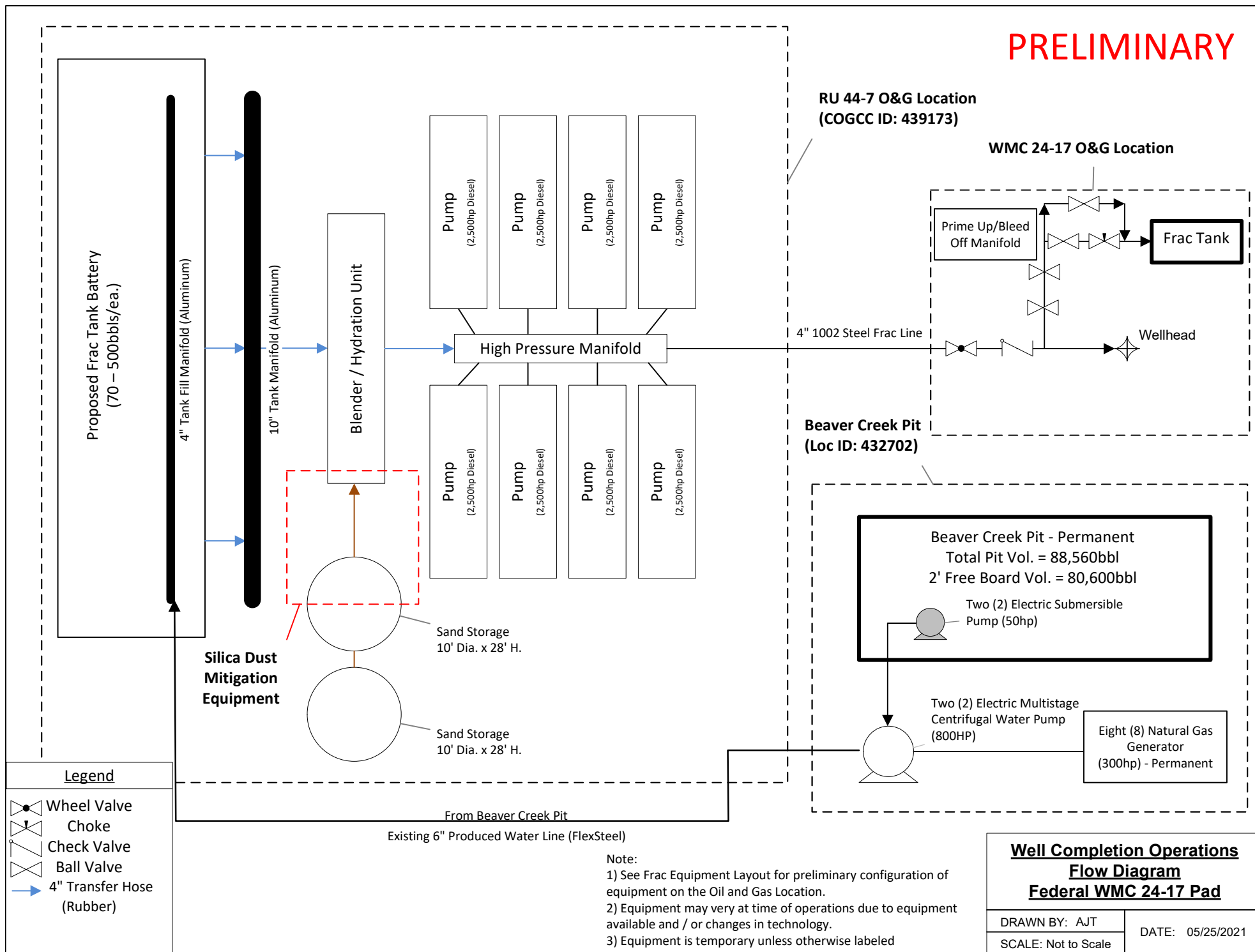
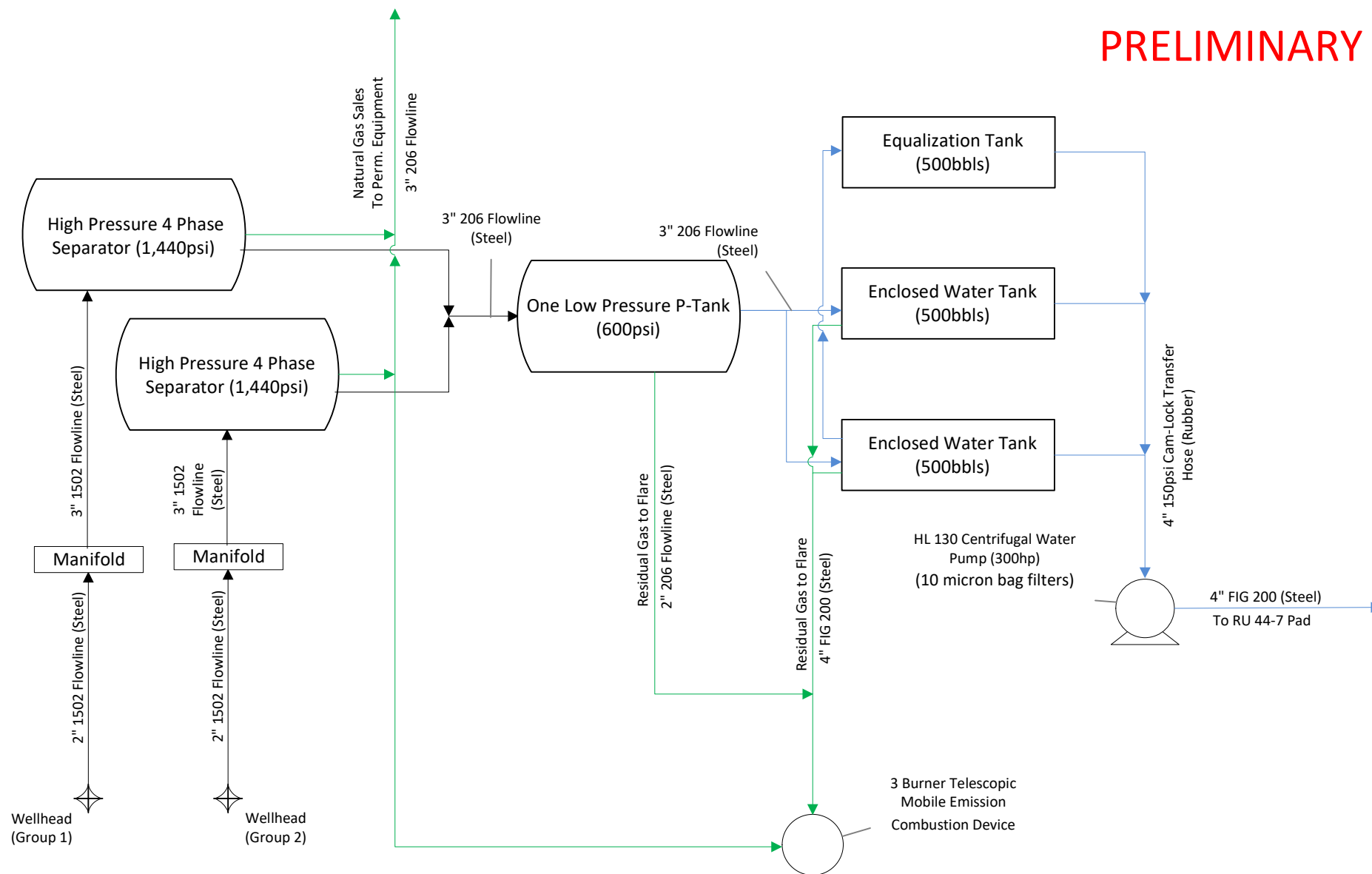


PRELIMINARY



PRELIMINARY



Note:

- 1) See Flowback Equipment Layout for preliminary configuration of equipment on the Oil and Gas Location.
- 2) Equipment may vary at time of operations due to equipment available and / or changes in technology.
- 3) Equipment is temporary unless otherwise labeled
- 4) Emission Combustion Device (ECD) - High Volume Combustor

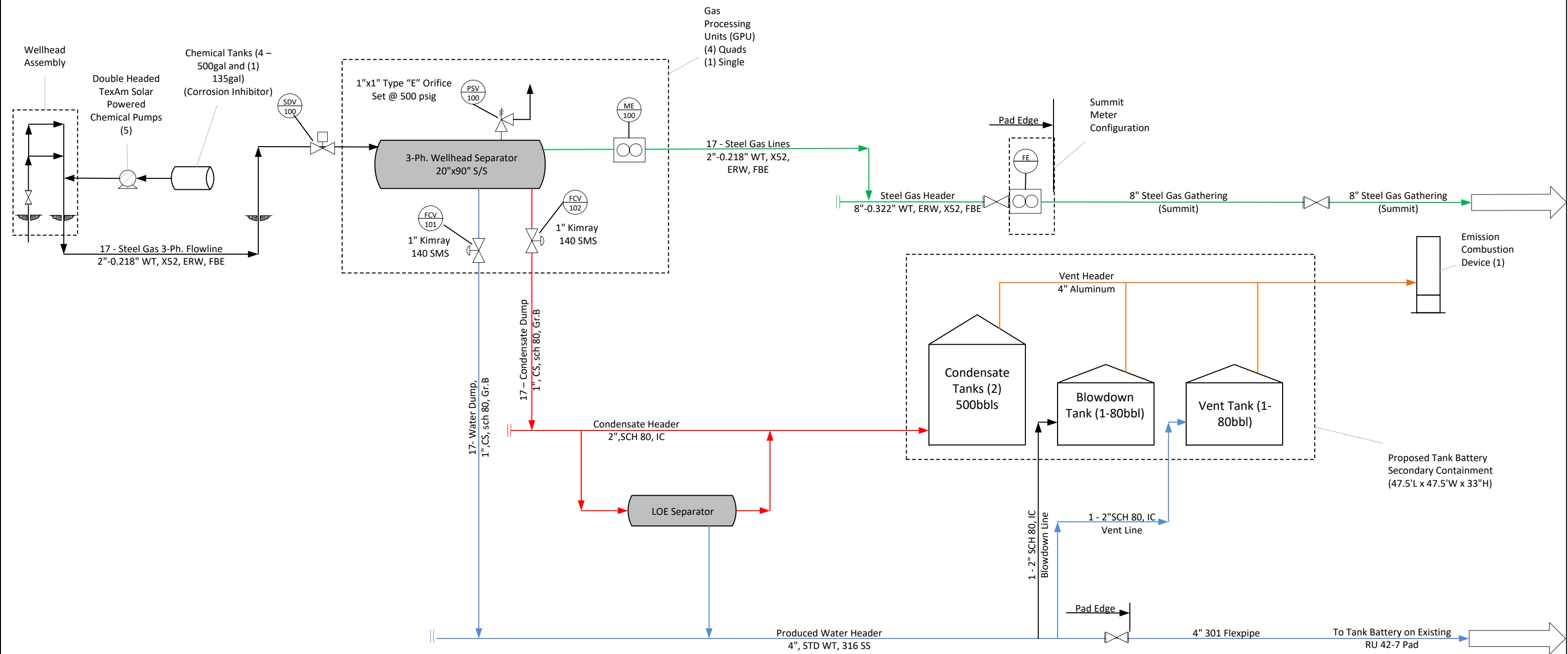
Flowback Operations Flow Diagram Federal WMC 24-17 Pad

DRAWN BY: AJT

SCALE: Not to Scale

DATE: 05/25/2021

PRELIMINARY



Legend

- FE Flow Element
- ME 100 Measurement Element
- FCV 101 Flow Control Valve
- PSV 100 Pressure Safety Valve
- SDV 100 Shut-down Valve

Notes:
(1) Emission Combustion Device (ECD) - 48" High Volume Combustor
(2) All equipment is Permanent, unless denoted as Temporary.

WMC 24-17 Pad
Production Operations
Process Flow Diagram

DATE:	5/25/2021	TEP Rocky Mountain, LLC
DRAWN BY:	SJM	
SCALE:	NOT TO SCALE	

