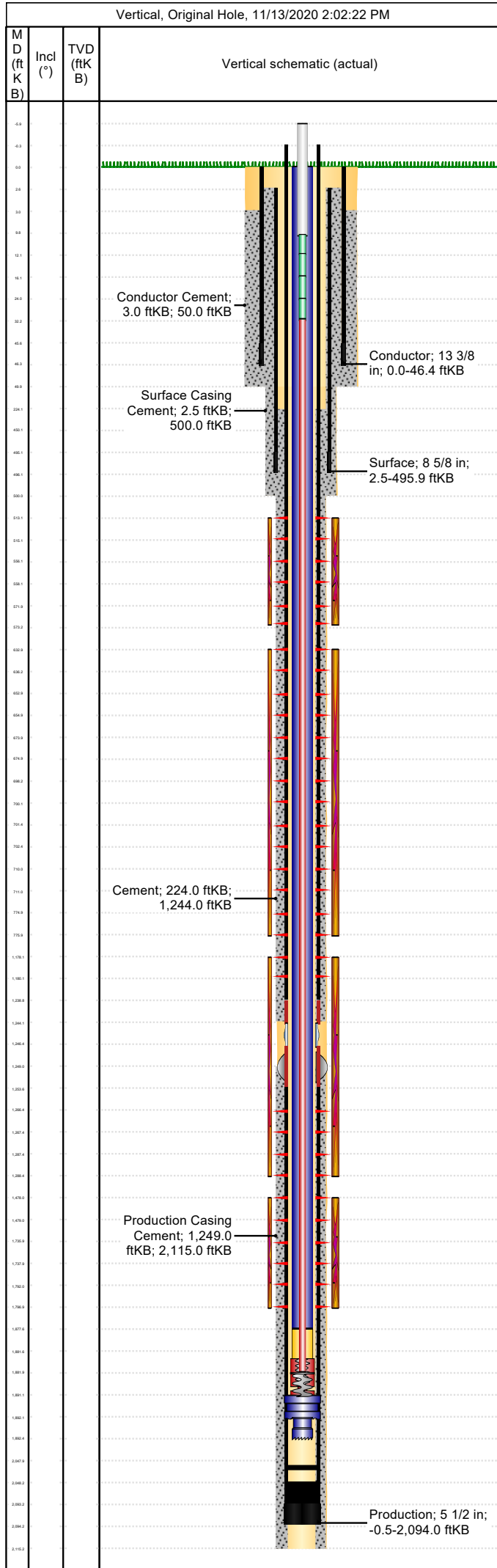


Well Name: Apache Canyon 05-11

Conductor

API/UWI 05071091320000	Location T34S-R67W-S05	Field Name Purgatoire River	Permit Number 20065935	State/Province Colorado	Well Configuration Type Vertical
Gr Elev (ft) 7,490.00	Casing Flange Elevation (ft)	KB-Ground Distance (ft) 0.00	KB-Casing Flange Distance (ft)	Spud Date 7/5/2007 10:30	Rig Release Date 7/7/2007 16:00

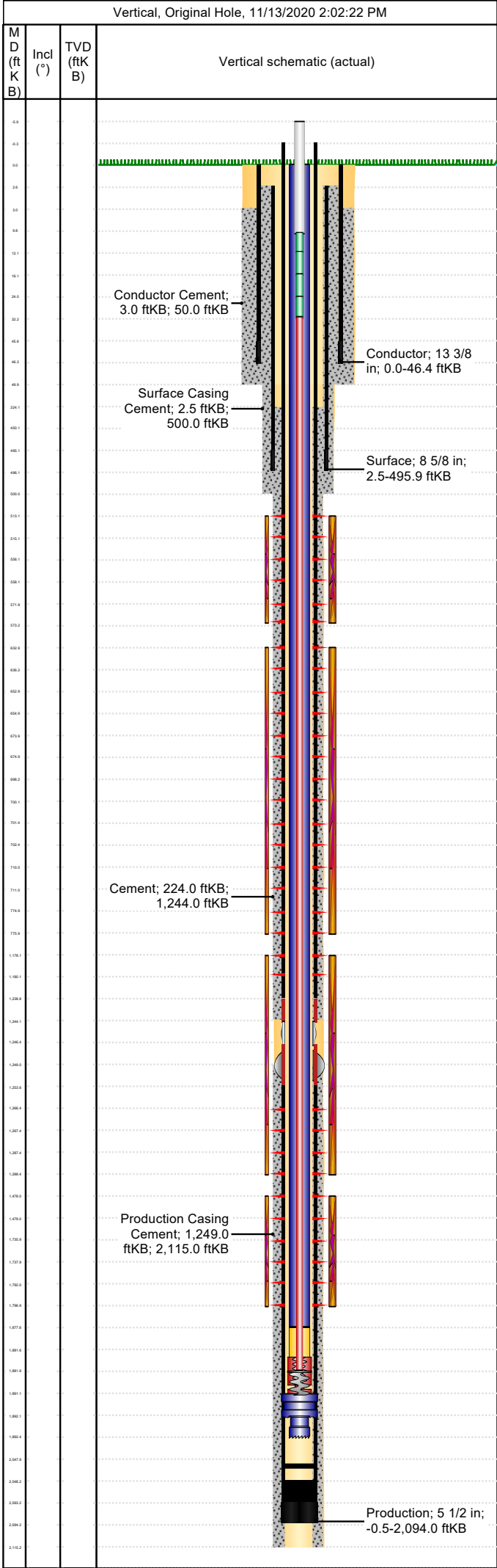


<b>Wellbore</b>									
Wellbore Name				Profile Type			Vertical Section Direction (°)		
Section Des		Size (in)		Act Top (ftKB)		Act Btm (ftKB)			
<b>Kick Offs &amp; Key Depths</b>									
Type		Top Depth (ftKB)				Depth Top (TVD) (ftKB)			
<b>Wellhead</b>									
Type									
Des		Make		Model		SN		WP Top (psi)	
<b>Last Mud Check</b>									
Date	Type	Depth (ftKB)	Dens (lb/gal)	Vis (s/qt)	Gel 10s (lb/100ft²)	Gel 10m (lb/100ft²)	PV (cP)	YP (lb/100ft²)	
<b>Casing</b>									
Casing Description Conductor				Run Date 7/5/2007 13:00		Set Depth (ftKB) 46.4		Wellbore Original Hole	
Centralizers 1				Scratchers					
Jts	Item Des	OD (in)	ID (in)	Wt (lb/ft)	Grade	Len (ft)	Top (ftKB)	Btm (ftKB)	
1	BGL	13 3/8	12.62	54.50	J-55	3.00	0.0	3.0	
1	Casing Joints	13 3/8	12.62	54.50	J-55	42.50	3.0	45.5	
1	Shoe	13 3/8	12.62			0.90	45.5	46.4	
Casing Description Surface				Run Date 7/6/2007 04:15		Set Depth (ftKB) 495.9		Wellbore Original Hole	
Centralizers 5				Scratchers					
Jts	Item Des	OD (in)	ID (in)	Wt (lb/ft)	Grade	Len (ft)	Top (ftKB)	Btm (ftKB)	
10	Casing Joints	8 5/8	8.10	24.00	J-55	447.70	2.5	450.2	
1	Insert Float Valve	8 5/8	8.10	24.00	J-55	0.00	450.2	450.2	
1	Casing Joints	8 5/8	8.10	24.00	J-55	44.77	450.2	495.0	
1	Float Shoe	8 5/8	8.10			0.90	495.0	495.9	
Casing Description Production				Run Date 7/7/2007 12:45		Set Depth (ftKB) 2,094.0		Wellbore Original Hole	
Centralizers 15				Scratchers 5					
Jts	Item Des	OD (in)	ID (in)	Wt (lb/ft)	Grade	Len (ft)	Top (ftKB)	Btm (ftKB)	
28	Casing Joints	5 1/2	4.95	15.50	J-55	1,239.18	-0.5	1,238.7	
1	Liner Pup Joint	5 1/2	4.95			5.50	1,238.7	1,244.2	
1	Stage Collar	5 1/2	4.95			2.30	1,244.2	1,246.5	
1	External Casing Packer	5 1/2	4.95			7.00	1,246.5	1,253.5	
18	Casing Joints	5 1/2	4.95	15.50	J-55	794.82	1,253.5	2,048.4	
1	Insert Float Valve	5 1/2	0.00			0.00	2,048.4	2,048.4	
1	Casing Joints	5 1/2	0.00	15.50	J-55	44.75	2,048.4	2,093.1	
1	Shoe	5 1/2	0.00	14.00	J-55	0.90	2,093.1	2,094.0	
<b>Cement: &lt;Description?&gt;</b>									
Cementing Start Date			Cementing End Date			Wellbore			
Evaluation Method			Cement Evaluation Results						
Comment									
<b>Cement Stage: &lt;Description?&gt;</b>									
Top Depth (ftKB)		Bottom Depth (ftKB)		Full Return?		Vol Cement		Top Plug?	
Initial Pump Rate (bbl/min)		Final Pump Rate (bbl/min)		Avg Pump Rate (bbl/min)		Final Pump Pressure (psi)		Plug Bump Pressure (psi)	
Pipe Reciprocated?		Stroke (ft)		Reciprocation Rate (spm)		Pipe Rotated?		Pipe RPM (rpm)	
Tagged Depth (ftKB)		Tag Method		Depth Plug Drilled Out To		Drill Out Diameter (in)		Drill Out Date	

Well Name: Apache Canyon 05-11

Conductor

API/UWI 05071091320000	Location T34S-R67W-S05	Field Name Purgatoire River	Permit Number 20065935	State/Province Colorado	Well Configuration Type Vertical
Gr Elev (ft) 7,490.00	Casing Flange Elevation (ft)	KB-Ground Distance (ft) 0.00	KB-Casing Flange Distance (ft)	Spud Date 7/5/2007 10:30	Rig Release Date 7/7/2007 16:00



Cement Fluid: <Description?>					
Fluid Type	Fluid Description		Amount (sack)	Class	Volume Pumped (bbl)
Estimated Top (ftKB)	Est Btm (ftKB)	Yield (ft³/sack)	Mix H2O Ratio (gal/sack)	Free Water (%)	
Density (lb/gal)	Plastic Viscosity (cP)		Thickening Time (hr)		1st Compressive Strength (psi)
Cement Fluid Additives					
Add		Type		Conc	