

Inspection Photos

6/23/2021

Operator: LARAMIE ENERGY LLC - 10433

Location ID: 383337

Garfield County, CO

Aaron Trujillo

NW Reclamation Specialist

COGCC

Inspection Photos
Operator Name: LARAMIE ENERGY LLC - 10433
Location ID: 383337

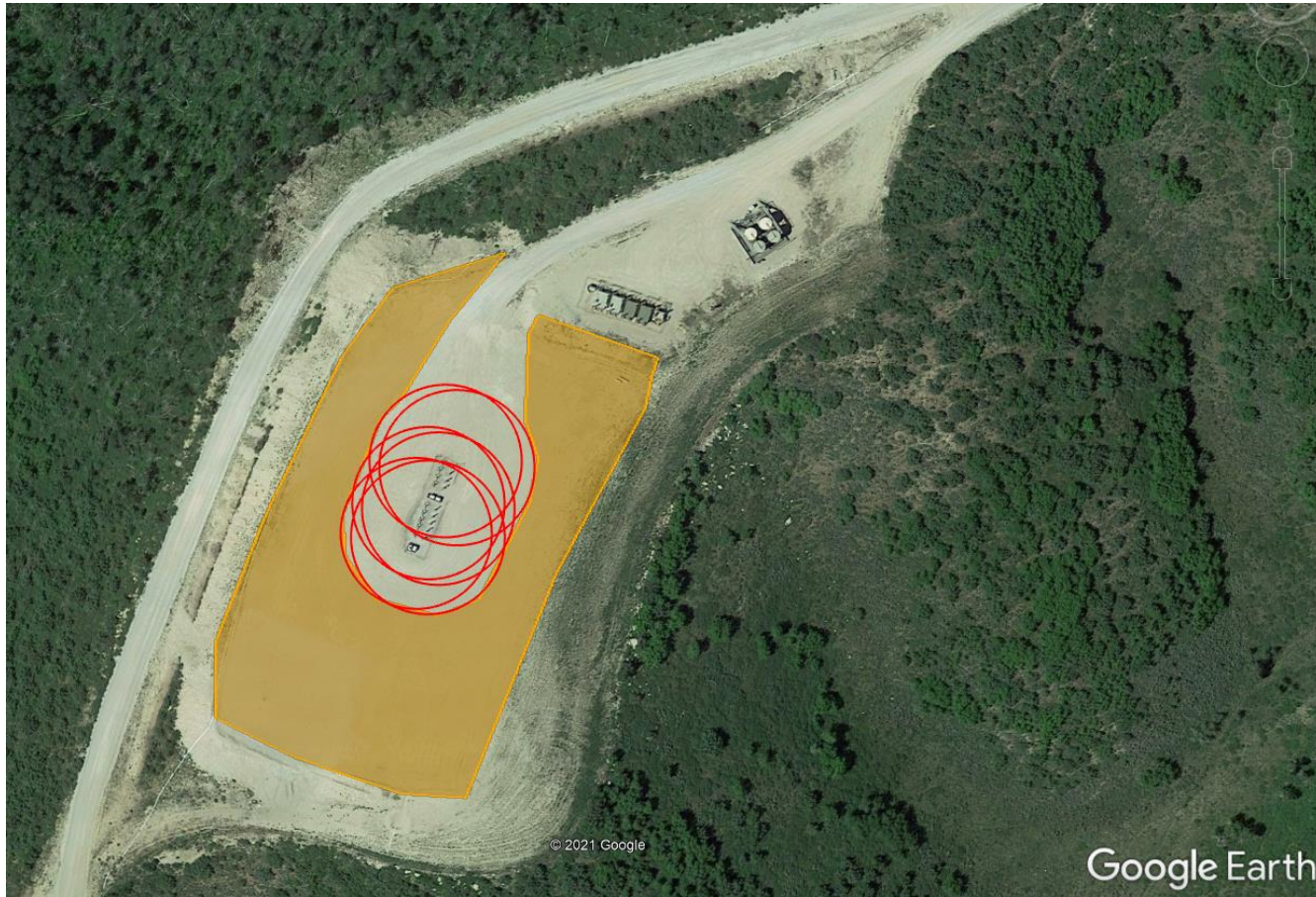


Photo 1: 2016 Google Earth aerial imagery. Orange polygon shows approximate areas of the pad not reasonably needed for production, that have not been recontoured/regraded and reclaimed in accordance with 1003 Rules. Red circles represent a 75 foot buffer around the wells.



Inspection Photos
Operator Name: LARAMIE ENERGY LLC - 10433
Location ID: 383337



Photo 2: Photo taken from the North end of the Location facing southeast. Photos 2-5 provide an overview of the Location from southeast, south, southwest to west. Photos show interim reclamation of areas not needed for production has not been performed in accordance with 1003 Rules and Corrective actions.

Inspection Photos
Operator Name: LARAMIE ENERGY LLC - 10433
Location ID: 383337



Photo 3: See comments under photo 2.



Inspection Photos
Operator Name: LARAMIE ENERGY LLC - 10433
Location ID: 383337



Photo 4: See comments under photo 2. .



Inspection Photos
Operator Name: LARAMIE ENERGY LLC - 10433
Location ID: 383337



Photo 5: See comments under photo 2.



Inspection Photos
Operator Name: LARAMIE ENERGY LLC - 10433
Location ID: 383337



Photo 6: Photo taken from the southwest end of the Location, facing north. Photos 6-8 provide an overview of the Location from north, northeast to east. Photos show interim reclamation of areas not needed for production has not been performed in accordance with 1003 Rules and Corrective actions.



Inspection Photos
Operator Name: LARAMIE ENERGY LLC - 10433
Location ID: 383337



Photo 7: See comments under photo 6.



Inspection Photos
Operator Name: LARAMIE ENERGY LLC - 10433
Location ID: 383337



Photo 8: See comments under photo 6.

Inspection Photos
Operator Name: LARAMIE ENERGY LLC - 10433
Location ID: 383337



Photo 10: Photo taken from the south end of the Location, facing south. Photos shows example of slopes where BMPs remain missing or insufficient/inadequate to protect and stabilize the slopes of the Location.

Inspection Photos
Operator Name: LARAMIE ENERGY LLC - 10433
Location ID: 383337



Photo 11: Photo taken from the south end of the Location, facing west. Photos shows example of slopes where BMPs remain missing or insufficient/inadequate to protect and stabilize the slopes of the Location.

Inspection Photos
Operator Name: LARAMIE ENERGY LLC - 10433
Location ID: 383337



Photo 12: Photo taken from the south end of the Location, facing south. Photos shows example of slopes where BMPs remain missing or insufficient/inadequate to protect and stabilize the slopes of the Location.



Inspection Photos
Operator Name: LARAMIE ENERGY LLC - 10433
Location ID: 383337



Photo 13: Photo taken from the south end of the Location, facing west. Photos shows example of slopes where BMPs remain missing or insufficient/inadequate to protect and stabilize the slopes of the Location.



Inspection Photos
Operator Name: LARAMIE ENERGY LLC - 10433
Location ID: 383337



Photo 14: Photo taken from the southeast end of the Location, facing west. Photos 14-16 provide an overview of the Location from west, northwest to north. Photos show interim reclamation of areas not needed for production has not been performed in accordance with 1003 Rules and Corrective actions.

Inspection Photos
Operator Name: LARAMIE ENERGY LLC - 10433
Location ID: 383337



Photo 15: See comments under photo 14.



Inspection Photos
Operator Name: LARAMIE ENERGY LLC - 10433
Location ID: 383337



Photo 16: See comments under photo 14.

Inspection Photos
Operator Name: LARAMIE ENERGY LLC - 10433
Location ID: 383337



Photo 17: Photo taken from the north end of the Location, facing northeast. Photos shows example of slopes where BMPs remain missing or insufficient/inadequate to protect and stabilize the slopes of the Location.

Inspection Photos
Operator Name: LARAMIE ENERGY LLC - 10433
Location ID: 383337



Photo 18: Photo of the tank battery on the southwest end of the Location. See inspection #701101420 for corrective actions regarding signage.

