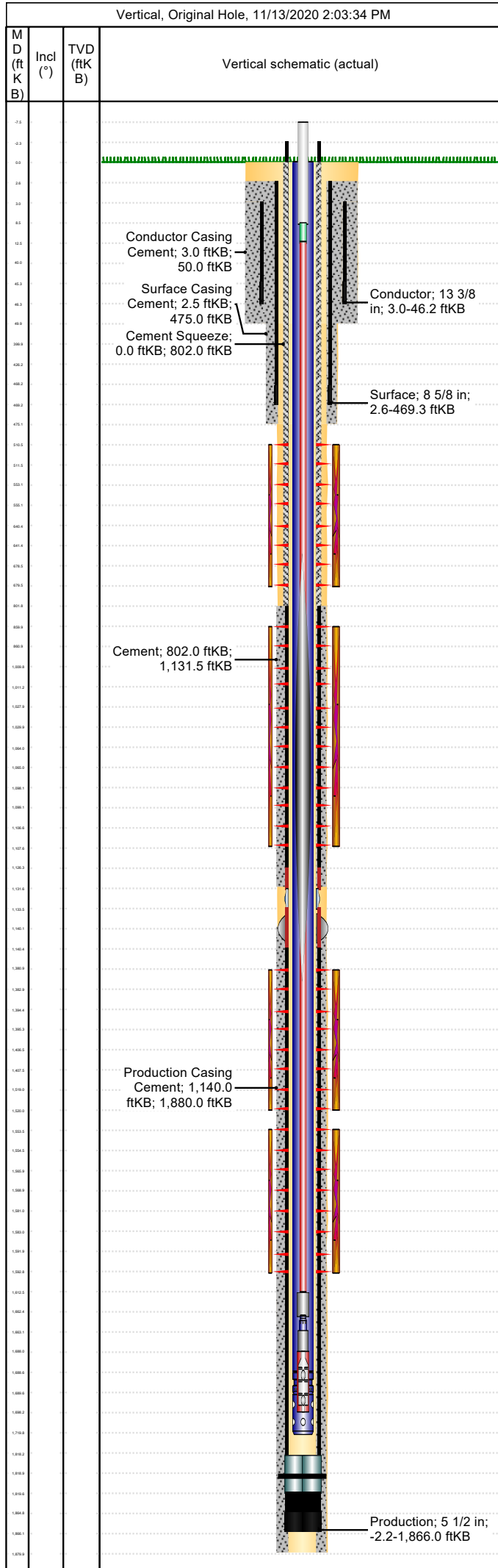


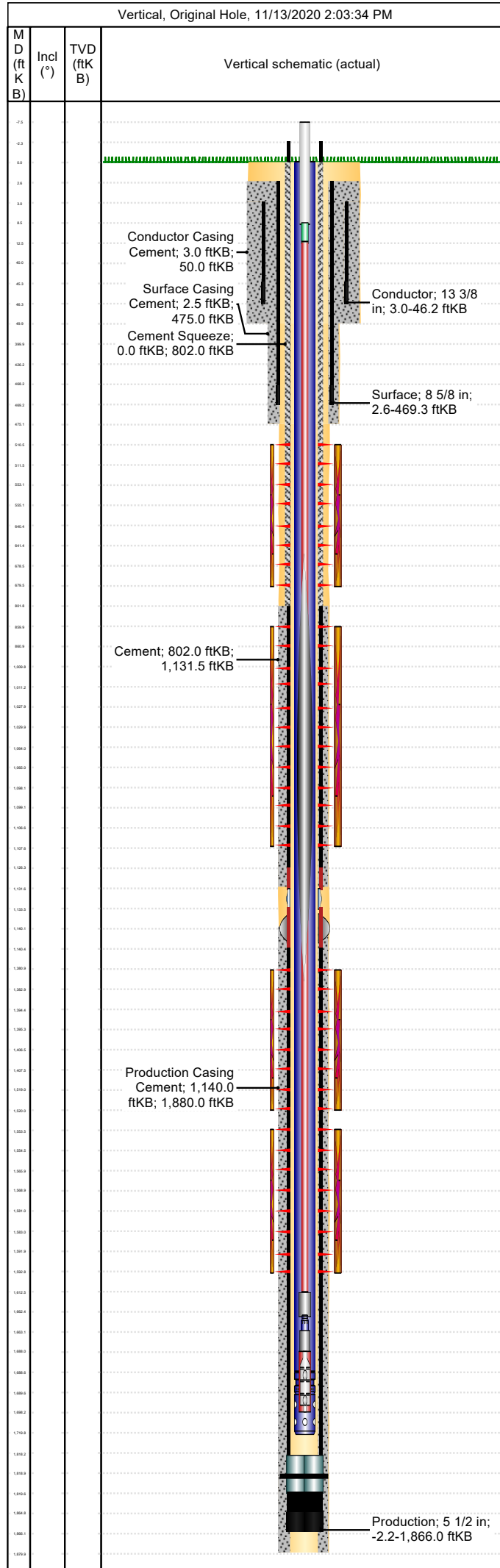
| | | | | | |
|---------------------------|------------------------------|---------------------------------|--------------------------------|------------------------------|-------------------------------------|
| API/UWI 05071095810000 | Location T34S-R67W-S04 | Field Name Purgatoire River | Permit Number 20081056 | State/Province Colorado | Well Configuration Type Vertical |
| Gr Elev (ft) 7,293.00 | Casing Flange Elevation (ft) | KB-Ground Distance (ft) 0.00 | KB-Casing Flange Distance (ft) | Spud Date 7/21/2008 13:00 | Rig Release Date 7/23/2008 19:30 |



| Wellbore | | | | | | | | | |
|---------------------------------------|------------------------|---------------------------|-----------------------------|---------------------------|-----------------------------|--------------------------------|---------------------------|--------------------------|--|
| Wellbore Name | | | Profile Type | | | Vertical Section Direction (°) | | | |
| Section Des | | Size (in) | | Act Top (ftKB) | | Act Btm (ftKB) | | | |
| Kick Offs & Key Depths | | | | | | | | | |
| Type | | Top Depth (ftKB) | | | Depth Top (TVD) (ftKB) | | | | |
| Wellhead | | | | | | | | | |
| Type | | | | | | | | | |
| Des | | Make | | Model | | SN | | WP Top (psi) | |
| Last Mud Check | | | | | | | | | |
| Date | Type | Depth (ftKB) | Dens (lb/gal) | Vis (s/qt) | Gel 10s (lb/100ft²) | Gel 10m (lb/100ft²) | PV (cP) | YP (lb/100ft²) | |
| Casing | | | | | | | | | |
| Casing Description Conductor | | | Run Date 7/21/2008 14:45 | | Set Depth (ftKB) 46.2 | | Wellbore Original Hole | | |
| Centralizers 1 - 13 3/8" x 17 1/2" | | | | | Scratchers | | | | |
| Jts | Item Des | OD (in) | ID (in) | Wt (lb/ft) | Grade | Len (ft) | Top (ftKB) | Btm (ftKB) | |
| 1 | Casing Joints | 13 3/8 | 12.72 | 48.00 | LS | 42.20 | 3.0 | 45.2 | |
| 1 | Guide Shoe | 13 3/8 | 12.72 | 48.00 | J-55 | 1.00 | 45.2 | 46.2 | |
| Casing Description Surface | | | Run Date 7/22/2008 13:00 | | Set Depth (ftKB) 469.3 | | Wellbore Original Hole | | |
| Centralizers 4 - 8 5/8" x 11" | | | | | Scratchers 2 - Turbos | | | | |
| Jts | Item Des | OD (in) | ID (in) | Wt (lb/ft) | Grade | Len (ft) | Top (ftKB) | Btm (ftKB) | |
| 10 | Casing Joints | 8 5/8 | 8.10 | 24.00 | J-55 | 423.60 | 2.6 | 426.2 | |
| 1 | Insert float valve | 8 5/8 | 8.10 | 24.00 | J-55 | 0.00 | 426.2 | 426.2 | |
| 1 | Casing Joints | 8 5/8 | 8.10 | 24.00 | J-55 | 42.15 | 426.2 | 468.3 | |
| 1 | Guide Shoe | 8 5/8 | 8.10 | 24.00 | J-55 | 1.00 | 468.3 | 469.3 | |
| Casing Description Production | | | Run Date 7/23/2008 19:00 | | Set Depth (ftKB) 1,866.0 | | Wellbore Original Hole | | |
| Centralizers | | | | | Scratchers 2 - Turbos | | | | |
| Jts | Item Des | OD (in) | ID (in) | Wt (lb/ft) | Grade | Len (ft) | Top (ftKB) | Btm (ftKB) | |
| 25 | Casing Joints | 5 1/2 | 4.95 | 15.50 | J-55 | 1,128.63 | -2.2 | 1,126.4 | |
| 1 | Casing Pup Joint | 5 1/2 | 4.95 | 15.50 | J-55 | 5.10 | 1,126.4 | 1,131.5 | |
| 1 | Stage Collar | 5 1/2 | 4.95 | 15.50 | J-55 | 2.10 | 1,131.5 | 1,133.6 | |
| 1 | External Casing Packer | 5 1/2 | 4.95 | 15.50 | J-55 | 6.90 | 1,133.6 | 1,140.5 | |
| 15 | Casing Joints | 5 1/2 | 4.95 | 15.50 | J-55 | 677.81 | 1,140.5 | 1,818.3 | |
| 1 | Float Collar | 5 1/2 | 0.00 | 15.50 | J-55 | 1.25 | 1,818.3 | 1,819.6 | |
| 1 | Casing Joints | 5 1/2 | 0.00 | 15.50 | J-55 | 45.16 | 1,819.6 | 1,864.8 | |
| 1 | Float Shoe | 5 1/2 | 0.00 | 15.50 | J-55 | 1.25 | 1,864.8 | 1,866.0 | |
| Cement: <Description?> | | | | | | | | | |
| Cementing Start Date | | | Cementing End Date | | | Wellbore | | | |
| Evaluation Method | | | Cement Evaluation Results | | | | | | |
| Comment | | | | | | | | | |
| Cement Stage: <Description?> | | | | | | | | | |
| Top Depth (ftKB) | | Bottom Depth (ftKB) | | Full Return? | Vol Cement | Top Plug? | | Bottom Plug? | |
| Initial Pump Rate (bbl/min) | | Final Pump Rate (bbl/min) | | Avg Pump Rate (bbl/min) | | Final Pump Pressure (psi) | | Plug Bump Pressure (psi) | |
| Pipe Reciprocated? | | Stroke (ft) | | Reciprocation Rate (spm) | | Pipe Rotated? | | Pipe RPM (rpm) | |
| Tagged Depth (ftKB) | | Tag Method | | Depth Plug Drilled Out To | | Drill Out Diameter (in) | | Drill Out Date | |

Well Name: Apache Canyon 04-11

| | | | | | |
|---------------------------|------------------------------|---------------------------------|--------------------------------|------------------------------|-------------------------------------|
| API/UWI 05071095810000 | Location T34S-R67W-S04 | Field Name Purgatoire River | Permit Number 20081056 | State/Province Colorado | Well Configuration Type Vertical |
| Gr Elev (ft) 7,293.00 | Casing Flange Elevation (ft) | KB-Ground Distance (ft) 0.00 | KB-Casing Flange Distance (ft) | Spud Date 7/21/2008 13:00 | Rig Release Date 7/23/2008 19:30 |



Cement Fluid: <Description?>

| | | | | |
|----------------------|------------------------|----------------------|--------------------------------|---------------------|
| Fluid Type | Fluid Description | Amount (sack) | Class | Volume Pumped (bbl) |
| Estimated Top (ftKB) | Est Btm (ftKB) | Yield (ft³/sack) | Mix H2O Ratio (gal/sack) | Free Water (%) |
| Density (lb/gal) | Plastic Viscosity (cP) | Thickening Time (hr) | 1st Compressive Strength (psi) | |

Cement Fluid Additives

| Add | Type | Conc |
|-----|------|------|
| | | |