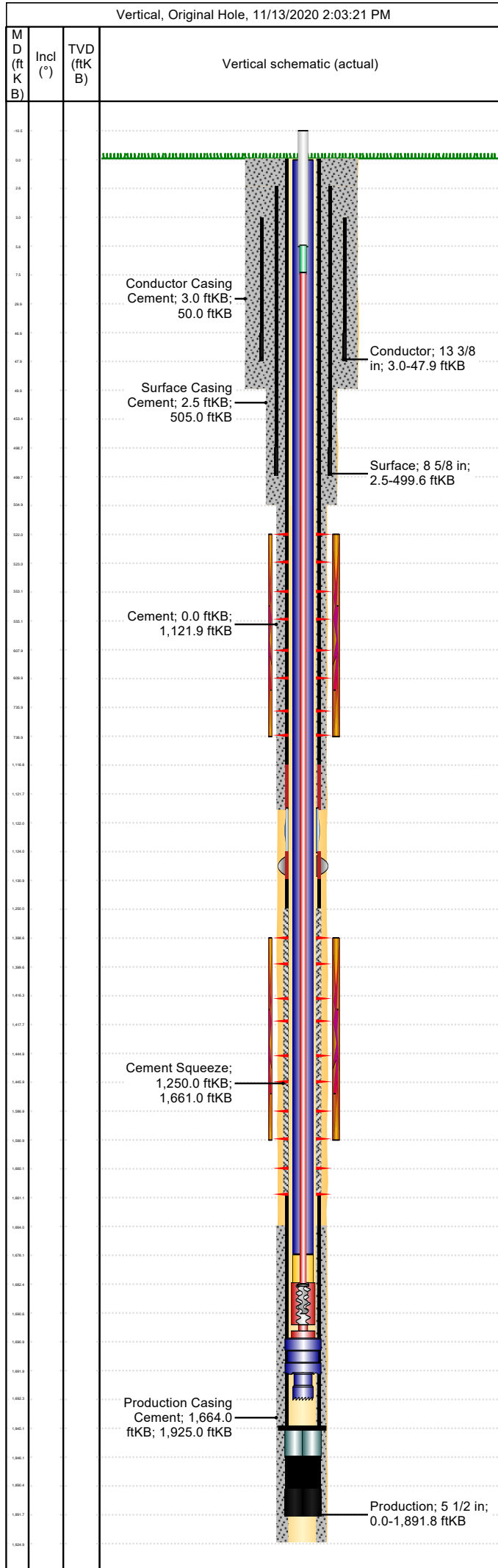


Well Name: Apache Canyon 04-02

Conductor

API/UWI 05071096340000	Location T34S-R67W-S04	Field Name Purgatoire River	Permit Number 20083504	State/Province Colorado	Well Configuration Type Vertical
Gr Elev (ft) 7,323.00	Casing Flange Elevation (ft)	KB-Ground Distance (ft) 0.00	KB-Casing Flange Distance (ft)	Spud Date 8/14/2008 06:00	Rig Release Date 8/17/2008 00:30

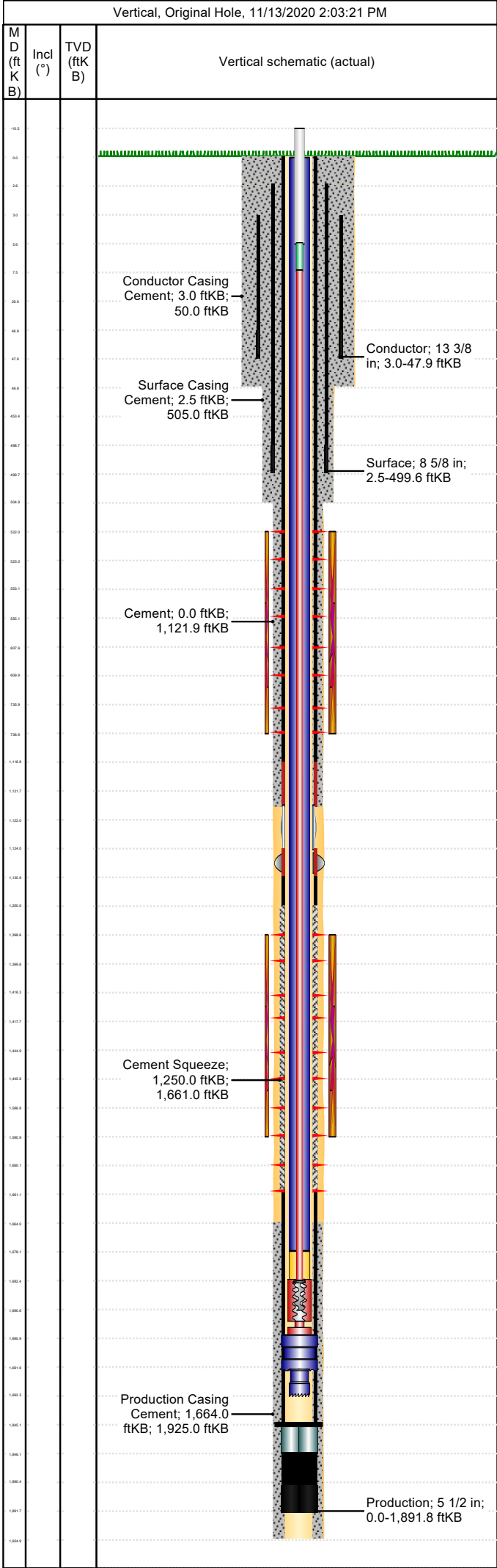


Wellbore									
Wellbore Name			Profile Type			Vertical Section Direction (°)			
Section Des		Size (in)		Act Top (ftKB)		Act Btm (ftKB)			
Kick Offs & Key Depths									
Type		Top Depth (ftKB)			Depth Top (TVD) (ftKB)				
Wellhead									
Type									
Des		Make		Model		SN		WP Top (psi)	
Last Mud Check									
Date	Type	Depth (ftKB)	Dens (lb/gal)	Vis (s/qt)	Gel 10s (lb/100ft²)	Gel 10m (lb/100ft²)	PV (cP)	YP (lb/100ft²)	
Casing									
Casing Description Conductor			Run Date 8/14/2008 08:00		Set Depth (ftKB) 47.9		Wellbore Original Hole		
Centralizers 1 - 13 3/8" x 17 1/2					Scratchers				
Jts	Item Des	OD (in)	ID (in)	Wt (lb/ft)	Grade	Len (ft)	Top (ftKB)	Btm (ftKB)	
1	Casing Joints	13 3/8	12.72	48.00	LS	43.85	3.0	46.9	
1	Guide Shoe	13 3/8	12.72	48.00	J-55	1.00	46.9	47.9	
Casing Description Surface			Run Date 8/15/2008 14:30		Set Depth (ftKB) 499.6		Wellbore Original Hole		
Centralizers 4 - 8 5/8" x 11"					Scratchers 2 - Turbos				
Jts	Item Des	OD (in)	ID (in)	Wt (lb/ft)	Grade	Len (ft)	Top (ftKB)	Btm (ftKB)	
10	Casing Joints	8 5/8	8.10	24.00	J-55	450.99	2.5	453.5	
1	Insert float valve	8 5/8	8.10	24.00	J-55	0.00	453.5	453.5	
1	Casing Joints	8 5/8	8.10	24.00	J-55	45.12	453.5	498.6	
1	Guide Shoe	8 5/8	8.10	24.00	J-55	1.00	498.6	499.6	
Casing Description Production			Run Date 8/17/2008 00:00		Set Depth (ftKB) 1,891.8		Wellbore Original Hole		
Centralizers 10 - 5 1/2" x 7 b7/8"					Scratchers 2 - Turbos				
Jts	Item Des	OD (in)	ID (in)	Wt (lb/ft)	Grade	Len (ft)	Top (ftKB)	Btm (ftKB)	
25	Casing Joints	5 1/2	4.95	15.50	J-55	1,116.77	0.0	1,116.8	
1	Casing Pup Joint	5 1/2	4.95	15.50	J-55	5.10	1,116.8	1,121.9	
1	Stage Collar	5 1/2	4.95	15.50	J-55	2.15	1,121.9	1,124.0	
1	External Casing Packer	5 1/2	4.95	15.50	J-55	7.00	1,124.0	1,131.0	
16	Casing Joints	5 1/2	4.95	15.50	J-55	713.98	1,131.0	1,845.0	
1	Float Collar	5 1/2	0.00	15.50	J-55	1.25	1,845.0	1,846.3	
1	Casing Joints	5 1/2	0.00	15.50	J-55	44.30	1,846.3	1,890.6	
1	Float Shoe	5 1/2	0.00	15.50	J-55	1.25	1,890.6	1,891.8	
Cement: <Description?>									
Cementing Start Date			Cementing End Date			Wellbore			
Evaluation Method			Cement Evaluation Results						
Comment									
Cement Stage: <Description?>									
Top Depth (ftKB)		Bottom Depth (ftKB)		Full Return?		Vol Cement		Top Plug?	
Initial Pump Rate (bbl/min)		Final Pump Rate (bbl/min)		Avg Pump Rate (bbl/min)		Final Pump Pressure (psi)		Plug Bump Pressure (psi)	
Pipe Reciprocated?		Stroke (ft)		Reciprocation Rate (spm)		Pipe Rotated?		Pipe RPM (rpm)	
Tagged Depth (ftKB)		Tag Method		Depth Plug Drilled Out To		Drill Out Diameter (in)		Drill Out Date	

Well Name: Apache Canyon 04-02

Conductor

API/UWI 05071096340000	Location T34S-R67W-S04	Field Name Purgatoire River	Permit Number 20083504	State/Province Colorado	Well Configuration Type Vertical
Gr Elev (ft) 7,323.00	Casing Flange Elevation (ft)	KB-Ground Distance (ft) 0.00	KB-Casing Flange Distance (ft)	Spud Date 8/14/2008 06:00	Rig Release Date 8/17/2008 00:30



Cement Fluid: <Description?>				
Fluid Type	Fluid Description		Amount (sack)	Class
Estimated Top (ftKB)	Est Btm (ftKB)	Yield (ft³/sack)	Mix H2O Ratio (gal/sack)	Free Water (%)
Density (lb/gal)		Plastic Viscosity (cP)	Thickening Time (hr)	1st Compressive Strength (psi)
Cement Fluid Additives				
Add		Type		Conc