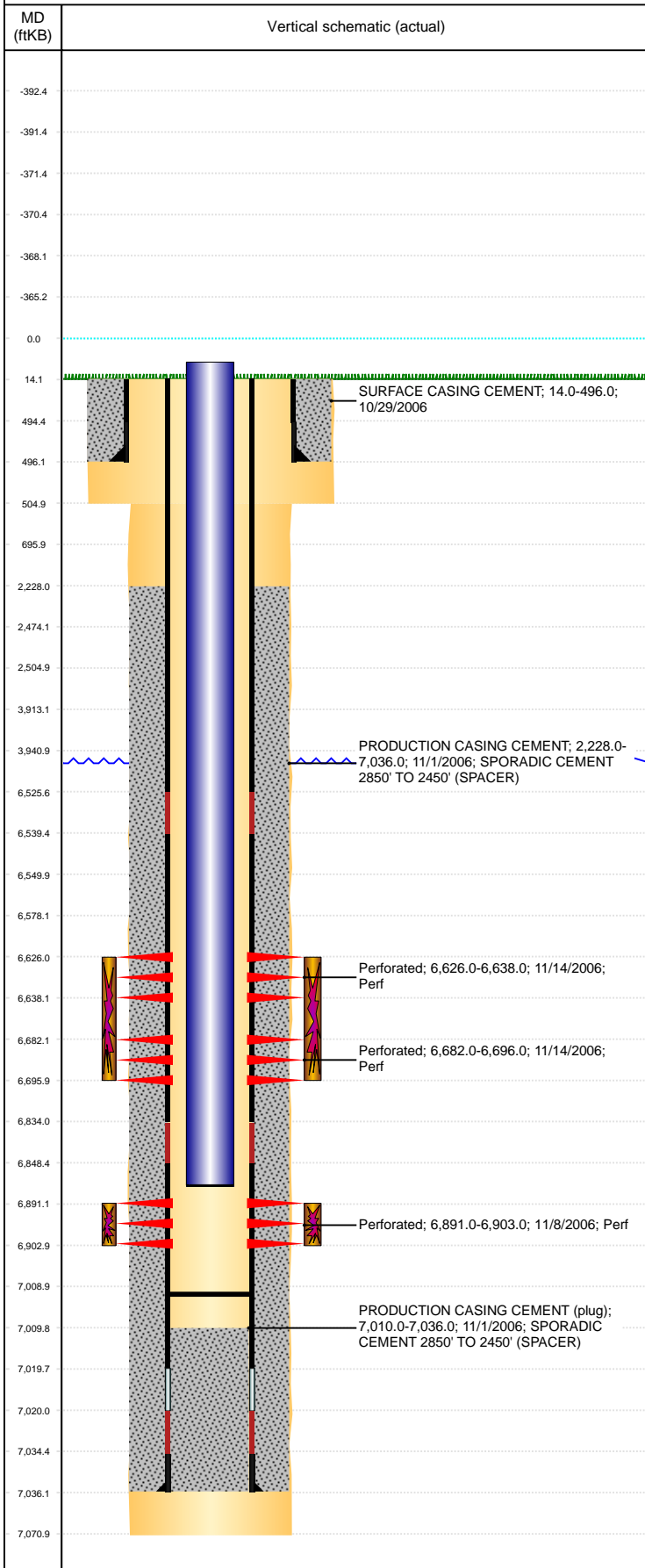


Well Name: KARCH D04-17

VERTICAL, ORIGINAL HOLE, 6/23/2021 10:43:17 AM



Well Header										
API 05-123-27306		Business Unit DJ BASIN			District 15		Well Config VERTICAL			
KB - GL / MSL (ft... 14.00		Spud Date 10/28/2006		P & A Date		Well Production Status TA (AT SURFACE)			SoRT No	
Comment ORIGINAL VALIDATION: MISSING WELL FILE; USED INFO FROM STATES AND VANGE REPORTS. STATE SHOWS SHUT IN SINCE JUL 2016.										
Surface Location (Congressional)										
Qtr 3 SW	Qtr 4 NE	Section 4	Twnshp 3	Twnsh... N	Range 64	Rng E/... W	Actual Latitude (°) 40.25789085	Actual Longitude (°) -104.55131364		
Wellbore Sections										
Section Des			Size (in)			Act Top, MD (ftKB)		Act Btm, MD (ftKB)		
SURFACE			12 1/4			14		505		
PRODUCTION			7 7/8			505		7,071		
Casing Strings										
Csg Des			Run Date		OD (in)	Wt/Len (lb/ft)	Grade	Top, MD (ftKB)	MD (ftKB)	
Surface			10/29/2006		8 5/8	24.00	?	14.0	496.0	
Production			11/1/2006		4 1/2	11.60	M-80	14.0	7,036.0	
Cement										
Des					Start Date		Top (ftKB)		Btm (ftKB)	
SURFACE CASING CEMENT					10/29/2006		14.0		496.0	
PRODUCTION CASING CEMENT					11/1/2006		2,228.0		7,036.0	
Zone Statuses										
Zone Name		Status Date		Status	Fluid Type	Job			Prod Method	
CODELL		11/16/2006		PR	Water Water	DRILLING/COMPLETION - ORIGINAL, 10/28/200...			Flowing Flowing	
CODELL		9/30/2009		PR						
NIOBRARA		9/30/2009		PR						
NIOBRARA		10/27/2016		SI						
Perforation Data										
Linked Zone			Bnch/Stg	Entered Shot Total	Top (ftKB)		Btm (ftKB)		Date	
NIOBRARA, ORIGINAL HOLE			A	72	6,626.00		6,638.00		11/14/2006	
NIOBRARA, ORIGINAL HOLE			B	84	6,682.00		6,696.00		11/14/2006	
CODELL, ORIGINAL HOLE				48	6,891.00		6,903.00		11/8/2006	
Stimulation Intervals										
Zone					Start Date		Top (ftKB)		Btm (ftKB)	
NIOBRARA, ORIGINAL HOLE					11/14/2006		6,626.0		6,696.0	
CODELL, ORIGINAL HOLE					11/14/2006		6,891.0		6,903.0	
Other In Hole										
Run Date		Des				Make		OD (in)	Top (ftKB)	Btm (ftKB)
Logs										
Date		Type					Top, MD (ftKB)		Btm, MD (ftKB)	
10/31/2006		COMPENSATED DENSITY					2,900.0		7,051.0	
10/31/2006		INDUCTION					496.0		7,071.0	
11/7/2006		CBL/CCL/GR					2,051.0		7,008.0	
8/21/2018		GYRO					14.0		6,800.0	
Plug Back Total Depths										
Date		Type			Com					Depth (ftKB)
11/7/2006		FILL			DEPTH LOGGER ON CBL					7,010.0
6/4/2007		FILL			CLEAN OUT TO LAND TUBING					7,009.0