

Project: Garfield County, CO
 Site: NPM G35 496 Pad
 Well: BJU G35 FED 14C-35 496
 Wellbore: Wellbore #1
 Design: Design #2
 Latitude: 39.660333
 Longitude: -108.133988
 Ground Level: 8164.0
 RKB @ 8194.0usft (H&P#329)

FORMATION TOP DETAILS			
TVDPATH	MDPATH	FORMATION	
2470.0	2573.3	Wasatch	
5470.0	5740.2	Wasatch G	
5795.0	6083.3	Fort Union	
7798.0	8174.7	Ohio Creek	
7798.0	8174.7	TOG	
8043.0	8419.8	Williams Fork	
10757.0	11134.8	Cameo	
11359.0	11737.0	Rollins	

REFERENCE INFORMATION

Co-ordinate (N/E) Reference: Well BJU G35 FED 14C-35 496 - Slot 14C-35, True North
 Vertical (TVD) Reference: RKB @ 8194.0usft (H&P#329)
 Section (VS) Reference: Slot - 14C-35(0.0N, 0.0E)
 Measured Depth Reference: RKB @ 8194.0usft (H&P#329)
 Calculation Method: Minimum Curvature

WELL DETAILS: BJU G35 FED 14C-35 496

+N/-S	+E/-W	Northing	Easting	Latitude	Longitude	
0.0	0.0	14415246.40	2447092.90	39.660333	-108.133988	14C-35

PROJECT DETAILS: Garfield County, CO

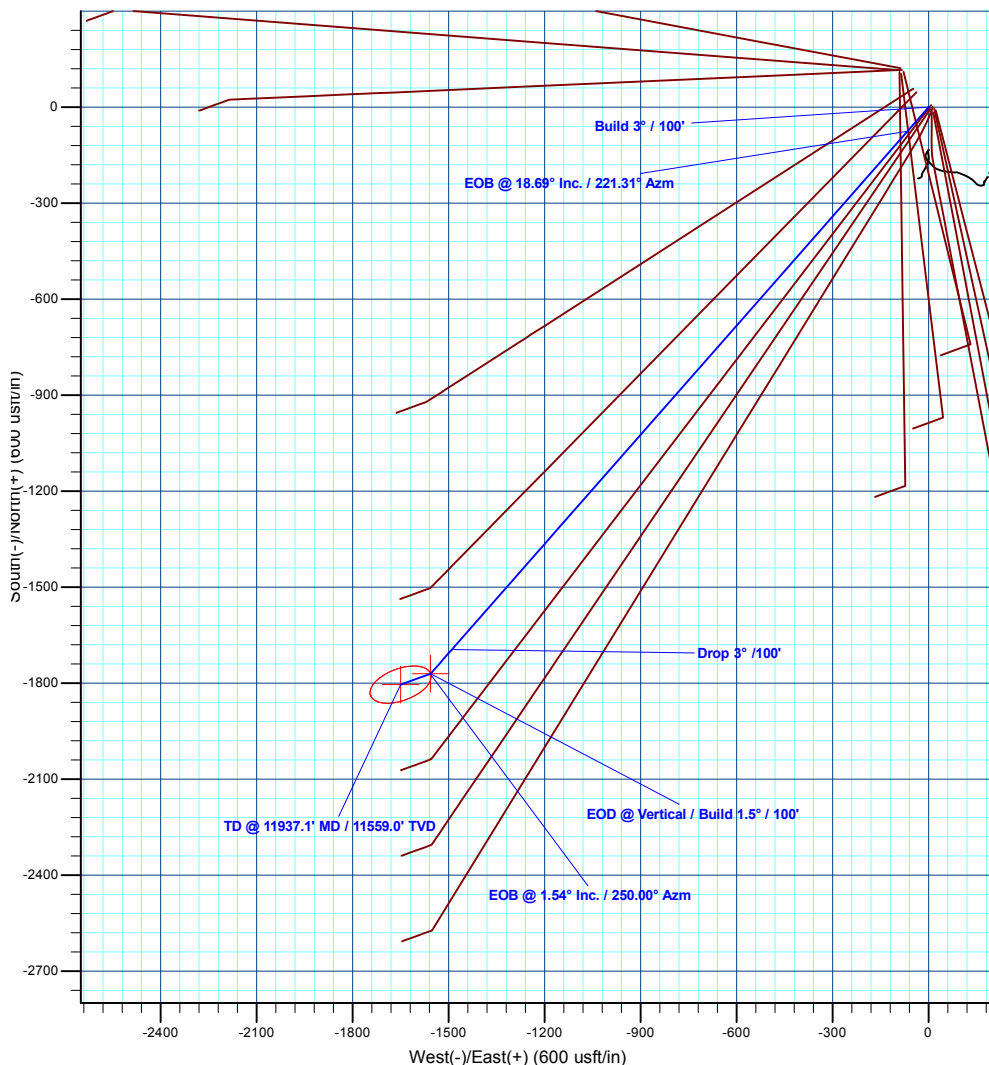
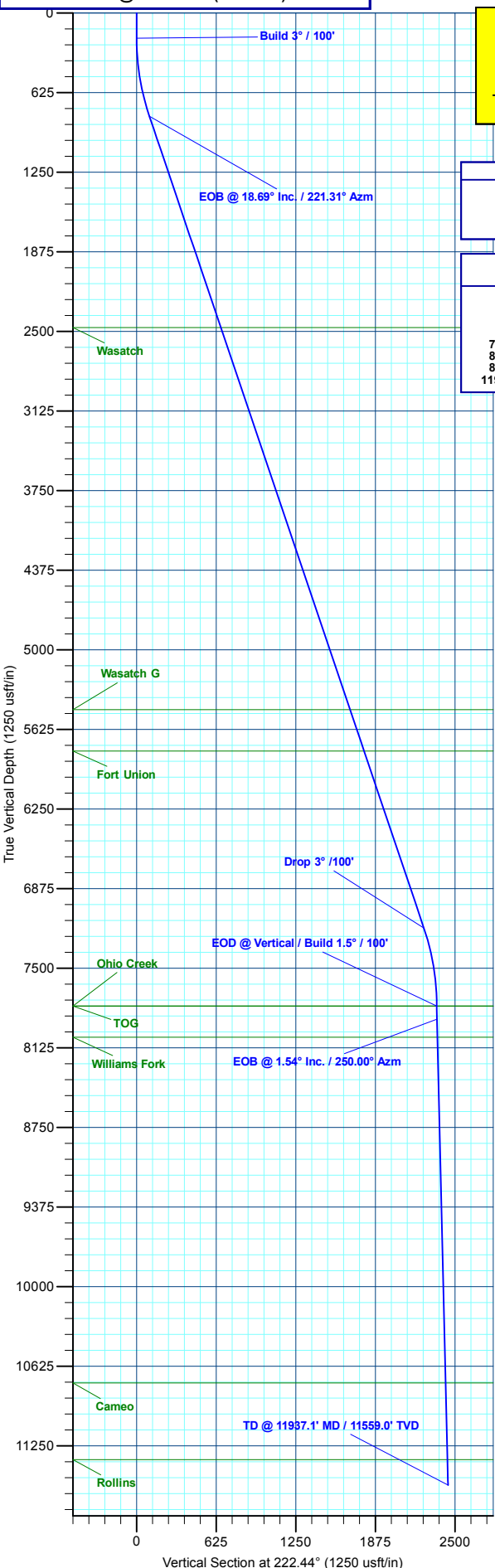
Geodetic System: Universal Transverse Mercator (US Survey Feet)
 Datum: NAD 1927 - Western US
 Ellipsoid: Clarke 1866
 Zone: Zone 12N (114 W to 108 W)
 System Datum: Mean Sea Level

DESIGN TARGET DETAILS

Name	TVD	+N/-S	+E/-W	Northing	Easting	Latitude	Longitude
14C-35 - OHCR	7798.0	-1770.6	-1556.3	14413426.99	2445593.93	39.655474	-108.139513
14C-35 - PBHL	11559.0	-1804.8	-1650.3	14413389.80	2445501.10	39.655380	-108.139847

SECTION DETAILS

MD	Inc	Azi	TVD	+N/-S	+E/-W	Dleg	TFace	VSec	Annotation
0.0	0.00	0.00	0.0	0.0	0.0	0.00	0.00	0.0	Build 3° / 100'
200.0	0.00	0.00	200.0	0.0	0.0	0.00	0.00	0.0	EOB @ 18.69° Inc. / 221.31° Azm
822.9	18.69	221.31	811.9	-75.6	-66.5	3.00	221.31	100.7	Drop 3° / 100'
7551.8	18.69	221.31	7186.1	-1695.0	-1489.8	0.00	0.00	2256.2	EOB @ Vertical / Build 1.5° / 100'
8174.7	0.00	0.00	7798.0	-1770.6	-1556.3	3.00	180.00	2356.9	EOB @ 1.54° Inc. / 250.00° Azm
8277.7	1.54	250.00	7900.9	-1771.1	-1557.6	1.50	250.00	2358.1	EOB @ 1.54° Inc. / 250.00° Azm
11937.1	1.54	250.00	11559.0	-1804.8	-1650.3	0.00	0.00	2445.6	TD @ 11937.1' MD / 11559.0' TVD



Plan: Design #2 (BJU G35 FED 14C-35 496/Wellbore #1)

Created By: Will Jircik Date: 12:12, June 07 2021



Caerus Oil & Gas

Garfield County, CO

NPM G35 496 Pad

BJU G35 FED 14C-35 496 - Slot 14C-35

Wellbore #1

Plan: Design #2

KLX Well Planning Report

07 June, 2021



Database:	EDM 5000.1 Single User Db	Local Co-ordinate Reference:	Well BJU G35 FED 14C-35 496 - Slot 14C-35
Company:	Caerus Oil & Gas	TVD Reference:	RKB @ 8194.0usft (H&P#329)
Project:	Garfield County, CO	MD Reference:	RKB @ 8194.0usft (H&P#329)
Site:	NPM G35 496 Pad	North Reference:	True
Well:	BJU G35 FED 14C-35 496	Survey Calculation Method:	Minimum Curvature
Wellbore:	Wellbore #1		
Design:	Design #2		

Project	Garfield County, CO		
Map System:	Universal Transverse Mercator (US Survey Fee	System Datum:	Mean Sea Level
Geo Datum:	NAD 1927 - Western US		
Map Zone:	Zone 12N (114 W to 108 W)		

Site		NPM G35 496 Pad			
Site Position:		Northing:	14,415,365.20 usft	Latitude:	39.660667
From:	Map	Easting:	2,447,000.80 usft	Longitude:	-108.134301
Position Uncertainty:	0.0 usft	Slot Radius:	13-3/16 "	Grid Convergence:	1.83 °

Well	BJU G35 FED 14C-35 496 - Slot 14C-35					
Well Position	+N/-S	-121.7 usft	Northing:	14,415,246.40 usft	Latitude:	39.660333
	+E/-W	88.3 usft	Easting:	2,447,092.90 usft	Longitude:	-108.133988
Position Uncertainty	0.0 usft		Wellhead Elevation:		Ground Level:	8,164.0 usft

Wellbore	Wellbore #1				
Magnetics	Model Name	Sample Date	Declination (°)	Dip Angle (°)	Field Strength (nT)
	HDGM2020	12/11/2019	9.48	65.85	51,253.00000000

Design	Design #2				
Audit Notes:					
Version:	Phase:	PLAN	Tie On Depth:	0.0	
Vertical Section:	Depth From (TVD) (usft)	+N/-S (usft)	+E/-W (usft)	Direction (°)	
	0.0	0.0	0.0	222.44	

Plan Sections										
Measured Depth (usft)	Inclination (°)	Azimuth (°)	Vertical Depth (usft)	+N/-S (usft)	+E/-W (usft)	Dogleg Rate (°/100usft)	Build Rate (°/100usft)	Turn Rate (°/100usft)	TFO (°)	Target
0.0	0.00	0.00	0.0	0.0	0.0	0.00	0.00	0.00	0.00	
200.0	0.00	0.00	200.0	0.0	0.0	0.00	0.00	0.00	0.00	
822.9	18.69	221.31	811.9	-75.6	-66.5	3.00	3.00	0.00	221.31	
7,551.8	18.69	221.31	7,186.1	-1,695.0	-1,489.8	0.00	0.00	0.00	0.00	
8,174.7	0.00	0.00	7,798.0	-1,770.6	-1,556.3	3.00	-3.00	0.00	180.00	14C-35 - OHCR
8,277.7	1.54	250.00	7,900.9	-1,771.1	-1,557.6	1.50	1.50	-106.85	250.00	
11,937.1	1.54	250.00	11,559.0	-1,804.8	-1,650.3	0.00	0.00	0.00	0.00	14C-35 - PBHL

Database:	EDM 5000.1 Single User Db	Local Co-ordinate Reference:	Well BJU G35 FED 14C-35 496 - Slot 14C-35
Company:	Caerus Oil & Gas	TVD Reference:	RKB @ 8194.0usft (H&P#329)
Project:	Garfield County, CO	MD Reference:	RKB @ 8194.0usft (H&P#329)
Site:	NPM G35 496 Pad	North Reference:	True
Well:	BJU G35 FED 14C-35 496	Survey Calculation Method:	Minimum Curvature
Wellbore:	Wellbore #1		
Design:	Design #2		

Planned Survey									
Measured Depth (usft)	Inclination (°)	Azimuth (°)	Vertical Depth (usft)	+N/-S (usft)	+E/-W (usft)	Vertical Section (usft)	Dogleg Rate (°/100usft)	Build Rate (°/100usft)	Turn Rate (°/100usft)
0.0	0.00	0.00	0.0	0.0	0.0	0.0	0.00	0.00	0.00
100.0	0.00	0.00	100.0	0.0	0.0	0.0	0.00	0.00	0.00
Build 3° / 100'									
200.0	0.00	0.00	200.0	0.0	0.0	0.0	0.00	0.00	0.00
300.0	3.00	221.31	300.0	-2.0	-1.7	2.6	3.00	3.00	0.00
400.0	6.00	221.31	399.6	-7.9	-6.9	10.5	3.00	3.00	0.00
500.0	9.00	221.31	498.8	-17.7	-15.5	23.5	3.00	3.00	0.00
600.0	12.00	221.31	597.1	-31.3	-27.6	41.7	3.00	3.00	0.00
700.0	15.00	221.31	694.3	-48.9	-43.0	65.1	3.00	3.00	0.00
800.0	18.00	221.31	790.2	-70.2	-61.7	93.5	3.00	3.00	0.00
EOB @ 18.69° Inc. / 221.31° Azm									
822.9	18.69	221.31	811.9	-75.6	-66.5	100.7	3.00	3.00	0.00
900.0	18.69	221.31	885.0	-94.2	-82.8	125.4	0.00	0.00	0.00
1,000.0	18.69	221.31	979.7	-118.2	-103.9	157.4	0.00	0.00	0.00
1,100.0	18.69	221.31	1,074.4	-142.3	-125.1	189.4	0.00	0.00	0.00
1,200.0	18.69	221.31	1,169.1	-166.4	-146.2	221.5	0.00	0.00	0.00
1,300.0	18.69	221.31	1,263.9	-190.4	-167.4	253.5	0.00	0.00	0.00
1,400.0	18.69	221.31	1,358.6	-214.5	-188.5	285.5	0.00	0.00	0.00
1,500.0	18.69	221.31	1,453.3	-238.6	-209.7	317.6	0.00	0.00	0.00
1,600.0	18.69	221.31	1,548.0	-262.6	-230.9	349.6	0.00	0.00	0.00
1,700.0	18.69	221.31	1,642.8	-286.7	-252.0	381.6	0.00	0.00	0.00
1,800.0	18.69	221.31	1,737.5	-310.8	-273.2	413.7	0.00	0.00	0.00
1,900.0	18.69	221.31	1,832.2	-334.8	-294.3	445.7	0.00	0.00	0.00
2,000.0	18.69	221.31	1,927.0	-358.9	-315.5	477.7	0.00	0.00	0.00
2,100.0	18.69	221.31	2,021.7	-383.0	-336.6	509.8	0.00	0.00	0.00
2,200.0	18.69	221.31	2,116.4	-407.0	-357.8	541.8	0.00	0.00	0.00
2,300.0	18.69	221.31	2,211.1	-431.1	-378.9	573.8	0.00	0.00	0.00
2,400.0	18.69	221.31	2,305.9	-455.2	-400.1	605.9	0.00	0.00	0.00
2,500.0	18.69	221.31	2,400.6	-479.2	-421.2	637.9	0.00	0.00	0.00
Wasatch									
2,573.3	18.69	221.31	2,470.0	-496.9	-436.7	661.4	0.00	0.00	0.00
2,600.0	18.69	221.31	2,495.3	-503.3	-442.4	670.0	0.00	0.00	0.00
2,700.0	18.69	221.31	2,590.1	-527.4	-463.5	702.0	0.00	0.00	0.00
2,800.0	18.69	221.31	2,684.8	-551.4	-484.7	734.0	0.00	0.00	0.00
2,900.0	18.69	221.31	2,779.5	-575.5	-505.8	766.1	0.00	0.00	0.00
3,000.0	18.69	221.31	2,874.2	-599.6	-527.0	798.1	0.00	0.00	0.00
3,100.0	18.69	221.31	2,969.0	-623.6	-548.1	830.1	0.00	0.00	0.00
3,200.0	18.69	221.31	3,063.7	-647.7	-569.3	862.2	0.00	0.00	0.00
3,300.0	18.69	221.31	3,158.4	-671.8	-590.5	894.2	0.00	0.00	0.00
3,400.0	18.69	221.31	3,253.1	-695.8	-611.6	926.2	0.00	0.00	0.00
3,500.0	18.69	221.31	3,347.9	-719.9	-632.8	958.3	0.00	0.00	0.00
3,600.0	18.69	221.31	3,442.6	-744.0	-653.9	990.3	0.00	0.00	0.00
3,700.0	18.69	221.31	3,537.3	-768.0	-675.1	1,022.3	0.00	0.00	0.00
3,800.0	18.69	221.31	3,632.1	-792.1	-696.2	1,054.4	0.00	0.00	0.00
3,900.0	18.69	221.31	3,726.8	-816.1	-717.4	1,086.4	0.00	0.00	0.00
4,000.0	18.69	221.31	3,821.5	-840.2	-738.5	1,118.4	0.00	0.00	0.00
4,100.0	18.69	221.31	3,916.2	-864.3	-759.7	1,150.5	0.00	0.00	0.00
4,200.0	18.69	221.31	4,011.0	-888.3	-780.8	1,182.5	0.00	0.00	0.00
4,300.0	18.69	221.31	4,105.7	-912.4	-802.0	1,214.5	0.00	0.00	0.00
4,400.0	18.69	221.31	4,200.4	-936.5	-823.1	1,246.6	0.00	0.00	0.00
4,500.0	18.69	221.31	4,295.2	-960.5	-844.3	1,278.6	0.00	0.00	0.00
4,600.0	18.69	221.31	4,389.9	-984.6	-865.4	1,310.6	0.00	0.00	0.00
4,700.0	18.69	221.31	4,484.6	-1,008.7	-886.6	1,342.7	0.00	0.00	0.00

Database:	EDM 5000.1 Single User Db	Local Co-ordinate Reference:	Well BJU G35 FED 14C-35 496 - Slot 14C-35
Company:	Caerus Oil & Gas	TVD Reference:	RKB @ 8194.0usft (H&P#329)
Project:	Garfield County, CO	MD Reference:	RKB @ 8194.0usft (H&P#329)
Site:	NPM G35 496 Pad	North Reference:	True
Well:	BJU G35 FED 14C-35 496	Survey Calculation Method:	Minimum Curvature
Wellbore:	Wellbore #1		
Design:	Design #2		

Planned Survey									
Measured Depth (usft)	Inclination (°)	Azimuth (°)	Vertical Depth (usft)	+N/-S (usft)	+E/-W (usft)	Vertical Section (usft)	Dogleg Rate (°/100usft)	Build Rate (°/100usft)	Turn Rate (°/100usft)
4,800.0	18.69	221.31	4,579.3	-1,032.7	-907.7	1,374.7	0.00	0.00	0.00
4,900.0	18.69	221.31	4,674.1	-1,056.8	-928.9	1,406.7	0.00	0.00	0.00
5,000.0	18.69	221.31	4,768.8	-1,080.9	-950.1	1,438.8	0.00	0.00	0.00
5,100.0	18.69	221.31	4,863.5	-1,104.9	-971.2	1,470.8	0.00	0.00	0.00
5,200.0	18.69	221.31	4,958.3	-1,129.0	-992.4	1,502.9	0.00	0.00	0.00
5,300.0	18.69	221.31	5,053.0	-1,153.1	-1,013.5	1,534.9	0.00	0.00	0.00
5,400.0	18.69	221.31	5,147.7	-1,177.1	-1,034.7	1,566.9	0.00	0.00	0.00
5,500.0	18.69	221.31	5,242.4	-1,201.2	-1,055.8	1,599.0	0.00	0.00	0.00
5,600.0	18.69	221.31	5,337.2	-1,225.3	-1,077.0	1,631.0	0.00	0.00	0.00
5,700.0	18.69	221.31	5,431.9	-1,249.3	-1,098.1	1,663.0	0.00	0.00	0.00
Wasatch G									
5,740.2	18.69	221.31	5,470.0	-1,259.0	-1,106.6	1,675.9	0.00	0.00	0.00
5,800.0	18.69	221.31	5,526.6	-1,273.4	-1,119.3	1,695.1	0.00	0.00	0.00
5,900.0	18.69	221.31	5,621.3	-1,297.5	-1,140.4	1,727.1	0.00	0.00	0.00
6,000.0	18.69	221.31	5,716.1	-1,321.5	-1,161.6	1,759.1	0.00	0.00	0.00
Fort Union									
6,083.3	18.69	221.31	5,795.0	-1,341.6	-1,179.2	1,785.8	0.00	0.00	0.00
6,100.0	18.69	221.31	5,810.8	-1,345.6	-1,182.7	1,791.2	0.00	0.00	0.00
6,200.0	18.69	221.31	5,905.5	-1,369.7	-1,203.9	1,823.2	0.00	0.00	0.00
6,300.0	18.69	221.31	6,000.3	-1,393.7	-1,225.0	1,855.2	0.00	0.00	0.00
6,400.0	18.69	221.31	6,095.0	-1,417.8	-1,246.2	1,887.3	0.00	0.00	0.00
6,500.0	18.69	221.31	6,189.7	-1,441.9	-1,267.4	1,919.3	0.00	0.00	0.00
6,600.0	18.69	221.31	6,284.4	-1,465.9	-1,288.5	1,951.3	0.00	0.00	0.00
6,700.0	18.69	221.31	6,379.2	-1,490.0	-1,309.7	1,983.4	0.00	0.00	0.00
6,800.0	18.69	221.31	6,473.9	-1,514.1	-1,330.8	2,015.4	0.00	0.00	0.00
6,900.0	18.69	221.31	6,568.6	-1,538.1	-1,352.0	2,047.4	0.00	0.00	0.00
7,000.0	18.69	221.31	6,663.4	-1,562.2	-1,373.1	2,079.5	0.00	0.00	0.00
7,100.0	18.69	221.31	6,758.1	-1,586.3	-1,394.3	2,111.5	0.00	0.00	0.00
7,200.0	18.69	221.31	6,852.8	-1,610.3	-1,415.4	2,143.5	0.00	0.00	0.00
7,300.0	18.69	221.31	6,947.5	-1,634.4	-1,436.6	2,175.6	0.00	0.00	0.00
7,400.0	18.69	221.31	7,042.3	-1,658.4	-1,457.7	2,207.6	0.00	0.00	0.00
7,500.0	18.69	221.31	7,137.0	-1,682.5	-1,478.9	2,239.6	0.00	0.00	0.00
Drop 3° /100'									
7,551.8	18.69	221.31	7,186.1	-1,695.0	-1,489.8	2,256.2	0.00	0.00	0.00
7,600.0	17.24	221.31	7,231.9	-1,706.1	-1,499.7	2,271.1	3.00	-3.00	0.00
7,700.0	14.24	221.31	7,328.2	-1,726.5	-1,517.6	2,298.2	3.00	-3.00	0.00
7,800.0	11.24	221.31	7,425.7	-1,743.1	-1,532.1	2,320.3	3.00	-3.00	0.00
7,900.0	8.24	221.31	7,524.2	-1,755.8	-1,543.3	2,337.2	3.00	-3.00	0.00
8,000.0	5.24	221.31	7,623.5	-1,764.6	-1,551.0	2,348.9	3.00	-3.00	0.00
8,100.0	2.24	221.31	7,723.3	-1,769.5	-1,555.3	2,355.4	3.00	-3.00	0.00
EOD @ Vertical / Build 1.5° / 100' - Ohio Creek - TOG									
8,174.7	0.00	0.00	7,798.0	-1,770.6	-1,556.3	2,356.9	3.00	-3.00	0.00
8,200.0	0.38	250.00	7,823.3	-1,770.6	-1,556.4	2,357.0	1.50	1.50	0.00
EOB @ 1.54° Inc. / 250.00° Azm									
8,277.7	1.54	250.00	7,900.9	-1,771.1	-1,557.6	2,358.1	1.50	1.50	0.00
8,300.0	1.54	250.00	7,923.3	-1,771.3	-1,558.2	2,358.7	0.00	0.00	0.00
8,400.0	1.54	250.00	8,023.2	-1,772.2	-1,560.7	2,361.1	0.00	0.00	0.00
Williams Fork									
8,419.8	1.54	250.00	8,043.0	-1,772.4	-1,561.2	2,361.5	0.00	0.00	0.00
8,500.0	1.54	250.00	8,123.2	-1,773.1	-1,563.2	2,363.5	0.00	0.00	0.00
8,600.0	1.54	250.00	8,223.1	-1,774.1	-1,565.8	2,365.8	0.00	0.00	0.00
8,700.0	1.54	250.00	8,323.1	-1,775.0	-1,568.3	2,368.2	0.00	0.00	0.00
8,800.0	1.54	250.00	8,423.1	-1,775.9	-1,570.8	2,370.6	0.00	0.00	0.00

Database:	EDM 5000.1 Single User Db	Local Co-ordinate Reference:	Well BJU G35 FED 14C-35 496 - Slot 14C-35
Company:	Caerus Oil & Gas	TVD Reference:	RKB @ 8194.0usft (H&P#329)
Project:	Garfield County, CO	MD Reference:	RKB @ 8194.0usft (H&P#329)
Site:	NPM G35 496 Pad	North Reference:	True
Well:	BJU G35 FED 14C-35 496	Survey Calculation Method:	Minimum Curvature
Wellbore:	Wellbore #1		
Design:	Design #2		

Planned Survey										
Measured Depth (usft)	Inclination (°)	Azimuth (°)	Vertical Depth (usft)	+N/-S (usft)	+E/-W (usft)	Vertical Section (usft)	Dogleg Rate (°/100usft)	Build Rate (°/100usft)	Turn Rate (°/100usft)	
8,900.0	1.54	250.00	8,523.0	-1,776.8	-1,573.4	2,373.0	0.00	0.00	0.00	
9,000.0	1.54	250.00	8,623.0	-1,777.7	-1,575.9	2,375.4	0.00	0.00	0.00	
9,100.0	1.54	250.00	8,723.0	-1,778.7	-1,578.4	2,377.8	0.00	0.00	0.00	
9,200.0	1.54	250.00	8,822.9	-1,779.6	-1,581.0	2,380.2	0.00	0.00	0.00	
9,300.0	1.54	250.00	8,922.9	-1,780.5	-1,583.5	2,382.6	0.00	0.00	0.00	
9,400.0	1.54	250.00	9,022.9	-1,781.4	-1,586.0	2,385.0	0.00	0.00	0.00	
9,500.0	1.54	250.00	9,122.8	-1,782.3	-1,588.6	2,387.3	0.00	0.00	0.00	
9,600.0	1.54	250.00	9,222.8	-1,783.3	-1,591.1	2,389.7	0.00	0.00	0.00	
9,700.0	1.54	250.00	9,322.8	-1,784.2	-1,593.6	2,392.1	0.00	0.00	0.00	
9,800.0	1.54	250.00	9,422.7	-1,785.1	-1,596.2	2,394.5	0.00	0.00	0.00	
9,900.0	1.54	250.00	9,522.7	-1,786.0	-1,598.7	2,396.9	0.00	0.00	0.00	
10,000.0	1.54	250.00	9,622.6	-1,787.0	-1,601.2	2,399.3	0.00	0.00	0.00	
10,100.0	1.54	250.00	9,722.6	-1,787.9	-1,603.8	2,401.7	0.00	0.00	0.00	
10,200.0	1.54	250.00	9,822.6	-1,788.8	-1,606.3	2,404.1	0.00	0.00	0.00	
10,300.0	1.54	250.00	9,922.5	-1,789.7	-1,608.8	2,406.5	0.00	0.00	0.00	
10,400.0	1.54	250.00	10,022.5	-1,790.6	-1,611.4	2,408.8	0.00	0.00	0.00	
10,500.0	1.54	250.00	10,122.5	-1,791.6	-1,613.9	2,411.2	0.00	0.00	0.00	
10,600.0	1.54	250.00	10,222.4	-1,792.5	-1,616.4	2,413.6	0.00	0.00	0.00	
10,700.0	1.54	250.00	10,322.4	-1,793.4	-1,619.0	2,416.0	0.00	0.00	0.00	
10,800.0	1.54	250.00	10,422.4	-1,794.3	-1,621.5	2,418.4	0.00	0.00	0.00	
10,900.0	1.54	250.00	10,522.3	-1,795.3	-1,624.0	2,420.8	0.00	0.00	0.00	
11,000.0	1.54	250.00	10,622.3	-1,796.2	-1,626.6	2,423.2	0.00	0.00	0.00	
11,100.0	1.54	250.00	10,722.2	-1,797.1	-1,629.1	2,425.6	0.00	0.00	0.00	
Cameo										
11,134.8	1.54	250.00	10,757.0	-1,797.4	-1,630.0	2,426.4	0.00	0.00	0.00	
11,200.0	1.54	250.00	10,822.2	-1,798.0	-1,631.6	2,428.0	0.00	0.00	0.00	
11,300.0	1.54	250.00	10,922.2	-1,798.9	-1,634.2	2,430.3	0.00	0.00	0.00	
11,400.0	1.54	250.00	11,022.1	-1,799.9	-1,636.7	2,432.7	0.00	0.00	0.00	
11,500.0	1.54	250.00	11,122.1	-1,800.8	-1,639.2	2,435.1	0.00	0.00	0.00	
11,600.0	1.54	250.00	11,222.1	-1,801.7	-1,641.7	2,437.5	0.00	0.00	0.00	
11,700.0	1.54	250.00	11,322.0	-1,802.6	-1,644.3	2,439.9	0.00	0.00	0.00	
Rollins										
11,737.0	1.54	250.00	11,359.0	-1,803.0	-1,645.2	2,440.8	0.00	0.00	0.00	
11,800.0	1.54	250.00	11,422.0	-1,803.6	-1,646.8	2,442.3	0.00	0.00	0.00	
11,900.0	1.54	250.00	11,522.0	-1,804.5	-1,649.3	2,444.7	0.00	0.00	0.00	
TD @ 11937.1' MD / 11559.0' TVD										
11,937.1	1.54	250.00	11,559.0	-1,804.8	-1,650.3	2,445.6	0.00	0.00	0.00	

Design Targets										
Target Name	Dip Angle (°)	Dip Dir. (°)	TVD (usft)	+N/-S (usft)	+E/-W (usft)	Northing (usft)	Easting (usft)	Latitude	Longitude	
14C-35 - OHCR - hit/miss target - Shape - Point	0.00	0.00	7,798.0	-1,770.6	-1,556.3	14,413,426.99	2,445,593.93	39.655474	-108.139513	
14C-35 - PBHL - plan hits target center - Ellipse (radii L100.0 W50.0 on 250.00 azi)	0.00	0.00	11,559.0	-1,804.8	-1,650.3	14,413,389.80	2,445,501.10	39.655380	-108.139847	

Database:	EDM 5000.1 Single User Db	Local Co-ordinate Reference:	Well BJU G35 FED 14C-35 496 - Slot 14C-35
Company:	Caerus Oil & Gas	TVD Reference:	RKB @ 8194.0usft (H&P#329)
Project:	Garfield County, CO	MD Reference:	RKB @ 8194.0usft (H&P#329)
Site:	NPM G35 496 Pad	North Reference:	True
Well:	BJU G35 FED 14C-35 496	Survey Calculation Method:	Minimum Curvature
Wellbore:	Wellbore #1		
Design:	Design #2		

Formations						
Measured Depth (usft)	Vertical Depth (usft)	Name	Lithology	Dip (°)	Dip Direction (°)	
2,573.3	2,470.0	Wasatch				
5,740.2	5,470.0	Wasatch G				
6,083.3	5,795.0	Fort Union				
8,174.7	7,798.0	Ohio Creek				
8,174.7	7,798.0	TOG				
8,419.8	8,043.0	Williams Fork				
11,134.8	10,757.0	Cameo				
11,737.0	11,359.0	Rollins				

Plan Annotations					
Measured Depth (usft)	Vertical Depth (usft)	Local Coordinates			
		+N/-S (usft)	+E/-W (usft)	Comment	
200.0	200.0	0.0	0.0	Build 3° / 100'	
822.9	811.9	-75.6	-66.5	EOB @ 18.69° Inc. / 221.31° Azm	
7,551.8	7,186.1	-1,695.0	-1,489.8	Drop 3° / 100'	
8,174.7	7,798.0	-1,770.6	-1,556.3	EOD @ Vertical / Build 1.5° / 100'	
8,277.7	7,900.9	-1,771.1	-1,557.6	EOB @ 1.54° Inc. / 250.00° Azm	
11,937.1	11,559.0	-1,804.8	-1,650.3	TD @ 11937.1' MD / 11559.0' TVD	