

Project: Garfield County, CO
 Site: NPM G35 496 Pad
 Well: BJU G35 FED 14B-35 496
 Wellbore: Wellbore #1
 Design: Design #2
 Latitude: 39.660460
 Longitude: -108.134124
 Ground Level: 8164.0
 RKB @ 8194.0usft (H&P#329)

FORMATION TOP DETAILS

TVDPath	MDPath	Formation
2483.0	2571.6	Wasatch
5483.0	5711.4	Wasatch G
5795.0	6037.9	Fort Union
7804.0	8122.8	Ohio Creek
7804.0	8122.8	TOG
8050.0	8365.8	Williams Fork
10766.0	11085.8	Cameo
11367.0	11687.0	Rollins

REFERENCE INFORMATION

Co-ordinate (N/E) Reference: Well BJU G35 FED 14B-35 496 - Slot 14B-35, True North
 Vertical (TVD) Reference: RKB @ 8194.0usft (H&P#329)
 Section (VS) Reference: Slot - 14B-35(0.0N, 0.0E)
 Measured Depth Reference: RKB @ 8194.0usft (H&P#329)
 Calculation Method: Minimum Curvature

WELL DETAILS: BJU G35 FED 14B-35 496

+N/-S	+E/-W	Northing	Easting	Latitude	Longitude
0.0	0.0	14415291.30	8164.0 2447053.00	39.660460	-108.134124 14B-35

PROJECT DETAILS: Garfield County, CO

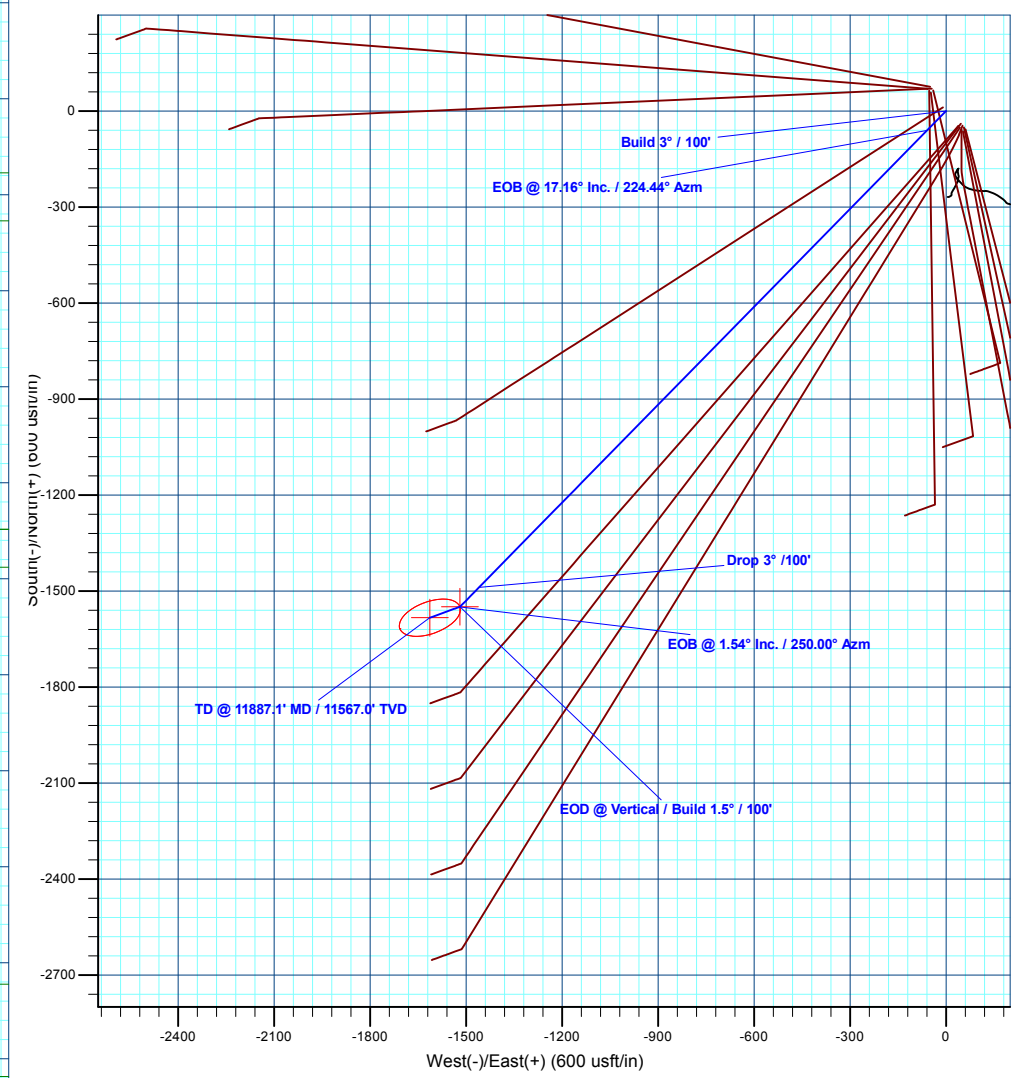
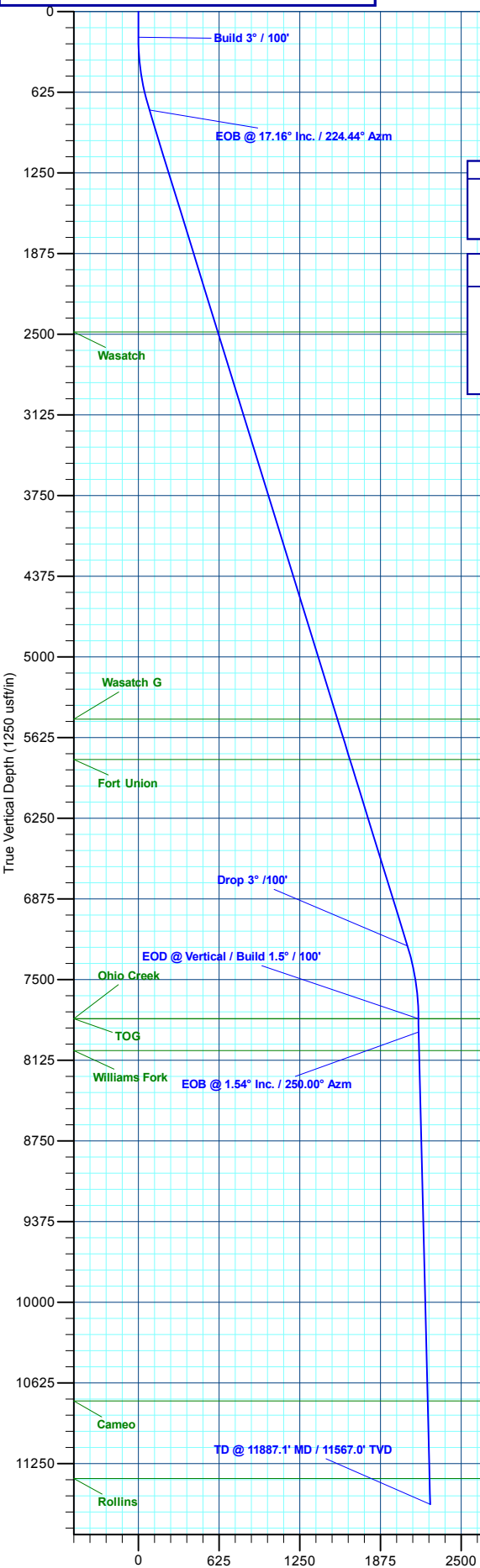
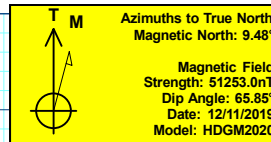
Geodetic System: Universal Transverse Mercator (US Survey Feet)
 Datum: NAD 1927 - Western US
 Ellipsoid: Clarke 1866
 Zone: Zone 12N (114 W to 108 W)
 System Datum: Mean Sea Level

DESIGN TARGET DETAILS

Name	TVD	+N/-S	+E/-W	Northing	Easting	Latitude	Longitude
14B-35 - OHCR	7804.0	-1549.4	-1519.3	14413694.19	2445583.93	39.656207	-108.139518
14B-35 - PBHL	11567.0	-1583.6	-1613.3	14413657.00	2445491.10	39.656114	-108.139852

SECTION DETAILS

MD	Inc	Azi	TVD	+N/-S	+E/-W	Dleg	TFace	VSect	Annotation
0.0	0.00	0.00	0.0	0.0	0.0	0.00	0.00	0.0	
200.0	0.00	0.00	200.0	0.0	0.0	0.00	0.00	0.0	Build 3° / 100'
772.0	17.16	224.44	763.5	-60.7	-59.5	3.00	224.44	85.0	EOB @ 17.16° Inc. / 224.44° Azm
7550.8	17.16	224.44	7240.5	-1488.7	-1459.8	0.00	0.00	2084.6	Drop 3° / 100'
8122.8	0.00	0.00	7804.0	-1549.4	-1519.3	3.00	180.00	2169.6	EOD @ Vertical / Build 1.5° / 100'
8225.7	1.54	250.00	7906.9	-1549.9	-1520.6	1.50	250.00	2170.9	EOB @ 1.54° Inc. / 250.00° Azm
11887.1	1.54	250.00	11567.0	-1583.6	-1613.3	0.00	0.00	2260.6	TD @ 11887.1' MD / 11567.0' TVD



Plan: Design #2 (BJU G35 FED 14B-35 496/Wellbore #1)
 Created By: Will Jircik Date: 12:07, June 07 2021



Caerus Oil & Gas

Garfield County, CO

NPM G35 496 Pad

BJU G35 FED 14B-35 496 - Slot 14B-35

Wellbore #1

Plan: Design #2

KLX Well Planning Report

07 June, 2021



Database:	EDM 5000.1 Single User Db	Local Co-ordinate Reference:	Well BJU G35 FED 14B-35 496 - Slot 14B-35
Company:	Caerus Oil & Gas	TVD Reference:	RKB @ 8194.0usft (H&P#329)
Project:	Garfield County, CO	MD Reference:	RKB @ 8194.0usft (H&P#329)
Site:	NPM G35 496 Pad	North Reference:	True
Well:	BJU G35 FED 14B-35 496	Survey Calculation Method:	Minimum Curvature
Wellbore:	Wellbore #1		
Design:	Design #2		

Project	Garfield County, CO		
Map System:	Universal Transverse Mercator (US Survey Fee	System Datum:	Mean Sea Level
Geo Datum:	NAD 1927 - Western US		
Map Zone:	Zone 12N (114 W to 108 W)		

Site	NPM G35 496 Pad				
Site Position:		Northing:	14,415,365.20 usft	Latitude:	39.660667
From:	Map	Easting:	2,447,000.80 usft	Longitude:	-108.134301
Position Uncertainty:	0.0 usft	Slot Radius:	13-3/16 "	Grid Convergence:	1.83 °

Well	BJU G35 FED 14B-35 496 - Slot 14B-35					
Well Position	+N/-S	-75.5 usft	Northing:	14,415,291.30 usft	Latitude:	39.660460
	+E/-W	49.8 usft	Easting:	2,447,053.00 usft	Longitude:	-108.134124
Position Uncertainty		0.0 usft	Wellhead Elevation:		Ground Level:	8,164.0 usft

Wellbore	Wellbore #1				
Magnetics	Model Name	Sample Date	Declination (°)	Dip Angle (°)	Field Strength (nT)
	HDGM2020	12/11/2019	9.48	65.85	51,253.00000000

Design	Design #2			
Audit Notes:				
Version:	Phase:	PLAN	Tie On Depth:	0.0
Vertical Section:	Depth From (TVD) (usft)	+N/-S (usft)	+E/-W (usft)	Direction (°)
	0.0	0.0	0.0	225.53

Plan Sections										
Measured Depth (usft)	Inclination (°)	Azimuth (°)	Vertical Depth (usft)	+N/-S (usft)	+E/-W (usft)	Dogleg Rate (°/100usft)	Build Rate (°/100usft)	Turn Rate (°/100usft)	TFO (°)	Target
0.0	0.00	0.00	0.0	0.0	0.0	0.00	0.00	0.00	0.00	
200.0	0.00	0.00	200.0	0.0	0.0	0.00	0.00	0.00	0.00	
772.0	17.16	224.44	763.5	-60.7	-59.5	3.00	3.00	0.00	224.44	
7,550.8	17.16	224.44	7,240.5	-1,488.7	-1,459.8	0.00	0.00	0.00	0.00	
8,122.8	0.00	0.00	7,804.0	-1,549.4	-1,519.3	3.00	-3.00	0.00	180.00	14B-35 - OHCR
8,225.7	1.54	250.00	7,906.9	-1,549.9	-1,520.6	1.50	1.50	-106.91	250.00	
11,887.1	1.54	250.00	11,567.0	-1,583.6	-1,613.3	0.00	0.00	0.00	0.00	14B-35 - PBHL

Database:	EDM 5000.1 Single User Db	Local Co-ordinate Reference:	Well BJU G35 FED 14B-35 496 - Slot 14B-35
Company:	Caerus Oil & Gas	TVD Reference:	RKB @ 8194.0usft (H&P#329)
Project:	Garfield County, CO	MD Reference:	RKB @ 8194.0usft (H&P#329)
Site:	NPM G35 496 Pad	North Reference:	True
Well:	BJU G35 FED 14B-35 496	Survey Calculation Method:	Minimum Curvature
Wellbore:	Wellbore #1		
Design:	Design #2		

Planned Survey									
Measured Depth (usft)	Inclination (°)	Azimuth (°)	Vertical Depth (usft)	+N/-S (usft)	+E/-W (usft)	Vertical Section (usft)	Dogleg Rate (°/100usft)	Build Rate (°/100usft)	Turn Rate (°/100usft)
0.0	0.00	0.00	0.0	0.0	0.0	0.0	0.00	0.00	0.00
100.0	0.00	0.00	100.0	0.0	0.0	0.0	0.00	0.00	0.00
Build 3° / 100'									
200.0	0.00	0.00	200.0	0.0	0.0	0.0	0.00	0.00	0.00
300.0	3.00	224.44	300.0	-1.9	-1.8	2.6	3.00	3.00	0.00
400.0	6.00	224.44	399.6	-7.5	-7.3	10.5	3.00	3.00	0.00
500.0	9.00	224.44	498.8	-16.8	-16.5	23.5	3.00	3.00	0.00
600.0	12.00	224.44	597.1	-29.8	-29.2	41.7	3.00	3.00	0.00
700.0	15.00	224.44	694.3	-46.5	-45.6	65.1	3.00	3.00	0.00
EOB @ 17.16° Inc. / 224.44° Azm									
772.0	17.16	224.44	763.5	-60.7	-59.5	85.0	3.00	3.00	0.00
800.0	17.16	224.44	790.2	-66.6	-65.3	93.3	0.00	0.00	0.00
900.0	17.16	224.44	885.8	-87.7	-86.0	122.8	0.00	0.00	0.00
1,000.0	17.16	224.44	981.3	-108.7	-106.6	152.3	0.00	0.00	0.00
1,100.0	17.16	224.44	1,076.9	-129.8	-127.3	181.8	0.00	0.00	0.00
1,200.0	17.16	224.44	1,172.4	-150.9	-147.9	211.3	0.00	0.00	0.00
1,300.0	17.16	224.44	1,268.0	-171.9	-168.6	240.8	0.00	0.00	0.00
1,400.0	17.16	224.44	1,363.5	-193.0	-189.3	270.3	0.00	0.00	0.00
1,500.0	17.16	224.44	1,459.1	-214.1	-209.9	299.7	0.00	0.00	0.00
1,600.0	17.16	224.44	1,554.6	-235.1	-230.6	329.2	0.00	0.00	0.00
1,700.0	17.16	224.44	1,650.2	-256.2	-251.2	358.7	0.00	0.00	0.00
1,800.0	17.16	224.44	1,745.7	-277.3	-271.9	388.2	0.00	0.00	0.00
1,900.0	17.16	224.44	1,841.3	-298.3	-292.5	417.7	0.00	0.00	0.00
2,000.0	17.16	224.44	1,936.8	-319.4	-313.2	447.2	0.00	0.00	0.00
2,100.0	17.16	224.44	2,032.4	-340.5	-333.8	476.7	0.00	0.00	0.00
2,200.0	17.16	224.44	2,127.9	-361.5	-354.5	506.2	0.00	0.00	0.00
2,300.0	17.16	224.44	2,223.5	-382.6	-375.2	535.7	0.00	0.00	0.00
2,400.0	17.16	224.44	2,319.0	-403.6	-395.8	565.2	0.00	0.00	0.00
2,500.0	17.16	224.44	2,414.6	-424.7	-416.5	594.7	0.00	0.00	0.00
Wasatch									
2,571.6	17.16	224.44	2,483.0	-439.8	-431.3	615.9	0.00	0.00	0.00
2,600.0	17.16	224.44	2,510.1	-445.8	-437.1	624.2	0.00	0.00	0.00
2,700.0	17.16	224.44	2,605.7	-466.8	-457.8	653.7	0.00	0.00	0.00
2,800.0	17.16	224.44	2,701.2	-487.9	-478.4	683.2	0.00	0.00	0.00
2,900.0	17.16	224.44	2,796.8	-509.0	-499.1	712.7	0.00	0.00	0.00
3,000.0	17.16	224.44	2,892.3	-530.0	-519.8	742.2	0.00	0.00	0.00
3,100.0	17.16	224.44	2,987.9	-551.1	-540.4	771.7	0.00	0.00	0.00
3,200.0	17.16	224.44	3,083.4	-572.2	-561.1	801.2	0.00	0.00	0.00
3,300.0	17.16	224.44	3,179.0	-593.2	-581.7	830.7	0.00	0.00	0.00
3,400.0	17.16	224.44	3,274.5	-614.3	-602.4	860.2	0.00	0.00	0.00
3,500.0	17.16	224.44	3,370.1	-635.4	-623.0	889.7	0.00	0.00	0.00
3,600.0	17.16	224.44	3,465.6	-656.4	-643.7	919.2	0.00	0.00	0.00
3,700.0	17.16	224.44	3,561.2	-677.5	-664.4	948.7	0.00	0.00	0.00
3,800.0	17.16	224.44	3,656.7	-698.6	-685.0	978.2	0.00	0.00	0.00
3,900.0	17.16	224.44	3,752.2	-719.6	-705.7	1,007.7	0.00	0.00	0.00
4,000.0	17.16	224.44	3,847.8	-740.7	-726.3	1,037.2	0.00	0.00	0.00
4,100.0	17.16	224.44	3,943.3	-761.8	-747.0	1,066.7	0.00	0.00	0.00
4,200.0	17.16	224.44	4,038.9	-782.8	-767.6	1,096.2	0.00	0.00	0.00
4,300.0	17.16	224.44	4,134.4	-803.9	-788.3	1,125.7	0.00	0.00	0.00
4,400.0	17.16	224.44	4,230.0	-825.0	-809.0	1,155.2	0.00	0.00	0.00
4,500.0	17.16	224.44	4,325.5	-846.0	-829.6	1,184.7	0.00	0.00	0.00
4,600.0	17.16	224.44	4,421.1	-867.1	-850.3	1,214.2	0.00	0.00	0.00
4,700.0	17.16	224.44	4,516.6	-888.2	-870.9	1,243.7	0.00	0.00	0.00

Database:	EDM 5000.1 Single User Db	Local Co-ordinate Reference:	Well BJU G35 FED 14B-35 496 - Slot 14B-35
Company:	Caerus Oil & Gas	TVD Reference:	RKB @ 8194.0usft (H&P#329)
Project:	Garfield County, CO	MD Reference:	RKB @ 8194.0usft (H&P#329)
Site:	NPM G35 496 Pad	North Reference:	True
Well:	BJU G35 FED 14B-35 496	Survey Calculation Method:	Minimum Curvature
Wellbore:	Wellbore #1		
Design:	Design #2		

Planned Survey										
Measured Depth (usft)	Inclination (°)	Azimuth (°)	Vertical Depth (usft)	+N/-S (usft)	+E/-W (usft)	Vertical Section (usft)	Dogleg Rate (°/100usft)	Build Rate (°/100usft)	Turn Rate (°/100usft)	
4,800.0	17.16	224.44	4,612.2	-909.2	-891.6	1,273.2	0.00	0.00	0.00	
4,900.0	17.16	224.44	4,707.7	-930.3	-912.2	1,302.7	0.00	0.00	0.00	
5,000.0	17.16	224.44	4,803.3	-951.3	-932.9	1,332.2	0.00	0.00	0.00	
5,100.0	17.16	224.44	4,898.8	-972.4	-953.6	1,361.7	0.00	0.00	0.00	
5,200.0	17.16	224.44	4,994.4	-993.5	-974.2	1,391.2	0.00	0.00	0.00	
5,300.0	17.16	224.44	5,089.9	-1,014.5	-994.9	1,420.7	0.00	0.00	0.00	
5,400.0	17.16	224.44	5,185.5	-1,035.6	-1,015.5	1,450.2	0.00	0.00	0.00	
5,500.0	17.16	224.44	5,281.0	-1,056.7	-1,036.2	1,479.7	0.00	0.00	0.00	
5,600.0	17.16	224.44	5,376.6	-1,077.7	-1,056.8	1,509.2	0.00	0.00	0.00	
5,700.0	17.16	224.44	5,472.1	-1,098.8	-1,077.5	1,538.7	0.00	0.00	0.00	
Wasatch G										
5,711.4	17.16	224.44	5,483.0	-1,101.2	-1,079.8	1,542.0	0.00	0.00	0.00	
5,800.0	17.16	224.44	5,567.7	-1,119.9	-1,098.1	1,568.2	0.00	0.00	0.00	
5,900.0	17.16	224.44	5,663.2	-1,140.9	-1,118.8	1,597.7	0.00	0.00	0.00	
6,000.0	17.16	224.44	5,758.8	-1,162.0	-1,139.5	1,627.2	0.00	0.00	0.00	
Fort Union										
6,037.9	17.16	224.44	5,795.0	-1,170.0	-1,147.3	1,638.3	0.00	0.00	0.00	
6,100.0	17.16	224.44	5,854.3	-1,183.1	-1,160.1	1,656.7	0.00	0.00	0.00	
6,200.0	17.16	224.44	5,949.9	-1,204.1	-1,180.8	1,686.2	0.00	0.00	0.00	
6,300.0	17.16	224.44	6,045.4	-1,225.2	-1,201.4	1,715.7	0.00	0.00	0.00	
6,400.0	17.16	224.44	6,141.0	-1,246.3	-1,222.1	1,745.2	0.00	0.00	0.00	
6,500.0	17.16	224.44	6,236.5	-1,267.3	-1,242.7	1,774.7	0.00	0.00	0.00	
6,600.0	17.16	224.44	6,332.1	-1,288.4	-1,263.4	1,804.1	0.00	0.00	0.00	
6,700.0	17.16	224.44	6,427.6	-1,309.5	-1,284.1	1,833.6	0.00	0.00	0.00	
6,800.0	17.16	224.44	6,523.2	-1,330.5	-1,304.7	1,863.1	0.00	0.00	0.00	
6,900.0	17.16	224.44	6,618.7	-1,351.6	-1,325.4	1,892.6	0.00	0.00	0.00	
7,000.0	17.16	224.44	6,714.3	-1,372.7	-1,346.0	1,922.1	0.00	0.00	0.00	
7,100.0	17.16	224.44	6,809.8	-1,393.7	-1,366.7	1,951.6	0.00	0.00	0.00	
7,200.0	17.16	224.44	6,905.4	-1,414.8	-1,387.3	1,981.1	0.00	0.00	0.00	
7,300.0	17.16	224.44	7,000.9	-1,435.8	-1,408.0	2,010.6	0.00	0.00	0.00	
7,400.0	17.16	224.44	7,096.5	-1,456.9	-1,428.7	2,040.1	0.00	0.00	0.00	
7,500.0	17.16	224.44	7,192.0	-1,478.0	-1,449.3	2,069.6	0.00	0.00	0.00	
Drop 3° /100'										
7,550.8	17.16	224.44	7,240.5	-1,488.7	-1,459.8	2,084.6	0.00	0.00	0.00	
7,600.0	15.68	224.44	7,287.7	-1,498.6	-1,469.5	2,098.5	3.00	-3.00	0.00	
7,700.0	12.68	224.44	7,384.7	-1,516.1	-1,486.7	2,123.0	3.00	-3.00	0.00	
7,800.0	9.68	224.44	7,482.8	-1,530.0	-1,500.3	2,142.4	3.00	-3.00	0.00	
7,900.0	6.68	224.44	7,581.7	-1,540.1	-1,510.2	2,156.6	3.00	-3.00	0.00	
8,000.0	3.68	224.44	7,681.3	-1,546.6	-1,516.6	2,165.7	3.00	-3.00	0.00	
8,100.0	0.68	224.44	7,781.2	-1,549.3	-1,519.2	2,169.5	3.00	-3.00	0.00	
EOD @ Vertical / Build 1.5° / 100' - Ohio Creek - TOG										
8,122.8	0.00	0.00	7,804.0	-1,549.4	-1,519.3	2,169.6	3.00	-3.00	0.00	
8,200.0	1.16	250.00	7,881.2	-1,549.6	-1,520.1	2,170.3	1.50	1.50	0.00	
EOB @ 1.54° Inc. / 250.00° Azm										
8,225.7	1.54	250.00	7,906.9	-1,549.9	-1,520.6	2,170.9	1.50	1.50	0.00	
8,300.0	1.54	250.00	7,981.2	-1,550.5	-1,522.5	2,172.7	0.00	0.00	0.00	
Williams Fork										
8,368.8	1.54	250.00	8,050.0	-1,551.2	-1,524.3	2,174.4	0.00	0.00	0.00	
8,400.0	1.54	250.00	8,081.2	-1,551.5	-1,525.0	2,175.1	0.00	0.00	0.00	
8,500.0	1.54	250.00	8,181.1	-1,552.4	-1,527.6	2,177.6	0.00	0.00	0.00	
8,600.0	1.54	250.00	8,281.1	-1,553.3	-1,530.1	2,180.0	0.00	0.00	0.00	
8,700.0	1.54	250.00	8,381.0	-1,554.2	-1,532.6	2,182.5	0.00	0.00	0.00	
8,800.0	1.54	250.00	8,481.0	-1,555.1	-1,535.2	2,185.0	0.00	0.00	0.00	

Database:	EDM 5000.1 Single User Db	Local Co-ordinate Reference:	Well BJU G35 FED 14B-35 496 - Slot 14B-35
Company:	Caerus Oil & Gas	TVD Reference:	RKB @ 8194.0usft (H&P#329)
Project:	Garfield County, CO	MD Reference:	RKB @ 8194.0usft (H&P#329)
Site:	NPM G35 496 Pad	North Reference:	True
Well:	BJU G35 FED 14B-35 496	Survey Calculation Method:	Minimum Curvature
Wellbore:	Wellbore #1		
Design:	Design #2		

Planned Survey										
Measured Depth (usft)	Inclination (°)	Azimuth (°)	Vertical Depth (usft)	+N/-S (usft)	+E/-W (usft)	Vertical Section (usft)	Dogleg Rate (°/100usft)	Build Rate (°/100usft)	Turn Rate (°/100usft)	
8,900.0	1.54	250.00	8,581.0	-1,556.1	-1,537.7	2,187.4	0.00	0.00	0.00	
9,000.0	1.54	250.00	8,680.9	-1,557.0	-1,540.2	2,189.9	0.00	0.00	0.00	
9,100.0	1.54	250.00	8,780.9	-1,557.9	-1,542.8	2,192.3	0.00	0.00	0.00	
9,200.0	1.54	250.00	8,880.9	-1,558.8	-1,545.3	2,194.8	0.00	0.00	0.00	
9,300.0	1.54	250.00	8,980.8	-1,559.8	-1,547.8	2,197.2	0.00	0.00	0.00	
9,400.0	1.54	250.00	9,080.8	-1,560.7	-1,550.4	2,199.7	0.00	0.00	0.00	
9,500.0	1.54	250.00	9,180.8	-1,561.6	-1,552.9	2,202.1	0.00	0.00	0.00	
9,600.0	1.54	250.00	9,280.7	-1,562.5	-1,555.4	2,204.6	0.00	0.00	0.00	
9,700.0	1.54	250.00	9,380.7	-1,563.4	-1,557.9	2,207.0	0.00	0.00	0.00	
9,800.0	1.54	250.00	9,480.6	-1,564.4	-1,560.5	2,209.5	0.00	0.00	0.00	
9,900.0	1.54	250.00	9,580.6	-1,565.3	-1,563.0	2,211.9	0.00	0.00	0.00	
10,000.0	1.54	250.00	9,680.6	-1,566.2	-1,565.5	2,214.4	0.00	0.00	0.00	
10,100.0	1.54	250.00	9,780.5	-1,567.1	-1,568.1	2,216.8	0.00	0.00	0.00	
10,200.0	1.54	250.00	9,880.5	-1,568.0	-1,570.6	2,219.3	0.00	0.00	0.00	
10,300.0	1.54	250.00	9,980.5	-1,569.0	-1,573.1	2,221.7	0.00	0.00	0.00	
10,400.0	1.54	250.00	10,080.4	-1,569.9	-1,575.7	2,224.2	0.00	0.00	0.00	
10,500.0	1.54	250.00	10,180.4	-1,570.8	-1,578.2	2,226.6	0.00	0.00	0.00	
10,600.0	1.54	250.00	10,280.4	-1,571.7	-1,580.7	2,229.1	0.00	0.00	0.00	
10,700.0	1.54	250.00	10,380.3	-1,572.6	-1,583.3	2,231.5	0.00	0.00	0.00	
10,800.0	1.54	250.00	10,480.3	-1,573.6	-1,585.8	2,234.0	0.00	0.00	0.00	
10,900.0	1.54	250.00	10,580.2	-1,574.5	-1,588.3	2,236.4	0.00	0.00	0.00	
11,000.0	1.54	250.00	10,680.2	-1,575.4	-1,590.8	2,238.9	0.00	0.00	0.00	
Cameo										
11,085.8	1.54	250.00	10,766.0	-1,576.2	-1,593.0	2,241.0	0.00	0.00	0.00	
11,100.0	1.54	250.00	10,780.2	-1,576.3	-1,593.4	2,241.3	0.00	0.00	0.00	
11,200.0	1.54	250.00	10,880.1	-1,577.3	-1,595.9	2,243.8	0.00	0.00	0.00	
11,300.0	1.54	250.00	10,980.1	-1,578.2	-1,598.4	2,246.2	0.00	0.00	0.00	
11,400.0	1.54	250.00	11,080.1	-1,579.1	-1,601.0	2,248.7	0.00	0.00	0.00	
11,500.0	1.54	250.00	11,180.0	-1,580.0	-1,603.5	2,251.1	0.00	0.00	0.00	
11,600.0	1.54	250.00	11,280.0	-1,580.9	-1,606.0	2,253.6	0.00	0.00	0.00	
Rollins										
11,687.0	1.54	250.00	11,367.0	-1,581.7	-1,608.2	2,255.7	0.00	0.00	0.00	
11,700.0	1.54	250.00	11,380.0	-1,581.9	-1,608.6	2,256.0	0.00	0.00	0.00	
11,800.0	1.54	250.00	11,479.9	-1,582.8	-1,611.1	2,258.5	0.00	0.00	0.00	
TD @ 11887.1' MD / 11567.0' TVD										
11,887.1	1.54	250.00	11,567.0	-1,583.6	-1,613.3	2,260.6	0.00	0.00	0.00	

Design Targets										
Target Name	Dip Angle (°)	Dip Dir. (°)	TVD (usft)	+N/-S (usft)	+E/-W (usft)	Northing (usft)	Easting (usft)	Latitude	Longitude	
14B-35 - OHCR - hit/miss target - Shape	0.00	0.00	7,804.0	-1,549.4	-1,519.3	14,413,694.19	2,445,583.93	39.656208	-108.139518	
- plan hits target center - Point										
14B-35 - PBHL - plan hits target center - Ellipse (radii L100.0 W50.0 on 250.00 azi)	0.00	0.00	11,567.0	-1,583.6	-1,613.3	14,413,657.00	2,445,491.10	39.656114	-108.139852	

Database:	EDM 5000.1 Single User Db	Local Co-ordinate Reference:	Well BJU G35 FED 14B-35 496 - Slot 14B-35
Company:	Caerus Oil & Gas	TVD Reference:	RKB @ 8194.0usft (H&P#329)
Project:	Garfield County, CO	MD Reference:	RKB @ 8194.0usft (H&P#329)
Site:	NPM G35 496 Pad	North Reference:	True
Well:	BJU G35 FED 14B-35 496	Survey Calculation Method:	Minimum Curvature
Wellbore:	Wellbore #1		
Design:	Design #2		

Formations

Measured Depth (usft)	Vertical Depth (usft)	Name	Lithology	Dip (°)	Dip Direction (°)
2,571.6	2,483.0	Wasatch			
5,711.4	5,483.0	Wasatch G			
6,037.9	5,795.0	Fort Union			
8,122.8	7,804.0	Ohio Creek			
8,122.8	7,804.0	TOG			
8,368.8	8,050.0	Williams Fork			
11,085.8	10,766.0	Cameo			
11,687.0	11,367.0	Rollins			

Plan Annotations

Measured Depth (usft)	Vertical Depth (usft)	Local Coordinates		Comment
		+N/-S (usft)	+E/-W (usft)	
200.0	200.0	0.0	0.0	Build 3° / 100'
772.0	763.5	-60.7	-59.5	EOB @ 17.16° Inc. / 224.44° Azm
7,550.8	7,240.5	-1,488.7	-1,459.8	Drop 3° / 100'
8,122.8	7,804.0	-1,549.4	-1,519.3	EOD @ Vertical / Build 1.5° / 100'
8,225.7	7,906.9	-1,549.9	-1,520.6	EOB @ 1.54° Inc. / 250.00° Azm
11,887.1	11,567.0	-1,583.6	-1,613.3	TD @ 11887.1' MD / 11567.0' TVD