

Project: Garfield County, CO
 Site: NPM G35 496 Pad
 Well: BJU G35 FED 13B-35 496
 Wellbore: Wellbore #1
 Design: Design #2
 Latitude: 39.660651
 Longitude: -108.134284
 Ground Level: 8164.0
 RKB @ 8194.0usft (H&P#329)

FORMATION TOP DETAILS		
TVDPath	MDPath	Formation
2520.0	2600.6	Wasatch
5520.0	5739.4	Wasatch G
5803.0	6035.6	Fort Union
7812.0	8120.0	Ohio Creek
8120.0	8120.0	TOG
8061.0	8369.0	Williams Fork
10795.0	11104.0	Cameo
11391.0	11700.2	Rollins

REFERENCE INFORMATION

Co-ordinate (N/E) Reference: Well BJU G35 FED 13B-35 496 - Slot 13B-35, True North
 Vertical (TVD) Reference: RKB @ 8194.0usft (H&P#329)
 Section (VS) Reference: Slot - 13B-35(0.0N, 0.0E)
 Measured Depth Reference: RKB @ 8194.0usft (H&P#329)
 Calculation Method: Minimum Curvature

WELL DETAILS: BJU G35 FED 13B-35 496

+N/-S	+E/-W	Northing	Easting	Latitude	Longitude
0.0	0.0	14415359.60	2447005.80	39.660651	-108.134284

PROJECT DETAILS: Garfield County, CO

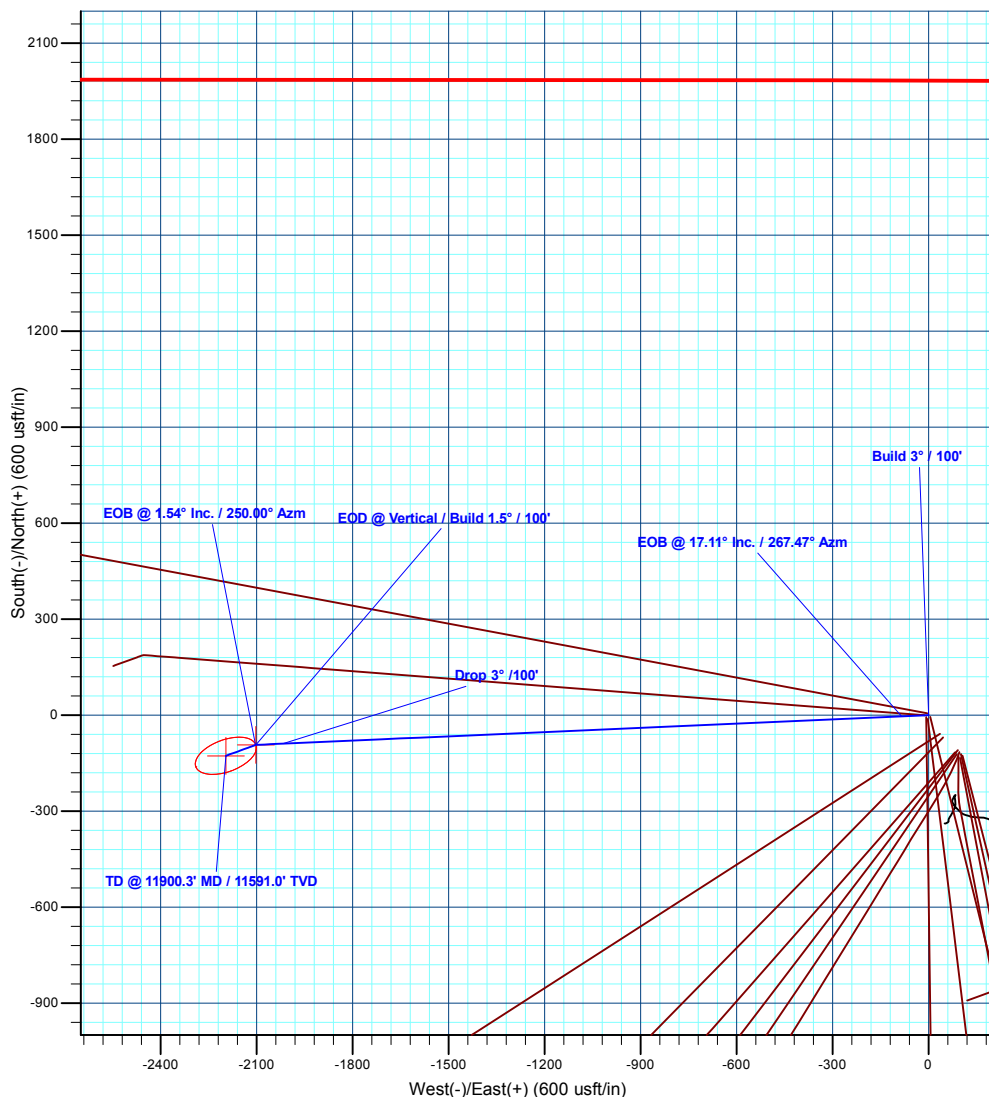
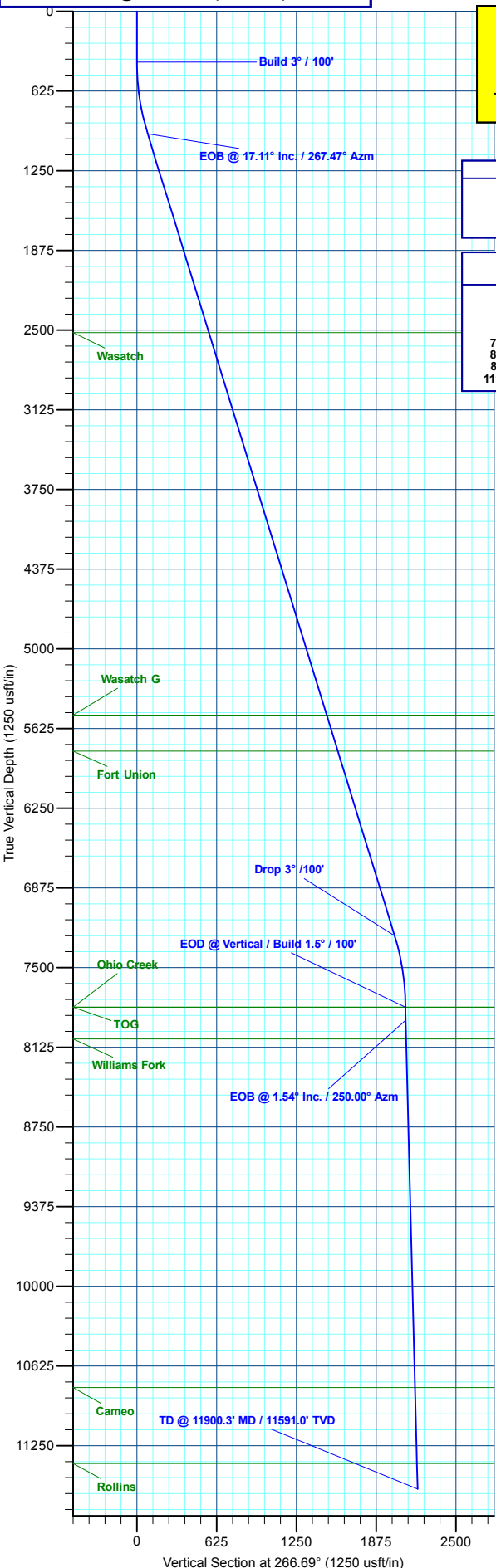
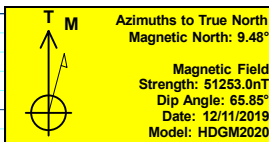
Geodetic System: Universal Transverse Mercator (US Survey Feet)
 Datum: NAD 1927 - Western US
 Ellipsoid: Clarke 1866
 Zone: Zone 12N (114 W to 108 W)
 System Datum: Mean Sea Level

DESIGN TARGET DETAILS

Name	TVD	+N/-S	+E/-W	Northing	Easting	Latitude	Longitude
13B-35 - OHCR	7812.0	-92.8	-2102.4	14415199.69	2444907.43	39.660396	-108.141749
13B-35 - PBHL	11591.0	-127.0	-2196.4	14415162.50	2444814.60	39.660302	-108.142082

SECTION DETAILS

MD	Inc	Azi	TVD	+N/-S	+E/-W	Dleg	TFace	Vsect	Annotation
0.0	0.00	0.00	0.0	0.0	0.0	0.00	0.00	0.0	
400.0	0.00	0.00	400.0	0.0	0.0	0.00	0.00	0.0	Build 3° / 100'
970.2	17.11	267.47	961.8	-3.7	-84.4	3.00	267.47	84.5	EOB @ 17.11° Inc. / 267.47° Azm
7549.7	17.11	267.47	7250.2	-89.1	-2018.0	0.00	0.00	2019.8	Drop 3° / 100'
8120.0	0.00	0.00	7812.0	-92.8	-2102.4	3.00	180.00	2104.3	EOD @ Vertical / Build 1.5° / 100'
8222.4	1.54	250.00	7914.4	-93.3	-2103.7	1.50	250.00	2105.6	EOB @ 1.54° Inc. / 250.00° Azm
11900.3	1.54	250.00	11591.0	-127.0	-2196.4	0.00	0.00	2200.0	TD @ 11900.3' MD / 11591.0' TVD



Plan: Design #2 (BJU G35 FED 13B-35 496/Wellbore #1)

Created By: Will Jircik Date: 11:56, June 07 2021



Caerus Oil & Gas

Garfield County, CO

NPM G35 496 Pad

BJU G35 FED 13B-35 496 - Slot 13B-35

Wellbore #1

Plan: Design #2

KLX Well Planning Report

07 June, 2021



Database:	EDM 5000.1 Single User Db	Local Co-ordinate Reference:	Well BJU G35 FED 13B-35 496 - Slot 13B-35
Company:	Caerus Oil & Gas	TVD Reference:	RKB @ 8194.0usft (H&P#329)
Project:	Garfield County, CO	MD Reference:	RKB @ 8194.0usft (H&P#329)
Site:	NPM G35 496 Pad	North Reference:	True
Well:	BJU G35 FED 13B-35 496	Survey Calculation Method:	Minimum Curvature
Wellbore:	Wellbore #1		
Design:	Design #2		

Project	Garfield County, CO		
Map System:	Universal Transverse Mercator (US Survey Fee	System Datum:	Mean Sea Level
Geo Datum:	NAD 1927 - Western US		
Map Zone:	Zone 12N (114 W to 108 W)		

Site		NPM G35 496 Pad			
Site Position:		Northing:	14,415,365.20 usft	Latitude:	39.660667
From:	Map	Easting:	2,447,000.80 usft	Longitude:	-108.134301
Position Uncertainty:	0.0 usft	Slot Radius:	13-3/16 "	Grid Convergence:	1.83 °

Well	BJU G35 FED 13B-35 496 - Slot 13B-35					
Well Position	+N/-S	-5.8 usft	Northing:	14,415,359.60 usft	Latitude:	39.660651
	+E/-W	4.8 usft	Easting:	2,447,005.80 usft	Longitude:	-108.134284
Position Uncertainty		0.0 usft	Wellhead Elevation:		Ground Level:	8,164.0 usft

Wellbore	Wellbore #1				
Magnetics	Model Name	Sample Date	Declination (°)	Dip Angle (°)	Field Strength (nT)
	HDGM2020	12/11/2019	9.48	65.85	51,253.00000000

Design	Design #2			
Audit Notes:				
Version:	Phase:	PLAN	Tie On Depth:	0.0
Vertical Section:	Depth From (TVD) (usft)	+N/-S (usft)	+E/-W (usft)	Direction (°)
	0.0	0.0	0.0	266.69

Plan Sections										
Measured Depth (usft)	Inclination (°)	Azimuth (°)	Vertical Depth (usft)	+N/-S (usft)	+E/-W (usft)	Dogleg Rate (°/100usft)	Build Rate (°/100usft)	Turn Rate (°/100usft)	TFO (°)	Target
0.0	0.00	0.00	0.0	0.0	0.0	0.00	0.00	0.00	0.00	
400.0	0.00	0.00	400.0	0.0	0.0	0.00	0.00	0.00	0.00	
970.2	17.11	267.47	961.8	-3.7	-84.4	3.00	3.00	0.00	267.47	
7,549.7	17.11	267.47	7,250.2	-89.1	-2,018.0	0.00	0.00	0.00	0.00	
8,120.0	0.00	0.00	7,812.0	-92.8	-2,102.4	3.00	-3.00	0.00	180.00	13B-35 - OHCR
8,222.4	1.54	250.00	7,914.4	-93.3	-2,103.7	1.50	1.50	-107.38	250.00	
11,900.3	1.54	250.00	11,591.0	-127.0	-2,196.4	0.00	0.00	0.00	0.00	13B-35 - PBHL

Database:	EDM 5000.1 Single User Db	Local Co-ordinate Reference:	Well BJU G35 FED 13B-35 496 - Slot 13B-35
Company:	Caerus Oil & Gas	TVD Reference:	RKB @ 8194.0usft (H&P#329)
Project:	Garfield County, CO	MD Reference:	RKB @ 8194.0usft (H&P#329)
Site:	NPM G35 496 Pad	North Reference:	True
Well:	BJU G35 FED 13B-35 496	Survey Calculation Method:	Minimum Curvature
Wellbore:	Wellbore #1		
Design:	Design #2		

Planned Survey									
Measured Depth (usft)	Inclination (°)	Azimuth (°)	Vertical Depth (usft)	+N/-S (usft)	+E/-W (usft)	Vertical Section (usft)	Dogleg Rate (°/100usft)	Build Rate (°/100usft)	Turn Rate (°/100usft)
0.0	0.00	0.00	0.0	0.0	0.0	0.0	0.00	0.00	0.00
100.0	0.00	0.00	100.0	0.0	0.0	0.0	0.00	0.00	0.00
200.0	0.00	0.00	200.0	0.0	0.0	0.0	0.00	0.00	0.00
300.0	0.00	0.00	300.0	0.0	0.0	0.0	0.00	0.00	0.00
Build 3° / 100'									
400.0	0.00	0.00	400.0	0.0	0.0	0.0	0.00	0.00	0.00
500.0	3.00	267.47	500.0	-0.1	-2.6	2.6	3.00	3.00	0.00
600.0	6.00	267.47	599.6	-0.5	-10.5	10.5	3.00	3.00	0.00
700.0	9.00	267.47	698.8	-1.0	-23.5	23.5	3.00	3.00	0.00
800.0	12.00	267.47	797.1	-1.8	-41.7	41.7	3.00	3.00	0.00
900.0	15.00	267.47	894.3	-2.9	-65.0	65.1	3.00	3.00	0.00
EOB @ 17.11° Inc. / 267.47° Azm									
970.2	17.11	267.47	961.8	-3.7	-84.4	84.5	3.00	3.00	0.00
1,000.0	17.11	267.47	990.2	-4.1	-93.2	93.2	0.00	0.00	0.00
1,100.0	17.11	267.47	1,085.8	-5.4	-122.6	122.7	0.00	0.00	0.00
1,200.0	17.11	267.47	1,181.4	-6.7	-151.9	152.1	0.00	0.00	0.00
1,300.0	17.11	267.47	1,277.0	-8.0	-181.3	181.5	0.00	0.00	0.00
1,400.0	17.11	267.47	1,372.6	-9.3	-210.7	210.9	0.00	0.00	0.00
1,500.0	17.11	267.47	1,468.1	-10.6	-240.1	240.3	0.00	0.00	0.00
1,600.0	17.11	267.47	1,563.7	-11.9	-269.5	269.7	0.00	0.00	0.00
1,700.0	17.11	267.47	1,659.3	-13.2	-298.9	299.1	0.00	0.00	0.00
1,800.0	17.11	267.47	1,754.9	-14.5	-328.3	328.6	0.00	0.00	0.00
1,900.0	17.11	267.47	1,850.4	-15.8	-357.7	358.0	0.00	0.00	0.00
2,000.0	17.11	267.47	1,946.0	-17.1	-387.0	387.4	0.00	0.00	0.00
2,100.0	17.11	267.47	2,041.6	-18.4	-416.4	416.8	0.00	0.00	0.00
2,200.0	17.11	267.47	2,137.2	-19.7	-445.8	446.2	0.00	0.00	0.00
2,300.0	17.11	267.47	2,232.7	-21.0	-475.2	475.6	0.00	0.00	0.00
2,400.0	17.11	267.47	2,328.3	-22.3	-504.6	505.0	0.00	0.00	0.00
2,500.0	17.11	267.47	2,423.9	-23.6	-534.0	534.5	0.00	0.00	0.00
2,600.0	17.11	267.47	2,519.5	-24.9	-563.4	563.9	0.00	0.00	0.00
Wasatch									
2,600.6	17.11	267.47	2,520.0	-24.9	-563.5	564.0	0.00	0.00	0.00
2,700.0	17.11	267.47	2,615.0	-26.2	-592.8	593.3	0.00	0.00	0.00
2,800.0	17.11	267.47	2,710.6	-27.5	-622.1	622.7	0.00	0.00	0.00
2,900.0	17.11	267.47	2,806.2	-28.8	-651.5	652.1	0.00	0.00	0.00
3,000.0	17.11	267.47	2,901.8	-30.1	-680.9	681.5	0.00	0.00	0.00
3,100.0	17.11	267.47	2,997.3	-31.4	-710.3	710.9	0.00	0.00	0.00
3,200.0	17.11	267.47	3,092.9	-32.7	-739.7	740.3	0.00	0.00	0.00
3,300.0	17.11	267.47	3,188.5	-34.0	-769.1	769.8	0.00	0.00	0.00
3,400.0	17.11	267.47	3,284.1	-35.3	-798.5	799.2	0.00	0.00	0.00
3,500.0	17.11	267.47	3,379.6	-36.5	-827.9	828.6	0.00	0.00	0.00
3,600.0	17.11	267.47	3,475.2	-37.8	-857.2	858.0	0.00	0.00	0.00
3,700.0	17.11	267.47	3,570.8	-39.1	-886.6	887.4	0.00	0.00	0.00
3,800.0	17.11	267.47	3,666.4	-40.4	-916.0	916.8	0.00	0.00	0.00
3,900.0	17.11	267.47	3,761.9	-41.7	-945.4	946.2	0.00	0.00	0.00
4,000.0	17.11	267.47	3,857.5	-43.0	-974.8	975.7	0.00	0.00	0.00
4,100.0	17.11	267.47	3,953.1	-44.3	-1,004.2	1,005.1	0.00	0.00	0.00
4,200.0	17.11	267.47	4,048.7	-45.6	-1,033.6	1,034.5	0.00	0.00	0.00
4,300.0	17.11	267.47	4,144.2	-46.9	-1,063.0	1,063.9	0.00	0.00	0.00
4,400.0	17.11	267.47	4,239.8	-48.2	-1,092.3	1,093.3	0.00	0.00	0.00
4,500.0	17.11	267.47	4,335.4	-49.5	-1,121.7	1,122.7	0.00	0.00	0.00
4,600.0	17.11	267.47	4,431.0	-50.8	-1,151.1	1,152.1	0.00	0.00	0.00
4,700.0	17.11	267.47	4,526.5	-52.1	-1,180.5	1,181.6	0.00	0.00	0.00

Database:	EDM 5000.1 Single User Db	Local Co-ordinate Reference:	Well BJU G35 FED 13B-35 496 - Slot 13B-35
Company:	Caerus Oil & Gas	TVD Reference:	RKB @ 8194.0usft (H&P#329)
Project:	Garfield County, CO	MD Reference:	RKB @ 8194.0usft (H&P#329)
Site:	NPM G35 496 Pad	North Reference:	True
Well:	BJU G35 FED 13B-35 496	Survey Calculation Method:	Minimum Curvature
Wellbore:	Wellbore #1		
Design:	Design #2		

Planned Survey									
Measured Depth (usft)	Inclination (°)	Azimuth (°)	Vertical Depth (usft)	+N/-S (usft)	+E/-W (usft)	Vertical Section (usft)	Dogleg Rate (°/100usft)	Build Rate (°/100usft)	Turn Rate (°/100usft)
4,800.0	17.11	267.47	4,622.1	-53.4	-1,209.9	1,211.0	0.00	0.00	0.00
4,900.0	17.11	267.47	4,717.7	-54.7	-1,239.3	1,240.4	0.00	0.00	0.00
5,000.0	17.11	267.47	4,813.3	-56.0	-1,268.7	1,269.8	0.00	0.00	0.00
5,100.0	17.11	267.47	4,908.8	-57.3	-1,298.1	1,299.2	0.00	0.00	0.00
5,200.0	17.11	267.47	5,004.4	-58.6	-1,327.5	1,328.6	0.00	0.00	0.00
5,300.0	17.11	267.47	5,100.0	-59.9	-1,356.8	1,358.0	0.00	0.00	0.00
5,400.0	17.11	267.47	5,195.6	-61.2	-1,386.2	1,387.4	0.00	0.00	0.00
5,500.0	17.11	267.47	5,291.1	-62.5	-1,415.6	1,416.9	0.00	0.00	0.00
5,600.0	17.11	267.47	5,386.7	-63.8	-1,445.0	1,446.3	0.00	0.00	0.00
5,700.0	17.11	267.47	5,482.3	-65.1	-1,474.4	1,475.7	0.00	0.00	0.00
Wasatch G									
5,739.4	17.11	267.47	5,520.0	-65.6	-1,486.0	1,487.3	0.00	0.00	0.00
5,800.0	17.11	267.47	5,577.9	-66.4	-1,503.8	1,505.1	0.00	0.00	0.00
5,900.0	17.11	267.47	5,673.4	-67.7	-1,533.2	1,534.5	0.00	0.00	0.00
6,000.0	17.11	267.47	5,769.0	-69.0	-1,562.6	1,563.9	0.00	0.00	0.00
Fort Union									
6,035.6	17.11	267.47	5,803.0	-69.4	-1,573.0	1,574.4	0.00	0.00	0.00
6,100.0	17.11	267.47	5,864.6	-70.3	-1,591.9	1,593.3	0.00	0.00	0.00
6,200.0	17.11	267.47	5,960.2	-71.6	-1,621.3	1,622.8	0.00	0.00	0.00
6,300.0	17.11	267.47	6,055.7	-72.9	-1,650.7	1,652.2	0.00	0.00	0.00
6,400.0	17.11	267.47	6,151.3	-74.2	-1,680.1	1,681.6	0.00	0.00	0.00
6,500.0	17.11	267.47	6,246.9	-75.5	-1,709.5	1,711.0	0.00	0.00	0.00
6,600.0	17.11	267.47	6,342.5	-76.8	-1,738.9	1,740.4	0.00	0.00	0.00
6,700.0	17.11	267.47	6,438.1	-78.1	-1,768.3	1,769.8	0.00	0.00	0.00
6,800.0	17.11	267.47	6,533.6	-79.4	-1,797.7	1,799.2	0.00	0.00	0.00
6,900.0	17.11	267.47	6,629.2	-80.7	-1,827.0	1,828.7	0.00	0.00	0.00
7,000.0	17.11	267.47	6,724.8	-82.0	-1,856.4	1,858.1	0.00	0.00	0.00
7,100.0	17.11	267.47	6,820.4	-83.3	-1,885.8	1,887.5	0.00	0.00	0.00
7,200.0	17.11	267.47	6,915.9	-84.6	-1,915.2	1,916.9	0.00	0.00	0.00
7,300.0	17.11	267.47	7,011.5	-85.9	-1,944.6	1,946.3	0.00	0.00	0.00
7,400.0	17.11	267.47	7,107.1	-87.1	-1,974.0	1,975.7	0.00	0.00	0.00
7,500.0	17.11	267.47	7,202.7	-88.4	-2,003.4	2,005.1	0.00	0.00	0.00
Drop 3° /100'									
7,549.7	17.11	267.47	7,250.2	-89.1	-2,018.0	2,019.8	0.00	0.00	0.00
7,600.0	15.60	267.47	7,298.4	-89.7	-2,032.1	2,033.9	3.00	-3.00	0.00
7,700.0	12.60	267.47	7,395.4	-90.8	-2,056.5	2,058.3	3.00	-3.00	0.00
7,800.0	9.60	267.47	7,493.5	-91.6	-2,075.7	2,077.5	3.00	-3.00	0.00
7,900.0	6.60	267.47	7,592.5	-92.3	-2,089.8	2,091.6	3.00	-3.00	0.00
8,000.0	3.60	267.47	7,692.1	-92.7	-2,098.6	2,100.5	3.00	-3.00	0.00
8,100.0	0.60	267.47	7,792.0	-92.8	-2,102.3	2,104.2	3.00	-3.00	0.00
EOD @ Vertical / Build 1.5° / 100' - Ohio Creek - TOG									
8,120.0	0.00	0.00	7,812.0	-92.8	-2,102.4	2,104.3	3.00	-3.00	0.00
8,200.0	1.20	250.00	7,892.0	-93.1	-2,103.2	2,105.1	1.50	1.50	0.00
EOB @ 1.54° Inc. / 250.00° Azm									
8,222.4	1.54	250.00	7,914.4	-93.3	-2,103.7	2,105.6	1.50	1.50	0.00
8,300.0	1.54	250.00	7,992.0	-94.0	-2,105.7	2,107.6	0.00	0.00	0.00
Williams Fork									
8,369.0	1.54	250.00	8,061.0	-94.6	-2,107.4	2,109.3	0.00	0.00	0.00
8,400.0	1.54	250.00	8,091.9	-94.9	-2,108.2	2,110.1	0.00	0.00	0.00
8,500.0	1.54	250.00	8,191.9	-95.8	-2,110.7	2,112.7	0.00	0.00	0.00
8,600.0	1.54	250.00	8,291.9	-96.8	-2,113.2	2,115.3	0.00	0.00	0.00
8,700.0	1.54	250.00	8,391.8	-97.7	-2,115.7	2,117.8	0.00	0.00	0.00
8,800.0	1.54	250.00	8,491.8	-98.6	-2,118.3	2,120.4	0.00	0.00	0.00

Database:	EDM 5000.1 Single User Db	Local Co-ordinate Reference:	Well BJU G35 FED 13B-35 496 - Slot 13B-35
Company:	Caerus Oil & Gas	TVD Reference:	RKB @ 8194.0usft (H&P#329)
Project:	Garfield County, CO	MD Reference:	RKB @ 8194.0usft (H&P#329)
Site:	NPM G35 496 Pad	North Reference:	True
Well:	BJU G35 FED 13B-35 496	Survey Calculation Method:	Minimum Curvature
Wellbore:	Wellbore #1		
Design:	Design #2		

Planned Survey										
Measured Depth (usft)	Inclination (°)	Azimuth (°)	Vertical Depth (usft)	+N/-S (usft)	+E/-W (usft)	Vertical Section (usft)	Dogleg Rate (°/100usft)	Build Rate (°/100usft)	Turn Rate (°/100usft)	
8,900.0	1.54	250.00	8,591.8	-99.5	-2,120.8	2,123.0	0.00	0.00	0.00	
9,000.0	1.54	250.00	8,691.7	-100.4	-2,123.3	2,125.5	0.00	0.00	0.00	
9,100.0	1.54	250.00	8,791.7	-101.3	-2,125.8	2,128.1	0.00	0.00	0.00	
9,200.0	1.54	250.00	8,891.7	-102.3	-2,128.3	2,130.7	0.00	0.00	0.00	
9,300.0	1.54	250.00	8,991.6	-103.2	-2,130.9	2,133.3	0.00	0.00	0.00	
9,400.0	1.54	250.00	9,091.6	-104.1	-2,133.4	2,135.8	0.00	0.00	0.00	
9,500.0	1.54	250.00	9,191.5	-105.0	-2,135.9	2,138.4	0.00	0.00	0.00	
9,600.0	1.54	250.00	9,291.5	-105.9	-2,138.4	2,141.0	0.00	0.00	0.00	
9,700.0	1.54	250.00	9,391.5	-106.8	-2,140.9	2,143.5	0.00	0.00	0.00	
9,800.0	1.54	250.00	9,491.4	-107.8	-2,143.5	2,146.1	0.00	0.00	0.00	
9,900.0	1.54	250.00	9,591.4	-108.7	-2,146.0	2,148.7	0.00	0.00	0.00	
10,000.0	1.54	250.00	9,691.4	-109.6	-2,148.5	2,151.2	0.00	0.00	0.00	
10,100.0	1.54	250.00	9,791.3	-110.5	-2,151.0	2,153.8	0.00	0.00	0.00	
10,200.0	1.54	250.00	9,891.3	-111.4	-2,153.5	2,156.4	0.00	0.00	0.00	
10,300.0	1.54	250.00	9,991.3	-112.3	-2,156.1	2,158.9	0.00	0.00	0.00	
10,400.0	1.54	250.00	10,091.2	-113.3	-2,158.6	2,161.5	0.00	0.00	0.00	
10,500.0	1.54	250.00	10,191.2	-114.2	-2,161.1	2,164.1	0.00	0.00	0.00	
10,600.0	1.54	250.00	10,291.2	-115.1	-2,163.6	2,166.6	0.00	0.00	0.00	
10,700.0	1.54	250.00	10,391.1	-116.0	-2,166.1	2,169.2	0.00	0.00	0.00	
10,800.0	1.54	250.00	10,491.1	-116.9	-2,168.7	2,171.8	0.00	0.00	0.00	
10,900.0	1.54	250.00	10,591.0	-117.8	-2,171.2	2,174.4	0.00	0.00	0.00	
11,000.0	1.54	250.00	10,691.0	-118.8	-2,173.7	2,176.9	0.00	0.00	0.00	
11,100.0	1.54	250.00	10,791.0	-119.7	-2,176.2	2,179.5	0.00	0.00	0.00	
Cameo										
11,104.0	1.54	250.00	10,795.0	-119.7	-2,176.3	2,179.6	0.00	0.00	0.00	
11,200.0	1.54	250.00	10,890.9	-120.6	-2,178.7	2,182.1	0.00	0.00	0.00	
11,300.0	1.54	250.00	10,990.9	-121.5	-2,181.2	2,184.6	0.00	0.00	0.00	
11,400.0	1.54	250.00	11,090.9	-122.4	-2,183.8	2,187.2	0.00	0.00	0.00	
11,500.0	1.54	250.00	11,190.8	-123.4	-2,186.3	2,189.8	0.00	0.00	0.00	
11,600.0	1.54	250.00	11,290.8	-124.3	-2,188.8	2,192.3	0.00	0.00	0.00	
11,700.0	1.54	250.00	11,390.8	-125.2	-2,191.3	2,194.9	0.00	0.00	0.00	
Rollins										
11,700.2	1.54	250.00	11,391.0	-125.2	-2,191.3	2,194.9	0.00	0.00	0.00	
11,800.0	1.54	250.00	11,490.7	-126.1	-2,193.8	2,197.5	0.00	0.00	0.00	
TD @ 11900.3' MD / 11591.0' TVD										
11,900.3	1.54	250.00	11,591.0	-127.0	-2,196.4	2,200.0	0.00	0.00	0.00	

Design Targets										
Target Name	Dip Angle (°)	Dip Dir. (°)	TVD (usft)	+N/-S (usft)	+E/-W (usft)	Northing (usft)	Easting (usft)	Latitude	Longitude	
13B-35 - OHCR	0.00	0.00	7,812.0	-92.8	-2,102.4	14,415,199.69	2,444,907.43	39.660396	-108.141749	
- plan hits target center										
- Point										
13B-35 - PBHL	0.00	0.00	11,591.0	-127.0	-2,196.4	14,415,162.50	2,444,814.60	39.660302	-108.142082	
- plan hits target center										
- Ellipse (radii L100.0 W50.0 on 250.00 azi)										

Database:	EDM 5000.1 Single User Db	Local Co-ordinate Reference:	Well BJU G35 FED 13B-35 496 - Slot 13B-35
Company:	Caerus Oil & Gas	TVD Reference:	RKB @ 8194.0usft (H&P#329)
Project:	Garfield County, CO	MD Reference:	RKB @ 8194.0usft (H&P#329)
Site:	NPM G35 496 Pad	North Reference:	True
Well:	BJU G35 FED 13B-35 496	Survey Calculation Method:	Minimum Curvature
Wellbore:	Wellbore #1		
Design:	Design #2		

Formations						
Measured Depth (usft)	Vertical Depth (usft)	Name	Lithology	Dip (°)	Dip Direction (°)	
2,600.6	2,520.0	Wasatch				
5,739.4	5,520.0	Wasatch G				
6,035.6	5,803.0	Fort Union				
8,120.0	7,812.0	Ohio Creek				
8,120.0	7,812.0	TOG				
8,369.0	8,061.0	Williams Fork				
11,104.0	10,795.0	Cameo				
11,700.2	11,391.0	Rollins				

Plan Annotations					
Measured Depth (usft)	Vertical Depth (usft)	Local Coordinates			
		+N/-S (usft)	+E/-W (usft)	Comment	
400.0	400.0	0.0	0.0	Build 3° / 100'	
970.2	961.8	-3.7	-84.4	EOB @ 17.11° Inc. / 267.47° Azm	
7,549.7	7,250.2	-89.1	-2,018.0	Drop 3° / 100'	
8,120.0	7,812.0	-92.8	-2,102.4	EOD @ Vertical / Build 1.5° / 100'	
8,222.4	7,914.4	-93.3	-2,103.7	EOB @ 1.54° Inc. / 250.00° Azm	
11,900.3	11,591.0	-127.0	-2,196.4	TD @ 11900.3' MD / 11591.0' TVD	