

Project: Garfield County, CO  
 Site: NPM G35 496 Pad  
 Well: BJU G35 FED 13D-35 496  
 Wellbore: Wellbore #1  
 Design: Design #2  
 Latitude: 39.660491  
 Longitude: -108.134158  
 Ground Level: 8164.0  
 RKB @ 8194.0usft (H&P#329)

FORMATION TOP DETAILS			
TVDPath	MDPath	Formation	
2498.0	2560.7	Wasatch	
5498.0	5656.9	Wasatch G	
5498.0	5963.4	Fort Union	
7793.0	8015.2	Ohio Creek	
7793.0	8015.2	TOG	
8045.0	8267.3	Williams Fork	
10767.0	10990.3	Cameo	
11363.0	11586.5	Rollins	

#### REFERENCE INFORMATION

Co-ordinate (N/E) Reference: Well BJU G35 FED 13D-35 496 - Slot 13D-35, True North  
 Vertical (TVD) Reference: RKB @ 8194.0usft (H&P#329)  
 Section (VS) Reference: Slot - 13D-35(0.0N, 0.0E)  
 Measured Depth Reference: RKB @ 8194.0usft (H&P#329)  
 Calculation Method: Minimum Curvature

#### WELL DETAILS: BJU G35 FED 13D-35 496

	8164.0				
+N/-S	+E/-W	Northing	Easting	Latitude	Longitude
0.0	0.0	14415302.50	2447043.10	39.660491	-108.134158

#### PROJECT DETAILS: Garfield County, CO

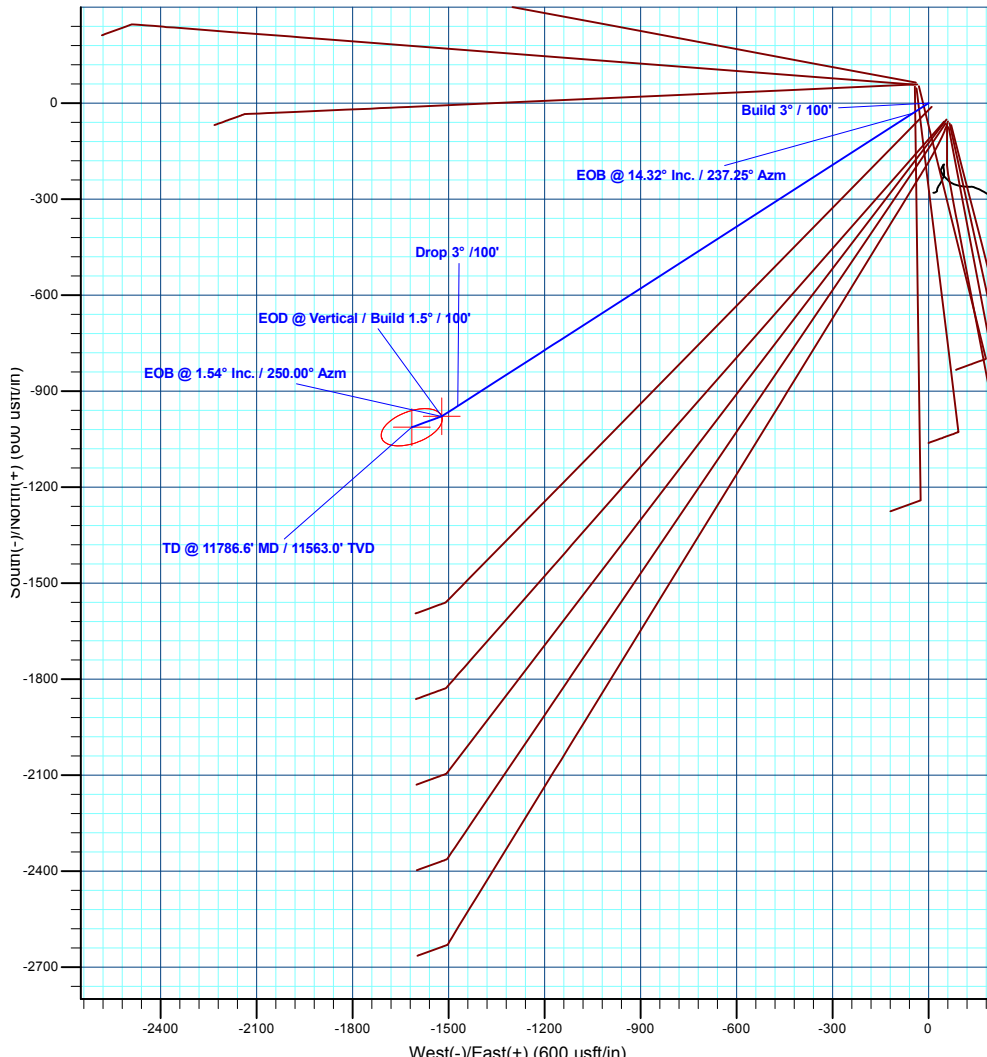
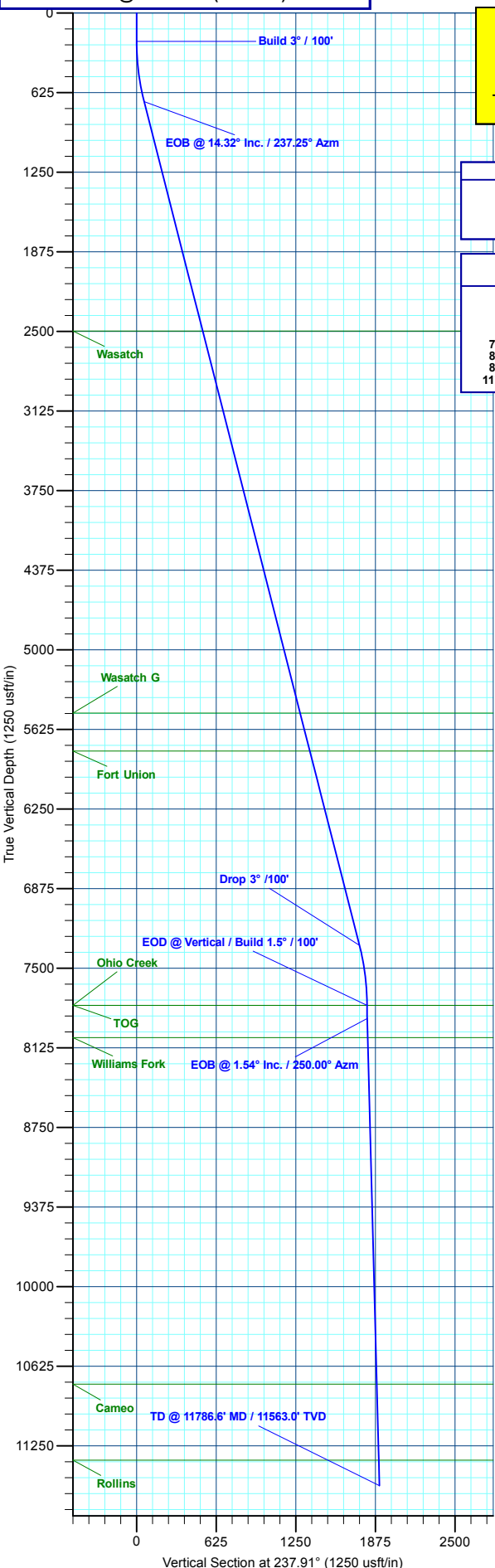
Geodetic System: Universal Transverse Mercator (US Survey Feet)  
 Datum: NAD 1927 - Western US  
 Ellipsoid: Clarke 1866  
 Zone: Zone 12N (114 W to 108 W)  
 System Datum: Mean Sea Level

#### DESIGN TARGET DETAILS

Name	TVD	+N/-S	+E/-W	Northing	Easting	Latitude	Longitude
13D-35 - OHCR	7793.0	-978.8	-1521.5	14414275.59	2445553.63	39.657805	-108.139560
13D-35 - PBHL	11563.0	-1013.0	-1615.5	14414238.40	2445460.80	39.657711	-108.139894

#### SECTION DETAILS

MD	Inc	Azi	TVD	+N/-S	+E/-W	Dleg	TFace	VSeet	Annotation
0.0	0.00	0.00	0.0	0.0	0.0	0.00	0.00	0.0	
225.0	0.00	0.00	225.0	0.0	0.0	0.00	0.00	0.0	Build 3° / 100'
702.3	14.32	237.25	697.3	-32.1	-49.9	3.00	237.25	59.3	EOB @ 14.32° Inc. / 237.25° Azm
7538.0	14.32	237.25	7320.7	-946.7	-1471.6	0.00	0.00	1749.7	Drop 3° / 100'
8015.2	0.00	0.00	7793.0	-978.8	-1521.5	3.00	180.00	1809.0	EOD @ Vertical / Build 1.5° / 100'
8117.9	1.54	250.00	7895.7	-979.3	-1522.8	1.50	250.00	1810.4	EOB @ 1.54° Inc. / 250.00° Azm
11786.6	1.54	250.00	11563.0	-1013.0	-1615.5	0.00	0.00	1906.8	TD @ 11786.6° MD / 11563.0° TVD



Plan: Design #2 (BJU G35 FED 13D-35 496/Wellbore #1)

Created By: Will Jircik Date: 12:01, June 07 2021



## **Caerus Oil & Gas**

**Garfield County, CO**

**NPM G35 496 Pad**

**BJU G35 FED 13D-35 496 - Slot 13D-35**

**Wellbore #1**

**Plan: Design #2**

## **KLX Well Planning Report**

**07 June, 2021**



<b>Database:</b>	EDM 5000.1 Single User Db	<b>Local Co-ordinate Reference:</b>	Well BJU G35 FED 13D-35 496 - Slot 13D-35
<b>Company:</b>	Caerus Oil & Gas	<b>TVD Reference:</b>	RKB @ 8194.0usft (H&P#329)
<b>Project:</b>	Garfield County, CO	<b>MD Reference:</b>	RKB @ 8194.0usft (H&P#329)
<b>Site:</b>	NPM G35 496 Pad	<b>North Reference:</b>	True
<b>Well:</b>	BJU G35 FED 13D-35 496	<b>Survey Calculation Method:</b>	Minimum Curvature
<b>Wellbore:</b>	Wellbore #1		
<b>Design:</b>	Design #2		

<b>Project</b>	Garfield County, CO		
<b>Map System:</b>	Universal Transverse Mercator (US Survey Fee	<b>System Datum:</b>	Mean Sea Level
<b>Geo Datum:</b>	NAD 1927 - Western US		
<b>Map Zone:</b>	Zone 12N (114 W to 108 W)		

Site		NPM G35 496 Pad			
Site Position:		Northing:	14,415,365.20 usft	Latitude:	39.660667
From:	Map	Easting:	2,447,000.80 usft	Longitude:	-108.134301
Position Uncertainty:	0.0 usft	Slot Radius:	13-3/16 "	Grid Convergence:	1.83 °

Well	BJU G35 FED 13D-35 496 - Slot 13D-35					
Well Position	+N/-S	-64.0 usft	Northing:	14,415,302.50 usft	Latitude:	39.660491
	+E/-W	40.3 usft	Easting:	2,447,043.10 usft	Longitude:	-108.134158
Position Uncertainty		0.0 usft	Wellhead Elevation:		Ground Level:	8,164.0 usft

<b>Wellbore</b>	Wellbore #1				
<b>Magnetics</b>	<b>Model Name</b>	<b>Sample Date</b>	<b>Declination (°)</b>	<b>Dip Angle (°)</b>	<b>Field Strength (nT)</b>
	HDGM2020	12/11/2019	9.48	65.85	51,253.00000000

<b>Design</b>	Design #2			
<b>Audit Notes:</b>				
<b>Version:</b>	<b>Phase:</b>	PLAN	<b>Tie On Depth:</b>	0.0
<b>Vertical Section:</b>	<b>Depth From (TVD) (usft)</b>	<b>+N/-S (usft)</b>	<b>+E/-W (usft)</b>	<b>Direction (°)</b>
	0.0	0.0	0.0	237.91

<b>Plan Sections</b>										
Measured Depth (usft)	Inclination (°)	Azimuth (°)	Vertical Depth (usft)	+N/-S (usft)	+E/-W (usft)	Dogleg Rate (°/100usft)	Build Rate (°/100usft)	Turn Rate (°/100usft)	TFO (°)	Target
0.0	0.00	0.00	0.0	0.0	0.0	0.00	0.00	0.00	0.00	
225.0	0.00	0.00	225.0	0.0	0.0	0.00	0.00	0.00	0.00	
702.3	14.32	237.25	697.3	-32.1	-49.9	3.00	3.00	0.00	237.25	
7,538.0	14.32	237.25	7,320.7	-946.7	-1,471.6	0.00	0.00	0.00	0.00	
8,015.2	0.00	0.00	7,793.0	-978.8	-1,521.5	3.00	-3.00	0.00	180.00	13D-35 - OHCR
8,117.9	1.54	250.00	7,895.7	-979.3	-1,522.8	1.50	1.50	-107.12	250.00	
11,786.6	1.54	250.00	11,563.0	-1,013.0	-1,615.5	0.00	0.00	0.00	0.00	13D-35 - PBHL

<b>Database:</b>	EDM 5000.1 Single User Db	<b>Local Co-ordinate Reference:</b>	Well BJU G35 FED 13D-35 496 - Slot 13D-35
<b>Company:</b>	Caerus Oil & Gas	<b>TVD Reference:</b>	RKB @ 8194.0usft (H&P#329)
<b>Project:</b>	Garfield County, CO	<b>MD Reference:</b>	RKB @ 8194.0usft (H&P#329)
<b>Site:</b>	NPM G35 496 Pad	<b>North Reference:</b>	True
<b>Well:</b>	BJU G35 FED 13D-35 496	<b>Survey Calculation Method:</b>	Minimum Curvature
<b>Wellbore:</b>	Wellbore #1		
<b>Design:</b>	Design #2		

Planned Survey									
Measured Depth (usft)	Inclination (°)	Azimuth (°)	Vertical Depth (usft)	+N/-S (usft)	+E/-W (usft)	Vertical Section (usft)	Dogleg Rate (°/100usft)	Build Rate (°/100usft)	Turn Rate (°/100usft)
0.0	0.00	0.00	0.0	0.0	0.0	0.0	0.00	0.00	0.00
100.0	0.00	0.00	100.0	0.0	0.0	0.0	0.00	0.00	0.00
200.0	0.00	0.00	200.0	0.0	0.0	0.0	0.00	0.00	0.00
<b>Build 3° / 100'</b>									
225.0	0.00	0.00	225.0	0.0	0.0	0.0	0.00	0.00	0.00
300.0	2.25	237.25	300.0	-0.8	-1.2	1.5	3.00	3.00	0.00
400.0	5.25	237.25	399.8	-4.3	-6.7	8.0	3.00	3.00	0.00
500.0	8.25	237.25	499.1	-10.7	-16.6	19.8	3.00	3.00	0.00
600.0	11.25	237.25	597.6	-19.9	-30.9	36.7	3.00	3.00	0.00
<b>EOB @ 14.32° Inc. / 237.25° Azm</b>									
702.3	14.32	237.25	697.3	-32.1	-49.9	59.3	3.00	3.00	0.00
800.0	14.32	237.25	792.0	-45.2	-70.2	83.5	0.00	0.00	0.00
900.0	14.32	237.25	888.9	-58.6	-91.0	108.2	0.00	0.00	0.00
1,000.0	14.32	237.25	985.8	-71.9	-111.8	132.9	0.00	0.00	0.00
1,100.0	14.32	237.25	1,082.7	-85.3	-132.6	157.7	0.00	0.00	0.00
1,200.0	14.32	237.25	1,179.6	-98.7	-153.4	182.4	0.00	0.00	0.00
1,300.0	14.32	237.25	1,276.5	-112.1	-174.2	207.1	0.00	0.00	0.00
1,400.0	14.32	237.25	1,373.4	-125.5	-195.0	231.9	0.00	0.00	0.00
1,500.0	14.32	237.25	1,470.3	-138.8	-215.8	256.6	0.00	0.00	0.00
1,600.0	14.32	237.25	1,567.2	-152.2	-236.6	281.3	0.00	0.00	0.00
1,700.0	14.32	237.25	1,664.1	-165.6	-257.4	306.0	0.00	0.00	0.00
1,800.0	14.32	237.25	1,760.9	-179.0	-278.2	330.8	0.00	0.00	0.00
1,900.0	14.32	237.25	1,857.8	-192.4	-299.0	355.5	0.00	0.00	0.00
2,000.0	14.32	237.25	1,954.7	-205.7	-319.8	380.2	0.00	0.00	0.00
2,100.0	14.32	237.25	2,051.6	-219.1	-340.6	405.0	0.00	0.00	0.00
2,200.0	14.32	237.25	2,148.5	-232.5	-361.4	429.7	0.00	0.00	0.00
2,300.0	14.32	237.25	2,245.4	-245.9	-382.2	454.4	0.00	0.00	0.00
2,400.0	14.32	237.25	2,342.3	-259.3	-403.0	479.2	0.00	0.00	0.00
2,500.0	14.32	237.25	2,439.2	-272.6	-423.8	503.9	0.00	0.00	0.00
<b>Wasatch</b>									
2,560.7	14.32	237.25	2,498.0	-280.8	-436.4	518.9	0.00	0.00	0.00
2,600.0	14.32	237.25	2,536.1	-286.0	-444.6	528.6	0.00	0.00	0.00
2,700.0	14.32	237.25	2,633.0	-299.4	-465.4	553.3	0.00	0.00	0.00
2,800.0	14.32	237.25	2,729.9	-312.8	-486.2	578.1	0.00	0.00	0.00
2,900.0	14.32	237.25	2,826.8	-326.2	-507.0	602.8	0.00	0.00	0.00
3,000.0	14.32	237.25	2,923.7	-339.5	-527.8	627.5	0.00	0.00	0.00
3,100.0	14.32	237.25	3,020.6	-352.9	-548.6	652.3	0.00	0.00	0.00
3,200.0	14.32	237.25	3,117.5	-366.3	-569.4	677.0	0.00	0.00	0.00
3,300.0	14.32	237.25	3,214.4	-379.7	-590.2	701.7	0.00	0.00	0.00
3,400.0	14.32	237.25	3,311.2	-393.1	-611.0	726.4	0.00	0.00	0.00
3,500.0	14.32	237.25	3,408.1	-406.4	-631.8	751.2	0.00	0.00	0.00
3,600.0	14.32	237.25	3,505.0	-419.8	-652.6	775.9	0.00	0.00	0.00
3,700.0	14.32	237.25	3,601.9	-433.2	-673.4	800.6	0.00	0.00	0.00
3,800.0	14.32	237.25	3,698.8	-446.6	-694.2	825.4	0.00	0.00	0.00
3,900.0	14.32	237.25	3,795.7	-460.0	-715.0	850.1	0.00	0.00	0.00
4,000.0	14.32	237.25	3,892.6	-473.3	-735.8	874.8	0.00	0.00	0.00
4,100.0	14.32	237.25	3,989.5	-486.7	-756.6	899.5	0.00	0.00	0.00
4,200.0	14.32	237.25	4,086.4	-500.1	-777.4	924.3	0.00	0.00	0.00
4,300.0	14.32	237.25	4,183.3	-513.5	-798.2	949.0	0.00	0.00	0.00
4,400.0	14.32	237.25	4,280.2	-526.9	-819.0	973.7	0.00	0.00	0.00
4,500.0	14.32	237.25	4,377.1	-540.2	-839.8	998.5	0.00	0.00	0.00
4,600.0	14.32	237.25	4,474.0	-553.6	-860.6	1,023.2	0.00	0.00	0.00
4,700.0	14.32	237.25	4,570.9	-567.0	-881.4	1,047.9	0.00	0.00	0.00

<b>Database:</b>	EDM 5000.1 Single User Db	<b>Local Co-ordinate Reference:</b>	Well BJU G35 FED 13D-35 496 - Slot 13D-35
<b>Company:</b>	Caerus Oil & Gas	<b>TVD Reference:</b>	RKB @ 8194.0usft (H&P#329)
<b>Project:</b>	Garfield County, CO	<b>MD Reference:</b>	RKB @ 8194.0usft (H&P#329)
<b>Site:</b>	NPM G35 496 Pad	<b>North Reference:</b>	True
<b>Well:</b>	BJU G35 FED 13D-35 496	<b>Survey Calculation Method:</b>	Minimum Curvature
<b>Wellbore:</b>	Wellbore #1		
<b>Design:</b>	Design #2		

Planned Survey									
Measured Depth (usft)	Inclination (°)	Azimuth (°)	Vertical Depth (usft)	+N/-S (usft)	+E/-W (usft)	Vertical Section (usft)	Dogleg Rate (°/100usft)	Build Rate (°/100usft)	Turn Rate (°/100usft)
4,800.0	14.32	237.25	4,667.8	-580.4	-902.2	1,072.6	0.00	0.00	0.00
4,900.0	14.32	237.25	4,764.7	-593.8	-923.0	1,097.4	0.00	0.00	0.00
5,000.0	14.32	237.25	4,861.5	-607.1	-943.8	1,122.1	0.00	0.00	0.00
5,100.0	14.32	237.25	4,958.4	-620.5	-964.6	1,146.8	0.00	0.00	0.00
5,200.0	14.32	237.25	5,055.3	-633.9	-985.4	1,171.6	0.00	0.00	0.00
5,300.0	14.32	237.25	5,152.2	-647.3	-1,006.2	1,196.3	0.00	0.00	0.00
5,400.0	14.32	237.25	5,249.1	-660.7	-1,026.9	1,221.0	0.00	0.00	0.00
5,500.0	14.32	237.25	5,346.0	-674.0	-1,047.7	1,245.8	0.00	0.00	0.00
5,600.0	14.32	237.25	5,442.9	-687.4	-1,068.5	1,270.5	0.00	0.00	0.00
<b>Wasatch G</b>									
5,656.9	14.32	237.25	5,498.0	-695.0	-1,080.4	1,284.5	0.00	0.00	0.00
5,700.0	14.32	237.25	5,539.8	-700.8	-1,089.3	1,295.2	0.00	0.00	0.00
5,800.0	14.32	237.25	5,636.7	-714.2	-1,110.1	1,319.9	0.00	0.00	0.00
5,900.0	14.32	237.25	5,733.6	-727.6	-1,130.9	1,344.7	0.00	0.00	0.00
<b>Fort Union</b>									
5,963.4	14.32	237.25	5,795.0	-736.0	-1,144.1	1,360.3	0.00	0.00	0.00
6,000.0	14.32	237.25	5,830.5	-740.9	-1,151.7	1,369.4	0.00	0.00	0.00
6,100.0	14.32	237.25	5,927.4	-754.3	-1,172.5	1,394.1	0.00	0.00	0.00
6,200.0	14.32	237.25	6,024.3	-767.7	-1,193.3	1,418.9	0.00	0.00	0.00
6,300.0	14.32	237.25	6,121.2	-781.1	-1,214.1	1,443.6	0.00	0.00	0.00
6,400.0	14.32	237.25	6,218.1	-794.5	-1,234.9	1,468.3	0.00	0.00	0.00
6,500.0	14.32	237.25	6,315.0	-807.8	-1,255.7	1,493.0	0.00	0.00	0.00
6,600.0	14.32	237.25	6,411.8	-821.2	-1,276.5	1,517.8	0.00	0.00	0.00
6,700.0	14.32	237.25	6,508.7	-834.6	-1,297.3	1,542.5	0.00	0.00	0.00
6,800.0	14.32	237.25	6,605.6	-848.0	-1,318.1	1,567.2	0.00	0.00	0.00
6,900.0	14.32	237.25	6,702.5	-861.4	-1,338.9	1,592.0	0.00	0.00	0.00
7,000.0	14.32	237.25	6,799.4	-874.7	-1,359.7	1,616.7	0.00	0.00	0.00
7,100.0	14.32	237.25	6,896.3	-888.1	-1,380.5	1,641.4	0.00	0.00	0.00
7,200.0	14.32	237.25	6,993.2	-901.5	-1,401.3	1,666.1	0.00	0.00	0.00
7,300.0	14.32	237.25	7,090.1	-914.9	-1,422.1	1,690.9	0.00	0.00	0.00
7,400.0	14.32	237.25	7,187.0	-928.3	-1,442.9	1,715.6	0.00	0.00	0.00
7,500.0	14.32	237.25	7,283.9	-941.6	-1,463.7	1,740.3	0.00	0.00	0.00
<b>Drop 3° /100'</b>									
7,538.0	14.32	237.25	7,320.7	-946.7	-1,471.6	1,749.7	0.00	0.00	0.00
7,600.0	12.46	237.25	7,381.0	-954.5	-1,483.7	1,764.1	3.00	-3.00	0.00
7,700.0	9.46	237.25	7,479.2	-964.8	-1,499.7	1,783.1	3.00	-3.00	0.00
7,800.0	6.46	237.25	7,578.2	-972.3	-1,511.3	1,796.9	3.00	-3.00	0.00
7,900.0	3.46	237.25	7,677.8	-976.9	-1,518.6	1,805.6	3.00	-3.00	0.00
8,000.0	0.46	237.25	7,777.8	-978.8	-1,521.5	1,809.0	3.00	-3.00	0.00
<b>EOD @ Vertical / Build 1.5° / 100' - Ohio Creek - TOG</b>									
8,015.2	0.00	0.00	7,793.0	-978.8	-1,521.5	1,809.0	3.00	-3.00	0.00
8,100.0	1.27	250.00	7,877.8	-979.1	-1,522.4	1,810.0	1.50	1.50	0.00
<b>EOB @ 1.54° Inc. / 250.00° Azm</b>									
8,117.9	1.54	250.00	7,895.7	-979.3	-1,522.8	1,810.4	1.50	1.50	0.00
8,200.0	1.54	250.00	7,977.7	-980.0	-1,524.9	1,812.5	0.00	0.00	0.00
<b>Williams Fork</b>									
8,267.3	1.54	250.00	8,045.0	-980.7	-1,526.6	1,814.3	0.00	0.00	0.00
8,300.0	1.54	250.00	8,077.7	-981.0	-1,527.4	1,815.2	0.00	0.00	0.00
8,400.0	1.54	250.00	8,177.6	-981.9	-1,529.9	1,817.8	0.00	0.00	0.00
8,500.0	1.54	250.00	8,277.6	-982.8	-1,532.5	1,820.4	0.00	0.00	0.00
8,600.0	1.54	250.00	8,377.6	-983.7	-1,535.0	1,823.1	0.00	0.00	0.00
8,700.0	1.54	250.00	8,477.5	-984.6	-1,537.5	1,825.7	0.00	0.00	0.00
8,800.0	1.54	250.00	8,577.5	-985.6	-1,540.0	1,828.3	0.00	0.00	0.00

<b>Database:</b>	EDM 5000.1 Single User Db	<b>Local Co-ordinate Reference:</b>	Well BJU G35 FED 13D-35 496 - Slot 13D-35
<b>Company:</b>	Caerus Oil & Gas	<b>TVD Reference:</b>	RKB @ 8194.0usft (H&P#329)
<b>Project:</b>	Garfield County, CO	<b>MD Reference:</b>	RKB @ 8194.0usft (H&P#329)
<b>Site:</b>	NPM G35 496 Pad	<b>North Reference:</b>	True
<b>Well:</b>	BJU G35 FED 13D-35 496	<b>Survey Calculation Method:</b>	Minimum Curvature
<b>Wellbore:</b>	Wellbore #1		
<b>Design:</b>	Design #2		

## Planned Survey

Measured Depth (usft)	Inclination (°)	Azimuth (°)	Vertical Depth (usft)	+N/-S (usft)	+E/-W (usft)	Vertical Section (usft)	Dogleg Rate (°/100usft)	Build Rate (°/100usft)	Turn Rate (°/100usft)
8,900.0	1.54	250.00	8,677.5	-986.5	-1,542.6	1,830.9	0.00	0.00	0.00
9,000.0	1.54	250.00	8,777.4	-987.4	-1,545.1	1,833.6	0.00	0.00	0.00
9,100.0	1.54	250.00	8,877.4	-988.3	-1,547.6	1,836.2	0.00	0.00	0.00
9,200.0	1.54	250.00	8,977.4	-989.2	-1,550.1	1,838.8	0.00	0.00	0.00
9,300.0	1.54	250.00	9,077.3	-990.2	-1,552.7	1,841.5	0.00	0.00	0.00
9,400.0	1.54	250.00	9,177.3	-991.1	-1,555.2	1,844.1	0.00	0.00	0.00
9,500.0	1.54	250.00	9,277.2	-992.0	-1,557.7	1,846.7	0.00	0.00	0.00
9,600.0	1.54	250.00	9,377.2	-992.9	-1,560.2	1,849.3	0.00	0.00	0.00
9,700.0	1.54	250.00	9,477.2	-993.8	-1,562.8	1,852.0	0.00	0.00	0.00
9,800.0	1.54	250.00	9,577.1	-994.8	-1,565.3	1,854.6	0.00	0.00	0.00
9,900.0	1.54	250.00	9,677.1	-995.7	-1,567.8	1,857.2	0.00	0.00	0.00
10,000.0	1.54	250.00	9,777.1	-996.6	-1,570.3	1,859.9	0.00	0.00	0.00
10,100.0	1.54	250.00	9,877.0	-997.5	-1,572.9	1,862.5	0.00	0.00	0.00
10,200.0	1.54	250.00	9,977.0	-998.4	-1,575.4	1,865.1	0.00	0.00	0.00
10,300.0	1.54	250.00	10,077.0	-999.4	-1,577.9	1,867.7	0.00	0.00	0.00
10,400.0	1.54	250.00	10,176.9	-1,000.3	-1,580.5	1,870.4	0.00	0.00	0.00
10,500.0	1.54	250.00	10,276.9	-1,001.2	-1,583.0	1,873.0	0.00	0.00	0.00
10,600.0	1.54	250.00	10,376.9	-1,002.1	-1,585.5	1,875.6	0.00	0.00	0.00
10,700.0	1.54	250.00	10,476.8	-1,003.0	-1,588.0	1,878.3	0.00	0.00	0.00
10,800.0	1.54	250.00	10,576.8	-1,004.0	-1,590.6	1,880.9	0.00	0.00	0.00
10,900.0	1.54	250.00	10,676.7	-1,004.9	-1,593.1	1,883.5	0.00	0.00	0.00
<b>Cameo</b>									
10,990.3	1.54	250.00	10,767.0	-1,005.7	-1,595.4	1,885.9	0.00	0.00	0.00
11,000.0	1.54	250.00	10,776.7	-1,005.8	-1,595.6	1,886.1	0.00	0.00	0.00
11,100.0	1.54	250.00	10,876.7	-1,006.7	-1,598.1	1,888.8	0.00	0.00	0.00
11,200.0	1.54	250.00	10,976.6	-1,007.6	-1,600.7	1,891.4	0.00	0.00	0.00
11,300.0	1.54	250.00	11,076.6	-1,008.6	-1,603.2	1,894.0	0.00	0.00	0.00
11,400.0	1.54	250.00	11,176.6	-1,009.5	-1,605.7	1,896.7	0.00	0.00	0.00
11,500.0	1.54	250.00	11,276.5	-1,010.4	-1,608.2	1,899.3	0.00	0.00	0.00
<b>Rollins</b>									
11,586.5	1.54	250.00	11,363.0	-1,011.2	-1,610.4	1,901.6	0.00	0.00	0.00
11,600.0	1.54	250.00	11,376.5	-1,011.3	-1,610.8	1,901.9	0.00	0.00	0.00
11,700.0	1.54	250.00	11,476.5	-1,012.2	-1,613.3	1,904.5	0.00	0.00	0.00
<b>TD @ 11786.6' MD / 11563.0' TVD</b>									
11,786.6	1.54	250.00	11,563.0	-1,013.0	-1,615.5	1,906.8	0.00	0.00	0.00

## Design Targets

Target Name	Dip Angle (°)	Dip Dir. (°)	TVD (usft)	+N/-S (usft)	+E/-W (usft)	Northing (usft)	Easting (usft)	Latitude	Longitude
13D-35 - OHCR - hit/miss target - Shape - Point	0.00	0.00	7,793.0	-978.8	-1,521.5	14,414,275.59	2,445,553.63	39.657805	-108.139560
13D-35 - PBHL - plan hits target center - Ellipse (radii L100.0 W50.0 on 250.00 azi)	0.00	0.00	11,563.0	-1,013.0	-1,615.5	14,414,238.40	2,445,460.80	39.657711	-108.139894

<b>Database:</b>	EDM 5000.1 Single User Db	<b>Local Co-ordinate Reference:</b>	Well BJU G35 FED 13D-35 496 - Slot 13D-35
<b>Company:</b>	Caerus Oil & Gas	<b>TVD Reference:</b>	RKB @ 8194.0usft (H&P#329)
<b>Project:</b>	Garfield County, CO	<b>MD Reference:</b>	RKB @ 8194.0usft (H&P#329)
<b>Site:</b>	NPM G35 496 Pad	<b>North Reference:</b>	True
<b>Well:</b>	BJU G35 FED 13D-35 496	<b>Survey Calculation Method:</b>	Minimum Curvature
<b>Wellbore:</b>	Wellbore #1		
<b>Design:</b>	Design #2		

#### Formations

Measured Depth (usft)	Vertical Depth (usft)	Name	Lithology	Dip (°)	Dip Direction (°)
2,560.7	2,498.0	Wasatch			
5,656.9	5,498.0	Wasatch G			
5,963.4	5,795.0	Fort Union			
8,015.2	7,793.0	Ohio Creek			
8,015.2	7,793.0	TOG			
8,267.3	8,045.0	Williams Fork			
10,990.3	10,767.0	Cameo			
11,586.5	11,363.0	Rollins			

#### Plan Annotations

Measured Depth (usft)	Vertical Depth (usft)	Local Coordinates		Comment
		+N/-S (usft)	+E/-W (usft)	
225.0	225.0	0.0	0.0	Build 3° / 100'
702.3	697.3	-32.1	-49.9	EOB @ 14.32° Inc. / 237.25° Azm
7,538.0	7,320.7	-946.7	-1,471.6	Drop 3° / 100'
8,015.2	7,793.0	-978.8	-1,521.5	EOD @ Vertical / Build 1.5° / 100'
8,117.9	7,895.7	-979.3	-1,522.8	EOB @ 1.54° Inc. / 250.00° Azm
11,786.6	11,563.0	-1,013.0	-1,615.5	TD @ 11786.6' MD / 11563.0' TVD