

USGS 7.5 MINUTE SERIES (TOPOGRAPHIC)

Figure 1
SITE LOCATION MAP

Noble Energy, Inc.
Green #2
NWNW Sec. 18, T1S, R67W, 6th PM
Weld County, Colorado

Project # C021-047	API # 05-001-08804	Facility # 203295
Date 6/18/21	Reviewed By EB	Filename 21047T





LEGEND

- WELLHEAD LOCATION
- FORMER FACILITY
- EXTENT OF EXCAVATION

**Figure 2
SITE MAP**

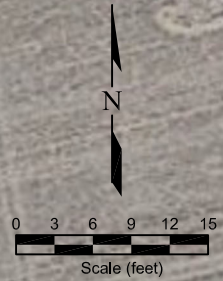
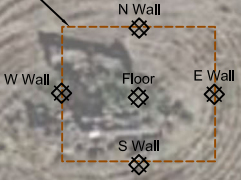
Noble Energy, Inc.
Green #2
 NWNW Sec. 18, T1S, R67W, 6th PM
 Weld County, Colorado

Project No. C021-047	API # 05-001-08804	Facility # 203295
Date 6/18/21	Reviewed By EB	Filename 21047Q





EXTENT OF EXCAVATION
10' x 12' x 8' deep



LEGEND

- SOIL SAMPLE LOCATION
- FORMER FACILITY
- EXTENT OF EXCAVATION

05/18/2021		DATE SAMPLED
N Wall @ 6'		SAMPLE ID and DEPTH (ft)
VOC and TPH		LABORATORY ANALYSIS
B	<0.0020	BENZENE (mg/kg)
T	<0.0050	TOLUENE (mg/kg)
E	<0.0050	ETHYLBENZENE (mg/kg)
X	<0.010	TOTAL XYLENES (mg/kg)
1,2,4-TB	<0.0050	1,2,4-TRIMETHYLBENZENE (mg/kg)
1,3,5-TB	<0.0050	1,3,5-TRIMETHYLBENZENE (mg/kg)
N	<0.0038	NAPHTHALENE (mg/kg)
G	<0.5	TPH-GRO (mg/kg)
D	<50	TPH-DRO (mg/kg)
O	<50	TPH-ORO (mg/kg)

05/18/2021		DATE SAMPLED
W Wall @ 3'		SAMPLE ID & DEPTH (ft)
SAR	3.47	SAR (units)
pH	7.93	pH (pH units)
EC	6.92	EC (mmhos/cm)
BORON	0.183	BORON (ppm)

Figure 3
EXTENT OF EXCAVATION WITH SOIL CHEMISTRY
 June 17, 2021
Noble Energy, Inc.
Green #2
 NWNW Sec. 18, T1S, R67W, 6th PM
 Weld County, Colorado

Project No. C021-047	API # 05-001-08804	Facility # 203295
Date 6/18/21	Reviewed By EB	Filename 21047QE





1 – Green #2 wellhead abandonment excavation – looking southeast



2 – Green #2 wellhead in excavation prior to cut and cap; note gray, stained soil



3 – Green #2 wellhead; cutting in process – looking northeast