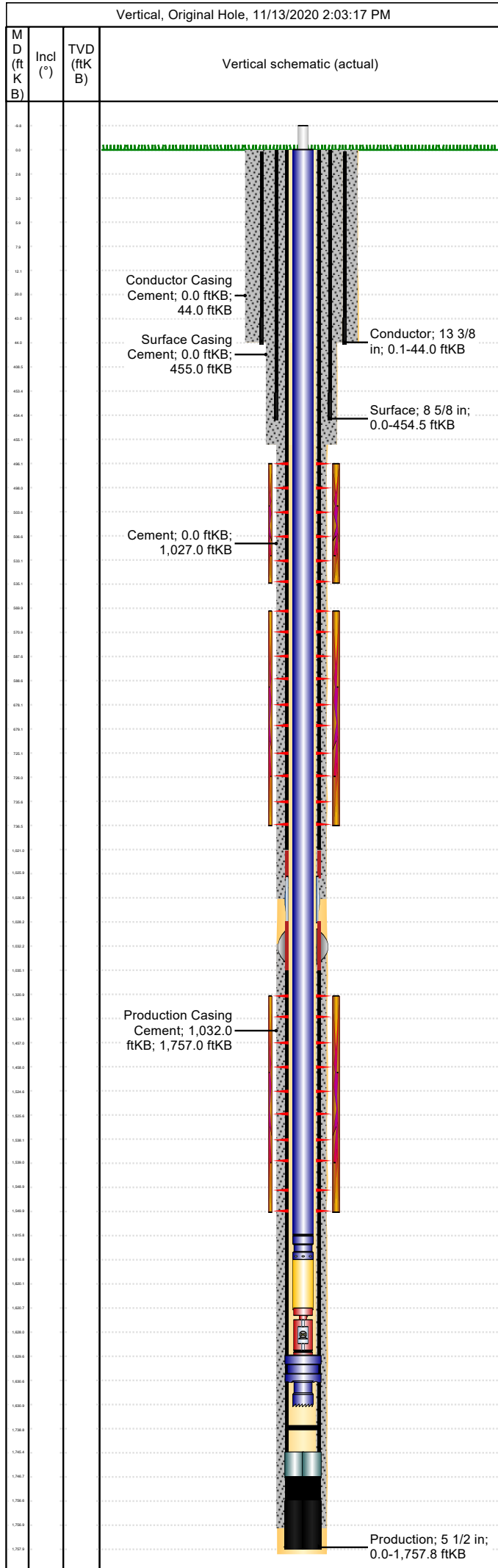


API/UWI 05071096350000	Location T34S-R67W-S03	Field Name Purgatoire River	Permit Number 20083506	State/Province Colorado	Well Configuration Type Vertical
Gr Elev (ft) 7,257.00	Casing Flange Elevation (ft)	KB-Ground Distance (ft) 0.00	KB-Casing Flange Distance (ft)	Spud Date 8/22/2008 11:00	Rig Release Date 8/24/2008 12:00

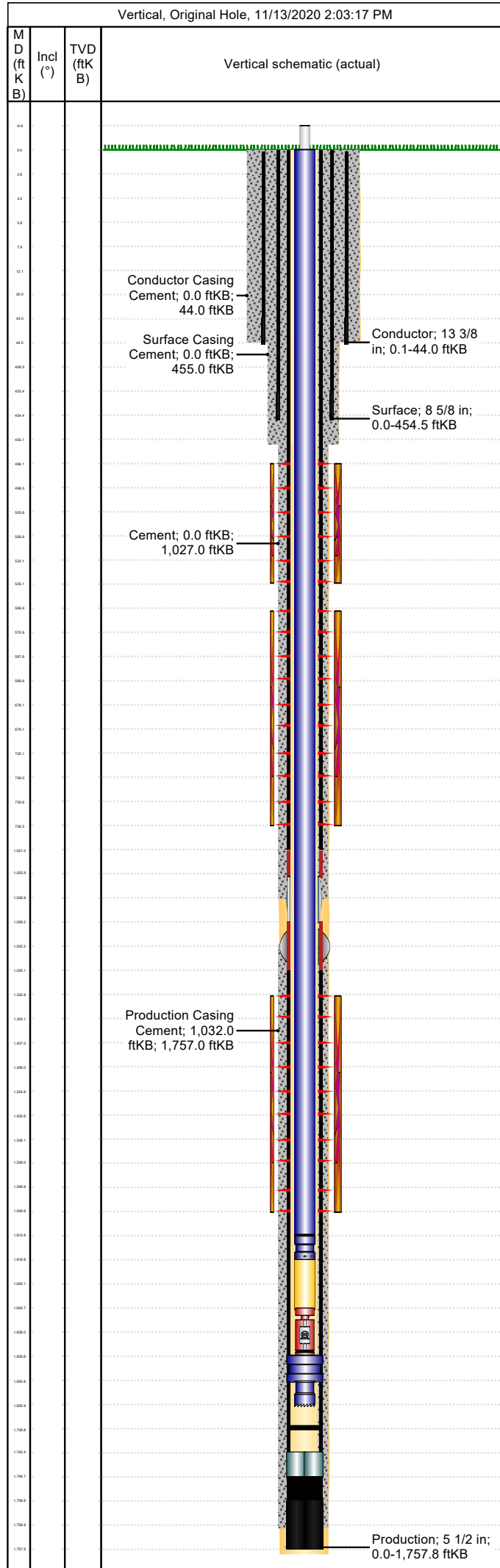


Wellbore									
Wellbore Name			Profile Type			Vertical Section Direction (°)			
Section Des		Size (in)		Act Top (ftKB)		Act Btm (ftKB)			
Kick Offs & Key Depths									
Type		Top Depth (ftKB)			Depth Top (TVD) (ftKB)				
Wellhead									
Type									
Des		Make		Model		SN		WP Top (psi)	
Last Mud Check									
Date	Type	Depth (ftKB)	Dens (lb/gal)	Vis (s/qt)	Gel 10s (lb/100ft²)	Gel 10m (lb/100ft²)	PV (cP)	YP (lb/100ft²)	
Casing									
Casing Description Conductor			Run Date 8/22/2008 12:30		Set Depth (ftKB) 44.0		Wellbore Original Hole		
Centralizers					Scratchers				
Jts	Item Des	OD (in)	ID (in)	Wt (lb/ft)	Grade	Len (ft)	Top (ftKB)	Btm (ftKB)	
1	Below GL	13 3/8	12.72			3.00	0.1	3.1	
1	Casing Joints	13 3/8	12.72	48.00	LS	39.90	3.1	43.0	
1	Shoe	13 3/8	12.72			1.00	43.0	44.0	
Casing Description Surface			Run Date 8/23/2008 13:29		Set Depth (ftKB) 454.5		Wellbore Original Hole		
Centralizers					Scratchers				
Jts	Item Des	OD (in)	ID (in)	Wt (lb/ft)	Grade	Len (ft)	Top (ftKB)	Btm (ftKB)	
1	Below GL	8 5/8	8.10	24.00	J-55	2.50	0.0	2.5	
9	Casing Joints	8 5/8	8.10	24.00	J-55	405.79	2.5	408.3	
1	Float Insert	8 5/8	8.10	24.00	J-55	0.00	408.3	408.3	
1	Casing Joints	8 5/8	8.10	24.00	J-55	45.17	408.3	453.5	
1	Shoe	8 5/8	8.10	24.00	J-55	1.00	453.5	454.5	
Casing Description Production			Run Date 8/24/2008 21:00		Set Depth (ftKB) 1,757.8		Wellbore Original Hole		
Centralizers					Scratchers				
Jts	Item Des	OD (in)	ID (in)	Wt (lb/ft)	Grade	Len (ft)	Top (ftKB)	Btm (ftKB)	
23	Casing Joints	5 1/2	4.95	15.50	J-55	1,020.98	0.0	1,021.0	
1	Pup Joint	5 1/2	4.95	15.50	J-55	5.10	1,021.0	1,026.1	
1	Stage Tool	5 1/2	4.95	15.50	J-55	2.15	1,026.1	1,028.2	
1	Packer	5 1/2	4.95	15.50	J-55	7.00	1,028.2	1,035.2	
16	Casing Joints	5 1/2	4.95	15.50	J-55	710.22	1,035.2	1,745.5	
1	Float Collar	5 1/2	0.00	15.50	J-55	1.25	1,745.5	1,746.7	
1	Casing Joints	5 1/2	0.00	15.50	J-55	9.85	1,746.7	1,756.6	
1	Casing Shoe	5 1/2	0.00	15.50	J-55	1.25	1,756.6	1,757.8	
Cement: <Description?>									
Cementing Start Date			Cementing End Date			Wellbore			
Evaluation Method			Cement Evaluation Results						
Comment									
Cement Stage: <Description?>									
Top Depth (ftKB)		Bottom Depth (ftKB)		Full Return?	Vol Cement	RTOP Plug?		Bottom Plug?	
Initial Pump Rate (bbl/min)		Final Pump Rate (bbl/min)		Avg Pump Rate (bbl/min)		Final Pump Pressure (psi)		Plug Bump Pressure (psi)	
Pipe Reciprocated?		Stroke (ft)		Reciprocation Rate (spm)		Pipe Rotated?		Pipe RPM (rpm)	
Tagged Depth (ftKB)		Tag Method		Depth Plug Drilled Out To (ft)		Drill Out Diameter (in)		Drill Out Date	

Well Name: Apache Canyon 03-15-67

Conductor

API/UWI 05071096350000	Location T34S-R67W-S03	Field Name Purgatoire River	Permit Number 20083506	State/Province Colorado	Well Configuration Type Vertical
Gr Elev (ft) 7,257.00	Casing Flange Elevation (ft)	KB-Ground Distance (ft) 0.00	KB-Casing Flange Distance (ft)	Spud Date 8/22/2008 11:00	Rig Release Date 8/24/2008 12:00



Cement Fluid: <Description?>				
Fluid Type	Fluid Description	Amount (sack)	Class	Volume Pumped (bbl)
Estimated Top (ftKB)	Est Btm (ftKB)	Yield (ft³/sack)	Mix H2O Ratio (gal/sack)	Free Water (%)
Density (lb/gal)	Plastic Viscosity (cP)	Thickening Time (hr)	1st Compressive Strength (psi)	
Cement Fluid Additives				
Add	Type	Conc		

Add	Type	Conc		