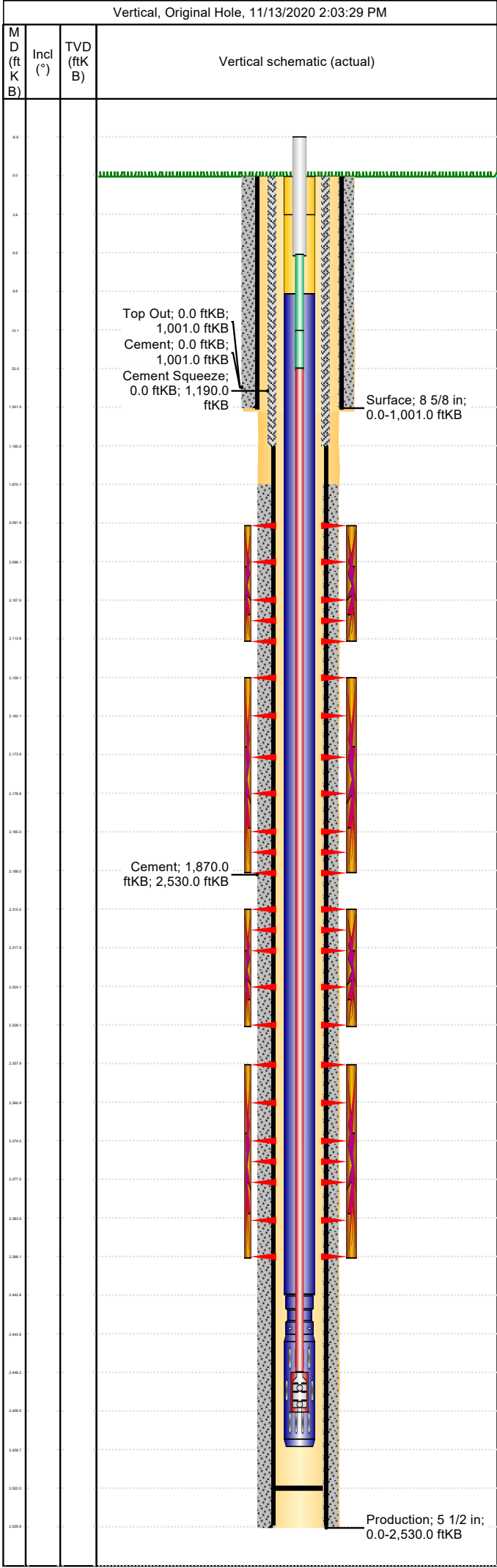


Well Name: Apache Canyon 02-11V

Surface

API/UWI 05071075520000	Location T34S-R68W-S02	Field Name Purgatoire River	Permit Number 2002012	State/Province Colorado	Well Configuration Type Vertical
Gr Elev (ft) 8,325.00	Casing Flange Elevation (ft)	KB-Ground Distance (ft) 0.00	KB-Casing Flange Distance (ft)	Spud Date 2/9/2002 00:00	Rig Release Date 2/11/2002 00:00



<b>Wellbore</b>										
Wellbore Name			Profile Type			Vertical Section Direction (°)				
Section Des		Size (in)		Act Top (ftKB)		Act Btm (ftKB)				
<b>Kick Offs &amp; Key Depths</b>										
Type		Top Depth (ftKB)			Depth Top (TVD) (ftKB)					
<b>Wellhead</b>										
Type										
Des		Make		Model		SN		WP Top (psi)		
<b>Last Mud Check</b>										
Date	Type	Depth (ftKB)	Dens (lb/gal)	Vis (s/qt)	Gel 10s (lb/100ft²)	Gel 10m (lb/100ft²)	PV (cP)	YP (lb/100ft²)		
<b>Casing</b>										
Casing Description Surface			Run Date 2/9/2002 00:00		Set Depth (ftKB) 1,001.0		Wellbore Original Hole			
Centralizers				Scratchers						
Jts	Item Des	OD (in)	ID (in)	Wt (lb/ft)	Grade	Len (ft)	Top (ftKB)	Btm (ftKB)		
	Casing Joints	8 5/8	8.10	24.00	J-55	1,001.00	0.0	1,001.0		
Casing Description Production			Run Date 2/13/2002 00:00		Set Depth (ftKB) 2,530.0		Wellbore Original Hole			
Centralizers				Scratchers						
Jts	Item Des	OD (in)	ID (in)	Wt (lb/ft)	Grade	Len (ft)	Top (ftKB)	Btm (ftKB)		
	Casing Joints	5 1/2	4.95	15.50	J-55	2,530.00	0.0	2,530.0		
<b>Cement: &lt;Description?&gt;</b>										
Cementing Start Date		Cementing End Date			Wellbore					
Evaluation Method		Cement Evaluation Results								
Comment										
<b>Cement Stage: &lt;Description?&gt;</b>										
Top Depth (ftKB)		Bottom Depth (ftKB)		Full Return?		Vol Cement R		Top Plug?		
Initial Pump Rate (bbl/min)		Final Pump Rate (bbl/min)		Avg Pump Rate (bbl/min)		Final Pump Pressure (psi)		Plug Bump Pressure (psi)		
Pipe Reciprocated?		Stroke (ft)		Reciprocation Rate (spm)		Pipe Rotated?		Pipe RPM (rpm)		
Tagged Depth (ftKB)		Tag Method		Depth Plug Drilled Out To (ft)		Drill Out Diameter (in)		Drill Out Date		
<b>Cement Fluid: &lt;Description?&gt;</b>										
Fluid Type		Fluid Description			Amount (sack)		Class		Volume Pumped (bbl)	
Estimated Top (ftKB)		Est Btm (ftKB)		Yield (ft³/sack)		Mix H2O Ratio (gal/sack)		Free Water (%)		
Density (lb/gal)		Plastic Viscosity (cP)			Thickening Time (hr)		1st Compressive Strength (psi)			
<b>Cement Fluid Additives</b>										
Add		Type			Conc					