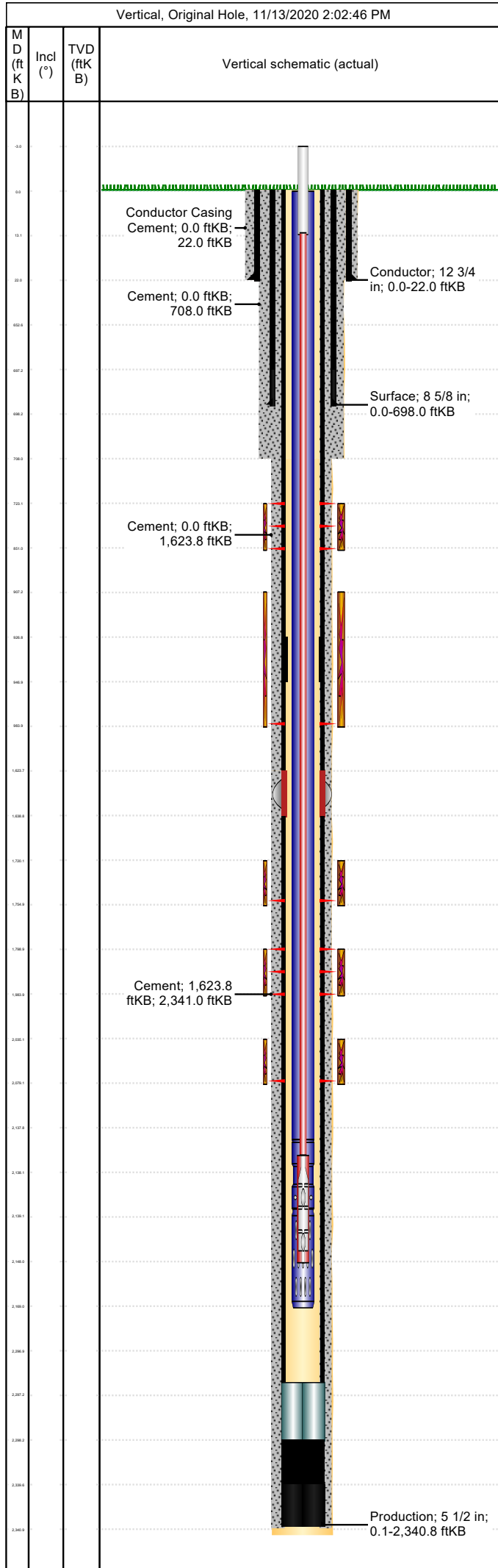


Well Name: Apache Canyon 02-03

Conductor

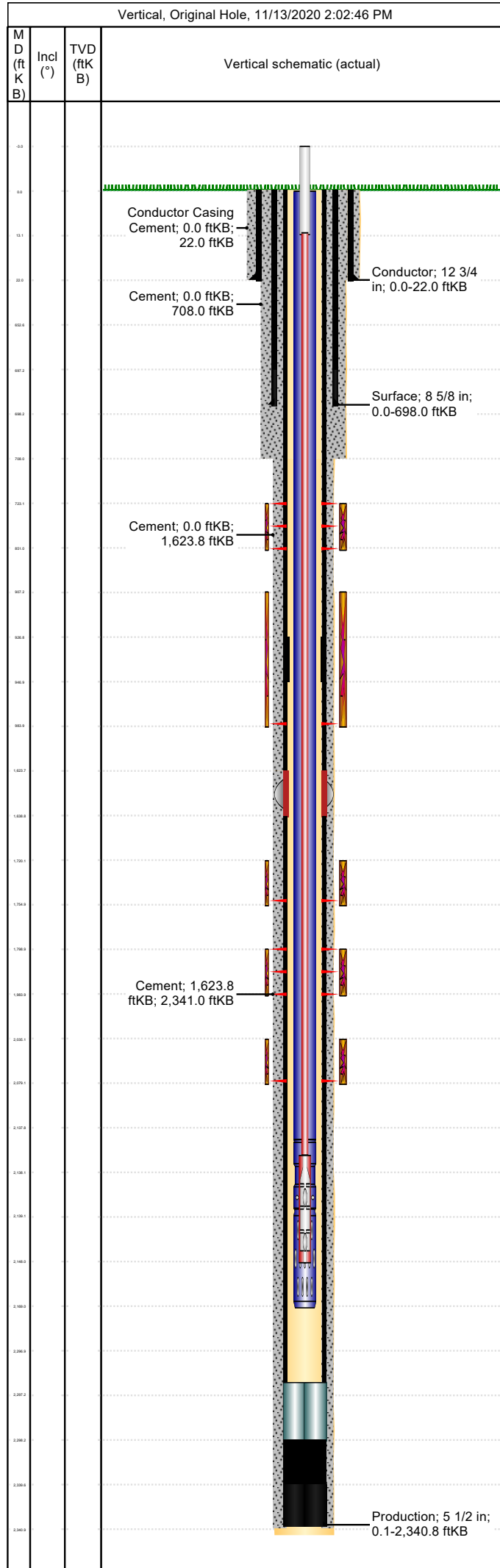
API/UWI 05071083470000	Location T34S-R68W-S02	Field Name Purgatoire River	Permit Number 20050604	State/Province Colorado	Well Configuration Type Vertical
Gr Elev (ft) 8,307.00	Casing Flange Elevation (ft)	KB-Ground Distance (ft) 0.00	KB-Casing Flange Distance (ft)	Spud Date 6/16/2005 15:45	Rig Release Date 6/18/2005 00:00



Wellbore										
Wellbore Name			Profile Type			Vertical Section Direction (°)				
Section Des		Size (in)		Act Top (ftKB)		Act Btm (ftKB)				
<b>Kick Offs &amp; Key Depths</b>										
Type		Top Depth (ftKB)			Depth Top (TVD) (ftKB)					
<b>Wellhead</b>										
Type										
Des		Make		Model		SN		WP Top (psi)		
<b>Last Mud Check</b>										
Date	Type	Depth (ftKB)	Dens (lb/gal)	Vis (s/qt)	Gel 10s (lb/100ft²)	Gel 10m (lb/100ft²)	PV (cP)	YP (lb/100ft²)		
<b>Casing</b>										
Casing Description Conductor			Run Date 6/16/2005 00:00		Set Depth (ftKB) 22.0		Wellbore Original Hole			
Centralizers					Scratchers					
Jts	Item Des	OD (in)	ID (in)	Wt (lb/ft)	Grade	Len (ft)	Top (ftKB)	Btm (ftKB)		
1	Casing Joints	12 3/4		33.00	J-55	22.00	0.0	22.0		
Casing Description Surface			Run Date 6/17/2005 00:00		Set Depth (ftKB) 698.0		Wellbore Original Hole			
Centralizers					Scratchers					
Jts	Item Des	OD (in)	ID (in)	Wt (lb/ft)	Grade	Len (ft)	Top (ftKB)	Btm (ftKB)		
15	Casing Joints	8 5/8	7.82	36.00	J-55	652.37	0.0	652.4		
1	Float Collar	8 5/8				0.00	652.4	652.4		
	Insert Float Valve	8 5/8	7.82	36.00	J-55	44.65	652.4	697.0		
1	Guide Shoe	8 5/8				0.95	697.0	698.0		
Casing Description Production			Run Date 6/18/2005 00:00		Set Depth (ftKB) 2,340.8		Wellbore Original Hole			
Centralizers					Scratchers					
Jts	Item Des	OD (in)	ID (in)	Wt (lb/ft)	Grade	Len (ft)	Top (ftKB)	Btm (ftKB)		
40	Casing Joints	5 1/2	4.89	17.00	J-55	1,623.72	0.1	1,623.8		
1	DV Tool	5 1/2				15.10	1,623.8	1,638.9		
16	Casing Joints	5 1/2	4.89	17.00	J-55	658.24	1,638.9	2,297.2		
1	Float Collar	5 1/2	0.00			1.15	2,297.2	2,298.3		
1	Float Joint	5 1/2	0.00	15.50	J-55	41.15	2,298.3	2,339.5		
1	Float Shoe	5 1/2	0.00			1.30	2,339.5	2,340.8		
<b>Cement: &lt;Description?&gt;</b>										
Cementing Start Date			Cementing End Date			Wellbore				
Evaluation Method			Cement Evaluation Results							
Comment										
<b>Cement Stage: &lt;Description?&gt;</b>										
Top Depth (ftKB)		Bottom Depth (ftKB)		Full Return?		Vol Cement		Top Plug?		
Initial Pump Rate (bbl/min)		Final Pump Rate (bbl/min)		Avg Pump Rate (bbl/min)		Final Pump Pressure (psi)		Plug Bump Pressure (psi)		
Pipe Reciprocated?		Stroke (ft)		Reciprocation Rate (spm)		Pipe Rotated?		Pipe RPM (rpm)		
Tagged Depth (ftKB)		Tag Method		Depth Plug Drilled Out To (ft)		Drill Out Diameter (in)		Drill Out Date		
<b>Cement Fluid: &lt;Description?&gt;</b>										
Fluid Type		Fluid Description				Amount (sack)		Class		Volume Pumped (bbl)
Estimated Top (ftKB)		Est Btm (ftKB)		Yield (ft³/sack)		Mix H2O Ratio (gal/sack)		Free Water (%)		
Density (lb/gal)			Plastic Viscosity (cP)			Thickening Time (hr)		1st Compressive Strength (psi)		

Well Name: Apache Canyon 02-03

API/UWI 05071083470000	Location T34S-R68W-S02	Field Name Purgatoire River	Permit Number 20050604	State/Province Colorado	Well Configuration Type Vertical
Gr Elev (ft) 8,307.00	Casing Flange Elevation (ft)	KB-Ground Distance (ft) 0.00	KB-Casing Flange Distance (ft)	Spud Date 6/16/2005 15:45	Rig Release Date 6/18/2005 00:00



Cement Fluid Additives

Add	Type	Conc
-----	------	------

--	--	--