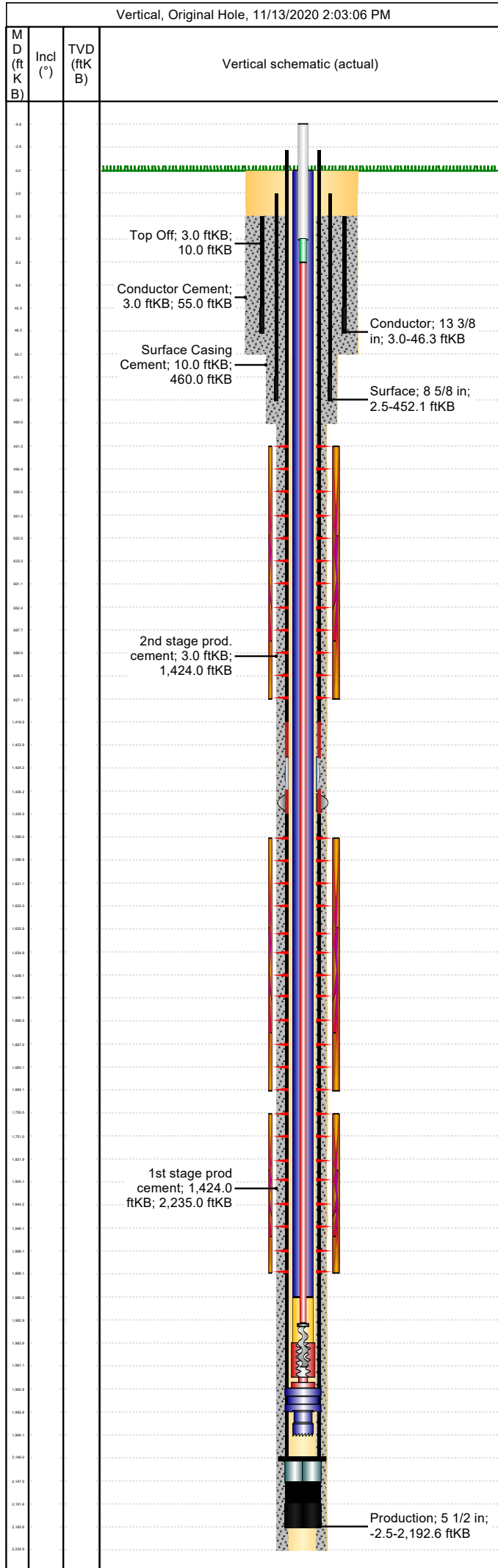


Well Name: Apache Canyon 01-12

Conductor

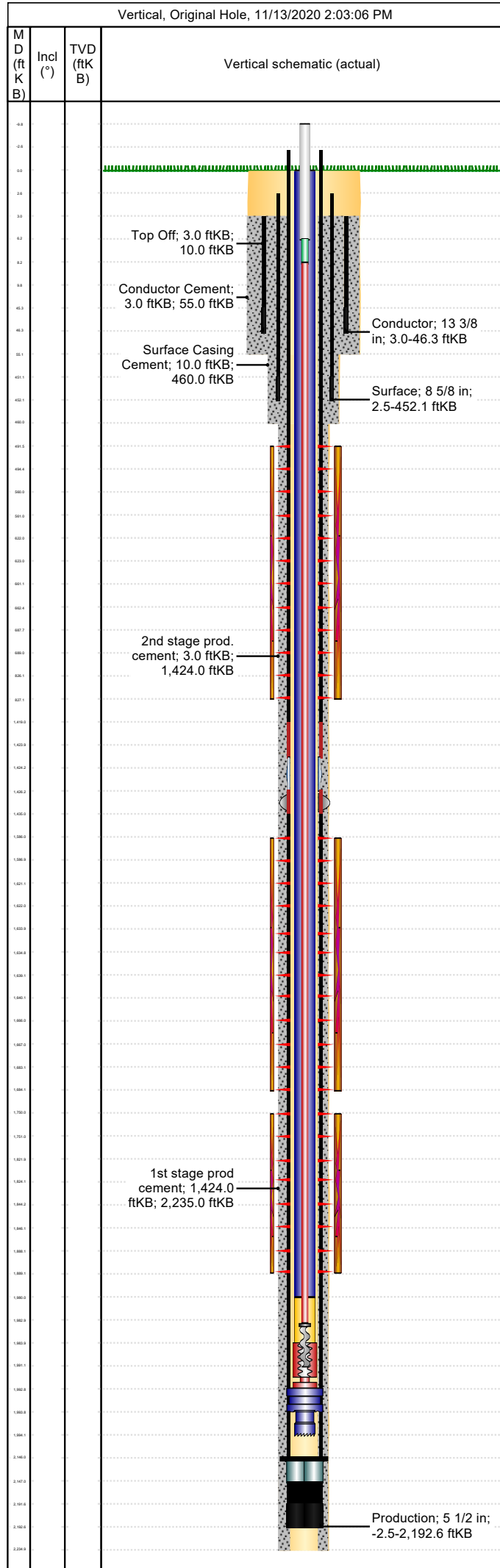
API/UWI 05071094750000	Location T34S-R68W-S01	Field Name Purgatoire River	Permit Number 20076439	State/Province Colorado	Well Configuration Type Vertical
Gr Elev (ft) 8,109.00	Casing Flange Elevation (ft)	KB-Ground Distance (ft) 0.00	KB-Casing Flange Distance (ft)	Spud Date 3/7/2008 15:00	Rig Release Date 3/10/2008 12:00



Wellbore										
Wellbore Name			Profile Type			Vertical Section Direction (°)				
Section Des		Size (in)		Act Top (ftKB)		Act Btm (ftKB)				
Kick Offs & Key Depths										
Type		Top Depth (ftKB)			Depth Top (TVD) (ftKB)					
Wellhead										
Type										
Des		Make		Model		SN		WP Top (psi)		
Last Mud Check										
Date		Type		Depth (ftKB)	Dens (lb/gal)	Vis (s/qt)	Gel 10s (lb/100ft ²)	Gel 10m (lb/100ft ²)	YP (lb/100ft ²)	
Casing										
Casing Description Conductor				Run Date 3/7/2008 18:30		Set Depth (ftKB) 46.3		Wellbore Original Hole		
Centralizers 1					Scratchers					
Jts	Item Des	OD (in)	ID (in)	Wt (lb/ft)	Grade	Len (ft)	Top (ftKB)	Btm (ftKB)		
1	Casing Joints	13 3/8	12.62	48.00	H-40	42.30	3.0	45.3		
1	Guide Shoe	13 3/8	12.62			1.00	45.3	46.3		
Casing Description Surface				Run Date 3/8/2008 13:30		Set Depth (ftKB) 452.1		Wellbore Original Hole		
Centralizers 5					Scratchers					
Jts	Item Des	OD (in)	ID (in)	Wt (lb/ft)	Grade	Len (ft)	Top (ftKB)	Btm (ftKB)		
10	Casing Joints	8 5/8	8.10	24.00	J-55	448.59	2.5	451.1		
1	Float Shoe	8 5/8	8.10	24.00	J-55	1.00	451.1	452.1		
Casing Description Production				Run Date 3/10/2008 05:30		Set Depth (ftKB) 2,192.6		Wellbore Original Hole		
Centralizers					Scratchers					
Jts	Item Des	OD (in)	ID (in)	Wt (lb/ft)	Grade	Len (ft)	Top (ftKB)	Btm (ftKB)		
32	Casing Joints	5 1/2	4.95	15.50	J-55	1,421.35	-2.5	1,418.9		
1	Casing Pup Joint	5 1/2	4.95	15.50	J-55	5.20	1,418.9	1,424.1		
1	Stage Collar	5 1/2	4.95	15.50	J-55	2.00	1,424.1	1,426.1		
1	External Casing Packer	5 1/2	4.95	15.50	J-55	9.10	1,426.1	1,435.2		
16	Casing Joints	5 1/2	4.95	15.50	J-55	710.85	1,435.2	2,146.0		
1	Float Collar	5 1/2	0.00	15.50	J-55	1.10	2,146.0	2,147.1		
1	Casing Joints	5 1/2	0.00	15.50	J-55	44.50	2,147.1	2,191.6		
1	Float Shoe	5 1/2	0.00	15.50	J-55	1.00	2,191.6	2,192.6		
Cement: <Description?>										
Cementing Start Date			Cementing End Date			Wellbore				
Evaluation Method			Cement Evaluation Results							
Comment										
Cement Stage: <Description?>										
Top Depth (ftKB)		Bottom Depth (ftKB)		Full Return?	Vol Cement	Top Plug?	Bottom Plug?			
Initial Pump Rate (bbl/min)		Final Pump Rate (bbl/min)		Avg Pump Rate (bbl/min)		Final Pump Pressure (psi)	Plug Bump Pressure (psi)			
Pipe Reciprocated?		Stroke (ft)		Reciprocation Rate (spm)		Pipe Rotated?	Pipe RPM (rpm)			
Tagged Depth (ftKB)		Tag Method		Depth Plug Drilled Out To (ft)		Drill Out Diameter (in)	Drill Out Date			
Cement Fluid: <Description?>										
Fluid Type		Fluid Description				Amount (sack)	Class	Volume Pumped (bbl)		
Estimated Top (ftKB)		Est Btm (ftKB)		Yield (ft ³ /sack)		Mix H2O Ratio (gal/sack)	Free Water (%)			
Density (lb/gal)		Plastic Viscosity (cP)		Thickening Time (hr)		1st Compressive Strength (psi)				

Well Name: Apache Canyon 01-12

API/UWI 05071094750000	Location T34S-R68W-S01	Field Name Purgatoire River	Permit Number 20076439	State/Province Colorado	Well Configuration Type Vertical
Gr Elev (ft) 8,109.00	Casing Flange Elevation (ft)	KB-Ground Distance (ft) 0.00	KB-Casing Flange Distance (ft)	Spud Date 3/7/2008 15:00	Rig Release Date 3/10/2008 12:00



Cement Fluid Additives		
Add	Type	Conc