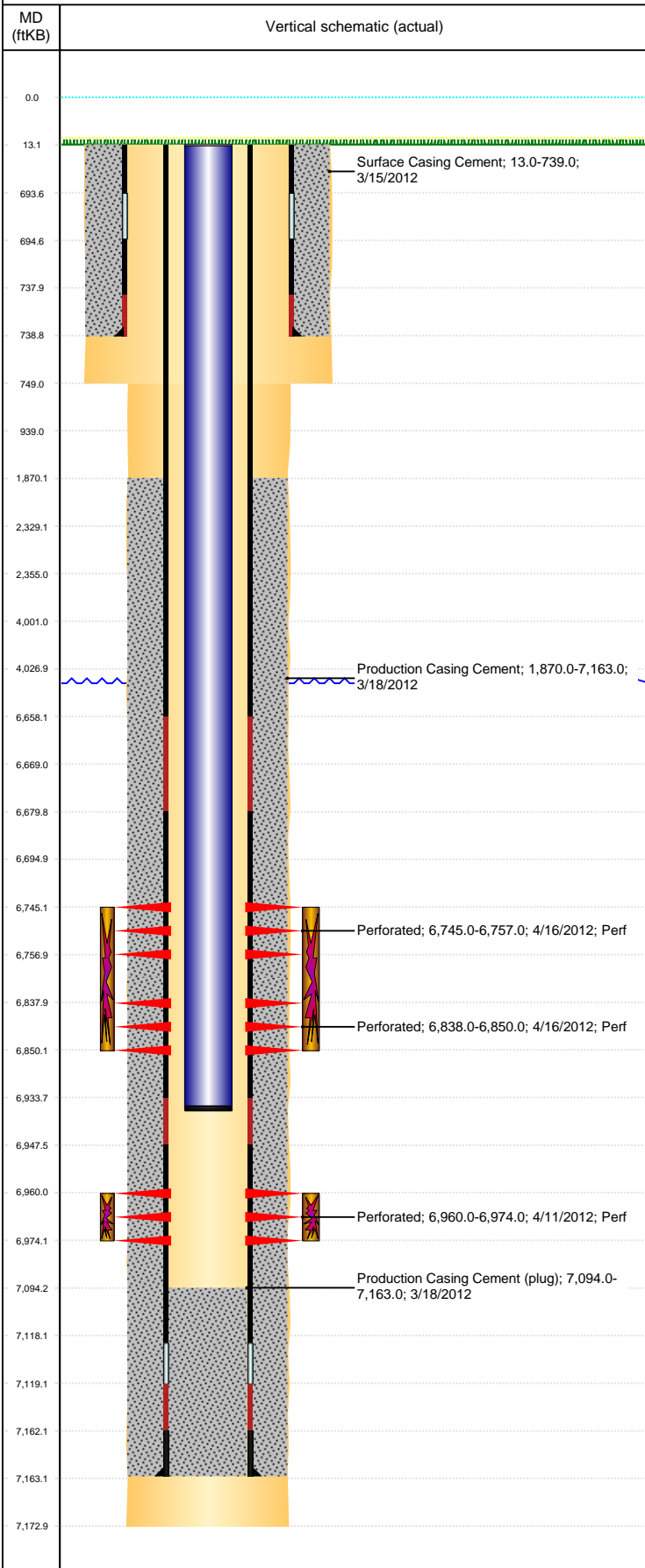


Well Name: LDS D08-29

VERTICAL, ORIGINAL HOLE, 6/14/2021 11:23:04 AM



Well Header					
API	05-123-31990	Business Unit	DJ BASIN	District	15
Well Config	VERTICAL				
KB - GL / MSL (ft...)	13.00	Spud Date	3/14/2012	P & A Date	
Well Production Status	PR				SoRT No
Comment					

Surface Location (Congressional)								
Qtr 3	Qtr 4	Section	Twnshp	Twnsh...	Range	Rng E/...	Actual Latitude (°)	Actual Longitude (°)
SE	SW	5	3	N	64	W	40.24769594	-104.57944654

Wellbore Sections			
Section Des	Size (in)	Act Top, MD (ftKB)	Act Btm, MD (ftKB)
SURFACE	12 1/4	13	749
PRODUCTION	7 7/8	749	7,173

Casing Strings						
Csg Des	Run Date	OD (in)	Wt/Len (lb/ft)	Grade	Top, MD (ftKB)	MD (ftKB)
Surface	3/14/2012	8 5/8	24.00	J-55	13.0	739.0
PRODUCTION	3/17/2012	4 1/2	11.60	M-80	13.0	7,163.0

Cement			
Des	Start Date	Top (ftKB)	Btm (ftKB)
Surface Casing Cement	3/15/2012	13.0	739.0
Production Casing Cement	3/18/2012	1,870.0	7,163.0

Zone Statuses					
Zone Name	Status Date	Status	Fluid Type	Job	Prod Method
CODELL	4/25/2012	PR		DRILLING/COMPLETION - ORIGINAL, 3/13/2012...	
NIOBRARA	4/25/2012	PR		DRILLING/COMPLETION - ORIGINAL, 3/13/2012...	

Perforation Data					
Linked Zone	Bnch/Stg	Entered Shot Total	Top (ftKB)	Btm (ftKB)	Date
NIOBRARA, ORIGINAL HOLE	B	24	6,745.00	6,757.00	4/16/2012
NIOBRARA, ORIGINAL HOLE	C	24	6,838.00	6,850.00	4/16/2012
CODELL, ORIGINAL HOLE	01	56	6,960.00	6,974.00	4/11/2012

Stimulation Intervals			
Zone	Start Date	Top (ftKB)	Btm (ftKB)
NIOBRARA, ORIGINAL HOLE	4/16/2012	6,745.0	6,850.0
CODELL, ORIGINAL HOLE	4/16/2012	6,960.0	6,974.0

Other In Hole					
Run Date	Des	Make	OD (in)	Top (ftKB)	Btm (ftKB)

Logs			
Date	Type	Top, MD (ftKB)	Btm, MD (ftKB)
3/17/2012	SPECTRAL DENSITY/Pe/DSN NEUTRON/SP/ARRAY COMPENSATED TRUE RESISTIVITY	3,798.0	7,169.0
3/17/2012	SPECTRAL GAMMA RAY	6,448.0	7,124.0
4/11/2012	CBL/CCL/GR	1,870.0	7,093.0
4/22/2012	GYRO	13.0	6,850.0

Plug Back Total Depths			
Date	Type	Com	Depth (ftKB)
7/3/2012	PLUG REMNANTS		7,117.0
5/21/2015	FILL	DID NOT TAG.	0.0