

# POCO Operating

Well Name: **Brighton Lakes 20-17-1CDH**

Surface Location: Brighton Lakes Pad Sec.20-T1S-R66W

North American Datum 1983 , US State Plane 1983, Colorado Northern Zone

Ground Elevation: 5047.0

+N/-S	+E/-W	Northing	Easting	Latitude	Longitude	Slot
0.0	0.0	1223370.47	3195665.30	39.944420	-104.802140	

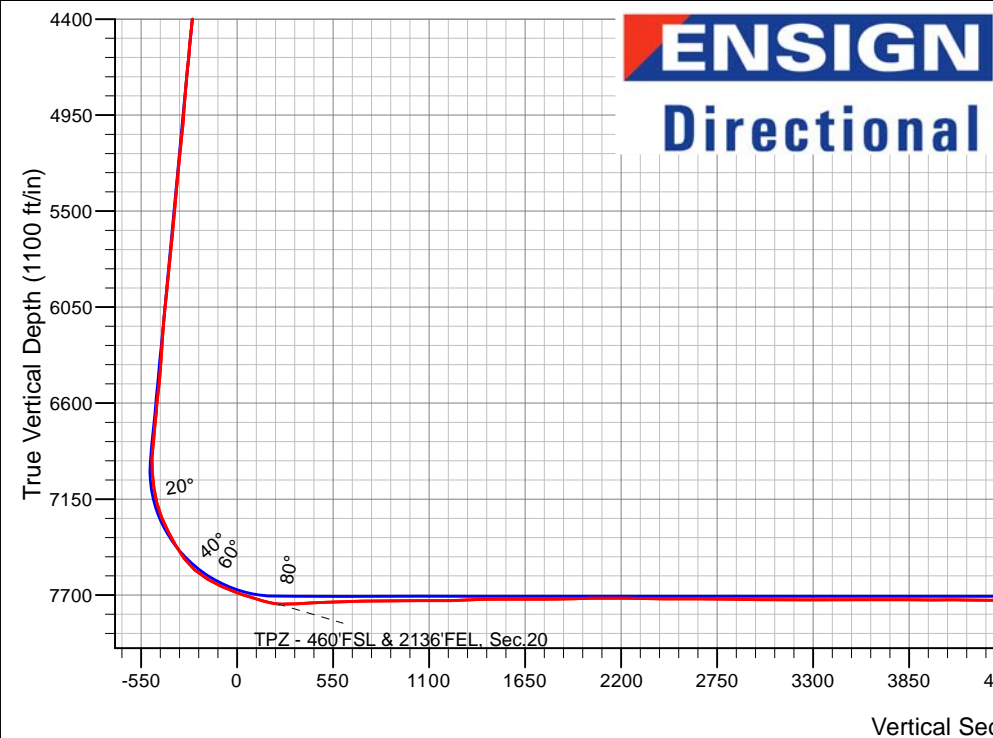
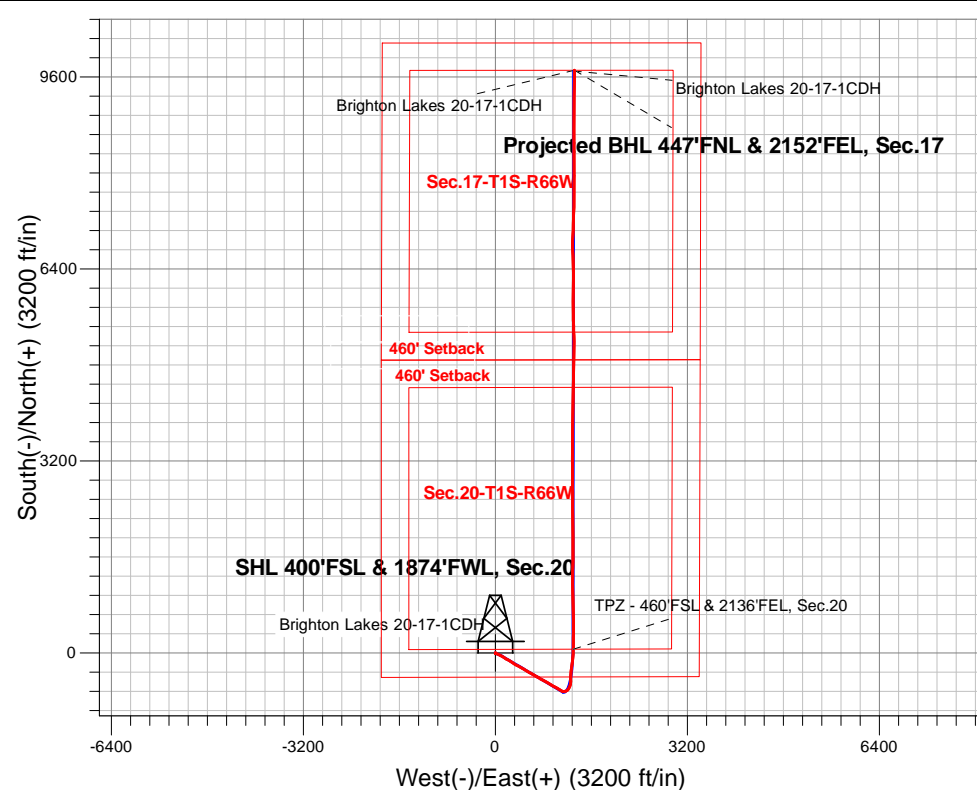
Ensign 140 RKB - 23.5' WELL @ 5070.5ft (Ensign 140 RKB - 23.5')

## FINAL SURVEY

**Projected Bottom Hole Location**

**17,960'MD 7701'TVD 9710'N & 1319'E of SHL**

**88.90 degree Incl @ 359.41 degree AZM**



**ENSIGN**  
Directional

Brighton Lakes Pad Sec.20-T1S-R66W  
Brighton Lakes 20-17-1CDH  
Brighton Lakes 20-17-1CDH Wellbore #1  
11:00, December 03 2020

### ANNOTATIONS

TVD	MD	Annotation
7750.4	8305.0	TPZ - 460'FSL & 2136'FEL, Sec.20

### LEGEND

- ▲ Brighton Lakes 20-17-1CDH, Brighton Lakes 20-17-1CDH Wellbore #1, Plan #2 (11-13-20) V0
- Brighton Lakes 20-17-1CDH Wellbore #1 Survey #1

**Projected BHL 447'FNL & 2152'FEL, Sec.17**

Brighton Lakes 20-17-1CDH  
Brighton Lakes 20-17-1CDH

Vertical Section at 7.68° (1100 ft/in)



## **POCO Operating**

**Sec.20-T1S-R66W**

**Brighton Lakes Pad Sec.20-T1S-R66W**

**Brighton Lakes 20-17-1CDH**

**Brighton Lakes 20-17-1CDH Wellbore #1**

**Survey: Survey #1**

## **Standard Survey Report**

**03 December, 2020**

<b>Company:</b>	POCO Operating	<b>Local Co-ordinate Reference:</b>	Well Brighton Lakes 20-17-1CDH
<b>Project:</b>	Sec.20-T1S-R66W	<b>TVD Reference:</b>	WELL @ 5070.5ft (Ensign 140 RKB - 23.5')
<b>Site:</b>	Brighton Lakes Pad Sec.20-T1S-R66W	<b>MD Reference:</b>	WELL @ 5070.5ft (Ensign 140 RKB - 23.5')
<b>Well:</b>	Brighton Lakes 20-17-1CDH	<b>North Reference:</b>	True
<b>Wellbore:</b>	Brighton Lakes 20-17-1CDH Wellbore #1	<b>Survey Calculation Method:</b>	Minimum Curvature
<b>Design:</b>	Brighton Lakes 20-17-1CDH Wellbore #1	<b>Database:</b>	US_EDM

<b>Project</b>	Sec.20-T1S-R66W, Adams County, CO		
<b>Map System:</b>	US State Plane 1983	<b>System Datum:</b>	Mean Sea Level
<b>Geo Datum:</b>	North American Datum 1983		
<b>Map Zone:</b>	Colorado Northern Zone		Using geodetic scale factor

Site		Brighton Lakes Pad Sec.20-T1S-R66W			
Site Position:		Northing:	1,223,370.47 usft	Latitude:	39.944420
From:	Lat/Long	Easting:	3,195,665.30 usft	Longitude:	-104.802140
Position Uncertainty:	0.0 ft	Slot Radius:	13-3/16 "	Grid Convergence:	0.45 °

Well	Brighton Lakes 20-17-1CDH					
Well Position	+N/-S	0.0 ft	Northing:	1,223,370.47 usft	Latitude:	39.944420
	+E/-W	0.0 ft	Easting:	3,195,665.30 usft	Longitude:	-104.802140
Position Uncertainty		0.0 ft	Wellhead Elevation:	0.0 ft	Ground Level:	5,047.0 ft

<b>Wellbore</b>	Brighton Lakes 20-17-1CDH Wellbore #1				
<b>Magnetics</b>	<b>Model Name</b>	<b>Sample Date</b>	<b>Declination (°)</b>	<b>Dip Angle (°)</b>	<b>Field Strength (nT)</b>
	HDGM	11/13/2020	8.02	66.17	51,705

<b>Design</b>	Brighton Lakes 20-17-1CDH Wellbore #1				
<b>Audit Notes:</b>					
<b>Version:</b>	1.0	<b>Phase:</b>	ACTUAL	<b>Tie On Depth:</b>	0.0
<b>Vertical Section:</b>	<b>Depth From (TVD) (ft)</b>	<b>+N/-S (ft)</b>	<b>+E/-W (ft)</b>	<b>Direction (°)</b>	
	0.0	0.0	0.0	7.68	

<b>Survey Program</b>	<b>Date</b>	12/03/2020			
<b>From (ft)</b>	<b>To (ft)</b>	<b>Survey (Wellbore)</b>	<b>Tool Name</b>	<b>Description</b>	
134.8	17,960.0	Survey #1 (Brighton Lakes 20-17-1CDH W	MWD	MWD - Standard	

<b>Survey</b>										
<b>Measured Depth (ft)</b>	<b>Inclination (°)</b>	<b>Azimuth (°)</b>	<b>Vertical Depth (ft)</b>	<b>+N/-S (ft)</b>	<b>+E/-W (ft)</b>	<b>Vertical Section (ft)</b>	<b>Dogleg Rate (°/100usft)</b>	<b>Build Rate (°/100usft)</b>	<b>Turn Rate (°/100usft)</b>	
0.0	0.00	0.00	0.0	0.0	0.0	0.0	0.00	0.00	0.00	
134.8	0.31	136.12	134.8	-0.3	0.3	-0.2	0.23	0.23	0.00	
221.8	0.83	146.31	221.8	-1.0	0.8	-0.8	0.61	0.60	11.71	
308.8	0.66	129.79	308.8	-1.8	1.5	-1.6	0.31	-0.20	-18.99	
396.8	0.26	147.54	396.8	-2.3	2.0	-2.0	0.48	-0.45	20.17	
483.8	0.35	152.02	483.8	-2.7	2.2	-2.4	0.11	0.10	5.15	
570.8	0.79	161.34	570.8	-3.5	2.5	-3.1	0.52	0.51	10.71	
657.8	0.57	346.44	657.8	-3.6	2.6	-3.3	1.56	-0.25	-201.03	
745.8	1.27	355.93	745.8	-2.2	2.5	-1.9	0.81	0.80	10.78	
832.8	0.75	301.35	832.8	-1.0	1.9	-0.7	1.19	-0.60	-62.74	

<b>Company:</b>	POCO Operating	<b>Local Co-ordinate Reference:</b>	Well Brighton Lakes 20-17-1CDH
<b>Project:</b>	Sec.20-T1S-R66W	<b>TVD Reference:</b>	WELL @ 5070.5ft (Ensign 140 RKB - 23.5')
<b>Site:</b>	Brighton Lakes Pad Sec.20-T1S-R66W	<b>MD Reference:</b>	WELL @ 5070.5ft (Ensign 140 RKB - 23.5')
<b>Well:</b>	Brighton Lakes 20-17-1CDH	<b>North Reference:</b>	True
<b>Wellbore:</b>	Brighton Lakes 20-17-1CDH Wellbore #1	<b>Survey Calculation Method:</b>	Minimum Curvature
<b>Design:</b>	Brighton Lakes 20-17-1CDH Wellbore #1	<b>Database:</b>	US_EDM

Survey									
Measured Depth (ft)	Inclination (°)	Azimuth (°)	Vertical Depth (ft)	+N/-S (ft)	+E/-W (ft)	Vertical Section (ft)	Dogleg Rate (°/100usft)	Build Rate (°/100usft)	Turn Rate (°/100usft)
919.8	1.05	274.10	919.7	-0.6	0.6	-0.5	0.59	0.34	-31.32
1,006.8	1.41	269.09	1,006.7	-0.6	-1.2	-0.8	0.43	0.41	-5.76
1,093.8	1.41	251.43	1,093.7	-1.0	-3.3	-1.4	0.50	0.00	-20.30
1,181.8	0.44	156.42	1,181.7	-1.6	-4.2	-2.2	1.72	-1.10	-107.97
1,268.8	1.05	128.12	1,268.7	-2.4	-3.5	-2.8	0.80	0.70	-32.53
1,355.8	1.58	132.07	1,355.7	-3.7	-1.9	-3.9	0.62	0.61	4.54
1,442.8	2.72	122.76	1,442.6	-5.6	0.7	-5.5	1.37	1.31	-10.70
1,530.8	5.54	113.70	1,530.4	-8.5	6.3	-7.5	3.28	3.20	-10.30
1,617.8	8.66	109.31	1,616.7	-12.3	16.4	-10.0	3.64	3.59	-5.05
1,704.8	10.90	111.51	1,702.4	-17.5	30.2	-13.3	2.61	2.57	2.53
1,791.8	11.95	112.38	1,787.7	-23.9	46.2	-17.6	1.22	1.21	1.00
1,835.8	12.30	112.65	1,830.7	-27.5	54.7	-19.9	0.81	0.80	0.61
1,935.0	12.93	113.66	1,927.5	-36.0	74.6	-25.7	0.67	0.64	1.02
2,024.0	14.95	122.28	2,013.9	-46.1	93.5	-33.2	3.25	2.27	9.69
2,114.0	14.60	121.40	2,100.9	-58.2	113.0	-42.6	0.46	-0.39	-0.98
2,204.0	14.42	121.40	2,188.0	-70.0	132.2	-51.7	0.20	-0.20	0.00
2,294.0	14.16	121.40	2,275.3	-81.6	151.2	-60.6	0.29	-0.29	0.00
2,383.0	13.72	120.87	2,361.6	-92.7	169.5	-69.2	0.51	-0.49	-0.60
2,473.0	13.19	120.17	2,449.2	-103.3	187.6	-77.3	0.62	-0.59	-0.78
2,563.0	12.49	120.17	2,536.9	-113.3	204.9	-85.0	0.78	-0.78	0.00
2,653.0	11.70	121.57	2,624.9	-123.0	221.0	-92.4	0.94	-0.88	1.56
2,742.0	12.66	116.83	2,711.9	-132.1	237.4	-99.2	1.56	1.08	-5.33
2,832.0	13.10	121.40	2,799.7	-141.9	254.9	-106.6	1.23	0.49	5.08
2,921.0	13.28	125.79	2,886.3	-153.1	271.8	-115.4	1.14	0.20	4.93
3,034.0	14.42	124.04	2,996.0	-168.6	294.0	-127.8	1.07	1.01	-1.55
3,123.0	13.37	122.10	3,082.4	-180.3	311.9	-137.0	1.29	-1.18	-2.18
3,213.0	14.42	121.75	3,169.8	-191.7	330.3	-145.9	1.17	1.17	-0.39
3,302.0	13.54	120.17	3,256.1	-202.8	348.7	-154.4	1.08	-0.99	-1.78
3,392.0	14.60	118.94	3,343.4	-213.6	367.7	-162.5	1.22	1.18	-1.37
3,482.0	13.81	117.71	3,430.7	-224.0	387.2	-170.3	0.94	-0.88	-1.37
3,572.0	14.33	118.23	3,518.0	-234.3	406.5	-177.9	0.59	0.58	0.58
3,661.0	13.72	118.06	3,604.3	-244.5	425.5	-185.4	0.69	-0.69	-0.19
3,751.0	12.75	117.71	3,691.9	-254.1	443.7	-192.6	1.08	-1.08	-0.39
3,840.0	13.01	118.76	3,778.7	-263.5	461.2	-199.5	0.39	0.29	1.18
3,929.0	13.54	121.05	3,865.3	-273.7	478.9	-207.3	0.84	0.60	2.57
4,019.0	12.57	120.52	3,953.0	-284.1	496.4	-215.2	1.09	-1.08	-0.59
4,109.0	13.45	120.70	4,040.7	-294.4	513.8	-223.1	0.98	0.98	0.20
4,199.0	14.51	120.70	4,128.0	-305.5	532.5	-231.6	1.18	1.18	0.00
4,289.0	13.81	120.87	4,215.3	-316.8	551.4	-240.3	0.78	-0.78	0.19
4,379.0	13.72	119.99	4,302.7	-327.6	569.9	-248.6	0.25	-0.10	-0.98
4,468.0	14.95	118.23	4,388.9	-338.3	589.1	-256.6	1.47	1.38	-1.98
4,557.0	14.42	116.83	4,475.0	-348.8	609.1	-264.3	0.72	-0.60	-1.57
4,647.0	14.16	120.17	4,562.2	-359.4	628.7	-272.2	0.96	-0.29	3.71
4,736.0	12.93	121.57	4,648.8	-370.0	646.6	-280.3	1.43	-1.38	1.57

<b>Company:</b>	POCO Operating	<b>Local Co-ordinate Reference:</b>	Well Brighton Lakes 20-17-1CDH
<b>Project:</b>	Sec.20-T1S-R66W	<b>TVD Reference:</b>	WELL @ 5070.5ft (Ensign 140 RKB - 23.5')
<b>Site:</b>	Brighton Lakes Pad Sec.20-T1S-R66W	<b>MD Reference:</b>	WELL @ 5070.5ft (Ensign 140 RKB - 23.5')
<b>Well:</b>	Brighton Lakes 20-17-1CDH	<b>North Reference:</b>	True
<b>Wellbore:</b>	Brighton Lakes 20-17-1CDH Wellbore #1	<b>Survey Calculation Method:</b>	Minimum Curvature
<b>Design:</b>	Brighton Lakes 20-17-1CDH Wellbore #1	<b>Database:</b>	US_EDM

Survey									
Measured Depth (ft)	Inclination (°)	Azimuth (°)	Vertical Depth (ft)	+N/-S (ft)	+E/-W (ft)	Vertical Section (ft)	Dogleg Rate (°/100usft)	Build Rate (°/100usft)	Turn Rate (°/100usft)
4,825.0	14.33	120.52	4,735.3	-380.9	664.5	-288.7	1.60	1.57	-1.18
4,915.0	12.93	120.34	4,822.7	-391.6	682.8	-296.9	1.56	-1.56	-0.20
5,004.0	11.26	118.06	4,909.7	-400.7	699.1	-303.7	1.95	-1.88	-2.56
5,094.0	12.57	119.99	4,997.8	-409.7	715.3	-310.5	1.52	1.46	2.14
5,183.0	13.98	124.56	5,084.4	-420.7	732.6	-319.0	1.97	1.58	5.13
5,272.0	14.16	121.75	5,170.8	-432.5	750.7	-328.3	0.79	0.20	-3.16
5,362.0	14.95	113.31	5,257.9	-442.9	770.7	-336.0	2.51	0.88	-9.38
5,451.0	14.95	117.18	5,343.9	-452.7	791.5	-342.9	1.12	0.00	4.35
5,541.0	15.39	120.87	5,430.7	-464.1	812.0	-351.5	1.18	0.49	4.10
5,631.0	13.72	119.99	5,517.8	-475.6	831.5	-360.2	1.87	-1.86	-0.98
5,720.0	14.42	119.99	5,604.2	-486.4	850.3	-368.4	0.79	0.79	0.00
5,809.0	14.25	118.76	5,690.4	-497.2	869.5	-376.6	0.39	-0.19	-1.38
5,900.0	15.12	120.52	5,778.4	-508.6	889.5	-385.2	1.07	0.96	1.93
5,990.0	13.54	119.47	5,865.6	-519.8	908.8	-393.7	1.78	-1.76	-1.17
6,079.0	14.25	122.10	5,952.0	-530.7	927.1	-402.1	1.07	0.80	2.96
6,170.0	12.49	121.93	6,040.5	-541.9	945.0	-410.8	1.93	-1.93	-0.19
6,259.0	13.28	120.70	6,127.3	-552.2	961.9	-418.7	0.94	0.89	-1.38
6,349.0	13.98	117.71	6,214.8	-562.5	980.5	-426.5	1.10	0.78	-3.32
6,439.0	11.34	113.49	6,302.6	-571.1	998.2	-432.6	3.11	-2.93	-4.69
6,529.0	10.82	118.76	6,390.9	-578.7	1,013.7	-438.1	1.26	-0.58	5.86
6,618.0	13.98	122.81	6,477.8	-588.5	1,030.1	-445.6	3.68	3.55	4.55
6,708.0	14.95	121.57	6,565.0	-600.5	1,049.1	-455.0	1.13	1.08	-1.38
6,797.0	13.19	118.41	6,651.3	-611.3	1,067.8	-463.2	2.16	-1.98	-3.55
6,888.0	13.98	121.22	6,739.7	-622.0	1,086.4	-471.3	1.13	0.87	3.09
6,977.0	13.37	121.22	6,826.2	-632.9	1,104.4	-479.7	0.69	-0.69	0.00
7,067.0	11.61	117.71	6,914.1	-642.5	1,121.3	-486.9	2.13	-1.96	-3.90
7,157.0	17.15	81.32	7,001.4	-644.7	1,142.5	-486.3	11.49	6.16	-40.43
7,247.0	20.14	72.00	7,086.7	-637.9	1,170.3	-475.8	4.68	3.32	-10.36
7,336.0	18.03	53.90	7,170.9	-625.1	1,196.1	-459.7	7.03	-2.37	-20.34
7,426.0	25.50	34.21	7,254.5	-600.8	1,218.3	-432.6	11.50	8.30	-21.88
7,516.0	27.96	25.07	7,334.9	-565.6	1,238.1	-395.1	5.32	2.73	-10.16
7,606.0	29.90	11.71	7,413.8	-524.5	1,251.6	-352.6	7.48	2.16	-14.84
7,696.0	36.67	0.64	7,489.0	-475.5	1,256.5	-303.4	10.08	7.52	-12.30
7,786.0	48.72	358.88	7,555.1	-414.6	1,256.1	-243.1	13.45	13.39	-1.96
7,876.0	59.71	5.56	7,607.6	-341.9	1,259.2	-170.6	13.60	12.21	7.42
7,965.0	65.51	9.43	7,648.6	-263.6	1,269.6	-91.6	7.57	6.52	4.35
8,055.0	69.73	6.61	7,682.8	-181.2	1,281.2	-8.4	5.51	4.69	-3.13
8,145.0	72.37	4.86	7,712.1	-96.5	1,289.7	76.6	3.46	2.93	-1.94
8,235.0	74.83	2.57	7,737.5	-10.4	1,295.3	162.8	3.66	2.73	-2.54
8,305.0	83.93	1.61	7,750.4	58.3	1,297.8	231.2	13.07	13.00	-1.38
TPZ - 460°FSL & 2136°FEL, Sec.20									
8,325.0	86.53	1.34	7,752.0	78.2	1,298.3	251.0	13.07	13.00	-1.34
8,414.0	95.41	0.64	7,750.5	167.1	1,299.8	339.3	10.01	9.98	-0.79

<b>Company:</b>	POCO Operating	<b>Local Co-ordinate Reference:</b>	Well Brighton Lakes 20-17-1CDH
<b>Project:</b>	Sec.20-T1S-R66W	<b>TVD Reference:</b>	WELL @ 5070.5ft (Ensign 140 RKB - 23.5')
<b>Site:</b>	Brighton Lakes Pad Sec.20-T1S-R66W	<b>MD Reference:</b>	WELL @ 5070.5ft (Ensign 140 RKB - 23.5')
<b>Well:</b>	Brighton Lakes 20-17-1CDH	<b>North Reference:</b>	True
<b>Wellbore:</b>	Brighton Lakes 20-17-1CDH Wellbore #1	<b>Survey Calculation Method:</b>	Minimum Curvature
<b>Design:</b>	Brighton Lakes 20-17-1CDH Wellbore #1	<b>Database:</b>	US_EDM

Survey									
Measured Depth (ft)	Inclination (°)	Azimuth (°)	Vertical Depth (ft)	+N/-S (ft)	+E/-W (ft)	Vertical Section (ft)	Dogleg Rate (°/100usft)	Build Rate (°/100usft)	Turn Rate (°/100usft)
8,504.0	92.33	0.81	7,744.5	256.9	1,300.9	428.4	3.43	-3.42	0.19
8,594.0	92.07	0.46	7,741.0	346.8	1,301.9	517.7	0.48	-0.29	-0.39
8,684.0	91.54	0.46	7,738.2	436.8	1,302.7	606.9	0.59	-0.59	0.00
8,774.0	91.19	359.58	7,736.0	526.7	1,302.7	696.1	1.05	-0.39	-0.98
8,864.0	91.36	359.06	7,734.0	616.7	1,301.6	785.1	0.61	0.19	-0.58
8,953.0	90.13	358.53	7,732.9	705.7	1,299.7	873.0	1.50	-1.38	-0.60
9,042.0	90.40	358.00	7,732.4	794.6	1,297.1	960.8	0.67	0.30	-0.60
9,132.0	90.40	358.00	7,731.8	884.6	1,293.9	1,049.5	0.00	0.00	0.00
9,222.0	89.60	358.00	7,731.8	974.5	1,290.8	1,138.2	0.89	-0.89	0.00
9,311.0	91.71	358.53	7,730.8	1,063.5	1,288.1	1,226.0	2.44	2.37	0.60
9,401.0	91.71	1.52	7,728.1	1,153.4	1,288.1	1,315.2	3.32	0.00	3.32
9,490.0	92.07	0.81	7,725.2	1,242.4	1,289.9	1,403.6	0.89	0.40	-0.80
9,580.0	89.78	0.64	7,723.7	1,332.3	1,291.1	1,492.9	2.55	-2.54	-0.19
9,670.0	89.96	0.29	7,723.9	1,422.3	1,291.8	1,582.2	0.44	0.20	-0.39
9,760.0	90.22	0.11	7,723.8	1,512.3	1,292.1	1,671.4	0.35	0.29	-0.20
9,848.0	90.13	359.58	7,723.5	1,600.3	1,291.9	1,758.6	0.61	-0.10	-0.60
9,938.0	91.36	0.46	7,722.3	1,690.3	1,291.9	1,847.8	1.68	1.37	0.98
10,028.0	91.10	0.29	7,720.4	1,780.3	1,292.5	1,937.0	0.35	-0.29	-0.19
10,118.0	91.10	359.58	7,718.7	1,870.3	1,292.4	2,026.2	0.79	0.00	-0.79
10,207.0	89.96	359.76	7,717.9	1,959.3	1,291.9	2,114.3	1.30	-1.28	0.20
10,298.0	89.43	359.93	7,718.4	2,050.3	1,291.6	2,204.5	0.61	-0.58	0.19
10,388.0	89.25	359.23	7,719.4	2,140.3	1,291.0	2,293.6	0.80	-0.20	-0.78
10,478.0	89.16	359.06	7,720.6	2,230.2	1,289.6	2,382.5	0.21	-0.10	-0.19
10,567.0	90.13	0.46	7,721.2	2,319.2	1,289.3	2,470.7	1.91	1.09	1.57
10,657.0	89.87	359.93	7,721.2	2,409.2	1,289.6	2,559.9	0.66	-0.29	-0.59
10,746.0	89.43	0.11	7,721.7	2,498.2	1,289.6	2,648.1	0.53	-0.49	0.20
10,837.0	89.25	0.11	7,722.8	2,589.2	1,289.8	2,738.3	0.20	-0.20	0.00
10,926.0	89.16	359.41	7,724.0	2,678.2	1,289.4	2,826.5	0.79	-0.10	-0.79
11,016.0	88.72	359.23	7,725.7	2,768.2	1,288.3	2,915.5	0.53	-0.49	-0.20
11,106.0	90.13	359.06	7,726.6	2,858.2	1,287.0	3,004.5	1.58	1.57	-0.19
11,196.0	89.78	358.88	7,726.7	2,948.2	1,285.4	3,093.5	0.44	-0.39	-0.20
11,286.0	90.22	359.58	7,726.7	3,038.2	1,284.2	3,182.5	0.92	0.49	0.78
11,376.0	90.31	359.23	7,726.2	3,128.2	1,283.2	3,271.5	0.40	0.10	-0.39
11,466.0	89.78	0.81	7,726.2	3,218.1	1,283.3	3,360.7	1.85	-0.59	1.76
11,556.0	89.96	0.46	7,726.4	3,308.1	1,284.2	3,450.1	0.44	0.20	-0.39
11,646.0	90.04	0.46	7,726.4	3,398.1	1,285.0	3,539.3	0.09	0.09	0.00
11,736.0	89.96	359.58	7,726.4	3,488.1	1,285.0	3,628.5	0.98	-0.09	-0.98
11,826.0	89.16	1.16	7,727.1	3,578.1	1,285.6	3,717.8	1.97	-0.89	1.76
11,915.0	89.60	1.16	7,728.0	3,667.1	1,287.4	3,806.2	0.49	0.49	0.00
12,005.0	90.13	1.16	7,728.2	3,757.1	1,289.2	3,895.6	0.59	0.59	0.00
12,095.0	90.22	0.99	7,728.0	3,847.1	1,290.9	3,985.0	0.21	0.10	-0.19
12,185.0	90.40	0.64	7,727.5	3,937.1	1,292.2	4,074.4	0.44	0.20	-0.39
12,274.0	89.08	0.81	7,727.9	4,026.0	1,293.3	4,162.7	1.50	-1.48	0.19
12,363.0	89.43	0.81	7,729.0	4,115.0	1,294.6	4,251.1	0.39	0.39	0.00

<b>Company:</b>	POCO Operating	<b>Local Co-ordinate Reference:</b>	Well Brighton Lakes 20-17-1CDH
<b>Project:</b>	Sec.20-T1S-R66W	<b>TVD Reference:</b>	WELL @ 5070.5ft (Ensign 140 RKB - 23.5')
<b>Site:</b>	Brighton Lakes Pad Sec.20-T1S-R66W	<b>MD Reference:</b>	WELL @ 5070.5ft (Ensign 140 RKB - 23.5')
<b>Well:</b>	Brighton Lakes 20-17-1CDH	<b>North Reference:</b>	True
<b>Wellbore:</b>	Brighton Lakes 20-17-1CDH Wellbore #1	<b>Survey Calculation Method:</b>	Minimum Curvature
<b>Design:</b>	Brighton Lakes 20-17-1CDH Wellbore #1	<b>Database:</b>	US_EDM

Survey									
Measured Depth (ft)	Inclination (°)	Azimuth (°)	Vertical Depth (ft)	+N/-S (ft)	+E/-W (ft)	Vertical Section (ft)	Dogleg Rate (°/100usft)	Build Rate (°/100usft)	Turn Rate (°/100usft)
12,453.0	89.52	0.99	7,729.9	4,205.0	1,296.0	4,340.5	0.22	0.10	0.20
12,542.0	89.96	0.81	7,730.3	4,294.0	1,297.4	4,428.8	0.53	0.49	-0.20
12,632.0	90.04	1.16	7,730.3	4,384.0	1,298.9	4,518.2	0.40	0.09	0.39
12,721.0	90.22	0.81	7,730.1	4,473.0	1,300.4	4,606.6	0.44	0.20	-0.39
12,811.0	90.31	0.29	7,729.6	4,563.0	1,301.3	4,695.9	0.59	0.10	-0.58
12,900.0	90.75	0.11	7,728.8	4,652.0	1,301.6	4,784.2	0.53	0.49	-0.20
12,990.0	89.34	1.34	7,728.8	4,742.0	1,302.8	4,873.5	2.08	-1.57	1.37
13,079.0	89.16	1.34	7,729.9	4,830.9	1,304.8	4,961.9	0.20	-0.20	0.00
13,168.0	91.36	1.16	7,729.5	4,919.9	1,306.8	5,050.4	2.48	2.47	-0.20
13,258.0	91.45	1.34	7,727.3	5,009.8	1,308.7	5,139.8	0.22	0.10	0.20
13,348.0	91.89	0.99	7,724.7	5,099.8	1,310.6	5,229.2	0.62	0.49	-0.39
13,437.0	91.28	359.41	7,722.2	5,188.8	1,310.9	5,317.4	1.90	-0.69	-1.78
13,526.0	91.45	358.88	7,720.1	5,277.7	1,309.6	5,405.4	0.63	0.19	-0.60
13,616.0	91.71	358.35	7,717.6	5,367.7	1,307.4	5,494.2	0.66	0.29	-0.59
13,705.0	89.87	358.00	7,716.4	5,456.6	1,304.6	5,582.0	2.10	-2.07	-0.39
13,794.0	90.75	357.30	7,715.9	5,545.5	1,300.9	5,669.6	1.26	0.99	-0.79
13,884.0	89.78	0.11	7,715.5	5,635.5	1,298.9	5,758.5	3.30	-1.08	3.12
13,973.0	89.78	358.70	7,715.8	5,724.5	1,297.9	5,846.6	1.58	0.00	-1.58
14,062.0	90.66	0.46	7,715.5	5,813.5	1,297.3	5,934.7	2.21	0.99	1.98
14,152.0	92.07	0.99	7,713.4	5,903.4	1,298.4	6,024.0	1.67	1.57	0.59
14,241.0	91.98	0.46	7,710.2	5,992.4	1,299.6	6,112.3	0.60	-0.10	-0.60
14,331.0	92.33	0.11	7,706.8	6,082.3	1,300.0	6,201.5	0.55	0.39	-0.39
14,421.0	91.01	1.16	7,704.2	6,172.3	1,301.0	6,290.7	1.87	-1.47	1.17
14,511.0	90.92	0.29	7,702.7	6,262.2	1,302.1	6,380.1	0.97	-0.10	-0.97
14,600.0	89.52	358.70	7,702.3	6,351.2	1,301.4	6,468.2	2.38	-1.57	-1.79
14,689.0	89.34	358.18	7,703.2	6,440.2	1,298.9	6,556.0	0.62	-0.20	-0.58
14,779.0	90.48	358.70	7,703.4	6,530.2	1,296.5	6,644.8	1.39	1.27	0.58
14,868.0	90.66	358.53	7,702.5	6,619.1	1,294.3	6,732.7	0.28	0.20	-0.19
14,957.0	90.57	357.12	7,701.5	6,708.1	1,291.0	6,820.4	1.59	-0.10	-1.58
15,047.0	90.04	358.35	7,701.0	6,798.0	1,287.4	6,909.0	1.49	-0.59	1.37
15,136.0	89.78	2.92	7,701.2	6,887.0	1,288.4	6,997.3	5.14	-0.29	5.13
15,226.0	89.96	3.80	7,701.4	6,976.8	1,293.7	7,087.1	1.00	0.20	0.98
15,315.0	90.13	1.69	7,701.3	7,065.7	1,297.9	7,175.8	2.38	0.19	-2.37
15,405.0	90.66	1.87	7,700.7	7,155.6	1,300.7	7,265.3	0.62	0.59	0.20
15,494.0	89.16	1.87	7,700.8	7,244.6	1,303.6	7,353.8	1.69	-1.69	0.00
15,584.0	89.87	1.69	7,701.6	7,334.5	1,306.4	7,443.3	0.81	0.79	-0.20
15,674.0	89.87	1.69	7,701.8	7,424.5	1,309.1	7,532.8	0.00	0.00	0.00
15,763.0	90.31	1.87	7,701.7	7,513.5	1,311.8	7,621.4	0.53	0.49	0.20
15,852.0	90.48	0.81	7,701.1	7,602.4	1,313.9	7,709.8	1.21	0.19	-1.19
15,942.0	90.04	0.29	7,700.6	7,692.4	1,314.8	7,799.1	0.76	-0.49	-0.58
16,031.0	89.34	358.53	7,701.1	7,781.4	1,313.9	7,887.2	2.13	-0.79	-1.98
16,120.0	90.13	359.23	7,701.5	7,870.4	1,312.1	7,975.1	1.19	0.89	0.79
16,209.0	90.31	358.35	7,701.2	7,959.4	1,310.2	8,063.1	1.01	0.20	-0.99

<b>Company:</b>	POCO Operating	<b>Local Co-ordinate Reference:</b>	Well Brighton Lakes 20-17-1CDH
<b>Project:</b>	Sec.20-T1S-R66W	<b>TVD Reference:</b>	WELL @ 5070.5ft (Ensign 140 RKB - 23.5')
<b>Site:</b>	Brighton Lakes Pad Sec.20-T1S-R66W	<b>MD Reference:</b>	WELL @ 5070.5ft (Ensign 140 RKB - 23.5')
<b>Well:</b>	Brighton Lakes 20-17-1CDH	<b>North Reference:</b>	True
<b>Wellbore:</b>	Brighton Lakes 20-17-1CDH Wellbore #1	<b>Survey Calculation Method:</b>	Minimum Curvature
<b>Design:</b>	Brighton Lakes 20-17-1CDH Wellbore #1	<b>Database:</b>	US_EDM

Survey										
Measured Depth (ft)	Inclination (°)	Azimuth (°)	Vertical Depth (ft)	+N/-S (ft)	+E/-W (ft)	Vertical Section (ft)	Dogleg Rate (°/100usft)	Build Rate (°/100usft)	Turn Rate (°/100usft)	
16,299.0	88.99	359.93	7,701.7	8,049.4	1,308.9	8,152.1	2.29	-1.47	1.76	
16,388.0	88.37	359.23	7,703.8	8,138.3	1,308.2	8,240.2	1.05	-0.70	-0.79	
16,478.0	90.04	0.64	7,705.0	8,228.3	1,308.1	8,329.3	2.43	1.86	1.57	
16,567.0	89.69	0.46	7,705.3	8,317.3	1,309.0	8,417.6	0.44	-0.39	-0.20	
16,656.0	89.87	0.81	7,705.6	8,406.3	1,310.0	8,506.0	0.44	0.20	0.39	
16,746.0	91.10	0.11	7,704.8	8,496.3	1,310.7	8,595.2	1.57	1.37	-0.78	
16,835.0	91.01	359.93	7,703.2	8,585.3	1,310.7	8,683.4	0.23	-0.10	-0.20	
16,924.0	91.10	0.11	7,701.6	8,674.3	1,310.8	8,771.6	0.23	0.10	0.20	
17,013.0	91.28	359.41	7,699.7	8,763.3	1,310.4	8,859.8	0.81	0.20	-0.79	
17,103.0	91.01	359.06	7,697.9	8,853.2	1,309.2	8,948.8	0.49	-0.30	-0.39	
17,192.0	89.60	0.46	7,697.4	8,942.2	1,308.8	9,036.9	2.23	-1.58	1.57	
17,281.0	89.87	0.99	7,697.9	9,031.2	1,309.9	9,125.3	0.67	0.30	0.60	
17,371.0	89.87	0.29	7,698.1	9,121.2	1,310.9	9,214.6	0.78	0.00	-0.78	
17,460.0	90.57	0.64	7,697.7	9,210.2	1,311.7	9,302.9	0.88	0.79	0.39	
17,549.0	89.34	1.52	7,697.8	9,299.2	1,313.3	9,391.3	1.70	-1.38	0.99	
17,639.0	90.31	2.57	7,698.1	9,389.1	1,316.6	9,480.8	1.59	1.08	1.17	
17,728.0	89.78	1.16	7,698.0	9,478.1	1,319.5	9,569.4	1.69	-0.60	-1.58	
17,818.0	89.25	359.76	7,698.8	9,568.1	1,320.2	9,658.7	1.66	-0.59	-1.56	
17,875.0	88.99	359.58	7,699.6	9,625.1	1,319.8	9,715.1	0.55	-0.46	-0.32	
17,898.0	88.90	359.41	7,700.0	9,648.1	1,319.6	9,737.9	0.84	-0.39	-0.74	
17,960.0	88.90	359.41	7,701.2	9,710.0	1,319.0	9,799.2	0.00	0.00	0.00	

Survey Annotations					
Measured Depth (ft)	Vertical Depth (ft)	Local Coordinates		Comment	
		+N/-S (ft)	+E/-W (ft)		
8,305.0	7,750.4	58.3	1,297.8	TPZ - 460'FSL & 2136'FEL, Sec.20	

Checked By: _____	Approved By: _____	Date: _____
-------------------	--------------------	-------------