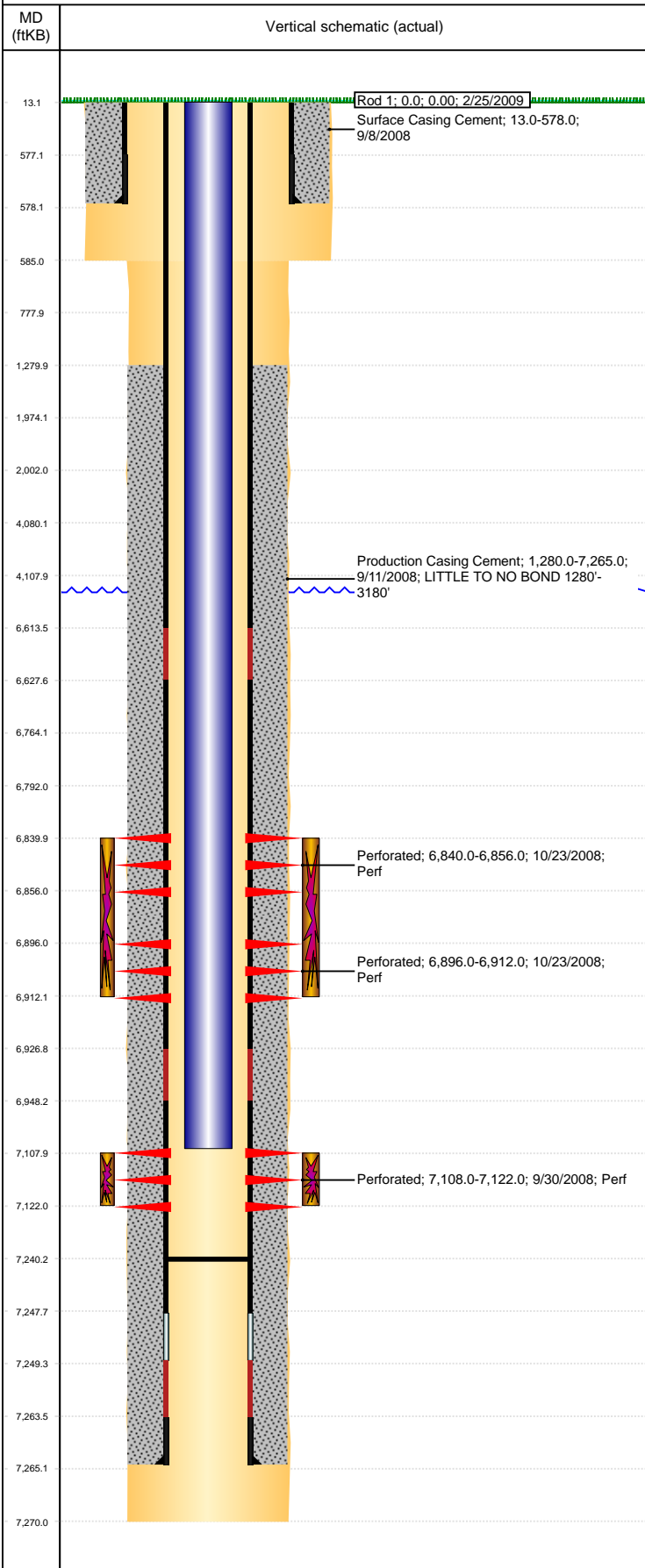


Well Name: LDS D09-31D

VERTICAL, ORIGINAL HOLE, 6/7/2021 2:15:58 PM



Well Header									
API 05-123-27118		Business Unit DJ BASIN			District 15		Well Config VERTICAL		
KB - GL / MSL (ft... 13.00		Spud Date 9/5/2008		P & A Date		Well Production Status SI			SoRT No
Comment									
Surface Location (Congressional)									
Qtr 3 NE	Qtr 4 NE	Section 8	Twnshp 3	Twnsh... N	Range 64	Rng E... W	Actual Latitude (°) 40.24662007	Actual Longitude (°) -104.56609932	
Wellbore Sections									
Section Des			Size (in)			Act Top, MD (ftKB)		Act Btm, MD (ftKB)	
SURFACE			12 1/4			13		585	
PRODUCTION			7 7/8			585		7,270	
Casing Strings									
Csg Des			Run Date		OD (in)	Wt/Len (lb/ft)	Grade	Top, MD (ftKB)	MD (ftKB)
Surface			9/8/2008		8 5/8	24.00	J-55	13.0	578.0
Production			9/10/2008		4 1/2	11.60	M-80	13.0	7,265.0
Cement									
Des					Start Date		Top (ftKB)		Btm (ftKB)
Surface Casing Cement					9/8/2008		13.0		578.0
Production Casing Cement					9/11/2008		1,280.0		7,265.0
Zone Statuses									
Zone Name	Status Date	Status	Fluid Type	Job				Prod Method	
CODELL	10/27/2008	PR	Water	DRILLING/COMPLETION - ORIGINAL, 9/5/2008...				Flowing	
CODELL	2/5/2010	PR							
NIOBRARA	2/5/2010	PR							
NIOBRARA	3/10/2017	SI						Flowing	
Perforation Data									
Linked Zone		Bnch/Stg	Entered Shot Total	Top (ftKB)		Btm (ftKB)		Date	
NIOBRARA, ORIGINAL HOLE		A	32	6,840.00		6,856.00		10/23/2008	
NIOBRARA, ORIGINAL HOLE		B	32	6,896.00		6,912.00		10/23/2008	
CODELL, ORIGINAL HOLE			56	7,108.00		7,122.00		9/30/2008	
Stimulation Intervals									
Zone				Start Date		Top (ftKB)		Btm (ftKB)	
NIOBRARA, ORIGINAL HOLE				10/23/2008		6,840.0		6,912.0	
CODELL, ORIGINAL HOLE				10/23/2008		7,108.0		7,122.0	
Other In Hole									
Run Date	Des				Make	OD (in)	Top (ftKB)	Btm (ftKB)	
Logs									
Date		Type					Top, MD (ftKB)		Btm, MD (ftKB)
9/18/2008		CBL/CCL/GR					0.0		7,222.0
9/18/2008		PULSED NEUTRON					520.0		7,238.0
Plug Back Total Depths									
Date		Type		Com					Depth (ftKB)
2/27/2009		FILL							7,032.0
2/28/2009		PLUG REMNANTS		118' OF RAT HOLE					7,240.0