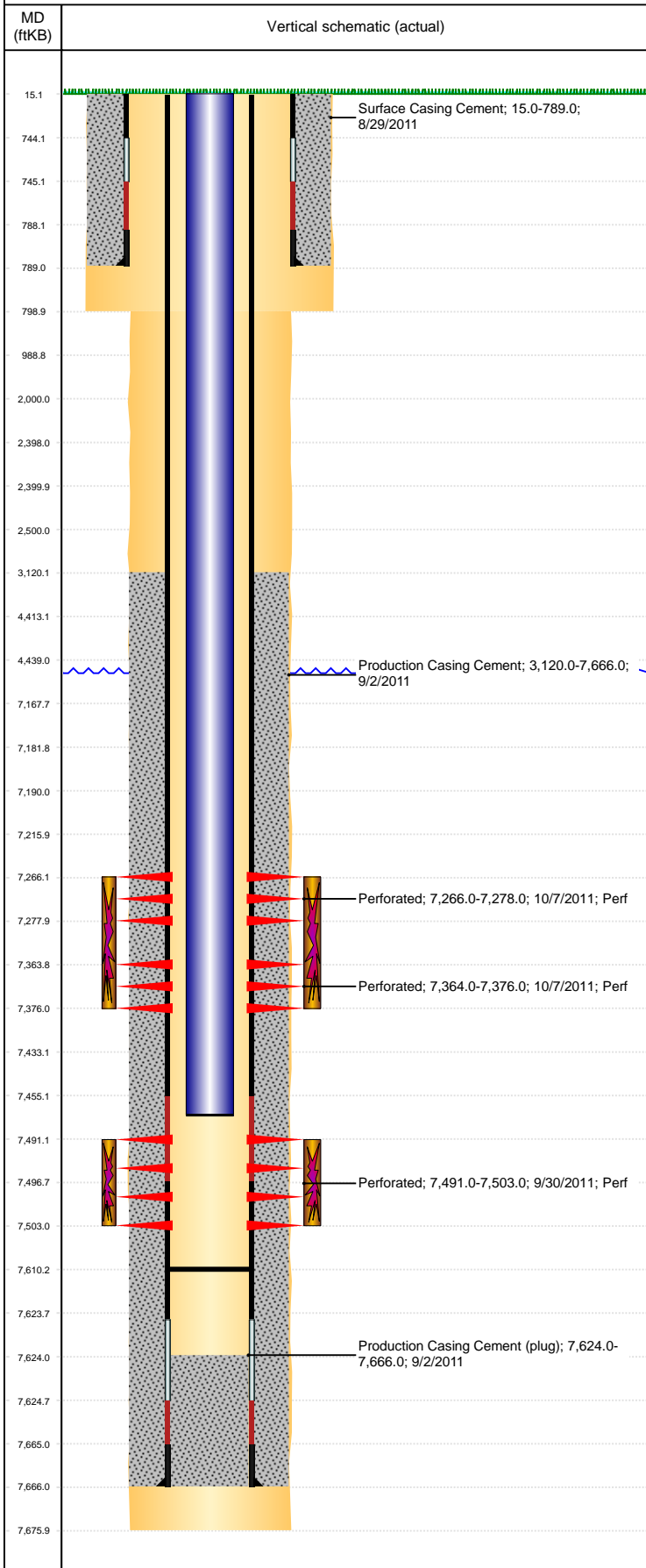


**Well Name: DECHANT D18-27D**

DEVIATED, ORIGINAL HOLE, 6/7/2021 1:19:55 PM



Well Header									
API 05-123-33991		Business Unit DJ BASIN			District 15		Well Config DEVIATED		
KB - GL / MSL (ft... 15.00		Spud Date 8/28/2011		P & A Date		Well Production Status PR			SoRT No
Comment									
Surface Location (Congressional)									
Qtr 3 SE	Qtr 4 SW	Section 7	Twnshp 3	Twنش... N	Range 64	Rng E... W	Actual Latitude (°) 40.23416900	Actual Longitude (°) -104.59605083	
Wellbore Sections									
Section Des			Size (in)			Act Top, MD (ftKB)		Act Btm, MD (ftKB)	
SURFACE			12 1/4			15		799	
PRODUCTION			7 7/8			799		7,676	
Casing Strings									
Csg Des			Run Date		OD (in)	Wt/Len (lb/ft)	Grade	Top, MD (ftKB)	MD (ftKB)
Surface			8/29/2011		8 5/8	24.00	J-55	15.0	789.0
Production			9/2/2011		4 1/2	11.60	M-80	15.0	7,666.0
Cement									
Des					Start Date		Top (ftKB)		Btm (ftKB)
Surface Casing Cement					8/29/2011		15.0		789.0
Production Casing Cement					9/2/2011		3,120.0		7,666.0
Zone Statuses									
Zone Name	Status Date	Status	Fluid Type	Job				Prod Method	
NIOBRARA	10/20/2011	PR		DRILLING/COMPLETION - ORIGINAL, 8/28/2011...					
CODELL	10/20/2011	PR		DRILLING/COMPLETION - ORIGINAL, 8/28/2011...					
Perforation Data									
Linked Zone		Bnch/Stg	Entered Shot Total	Top (ftKB)		Btm (ftKB)		Date	
NIOBRARA, ORIGINAL HOLE		B	24	7,266.00		7,278.00		10/7/2011	
NIOBRARA, ORIGINAL HOLE		C	24	7,364.00		7,376.00		10/7/2011	
CODELL, ORIGINAL HOLE			48	7,491.00		7,503.00		9/30/2011	
Stimulation Intervals									
Zone				Start Date		Top (ftKB)		Btm (ftKB)	
NIOBRARA, ORIGINAL HOLE				10/7/2011		7,266.0		7,376.0	
CODELL, ORIGINAL HOLE				10/7/2011		7,491.0		7,503.0	
Other In Hole									
Run Date	Des			Make		OD (in)	Top (ftKB)	Btm (ftKB)	
Logs									
Date		Type				Top, MD (ftKB)		Btm, MD (ftKB)	
9/2/2011		Caliper/Comp. Density/Neutron/GR/SP/ML				789.0		7,677.0	
9/2/2011		DIL/GR/SP/Caliper				789.0		7,677.0	
9/19/2011		CBL/CCL/GR				1,370.0		7,587.0	
3/8/2017		GYRO				0.0		7,400.0	
Plug Back Total Depths									
Date		Type		Com				Depth (ftKB)	
9/19/2011		FILL		DEPTH LOGGER				7,588.0	
12/12/2011		FILL		DRILLED OUT CFTP AND C/O SAND TO 7610.14' KB AND DID...				7,610.1	