



BAYSWATER
EXPLORATION & PRODUCTION, LLC

Bayswater Exploration & Production, LLC

SEC.19-T7N-R65W

Calvary Farms Pad SEC.19-7N-65W

Calvary Farms 2

Wellbore #1 Calvary Farms 2

Survey: Survey #1

Standard Survey Report

25 March, 2021



**directional
drilling**

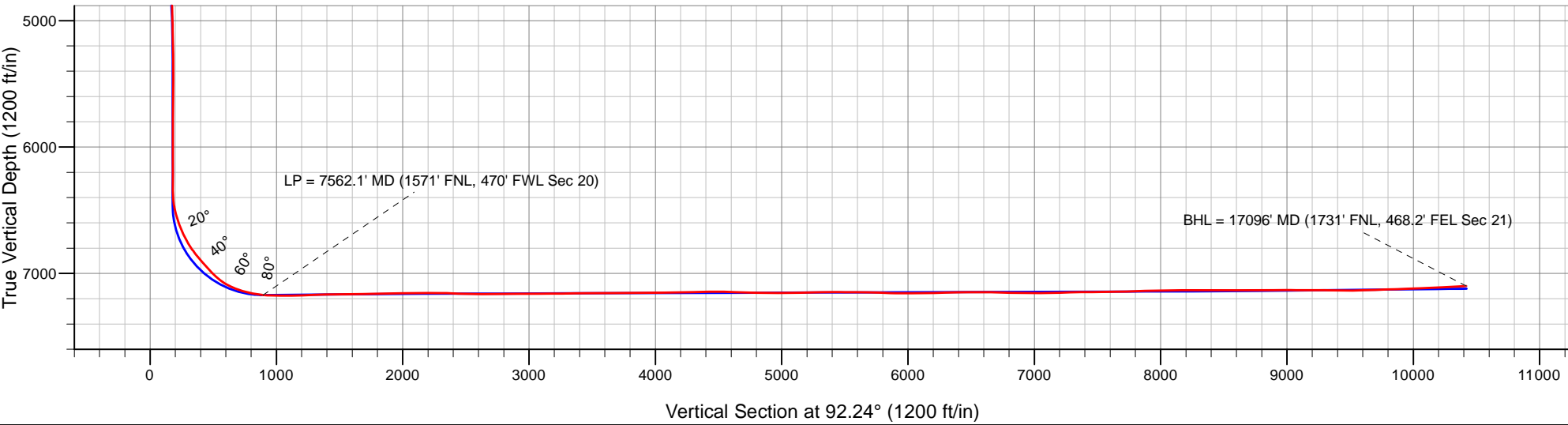
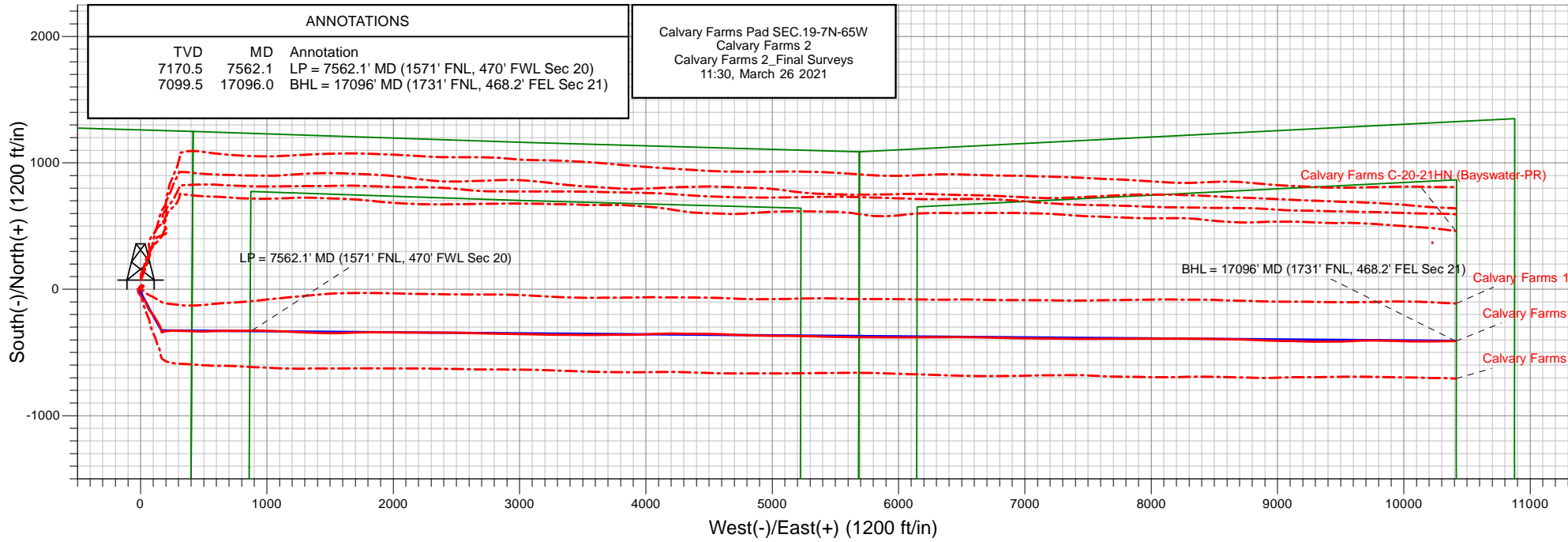
Bayswater Exploration & Production, LLC



Well Name: Calvary Farms 2
Surface Location: Calvary Farms Pad SEC.19-7N-65W
North American Datum 1983 , US State Plane 1983, Colorado Northern Zone
Ground Elevation: 4878.0
+N/-S +E/-W Northing Easting Latitude Longitude Slot
0.0 0.0 1449443.14 3222814.63 40.564355 -104.698022
Original Well Elev RKB @ 4901.0ft (Original Well Elev)

FINAL SURVEY

Projected Bottom Hole Location
17096' MD 7099.5' TVD 1731' FNL, 468.2' FEL Sec 21
93.22° INC @ 89.53° AZM



Company:	Bayswater Exploration & Production, LLC	Local Co-ordinate Reference:	Well Calvary Farms 2
Project:	SEC.19-T7N-R65W	TVD Reference:	RKB @ 4901.0ft (Original Well Elev)
Site:	Calvary Farms Pad SEC.19-7N-65W	MD Reference:	RKB @ 4901.0ft (Original Well Elev)
Well:	Calvary Farms 2	North Reference:	True
Wellbore:	Wellbore #1 Calvary Farms 2	Survey Calculation Method:	Minimum Curvature
Design:	Calvary Farms 2_Final Surveys	Database:	US_EDM

Project	SEC.19-T7N-R65W		
Map System:	US State Plane 1983	System Datum:	Mean Sea Level
Geo Datum:	North American Datum 1983		
Map Zone:	Colorado Northern Zone		Using geodetic scale factor

Site	Calvary Farms Pad SEC.19-7N-65W		
Site Position:		Northing:	1,449,458.09 usft
From:	Lat/Long	Easting:	3,222,815.05 usft
Position Uncertainty:	0.0 ft	Slot Radius:	13-3/16 "
		Latitude:	40.564396
		Longitude:	-104.698020
		Grid Convergence:	0.52 °

Well	Calvary Farms 2		
Well Position	+N-S	0.0 ft	Northing: 1,449,443.14 usft
	+E-W	0.0 ft	Easting: 3,222,814.63 usft
Position Uncertainty	0.0 ft	Wellhead Elevation:	0.0 ft
		Latitude:	40.564355
		Longitude:	-104.698022
		Ground Level:	4,878.0 ft

Wellbore	Wellbore #1 Calvary Farms 2				
Magnetics	Model Name	Sample Date	Declination (°)	Dip Angle (°)	Field Strength (nT)
	HDGM	03/09/2021	7.80	66.85	52,062

Design	Calvary Farms 2_Final Surveys				
Audit Notes:					
Version:	1.0	Phase:	ACTUAL	Tie On Depth:	0.0
Vertical Section:	Depth From (TVD) (ft)	+N-S (ft)	+E-W (ft)	Direction (°)	
	0.0	0.0	0.0	92.24	

Survey Program	Date	03/25/2021			
From (ft)	To (ft)	Survey (Wellbore)	Tool Name	Description	
205.0	17,096.0	Survey #1 (Wellbore #1 Calvary Farms 2)	MWD	MWD - Standard	

Survey									
Measured Depth (ft)	Inclination (°)	Azimuth (°)	Vertical Depth (ft)	+N-S (ft)	+E-W (ft)	Vertical Section (ft)	Dogleg Rate (°/100usft)	Build Rate (°/100usft)	Turn Rate (°/100usft)
0.0	0.00	0.00	0.0	0.0	0.0	0.0	0.00	0.00	0.00
205.0	0.26	267.60	205.0	0.0	-0.5	-0.5	0.13	0.13	0.00
295.0	0.18	268.48	295.0	0.0	-0.8	-0.8	0.09	-0.09	0.98
384.0	0.53	272.18	384.0	0.0	-1.4	-1.4	0.39	0.39	4.16
474.0	0.62	257.76	474.0	-0.1	-2.3	-2.2	0.19	0.10	-16.02
562.0	0.70	269.71	562.0	-0.2	-3.3	-3.2	0.18	0.09	13.58
652.0	0.79	270.24	652.0	-0.2	-4.4	-4.4	0.10	0.10	0.59
741.0	0.88	269.89	741.0	-0.2	-5.7	-5.7	0.10	0.10	-0.39
831.0	0.88	283.25	831.0	-0.1	-7.1	-7.1	0.23	0.00	14.84
920.0	1.23	285.89	919.9	0.4	-8.7	-8.7	0.40	0.39	2.97

Company:	Bayswater Exploration & Production, LLC	Local Co-ordinate Reference:	Well Calvary Farms 2
Project:	SEC.19-T7N-R65W	TVD Reference:	RKB @ 4901.0ft (Original Well Elev)
Site:	Calvary Farms Pad SEC.19-7N-65W	MD Reference:	RKB @ 4901.0ft (Original Well Elev)
Well:	Calvary Farms 2	North Reference:	True
Wellbore:	Wellbore #1 Calvary Farms 2	Survey Calculation Method:	Minimum Curvature
Design:	Calvary Farms 2_Final Surveys	Database:	US_EDM

Survey

Measured Depth (ft)	Inclination (°)	Azimuth (°)	Vertical Depth (ft)	+N/-S (ft)	+E/-W (ft)	Vertical Section (ft)	Dogleg Rate (°/100usft)	Build Rate (°/100usft)	Turn Rate (°/100usft)
1,010.0	1.67	283.78	1,009.9	0.9	-10.9	-10.9	0.49	0.49	-2.34
1,099.0	2.29	283.43	1,098.9	1.7	-13.9	-13.9	0.70	0.70	-0.39
1,188.0	1.67	272.35	1,187.8	2.1	-16.9	-17.0	0.82	-0.70	-12.45
1,278.0	1.49	258.82	1,277.8	2.0	-19.3	-19.4	0.46	-0.20	-15.03
1,368.0	0.88	20.63	1,367.8	2.4	-20.3	-20.3	2.32	-0.68	135.34
1,458.0	1.85	55.26	1,457.7	3.9	-18.8	-18.9	1.37	1.08	38.48
1,511.0	1.93	57.72	1,510.7	4.8	-17.4	-17.5	0.21	0.15	4.64
1,685.0	2.08	47.04	1,684.6	8.5	-12.6	-12.9	0.23	0.09	-6.14
1,775.0	1.28	117.35	1,774.6	9.2	-10.5	-10.8	2.27	-0.89	78.12
1,864.0	1.13	235.66	1,863.6	8.2	-10.3	-10.6	2.33	-0.17	132.93
1,953.0	3.02	240.65	1,952.5	6.6	-13.1	-13.3	2.13	2.12	5.61
2,042.0	5.10	216.85	2,041.3	2.3	-17.5	-17.6	2.96	2.34	-26.74
2,132.0	6.90	188.10	2,130.8	-6.3	-20.7	-20.4	3.83	2.00	-31.94
2,221.0	8.44	171.71	2,219.0	-18.0	-20.5	-19.8	2.99	1.73	-18.42
2,311.0	9.15	149.30	2,308.0	-30.7	-15.9	-14.7	3.86	0.79	-24.90
2,400.0	9.71	140.79	2,395.8	-42.6	-7.5	-5.8	1.69	0.63	-9.56
2,489.0	9.37	141.98	2,483.5	-54.2	1.7	3.8	0.44	-0.38	1.34
2,578.0	8.97	141.66	2,571.4	-65.3	10.5	13.0	0.45	-0.45	-0.36
2,668.0	8.56	141.81	2,660.4	-76.1	19.0	21.9	0.46	-0.46	0.17
2,757.0	8.37	142.14	2,748.4	-86.4	27.0	30.4	0.22	-0.21	0.37
2,846.0	7.95	141.33	2,836.5	-96.3	34.8	38.6	0.49	-0.47	-0.91
2,935.0	8.59	154.54	2,924.6	-107.1	41.5	45.7	2.25	0.72	14.84
3,046.0	8.54	157.85	3,034.3	-122.2	48.2	53.0	0.45	-0.05	2.98
3,135.0	8.32	158.22	3,122.4	-134.3	53.1	58.3	0.25	-0.25	0.42
3,225.0	8.13	157.70	3,211.4	-146.3	57.9	63.6	0.23	-0.21	-0.58
3,314.0	7.36	147.70	3,299.6	-156.9	63.4	69.5	1.74	-0.87	-11.24
3,403.0	6.81	143.25	3,388.0	-166.0	69.6	76.0	0.87	-0.62	-5.00
3,492.0	6.17	141.80	3,476.4	-174.0	75.7	82.4	0.74	-0.72	-1.63
3,581.0	5.39	141.11	3,564.9	-181.0	81.3	88.3	0.88	-0.88	-0.78
3,671.0	6.14	138.82	3,654.5	-187.9	87.1	94.4	0.87	0.83	-2.54
3,760.0	6.27	139.56	3,743.0	-195.2	93.4	100.9	0.17	0.15	0.83
3,850.0	6.88	142.83	3,832.4	-203.2	99.8	107.7	0.80	0.68	3.63
3,939.0	7.32	145.13	3,920.7	-212.1	106.3	114.5	0.59	0.49	2.58
4,029.0	7.61	148.63	4,009.9	-221.9	112.7	121.3	0.60	0.32	3.89
4,119.0	7.70	149.18	4,099.1	-232.2	118.9	127.8	0.13	0.10	0.61
4,209.0	7.88	150.35	4,188.3	-242.7	125.0	134.4	0.27	0.20	1.30
4,298.0	7.63	151.43	4,276.5	-253.2	130.8	140.6	0.33	-0.28	1.21
4,388.0	7.17	150.85	4,365.7	-263.3	136.4	146.6	0.52	-0.51	-0.64
4,477.0	6.81	150.29	4,454.1	-272.8	141.8	152.3	0.41	-0.40	-0.63
4,566.0	6.37	148.04	4,542.5	-281.5	147.0	157.9	0.57	-0.49	-2.53
4,656.0	6.87	158.12	4,631.9	-290.8	151.6	162.9	1.40	0.56	11.20
4,746.0	6.89	160.75	4,721.2	-300.9	155.4	167.1	0.35	0.02	2.92
4,836.0	6.60	160.75	4,810.6	-310.8	158.9	170.9	0.32	-0.32	0.00
4,925.0	5.17	161.97	4,899.1	-319.5	161.8	174.2	1.61	-1.61	1.37

Company:	Bayswater Exploration & Production, LLC	Local Co-ordinate Reference:	Well Calvary Farms 2
Project:	SEC.19-T7N-R65W	TVD Reference:	RKB @ 4901.0ft (Original Well Elev)
Site:	Calvary Farms Pad SEC.19-7N-65W	MD Reference:	RKB @ 4901.0ft (Original Well Elev)
Well:	Calvary Farms 2	North Reference:	True
Wellbore:	Wellbore #1 Calvary Farms 2	Survey Calculation Method:	Minimum Curvature
Design:	Calvary Farms 2_Final Surveys	Database:	US_EDM

Survey

Measured Depth (ft)	Inclination (°)	Azimuth (°)	Vertical Depth (ft)	+N/-S (ft)	+E/-W (ft)	Vertical Section (ft)	Dogleg Rate (°/100usft)	Build Rate (°/100usft)	Turn Rate (°/100usft)
5,015.0	4.76	166.11	4,988.8	-327.0	164.0	176.6	0.60	-0.46	4.60
5,104.0	3.29	158.64	5,077.6	-332.9	165.8	178.7	1.75	-1.65	-8.39
5,194.0	3.00	153.96	5,167.4	-337.5	167.8	180.8	0.43	-0.32	-5.20
5,283.0	1.22	146.27	5,256.4	-340.3	169.3	182.5	2.02	-2.00	-8.64
5,372.0	0.84	119.78	5,345.4	-341.4	170.4	183.6	0.67	-0.43	-29.76
5,462.0	0.39	271.41	5,435.4	-341.8	170.7	183.9	1.33	-0.50	168.48
5,551.0	0.41	328.43	5,524.4	-341.5	170.2	183.4	0.43	0.02	64.07
5,641.0	0.51	315.86	5,614.4	-340.9	169.8	183.0	0.16	0.11	-13.97
5,730.0	0.76	316.95	5,703.4	-340.2	169.1	182.3	0.28	0.28	1.22
5,819.0	0.80	335.06	5,792.3	-339.2	168.4	181.6	0.28	0.04	20.35
5,909.0	0.43	325.76	5,882.3	-338.4	168.0	181.1	0.42	-0.41	-10.33
5,999.0	0.51	330.05	5,972.3	-337.7	167.6	180.7	0.10	0.09	4.77
6,089.0	0.27	348.42	6,062.3	-337.2	167.3	180.4	0.30	-0.27	20.41
6,179.0	0.31	349.58	6,152.3	-336.7	167.2	180.3	0.04	0.04	1.29
6,268.0	0.32	10.68	6,241.3	-336.3	167.2	180.3	0.13	0.01	23.71
6,358.0	0.22	31.40	6,331.3	-335.9	167.4	180.4	0.15	-0.11	23.02
6,447.0	5.08	83.63	6,420.2	-335.3	171.4	184.4	5.56	5.46	58.69
6,537.0	13.92	86.18	6,508.9	-334.1	186.2	199.1	9.83	9.82	2.83
6,627.0	20.00	80.64	6,594.9	-330.9	212.2	225.0	6.98	6.76	-6.16
6,716.0	23.72	87.96	6,677.5	-327.8	245.1	257.8	5.17	4.18	8.22
6,806.0	30.80	91.59	6,757.5	-327.8	286.3	298.9	8.08	7.87	4.03
6,895.0	37.20	92.00	6,831.2	-329.3	336.0	348.6	7.20	7.19	0.46
6,984.0	40.71	92.96	6,900.4	-331.8	391.9	404.6	4.00	3.94	1.08
7,073.0	42.74	91.63	6,966.9	-334.1	451.1	463.8	2.49	2.28	-1.49
7,163.0	47.55	87.67	7,030.3	-333.7	514.8	527.5	6.19	5.34	-4.40
7,252.0	60.10	87.68	7,082.8	-330.7	586.5	599.0	14.10	14.10	0.01
7,341.0	69.18	89.47	7,120.8	-328.8	666.8	679.1	10.36	10.20	2.01
7,431.0	75.85	89.80	7,147.9	-328.3	752.6	764.9	7.42	7.41	0.37
7,521.0	81.50	89.51	7,165.5	-327.7	840.8	853.0	6.29	6.28	-0.32
7,562.1	84.64	89.88	7,170.5	-327.5	881.6	893.7	7.70	7.64	0.91
LP = (1571' FNL, 470' FWL Sec 20)									
7,611.0	88.38	90.32	7,173.5	-327.6	930.4	942.5	7.70	7.64	0.90
7,699.0	88.97	91.89	7,175.5	-329.3	1,018.3	1,030.4	1.91	0.67	1.78
7,789.0	90.92	92.60	7,175.6	-332.8	1,108.3	1,120.4	2.31	2.17	0.79
7,878.0	91.94	92.71	7,173.4	-336.9	1,197.1	1,209.4	1.15	1.15	0.12
7,968.0	92.58	92.66	7,169.8	-341.1	1,287.0	1,299.3	0.71	0.71	-0.06
8,057.0	91.64	92.00	7,166.5	-344.8	1,375.8	1,388.3	1.29	-1.06	-0.74
8,146.0	90.84	91.22	7,164.6	-347.3	1,464.8	1,477.3	1.26	-0.90	-0.88
8,236.0	90.57	89.25	7,163.5	-347.6	1,554.8	1,567.2	2.21	-0.30	-2.19
8,325.0	90.53	87.05	7,162.7	-344.8	1,643.7	1,655.9	2.47	-0.04	-2.47
8,415.0	90.43	88.97	7,161.9	-341.6	1,733.7	1,745.7	2.14	-0.11	2.13
8,505.0	90.98	89.24	7,160.8	-340.2	1,823.6	1,835.6	0.68	0.61	0.30
8,594.0	91.64	90.31	7,158.8	-339.9	1,912.6	1,924.4	1.41	0.74	1.20

Company:	Bayswater Exploration & Production, LLC	Local Co-ordinate Reference:	Well Calvary Farms 2
Project:	SEC.19-T7N-R65W	TVD Reference:	RKB @ 4901.0ft (Original Well Elev)
Site:	Calvary Farms Pad SEC.19-7N-65W	MD Reference:	RKB @ 4901.0ft (Original Well Elev)
Well:	Calvary Farms 2	North Reference:	True
Wellbore:	Wellbore #1 Calvary Farms 2	Survey Calculation Method:	Minimum Curvature
Design:	Calvary Farms 2_Final Surveys	Database:	US_EDM

Survey

Measured Depth (ft)	Inclination (°)	Azimuth (°)	Vertical Depth (ft)	+N/-S (ft)	+E/-W (ft)	Vertical Section (ft)	Dogleg Rate (°/100usft)	Build Rate (°/100usft)	Turn Rate (°/100usft)
8,683.0	91.67	91.32	7,156.2	-341.1	2,001.6	2,013.4	1.13	0.03	1.13
8,773.0	90.48	90.49	7,154.5	-342.6	2,091.5	2,103.3	1.61	-1.32	-0.92
8,862.0	89.17	90.14	7,154.8	-343.1	2,180.5	2,192.3	1.52	-1.47	-0.39
8,951.0	90.56	90.71	7,155.0	-343.7	2,269.5	2,281.2	1.69	1.56	0.64
9,041.0	87.60	89.82	7,156.4	-344.1	2,359.5	2,371.2	3.43	-3.29	-0.99
9,129.0	87.36	89.98	7,160.3	-344.0	2,447.4	2,459.0	0.33	-0.27	0.18
9,218.0	89.38	91.21	7,162.8	-344.9	2,536.4	2,547.9	2.66	2.27	1.38
9,307.0	90.02	91.59	7,163.3	-347.1	2,625.3	2,636.9	0.84	0.72	0.43
9,397.0	90.99	91.74	7,162.5	-349.7	2,715.3	2,726.9	1.09	1.08	0.17
9,486.0	89.87	90.79	7,161.8	-351.7	2,804.3	2,815.9	1.65	-1.26	-1.07
9,576.0	89.94	90.34	7,162.0	-352.5	2,894.3	2,905.8	0.51	0.08	-0.50
9,665.0	91.27	91.25	7,161.0	-353.8	2,983.3	2,994.8	1.81	1.49	1.02
9,754.0	90.03	91.35	7,160.0	-355.8	3,072.2	3,083.8	1.40	-1.39	0.11
9,844.0	90.53	91.19	7,159.6	-357.8	3,162.2	3,173.8	0.58	0.56	-0.18
9,933.0	90.71	90.99	7,158.6	-359.5	3,251.2	3,262.8	0.30	0.20	-0.22
10,022.0	90.34	90.50	7,157.8	-360.6	3,340.2	3,351.7	0.69	-0.42	-0.55
10,111.0	90.70	90.58	7,157.0	-361.5	3,429.2	3,440.7	0.41	0.40	0.09
10,201.0	90.39	89.90	7,156.2	-361.9	3,519.2	3,530.6	0.83	-0.34	-0.76
10,290.0	90.81	89.65	7,155.2	-361.5	3,608.1	3,619.5	0.55	0.47	-0.28
10,379.0	89.99	88.71	7,154.6	-360.2	3,697.1	3,708.4	1.40	-0.92	-1.06
10,468.0	90.60	90.49	7,154.1	-359.6	3,786.1	3,797.3	2.11	0.69	2.00
10,558.0	90.32	89.72	7,153.4	-359.8	3,876.1	3,887.2	0.91	-0.31	-0.86
10,647.0	90.29	87.94	7,152.9	-358.0	3,965.1	3,976.1	2.00	-0.03	-2.00
10,737.0	90.45	87.45	7,152.4	-354.3	4,055.0	4,065.8	0.57	0.18	-0.54
10,827.0	91.15	88.83	7,151.1	-351.4	4,145.0	4,155.5	1.72	0.78	1.53
10,916.0	91.93	90.81	7,148.7	-351.1	4,233.9	4,244.4	2.39	0.88	2.22
11,006.0	90.74	90.04	7,146.6	-351.8	4,323.9	4,334.4	1.57	-1.32	-0.86
11,095.0	91.13	90.27	7,145.2	-352.0	4,412.9	4,423.3	0.51	0.44	0.26
11,185.0	90.23	91.24	7,144.1	-353.2	4,502.9	4,513.2	1.47	-1.00	1.08
11,274.0	87.85	92.38	7,145.6	-356.0	4,591.8	4,602.2	2.96	-2.67	1.28
11,364.0	87.22	92.53	7,149.5	-359.9	4,681.6	4,692.1	0.72	-0.70	0.17
11,454.0	88.64	91.74	7,152.7	-363.2	4,771.5	4,782.1	1.81	1.58	-0.88
11,543.0	90.04	91.65	7,153.7	-365.9	4,860.5	4,871.1	1.58	1.57	-0.10
11,633.0	90.03	90.80	7,153.7	-367.8	4,950.4	4,961.0	0.94	-0.01	-0.94
11,722.0	90.29	90.35	7,153.4	-368.7	5,039.4	5,050.0	0.58	0.29	-0.51
11,812.0	91.03	90.35	7,152.4	-369.2	5,129.4	5,140.0	0.82	0.82	0.00
11,901.0	91.82	90.14	7,150.2	-369.6	5,218.4	5,228.9	0.92	0.89	-0.24
11,991.0	90.78	91.44	7,148.1	-370.9	5,308.4	5,318.8	1.85	-1.16	1.44
12,081.0	90.42	92.11	7,147.2	-373.7	5,398.3	5,408.8	0.85	-0.40	0.74
12,172.0	88.92	91.44	7,147.7	-376.5	5,489.3	5,499.8	1.81	-1.65	-0.74
12,260.0	89.78	91.22	7,148.7	-378.5	5,577.2	5,587.8	1.01	0.98	-0.25
12,350.0	88.86	90.13	7,149.8	-379.6	5,667.2	5,677.7	1.58	-1.02	-1.21
12,439.0	88.02	90.09	7,152.2	-379.7	5,756.2	5,766.6	0.94	-0.94	-0.04
12,528.0	88.29	90.30	7,155.1	-380.0	5,845.1	5,855.5	0.38	0.30	0.24

Company:	Bayswater Exploration & Production, LLC	Local Co-ordinate Reference:	Well Calvary Farms 2
Project:	SEC.19-T7N-R65W	TVD Reference:	RKB @ 4901.0ft (Original Well Elev)
Site:	Calvary Farms Pad SEC.19-7N-65W	MD Reference:	RKB @ 4901.0ft (Original Well Elev)
Well:	Calvary Farms 2	North Reference:	True
Wellbore:	Wellbore #1 Calvary Farms 2	Survey Calculation Method:	Minimum Curvature
Design:	Calvary Farms 2_Final Surveys	Database:	US_EDM

Survey

Measured Depth (ft)	Inclination (°)	Azimuth (°)	Vertical Depth (ft)	+N/-S (ft)	+E/-W (ft)	Vertical Section (ft)	Dogleg Rate (°/100usft)	Build Rate (°/100usft)	Turn Rate (°/100usft)
12,616.0	89.81	90.26	7,156.5	-380.5	5,933.1	5,943.5	1.73	1.73	-0.05
12,705.0	90.46	90.42	7,156.3	-381.0	6,022.1	6,032.4	0.75	0.73	0.18
12,794.0	90.81	89.77	7,155.3	-381.2	6,111.1	6,121.4	0.83	0.39	-0.73
12,883.0	91.32	89.69	7,153.7	-380.7	6,200.1	6,210.3	0.58	0.57	-0.09
12,972.0	91.81	89.58	7,151.3	-380.2	6,289.1	6,299.1	0.56	0.55	-0.12
13,061.0	91.33	89.46	7,148.8	-379.4	6,378.0	6,388.0	0.56	-0.54	-0.13
13,150.0	89.78	90.11	7,148.0	-379.1	6,467.0	6,476.9	1.89	-1.74	0.73
13,239.0	90.46	90.83	7,147.8	-379.8	6,556.0	6,565.9	1.11	0.76	0.81
13,329.0	89.14	90.03	7,148.1	-380.5	6,646.0	6,655.8	1.71	-1.47	-0.89
13,418.0	88.10	93.14	7,150.2	-383.0	6,734.9	6,744.8	3.68	-1.17	3.49
13,508.0	88.28	90.29	7,153.1	-385.6	6,824.8	6,834.7	3.17	0.20	-3.17
13,597.0	89.45	90.74	7,154.8	-386.4	6,913.8	6,923.7	1.41	1.31	0.51
13,687.0	90.48	90.27	7,154.9	-387.2	7,003.8	7,013.6	1.26	1.14	-0.52
13,776.0	91.06	90.34	7,153.7	-387.7	7,092.8	7,102.5	0.66	0.65	0.08
13,866.0	91.89	91.05	7,151.4	-388.8	7,182.8	7,192.5	1.21	0.92	0.79
13,955.0	91.40	90.96	7,148.8	-390.4	7,271.7	7,281.4	0.56	-0.55	-0.10
14,045.0	90.50	90.90	7,147.3	-391.8	7,361.7	7,371.4	1.00	-1.00	-0.07
14,135.0	90.22	90.26	7,146.8	-392.7	7,451.7	7,461.4	0.78	-0.31	-0.71
14,313.0	91.11	88.86	7,144.7	-391.4	7,629.7	7,639.1	0.93	0.50	-0.79
14,403.0	91.07	90.16	7,143.0	-390.6	7,719.6	7,729.0	1.44	-0.04	1.44
14,492.0	91.97	90.43	7,140.6	-391.1	7,808.6	7,817.9	1.06	1.01	0.30
14,582.0	91.95	91.29	7,137.5	-392.4	7,898.5	7,907.9	0.96	-0.02	0.96
14,761.0	90.83	88.47	7,133.2	-392.0	8,077.5	8,086.6	1.69	-0.63	-1.58
14,850.0	90.10	89.62	7,132.5	-390.5	8,166.5	8,175.5	1.53	-0.82	1.29
14,940.0	90.41	89.62	7,132.1	-389.9	8,256.5	8,265.4	0.34	0.34	0.00
15,029.0	89.50	90.70	7,132.2	-390.2	8,345.5	8,354.3	1.59	-1.02	1.21
15,209.0	89.80	91.30	7,133.3	-393.3	8,525.4	8,534.3	0.37	0.17	0.33
15,299.0	89.82	91.55	7,133.5	-395.6	8,615.4	8,624.3	0.28	0.02	0.28
15,388.0	90.37	91.74	7,133.4	-398.1	8,704.4	8,713.3	0.65	0.62	0.21
15,477.0	90.10	92.10	7,133.0	-401.1	8,793.3	8,802.3	0.51	-0.30	0.40
15,568.0	90.47	92.19	7,132.6	-404.5	8,884.2	8,893.3	0.42	0.41	0.10
15,658.0	90.45	91.78	7,131.9	-407.6	8,974.2	8,983.3	0.46	-0.02	-0.46
15,748.0	89.09	90.36	7,132.2	-409.3	9,064.2	9,073.2	2.18	-1.51	-1.58
15,837.0	90.69	91.94	7,132.4	-411.1	9,153.1	9,162.2	2.53	1.80	1.78
15,926.0	89.59	91.06	7,132.2	-413.4	9,242.1	9,251.2	1.58	-1.24	-0.99
16,016.0	88.26	90.83	7,133.9	-414.9	9,332.1	9,341.2	1.50	-1.48	-0.26
16,195.0	91.09	88.13	7,134.9	-413.3	9,511.0	9,519.9	2.19	1.58	-1.51
16,285.0	91.50	87.79	7,132.8	-410.1	9,600.9	9,609.6	0.59	0.46	-0.38
16,374.0	92.35	87.85	7,129.9	-406.7	9,689.8	9,698.3	0.96	0.96	0.07
16,463.0	91.89	90.53	7,126.6	-405.5	9,778.8	9,787.1	3.05	-0.52	3.01
16,553.0	91.71	91.52	7,123.7	-407.1	9,868.7	9,877.1	1.12	-0.20	1.10
16,642.0	92.52	91.92	7,120.5	-409.7	9,957.6	9,966.0	1.01	0.91	0.45
16,732.0	92.53	91.01	7,116.5	-412.0	10,047.5	10,055.9	1.01	0.01	-1.01

Company:	Bayswater Exploration & Production, LLC	Local Co-ordinate Reference:	Well Calvary Farms 2
Project:	SEC.19-T7N-R65W	TVD Reference:	RKB @ 4901.0ft (Original Well Elev)
Site:	Calvary Farms Pad SEC.19-7N-65W	MD Reference:	RKB @ 4901.0ft (Original Well Elev)
Well:	Calvary Farms 2	North Reference:	True
Wellbore:	Wellbore #1 Calvary Farms 2	Survey Calculation Method:	Minimum Curvature
Design:	Calvary Farms 2_Final Surveys	Database:	US_EDM

Survey										
Measured Depth (ft)	Inclination (°)	Azimuth (°)	Vertical Depth (ft)	+N/-S (ft)	+E/-W (ft)	Vertical Section (ft)	Dogleg Rate (°/100usft)	Build Rate (°/100usft)	Turn Rate (°/100usft)	
16,821.0	92.07	89.75	7,112.9	-412.6	10,136.4	10,144.8	1.51	-0.52	-1.42	
16,912.0	92.58	89.61	7,109.2	-412.1	10,227.3	10,235.6	0.58	0.56	-0.15	
17,026.0	93.22	89.53	7,103.5	-411.3	10,341.2	10,349.3	0.57	0.56	-0.07	
17,096.0	93.22	89.53	7,099.5	-410.7	10,411.1	10,419.2	0.00	0.00	0.00	
BHL = (1731' FNL, 468.2' FEL Sec 21)										

Survey Annotations					
Measured Depth (ft)	Vertical Depth (ft)	Local Coordinates			
		+N/-S (ft)	+E/-W (ft)	Comment	
7,562.1	7,170.5	-327.5	881.6	LP = (1571' FNL, 470' FWL Sec 20)	
17,096.0	7,099.5	-410.7	10,411.1	BHL = (1731' FNL, 468.2' FEL Sec 21)	

Checked By: _____	Approved By: _____	Date: _____
-------------------	--------------------	-------------