



BAYSWATER
EXPLORATION & PRODUCTION, LLC

Bayswater Exploration & Production, LLC

SEC.19-T7N-R65W

Calvary Farms Pad SEC.19-7N-65W

Calvary Farms 1

Wellbore #1 Calvary Farms 1

Design: Calvary Farms 1_Final Surveys

Standard Survey Report

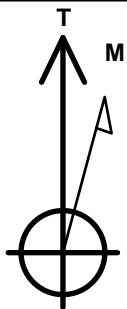
16 March, 2021

Bayswater Exploration & Production, LLC

Calvary Farms 1
Calvary Farms Pad SEC.19-7N-65W
North American Datum 1983 , US State Plane 1983, Colorado Northern Zone
Ground Elevation: 4878.0
+N/-S +E/-W Northing Easting Latitude Longitude Slot
0.0 0.0 1449458.08 3222815.05 40.564396 -104.698020
Original Well Elev RKB @ 4901.0ft (Original Well Elev)

WELLBORE TARGET DETAILS

Name	TVD	+N/-S	+E/-W	Latitude	Longitude	Shape Point
SHL 1248'FNL & 413'FEL SEC.19	0.0	0.0	0.0	40.564396	-104.698020	



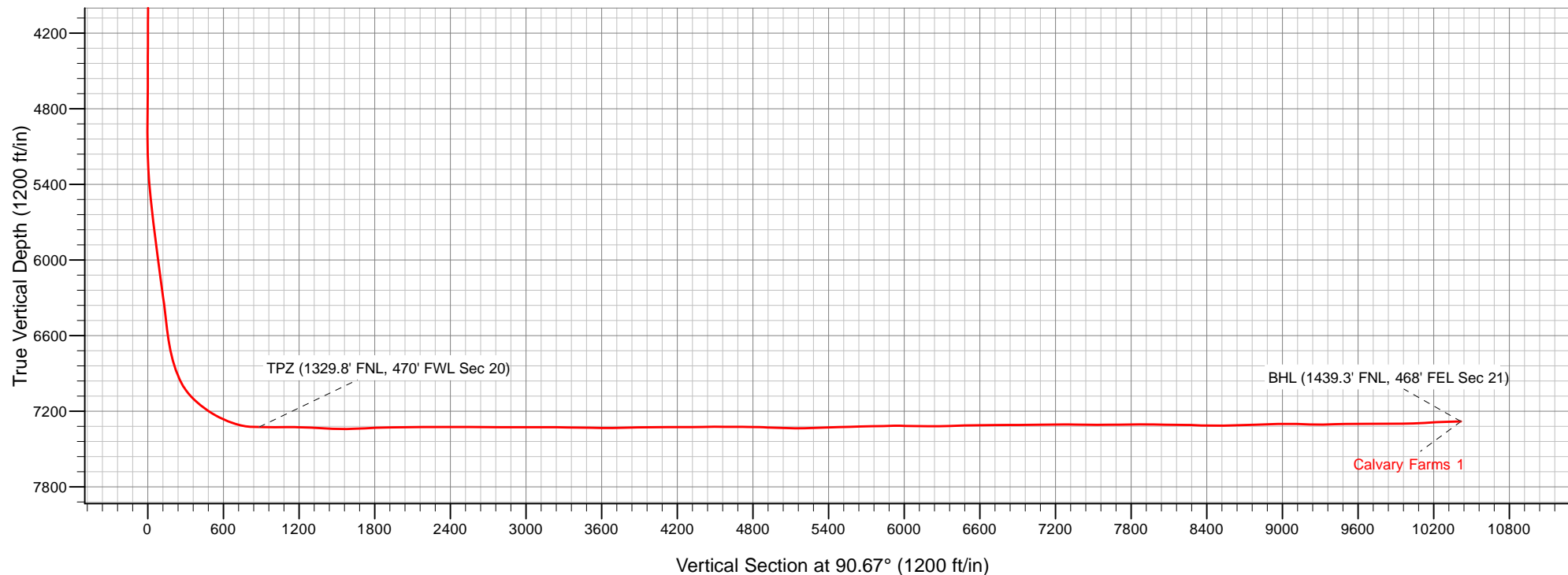
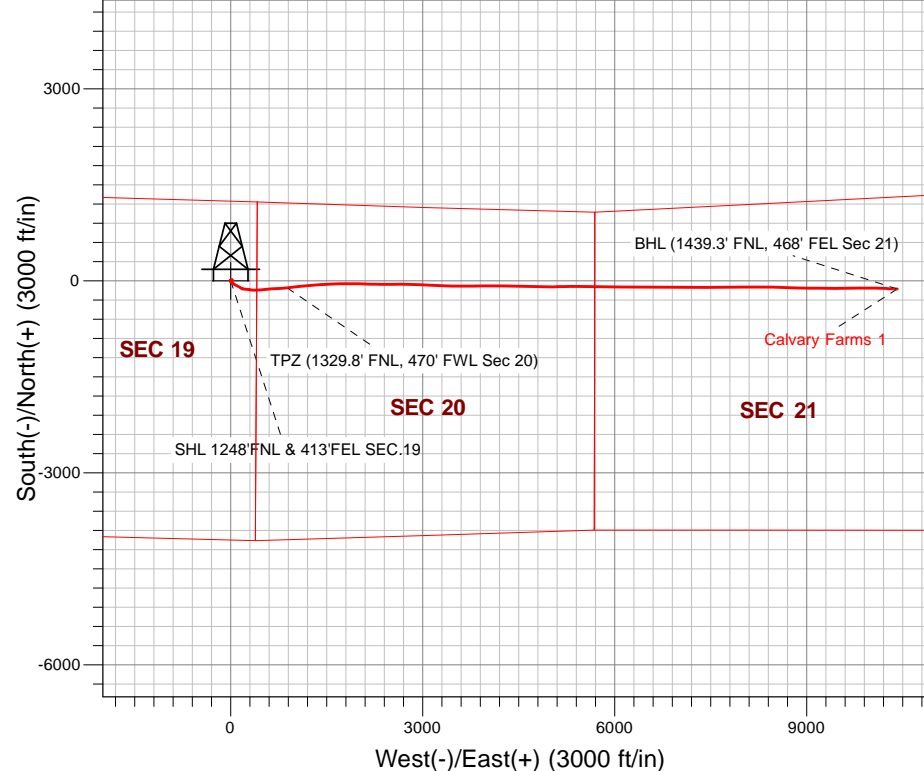
Azimuths to True North
Magnetic North: 7.80°

Magnetic Field
Strength: 52063.4snT
Dip Angle: 66.85°
Date: 03/04/2021
Model: HDGM

Calvary Farms Pad SEC.19-7N-65W
Calvary Farms 1
Calvary Farms 1_Final Surveys
13:25, March 16 2021

ANNOTATIONS

TVD	MD	Annotation
7324.4	7750.8	TPZ (1329.8' FNL, 470' FWL Sec 20)
7280.0	17290.0	BHL (1439.3' FNL, 468' FEL Sec 21)



Company:	Bayswater Exploration & Production, LLC	Local Co-ordinate Reference:	Well Calvary Farms 1
Project:	SEC.19-T7N-R65W	TVD Reference:	RKB @ 4901.0ft (Original Well Elev)
Site:	Calvary Farms Pad SEC.19-7N-65W	MD Reference:	RKB @ 4901.0ft (Original Well Elev)
Well:	Calvary Farms 1	North Reference:	True
Wellbore:	Wellbore #1 Calvary Farms 1	Survey Calculation Method:	Minimum Curvature
Design:	Calvary Farms 1_Final Surveys	Database:	US_EDM

Project	SEC.19-T7N-R65W		
Map System:	US State Plane 1983	System Datum:	Mean Sea Level
Geo Datum:	North American Datum 1983		Using Well Reference Point
Map Zone:	Colorado Northern Zone		Using geodetic scale factor

Site		Calvary Farms Pad SEC.19-7N-65W			
Site Position:		Northing:	1,449,458.09 usft	Latitude:	40.564396
From:	Lat/Long	Easting:	3,222,815.05 usft	Longitude:	-104.698020
Position Uncertainty:	0.0 ft	Slot Radius:	13-3/16 "	Grid Convergence:	0.52 °

Well	Calvary Farms 1					
Well Position	+N/-S	0.0 ft	Northing:	1,449,458.08 usfi	Latitude:	40.564396
	+E/-W	0.0 ft	Easting:	3,222,815.05 usfi	Longitude:	-104.698020
Position Uncertainty		0.0 ft	Wellhead Elevation:	0.0 ft	Ground Level:	4,878.0 ft

Wellbore	Wellbore #1 Calvary Farms 1				
Magnetics	Model Name	Sample Date	Declination (°)	Dip Angle (°)	Field Strength (nT)
	HDGM	03/04/2021	7.80	66.85	52,063

Design		Calvary Farms 1_Final Surveys			
Audit Notes:					
Version:	1.0	Phase:	ACTUAL	Tie On Depth:	0.0
Vertical Section:	Depth From (TVD) (ft)	+N/-S (ft)	+E/-W (ft)	Direction (°)	
	0.0	0.0	0.0	90.67	

Survey Program	Date	03/16/2021			
From (ft)	To (ft)	Survey (Wellbore)	Tool Name	Description	
206.0	17,290.0	Calvary Farms 1_Final Surveys (Wellbore)	MWD	MWD - Standard	

Survey									
Measured Depth (ft)	Inclination (°)	Azimuth (°)	Vertical Depth (ft)	+N/-S (ft)	+E/-W (ft)	Vertical Section (ft)	Dogleg Rate (°/100usft)	Build Rate (°/100usft)	Turn Rate (°/100usft)
0.0	0.00	0.00	0.0	0.0	0.0	0.0	0.00	0.00	0.00
206.0	0.88	195.01	206.0	-1.5	-0.4	-0.4	0.43	0.43	0.00
296.0	0.70	359.54	296.0	-1.6	-0.6	-0.6	1.74	-0.20	182.81
385.0	1.06	2.70	385.0	-0.3	-0.6	-0.6	0.41	0.40	3.55
474.0	1.32	356.55	474.0	1.6	-0.6	-0.6	0.33	0.29	-6.91
563.0	0.88	314.54	562.9	3.1	-1.1	-1.2	1.00	-0.49	-47.20
653.0	1.23	293.44	652.9	3.9	-2.5	-2.6	0.57	0.39	-23.44
743.0	1.49	288.87	742.9	4.7	-4.5	-4.6	0.31	0.29	-5.08
832.0	0.70	282.90	831.9	5.2	-6.1	-6.2	0.90	-0.89	-6.71
922.0	0.62	302.06	921.9	5.6	-7.1	-7.1	0.26	-0.09	21.29

Company:	Bayswater Exploration & Production, LLC	Local Co-ordinate Reference:	Well Calvary Farms 1
Project:	SEC.19-T7N-R65W	TVD Reference:	RKB @ 4901.0ft (Original Well Elev)
Site:	Calvary Farms Pad SEC.19-7N-65W	MD Reference:	RKB @ 4901.0ft (Original Well Elev)
Well:	Calvary Farms 1	North Reference:	True
Wellbore:	Wellbore #1 Calvary Farms 1	Survey Calculation Method:	Minimum Curvature
Design:	Calvary Farms 1_Final Surveys	Database:	US_EDM

Survey

Measured Depth (ft)	Inclination (°)	Azimuth (°)	Vertical Depth (ft)	+N/-S (ft)	+E/-W (ft)	Vertical Section (ft)	Dogleg Rate (°/100usft)	Build Rate (°/100usft)	Turn Rate (°/100usft)
1,011.0	0.79	303.82	1,010.9	6.2	-8.0	-8.1	0.19	0.19	1.98
1,101.0	0.62	139.28	1,100.9	6.2	-8.2	-8.3	1.55	-0.19	-182.82
1,190.0	1.06	137.70	1,189.9	5.2	-7.3	-7.4	0.50	0.49	-1.78
1,279.0	1.14	129.97	1,278.8	4.0	-6.1	-6.1	0.19	0.09	-8.69
1,369.0	1.23	137.70	1,368.8	2.7	-4.8	-4.8	0.20	0.10	8.59
1,458.0	1.06	146.67	1,457.8	1.3	-3.7	-3.7	0.28	-0.19	10.08
1,517.0	1.23	146.49	1,516.8	0.3	-3.0	-3.0	0.29	0.29	-0.31
1,685.0	1.74	136.23	1,684.7	-3.0	-0.3	-0.2	0.34	0.30	-6.11
1,774.0	1.81	105.37	1,773.7	-4.4	2.0	2.1	1.06	0.08	-34.67
1,863.0	1.61	106.50	1,862.7	-5.1	4.6	4.7	0.23	-0.22	1.27
1,952.0	1.56	63.43	1,951.6	-4.9	6.9	6.9	1.31	-0.06	-48.39
2,042.0	1.78	57.05	2,041.6	-3.6	9.1	9.2	0.32	0.24	-7.09
2,221.0	1.73	55.48	2,220.5	-0.6	13.7	13.7	0.04	-0.03	-0.88
2,311.0	1.89	47.88	2,310.5	1.2	15.9	15.9	0.32	0.18	-8.44
2,400.0	1.71	50.16	2,399.4	3.0	18.0	18.0	0.22	-0.20	2.56
2,490.0	1.46	46.70	2,489.4	4.7	19.9	19.8	0.30	-0.28	-3.84
2,579.0	1.71	35.15	2,578.3	6.6	21.5	21.4	0.45	0.28	-12.98
2,668.0	1.74	32.06	2,667.3	8.8	23.0	22.9	0.11	0.03	-3.47
2,758.0	1.08	330.03	2,757.3	10.7	23.3	23.1	1.73	-0.73	-68.92
2,846.0	0.95	302.26	2,845.3	11.8	22.2	22.1	0.57	-0.15	-31.56
2,935.0	1.13	299.46	2,934.3	12.6	20.9	20.7	0.21	0.20	-3.15
3,046.0	1.08	302.63	3,045.2	13.7	19.0	18.9	0.07	-0.05	2.86
3,136.0	1.13	300.69	3,135.2	14.6	17.5	17.4	0.07	0.06	-2.16
3,225.0	1.27	289.14	3,224.2	15.4	15.9	15.7	0.31	0.16	-12.98
3,315.0	1.40	292.59	3,314.2	16.1	13.9	13.7	0.17	0.14	3.83
3,404.0	1.55	290.00	3,403.1	17.0	11.8	11.6	0.18	0.17	-2.91
3,493.0	1.63	283.95	3,492.1	17.7	9.4	9.2	0.21	0.09	-6.80
3,582.0	1.80	292.29	3,581.1	18.5	6.9	6.7	0.34	0.19	9.37
3,671.0	1.00	234.00	3,670.0	18.6	5.0	4.7	1.72	-0.90	-65.49
3,761.0	1.40	196.76	3,760.0	17.1	4.0	3.8	0.95	0.44	-41.38
3,850.0	1.52	196.59	3,849.0	14.9	3.4	3.2	0.13	0.13	-0.19
3,939.0	1.40	197.80	3,938.0	12.8	2.7	2.5	0.14	-0.13	1.36
4,029.0	1.25	199.04	4,027.9	10.8	2.0	1.9	0.17	-0.17	1.38
4,119.0	1.23	198.76	4,117.9	8.9	1.4	1.3	0.02	-0.02	-0.31
4,209.0	1.28	192.16	4,207.9	7.0	0.9	0.8	0.17	0.06	-7.33
4,299.0	1.39	187.51	4,297.9	5.0	0.5	0.5	0.17	0.12	-5.17
4,388.0	1.35	194.12	4,386.9	2.9	0.1	0.1	0.18	-0.04	7.43
4,477.0	1.09	186.46	4,475.8	1.0	-0.2	-0.2	0.34	-0.29	-8.61
4,567.0	1.16	182.89	4,565.8	-0.7	-0.4	-0.4	0.11	0.08	-3.97
4,657.0	1.18	195.73	4,655.8	-2.5	-0.7	-0.6	0.29	0.02	14.27
4,747.0	1.20	201.34	4,745.8	-4.3	-1.3	-1.2	0.13	0.02	6.23
4,836.0	1.26	189.86	4,834.8	-6.1	-1.8	-1.7	0.28	0.07	-12.90
4,926.0	1.16	200.30	4,924.7	-8.0	-2.3	-2.2	0.27	-0.11	11.60
5,015.0	0.92	185.74	5,013.7	-9.5	-2.6	-2.5	0.40	-0.27	-16.36

Company:	Bayswater Exploration & Production, LLC	Local Co-ordinate Reference:	Well Calvary Farms 1
Project:	SEC.19-T7N-R65W	TVD Reference:	RKB @ 4901.0ft (Original Well Elev)
Site:	Calvary Farms Pad SEC.19-7N-65W	MD Reference:	RKB @ 4901.0ft (Original Well Elev)
Well:	Calvary Farms 1	North Reference:	True
Wellbore:	Wellbore #1 Calvary Farms 1	Survey Calculation Method:	Minimum Curvature
Design:	Calvary Farms 1_Final Surveys	Database:	US_EDM

Survey

Measured Depth (ft)	Inclination (°)	Azimuth (°)	Vertical Depth (ft)	+N/-S (ft)	+E/-W (ft)	Vertical Section (ft)	Dogleg Rate (°/100usft)	Build Rate (°/100usft)	Turn Rate (°/100usft)
5,105.0	1.22	107.96	5,103.7	-10.5	-1.8	-1.7	1.52	0.33	-86.42
5,194.0	2.14	127.50	5,192.7	-11.8	0.4	0.6	1.20	1.03	21.96
5,283.0	3.85	121.29	5,281.6	-14.4	4.3	4.5	1.95	1.92	-6.98
5,373.0	5.85	127.04	5,371.2	-18.7	10.5	10.8	2.28	2.22	6.39
5,462.0	7.55	130.15	5,459.6	-25.2	18.6	18.9	1.95	1.91	3.49
5,552.0	6.61	131.00	5,548.9	-32.5	27.1	27.4	1.05	-1.04	0.94
5,641.0	7.61	125.98	5,637.2	-39.3	35.7	36.2	1.32	1.12	-5.64
5,731.0	9.48	128.14	5,726.2	-47.4	46.3	46.9	2.11	2.08	2.40
5,820.0	8.86	127.38	5,814.1	-56.0	57.6	58.2	0.71	-0.70	-0.85
5,910.0	7.72	114.99	5,903.2	-62.8	68.5	69.3	2.35	-1.27	-13.77
5,999.0	7.55	110.85	5,991.4	-67.4	79.4	80.2	0.65	-0.19	-4.65
6,089.0	8.36	116.74	6,080.5	-72.5	90.8	91.6	1.28	0.90	6.54
6,179.0	8.96	119.87	6,169.5	-78.9	102.7	103.6	0.85	0.67	3.48
6,268.0	9.81	121.23	6,257.3	-86.3	115.2	116.2	0.99	0.96	1.53
6,358.0	8.64	117.71	6,346.1	-93.4	127.8	128.8	1.44	-1.30	-3.91
6,447.0	7.56	116.43	6,434.2	-99.1	138.9	140.1	1.23	-1.21	-1.44
6,537.0	8.13	124.23	6,523.4	-105.3	149.5	150.7	1.34	0.63	8.67
6,627.0	8.96	128.97	6,612.4	-113.3	160.2	161.5	1.21	0.92	5.27
6,717.0	11.38	107.71	6,701.0	-120.4	174.1	175.5	4.92	2.69	-23.62
6,806.0	16.68	101.08	6,787.3	-125.6	195.0	196.5	6.21	5.96	-7.45
6,895.0	18.84	97.62	6,872.1	-129.9	221.8	223.3	2.70	2.43	-3.89
6,984.0	24.95	94.35	6,954.6	-133.2	254.8	256.3	7.00	6.87	-3.67
7,073.0	36.02	98.75	7,031.2	-138.7	299.5	301.1	12.68	12.44	4.94
7,164.0	45.72	92.56	7,100.0	-144.2	358.7	360.3	11.54	10.66	-6.80
7,253.0	51.79	87.85	7,158.6	-144.3	425.5	427.2	7.89	6.82	-5.29
7,342.0	57.58	83.71	7,210.1	-138.9	497.9	499.5	7.53	6.51	-4.65
7,432.0	64.38	84.30	7,253.7	-130.7	576.1	577.6	7.58	7.56	0.66
7,520.0	70.10	86.79	7,287.8	-124.4	657.0	658.4	7.00	6.50	2.83
7,610.0	77.01	86.52	7,313.2	-119.4	743.1	744.4	7.68	7.68	-0.30
7,698.0	89.38	86.01	7,323.6	-113.7	830.1	831.4	14.07	14.06	-0.58
7,750.8	88.89	84.65	7,324.4	-109.4	882.7	884.0	2.74	-0.93	-2.58
TPZ (1329.8' FNL, 470' FWL Sec 20)									
7,788.0	88.54	83.69	7,325.3	-105.6	919.7	920.9	2.74	-0.93	-2.58
7,877.0	89.50	83.00	7,326.8	-95.3	1,008.1	1,009.2	1.33	1.08	-0.78
7,967.0	91.36	85.03	7,326.1	-85.9	1,097.6	1,098.6	3.06	2.07	2.26
8,056.0	87.83	84.04	7,326.7	-77.5	1,186.2	1,187.0	4.12	-3.97	-1.11
8,146.0	88.68	85.37	7,329.5	-69.2	1,275.8	1,276.5	1.75	0.94	1.48
8,235.0	85.67	84.45	7,333.9	-61.3	1,364.3	1,364.9	3.54	-3.38	-1.03
8,324.0	88.36	85.83	7,338.5	-53.7	1,452.8	1,453.4	3.40	3.02	1.55
8,414.0	90.04	87.54	7,339.8	-48.5	1,542.7	1,543.1	2.66	1.87	1.90
8,504.0	91.19	89.20	7,338.8	-46.0	1,632.6	1,633.1	2.24	1.28	1.84
8,594.0	93.85	89.45	7,334.8	-44.9	1,722.5	1,722.9	2.97	2.96	0.28
8,682.0	92.14	90.18	7,330.2	-44.6	1,810.4	1,810.8	2.11	-1.94	0.83

Company:	Bayswater Exploration & Production, LLC	Local Co-ordinate Reference:	Well Calvary Farms 1
Project:	SEC.19-T7N-R65W	TVD Reference:	RKB @ 4901.0ft (Original Well Elev)
Site:	Calvary Farms Pad SEC.19-7N-65W	MD Reference:	RKB @ 4901.0ft (Original Well Elev)
Well:	Calvary Farms 1	North Reference:	True
Wellbore:	Wellbore #1 Calvary Farms 1	Survey Calculation Method:	Minimum Curvature
Design:	Calvary Farms 1_Final Surveys	Database:	US_EDM

Survey

Measured Depth (ft)	Inclination (°)	Azimuth (°)	Vertical Depth (ft)	+N/-S (ft)	+E/-W (ft)	Vertical Section (ft)	Dogleg Rate (°/100usft)	Build Rate (°/100usft)	Turn Rate (°/100usft)
8,772.0	90.99	90.79	7,327.8	-45.4	1,900.4	1,900.8	1.45	-1.28	0.68
8,861.0	90.72	91.38	7,326.4	-47.1	1,989.3	1,989.8	0.73	-0.30	0.66
8,951.0	90.90	91.34	7,325.2	-49.2	2,079.3	2,079.7	0.20	0.20	-0.04
9,040.0	88.87	90.92	7,325.4	-51.0	2,168.3	2,168.7	2.33	-2.28	-0.47
9,130.0	90.94	91.29	7,325.5	-52.7	2,258.3	2,258.7	2.34	2.30	0.41
9,219.0	89.66	90.77	7,325.0	-54.3	2,347.2	2,347.7	1.55	-1.44	-0.58
9,307.0	89.32	90.27	7,325.8	-55.1	2,435.2	2,435.7	0.69	-0.39	-0.57
9,398.0	90.49	90.27	7,326.0	-55.5	2,526.2	2,526.7	1.29	1.29	0.00
9,487.0	91.17	90.22	7,324.7	-55.9	2,615.2	2,615.7	0.77	0.76	-0.06
9,576.0	88.40	89.81	7,325.0	-55.9	2,704.2	2,704.7	3.15	-3.11	-0.46
9,666.0	89.59	90.73	7,326.6	-56.4	2,794.2	2,794.7	1.67	1.32	1.02
9,755.0	89.66	91.16	7,327.2	-57.8	2,883.2	2,883.7	0.49	0.08	0.48
9,844.0	90.24	91.21	7,327.3	-59.7	2,972.2	2,972.7	0.65	0.65	0.06
9,934.0	89.94	93.12	7,327.1	-63.1	3,062.1	3,062.6	2.15	-0.33	2.12
10,023.0	90.36	93.49	7,326.9	-68.2	3,150.9	3,151.5	0.63	0.47	0.42
10,112.0	89.47	93.07	7,327.0	-73.3	3,239.8	3,240.4	1.11	-1.00	-0.47
10,201.0	89.07	92.41	7,328.1	-77.5	3,328.7	3,329.4	0.87	-0.45	-0.74
10,290.0	89.32	91.86	7,329.4	-80.9	3,417.6	3,418.3	0.68	0.28	-0.62
10,379.0	88.75	90.36	7,330.9	-82.6	3,506.6	3,507.3	1.80	-0.64	-1.69
10,469.0	88.85	89.49	7,332.8	-82.5	3,596.6	3,597.3	0.97	0.11	-0.97
10,559.0	91.13	89.25	7,332.8	-81.5	3,686.6	3,687.3	2.55	2.53	-0.27
10,648.0	91.70	90.10	7,330.6	-81.0	3,775.5	3,776.2	1.15	0.64	0.96
10,738.0	90.68	89.63	7,328.7	-80.8	3,865.5	3,866.2	1.25	-1.13	-0.52
10,827.0	90.83	88.70	7,327.6	-79.5	3,954.5	3,955.1	1.06	0.17	-1.04
10,917.0	89.94	89.83	7,327.0	-78.3	4,044.5	4,045.1	1.60	-0.99	1.26
11,006.0	90.98	90.51	7,326.2	-78.6	4,133.5	4,134.1	1.40	1.17	0.76
11,096.0	89.71	90.07	7,325.7	-79.0	4,223.5	4,224.1	1.49	-1.41	-0.49
11,185.0	90.22	90.14	7,325.8	-79.2	4,312.5	4,313.1	0.58	0.57	0.08
11,275.0	91.79	90.87	7,324.2	-80.0	4,402.4	4,403.1	1.92	1.74	0.81
11,365.0	89.97	91.34	7,322.8	-81.7	4,492.4	4,493.1	2.09	-2.02	0.52
11,455.0	89.15	92.23	7,323.5	-84.5	4,582.4	4,583.0	1.34	-0.91	0.99
11,544.0	90.55	91.96	7,323.7	-87.8	4,671.3	4,672.0	1.60	1.57	-0.30
11,633.0	88.96	92.05	7,324.1	-90.9	4,760.2	4,761.0	1.79	-1.79	0.10
11,723.0	88.75	91.12	7,325.9	-93.4	4,850.2	4,851.0	1.06	-0.23	-1.03
11,813.0	87.23	89.41	7,329.1	-93.8	4,940.1	4,940.9	2.54	-1.69	-1.90
11,902.0	88.33	88.99	7,332.5	-92.6	5,029.1	5,029.8	1.32	1.24	-0.47
11,992.0	89.24	88.88	7,334.4	-90.9	5,119.0	5,119.7	1.02	1.01	-0.12
12,082.0	91.00	88.83	7,334.2	-89.1	5,209.0	5,209.7	1.96	1.96	-0.06
12,172.0	91.86	88.55	7,332.0	-87.0	5,298.9	5,299.6	1.00	0.96	-0.31
12,261.0	92.66	90.27	7,328.5	-86.1	5,387.9	5,388.5	2.13	0.90	1.93
12,351.0	91.32	91.66	7,325.3	-87.6	5,477.8	5,478.4	2.14	-1.49	1.54
12,440.0	91.46	92.08	7,323.2	-90.5	5,566.7	5,567.4	0.50	0.16	0.47
12,528.0	91.03	90.37	7,321.3	-92.4	5,654.7	5,655.4	2.00	-0.49	-1.94
12,617.0	91.67	89.63	7,319.2	-92.4	5,743.6	5,744.3	1.10	0.72	-0.83

Company:	Bayswater Exploration & Production, LLC	Local Co-ordinate Reference:	Well Calvary Farms 1
Project:	SEC.19-T7N-R65W	TVD Reference:	RKB @ 4901.0ft (Original Well Elev)
Site:	Calvary Farms Pad SEC.19-7N-65W	MD Reference:	RKB @ 4901.0ft (Original Well Elev)
Well:	Calvary Farms 1	North Reference:	True
Wellbore:	Wellbore #1 Calvary Farms 1	Survey Calculation Method:	Minimum Curvature
Design:	Calvary Farms 1_Final Surveys	Database:	US_EDM

Survey

Measured Depth (ft)	Inclination (°)	Azimuth (°)	Vertical Depth (ft)	+N/-S (ft)	+E/-W (ft)	Vertical Section (ft)	Dogleg Rate (°/100usft)	Build Rate (°/100usft)	Turn Rate (°/100usft)
12,706.0	91.37	89.82	7,316.8	-92.0	5,832.6	5,833.3	0.40	-0.34	0.21
12,795.0	90.29	90.85	7,315.5	-92.5	5,921.6	5,922.3	1.68	-1.21	1.16
12,884.0	88.85	90.90	7,316.2	-93.9	6,010.6	6,011.3	1.62	-1.62	0.06
12,973.0	88.83	90.72	7,318.0	-95.1	6,099.6	6,100.3	0.20	-0.02	-0.20
13,062.0	89.80	90.73	7,319.1	-96.2	6,188.5	6,189.2	1.09	1.09	0.01
13,151.0	91.06	89.96	7,318.4	-96.8	6,277.5	6,278.2	1.66	1.42	-0.87
13,240.0	92.39	89.79	7,315.7	-96.6	6,366.5	6,367.2	1.51	1.49	-0.19
13,330.0	91.20	90.05	7,312.9	-96.5	6,456.4	6,457.1	1.35	-1.32	0.29
13,419.0	91.17	90.02	7,311.0	-96.5	6,545.4	6,546.1	0.05	-0.03	-0.03
13,508.0	90.62	90.95	7,309.7	-97.3	6,634.4	6,635.1	1.21	-0.62	1.04
13,598.0	90.46	91.22	7,308.8	-99.0	6,724.4	6,725.1	0.35	-0.18	0.30
13,688.0	89.96	90.62	7,308.5	-100.4	6,814.4	6,815.1	0.87	-0.56	-0.67
13,777.0	90.07	90.27	7,308.5	-101.1	6,903.4	6,904.1	0.41	0.12	-0.39
13,867.0	90.68	89.98	7,307.9	-101.3	6,993.4	6,994.1	0.75	0.68	-0.32
13,956.0	91.32	90.23	7,306.3	-101.5	7,082.4	7,083.1	0.77	0.72	0.28
14,046.0	90.46	90.85	7,304.9	-102.3	7,172.3	7,173.1	1.18	-0.96	0.69
14,135.0	90.06	90.47	7,304.5	-103.3	7,261.3	7,262.1	0.62	-0.45	-0.43
14,225.0	89.00	90.13	7,305.2	-103.8	7,351.3	7,352.0	1.24	-1.18	-0.38
14,314.0	89.15	89.86	7,306.7	-103.8	7,440.3	7,441.0	0.35	0.17	-0.30
14,404.0	89.92	89.27	7,307.4	-103.1	7,530.3	7,531.0	1.08	0.86	-0.66
14,493.0	90.81	88.90	7,306.8	-101.7	7,619.3	7,620.0	1.08	1.00	-0.42
14,583.0	90.33	89.73	7,306.0	-100.6	7,709.3	7,709.9	1.07	-0.53	0.92
14,673.0	91.11	88.40	7,304.8	-99.2	7,799.3	7,799.9	1.71	0.87	-1.48
14,762.0	90.43	89.99	7,303.6	-97.9	7,888.2	7,888.9	1.94	-0.76	1.79
14,851.0	88.20	89.01	7,304.7	-97.1	7,977.2	7,977.8	2.74	-2.51	-1.10
14,941.0	88.87	88.95	7,307.0	-95.5	8,067.2	8,067.8	0.75	0.74	-0.07
15,030.0	89.48	90.81	7,308.3	-95.3	8,156.2	8,156.7	2.20	0.69	2.09
15,121.0	90.09	91.17	7,308.6	-96.9	8,247.2	8,247.7	0.78	0.67	0.40
15,210.0	86.54	89.44	7,311.2	-97.4	8,336.1	8,336.7	4.44	-3.99	-1.94
15,300.0	89.73	90.91	7,314.2	-97.7	8,426.0	8,426.6	3.90	3.54	1.63
15,389.0	90.36	92.04	7,314.1	-100.0	8,515.0	8,515.6	1.45	0.71	1.27
15,479.0	91.35	92.09	7,312.7	-103.2	8,604.9	8,605.6	1.10	1.10	0.06
15,569.0	92.09	91.02	7,310.0	-105.6	8,694.9	8,695.5	1.45	0.82	-1.19
15,659.0	92.48	91.56	7,306.5	-107.7	8,784.8	8,785.4	0.74	0.43	0.60
15,749.0	92.43	91.84	7,302.6	-110.3	8,874.6	8,875.3	0.32	-0.06	0.31
15,838.0	89.90	90.92	7,300.8	-112.5	8,963.6	8,964.3	3.02	-2.84	-1.03
15,928.0	90.57	90.46	7,300.4	-113.6	9,053.6	9,054.3	0.90	0.74	-0.51
16,018.0	88.24	89.66	7,301.4	-113.7	9,143.6	9,144.3	2.74	-2.59	-0.89
16,106.0	88.20	90.89	7,304.1	-114.1	9,231.5	9,232.2	1.40	-0.05	1.40
16,196.0	90.19	90.23	7,305.4	-115.0	9,321.5	9,322.2	2.33	2.21	-0.73
16,285.0	92.76	90.78	7,303.1	-115.7	9,410.5	9,411.2	2.95	2.89	0.62
16,375.0	90.32	90.80	7,300.6	-117.0	9,500.4	9,501.1	2.71	-2.71	0.02
16,464.0	90.22	89.65	7,300.2	-117.3	9,589.4	9,590.1	1.30	-0.11	-1.29

Company:	Bayswater Exploration & Production, LLC	Local Co-ordinate Reference:	Well Calvary Farms 1
Project:	SEC.19-T7N-R65W	TVD Reference:	RKB @ 4901.0ft (Original Well Elev)
Site:	Calvary Farms Pad SEC.19-7N-65W	MD Reference:	RKB @ 4901.0ft (Original Well Elev)
Well:	Calvary Farms 1	North Reference:	True
Wellbore:	Wellbore #1 Calvary Farms 1	Survey Calculation Method:	Minimum Curvature
Design:	Calvary Farms 1_Final Surveys	Database:	US_EDM

Survey

Measured Depth (ft)	Inclination (°)	Azimuth (°)	Vertical Depth (ft)	+N/-S (ft)	+E/-W (ft)	Vertical Section (ft)	Dogleg Rate (°/100usft)	Build Rate (°/100usft)	Turn Rate (°/100usft)
16,554.0	91.00	89.11	7,299.3	-116.4	9,679.4	9,680.1	1.05	0.87	-0.60
16,643.0	89.91	88.57	7,298.6	-114.6	9,768.4	9,769.1	1.37	-1.22	-0.61
16,732.0	89.62	88.94	7,298.9	-112.6	9,857.4	9,858.0	0.53	-0.33	0.42
16,822.0	90.93	90.43	7,298.5	-112.1	9,947.4	9,948.0	2.20	1.46	1.66
16,912.0	90.93	90.32	7,297.0	-112.7	10,037.3	10,038.0	0.12	0.00	-0.12
17,002.0	94.70	91.25	7,292.6	-113.9	10,127.2	10,127.8	4.31	4.19	1.03
17,092.0	92.72	93.60	7,286.8	-117.7	10,216.9	10,217.6	3.41	-2.20	2.61
17,182.0	91.59	92.65	7,283.4	-122.7	10,306.7	10,307.5	1.64	-1.26	-1.06
17,220.0	91.85	92.69	7,282.3	-124.4	10,344.7	10,345.4	0.69	0.68	0.11
17,290.0	91.85	92.69	7,280.0	-127.7	10,414.6	10,415.3	0.00	0.00	0.00
BHL (1439.3' FNL, 468' FEL Sec 21)									

Design Targets

Target Name	Dip Angle (°)	Dip Dir. (°)	TVD (ft)	+N/-S (ft)	+E/-W (ft)	Northing (usft)	Easting (usft)	Latitude	Longitude
- hit/miss target									
- Shape									
SHL 1248'FNL & 413'	0.00	0.00	0.0	0.0	0.0	1,449,458.09	3,222,815.05	40.564396	-104.698020
- actual wellpath hits target center									
- Point									

Design Annotations

Measured Depth (ft)	Vertical Depth (ft)	Local Coordinates		Comment
		+N/-S (ft)	+E/-W (ft)	
7,750.8	7,324.4	-109.4	882.7	TPZ (1329.8' FNL, 470' FWL Sec 20)
17,290.0	7,280.0	-127.7	10,414.6	BHL (1439.3' FNL, 468' FEL Sec 21)

Checked By: _____ Approved By: _____ Date: _____