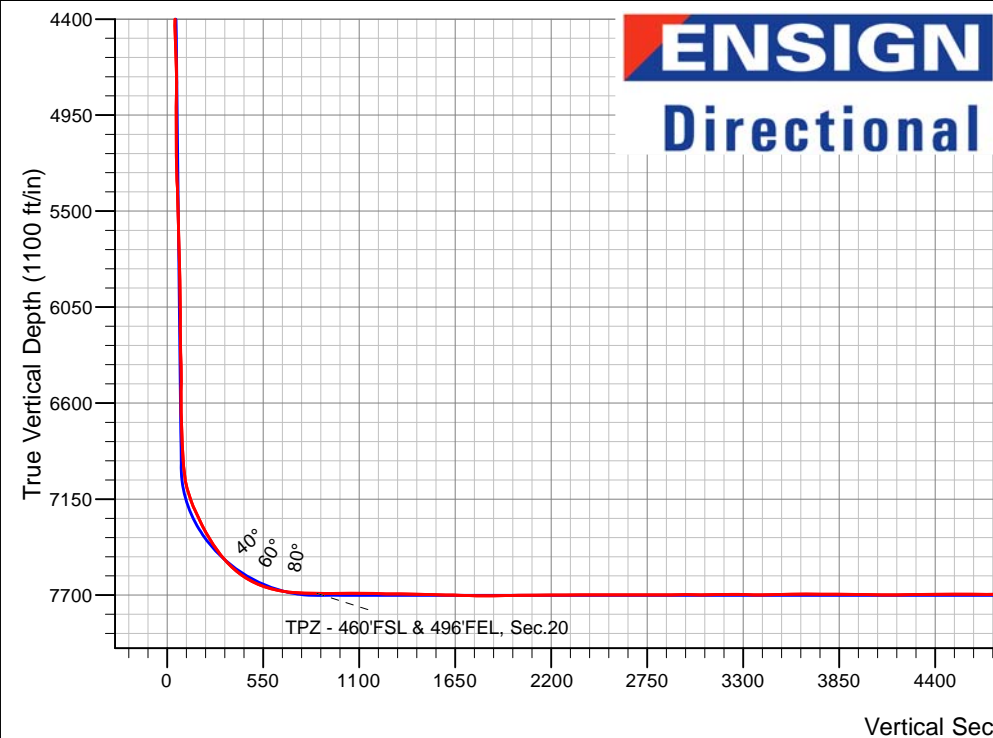
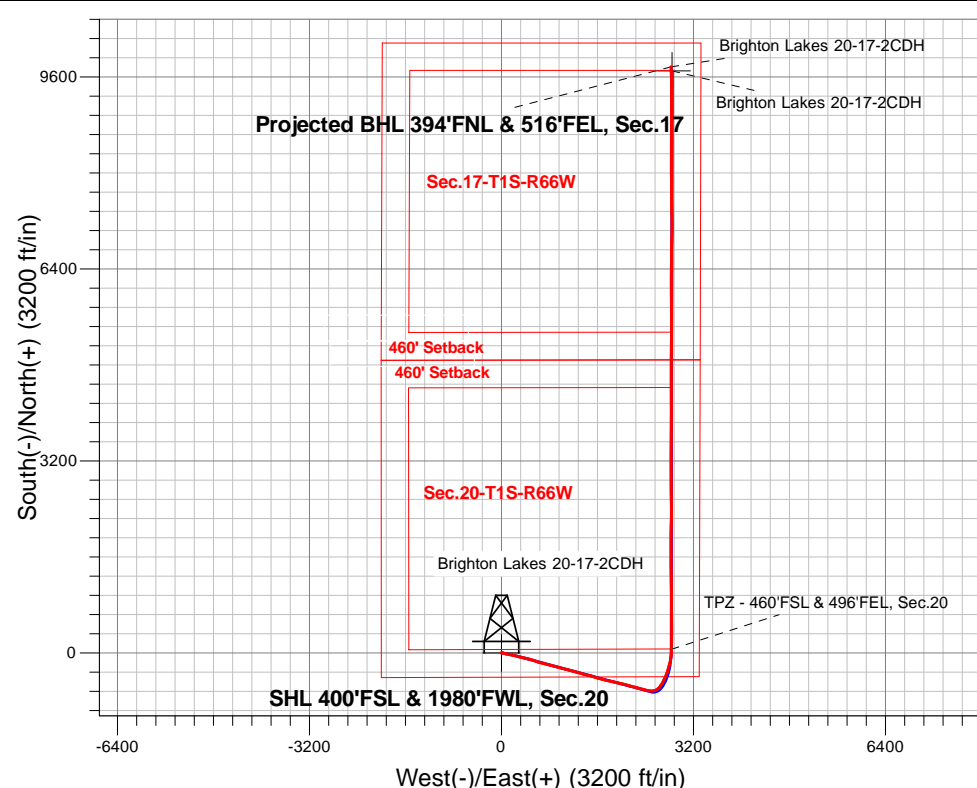


# POCO Operating

Well Name: **Brighton Lakes 20-17-2CDH**  
 Surface Location: Brighton Lakes Pad Sec.20-T1S-R66W  
 North American Datum 1983 , US State Plane 1983, Colorado Northern Zone  
 Ground Elevation: 5047.0  
 +N/-S +E/-W Northing Easting Latitude Longitude Slot  
 0.0 0.0 1223371.28 3195769.04 39.944420 -104.801770  
 Ensign 140 RKB - 23.5' WELL @ 5070.5ft (Ensign 140 RKB - 23.5')

## FINAL SURVEY

**Projected Bottom Hole Location**  
**18,430'MD 7703'TVD 9771'N & 2825'E of SHL**  
**89.96 degree Incl @ 357.65 degree AZM**



**ENSIGN**  
**Directional**

Brighton Lakes Pad Sec.20-T1S-R66W  
 Brighton Lakes 20-17-2CDH  
 Brighton Lakes 20-17-2CDH Wellbore #1  
 15:58, December 15 2020

### ANNOTATIONS

TVD	MD	Annotation
7689.6	8719.5	TPZ - 460'FSL & 496'FEL, Sec.20

### LEGEND

- ▲ Brighton Lakes 20-17-2CDH, Brighton Lakes 20-17-2CDH Wellbore #1, Plan #1 (11-4-20) V0
- Brighton Lakes 20-17-2CDH Wellbore #1 Survey #1

**Projected BHL 394'FNL & 516'FEL, Sec.17**

Brighton Lakes 20-17-2CDH

Brighton Lakes 20-17-2CDH

Vertical Section at 16.32° (1100 ft/in)



## **POCO Operating**

**Sec.20-T1S-R66W**

**Brighton Lakes Pad Sec.20-T1S-R66W**

**Brighton Lakes 20-17-2CDH**

**Brighton Lakes 20-17-2CDH Wellbore #1**

**Survey: Survey #1**

## **Standard Survey Report**

**15 December, 2020**

<b>Company:</b>	POCO Operating	<b>Local Co-ordinate Reference:</b>	Well Brighton Lakes 20-17-2CDH
<b>Project:</b>	Sec.20-T1S-R66W	<b>TVD Reference:</b>	WELL @ 5070.5ft (Ensign 140 RKB - 23.5')
<b>Site:</b>	Brighton Lakes Pad Sec.20-T1S-R66W	<b>MD Reference:</b>	WELL @ 5070.5ft (Ensign 140 RKB - 23.5')
<b>Well:</b>	Brighton Lakes 20-17-2CDH	<b>North Reference:</b>	True
<b>Wellbore:</b>	Brighton Lakes 20-17-2CDH Wellbore #1	<b>Survey Calculation Method:</b>	Minimum Curvature
<b>Design:</b>	Brighton Lakes 20-17-2CDH Wellbore #1	<b>Database:</b>	US_EDM

<b>Project</b>	Sec.20-T1S-R66W, Adams County, CO		
<b>Map System:</b>	US State Plane 1983	<b>System Datum:</b>	Mean Sea Level
<b>Geo Datum:</b>	North American Datum 1983		
<b>Map Zone:</b>	Colorado Northern Zone		Using geodetic scale factor

Site		Brighton Lakes Pad Sec.20-T1S-R66W			
Site Position:		Northing:	1,223,370.47 usft	Latitude:	39.944420
From:	Lat/Long	Easting:	3,195,665.30 usft	Longitude:	-104.802140
Position Uncertainty:	0.0 ft	Slot Radius:	13-3/16 "	Grid Convergence:	0.45 °

Well	Brighton Lakes 20-17-2CDH					
Well Position	+N/-S	0.0 ft	Northing:	1,223,371.28 usft	Latitude:	39.944420
	+E/-W	0.0 ft	Easting:	3,195,769.04 usft	Longitude:	-104.801770
Position Uncertainty		0.0 ft	Wellhead Elevation:	0.0 ft	Ground Level:	5,047.0 ft

Wellbore Brighton Lakes 20-17-2CDH Wellbore #1					
Magnetics	Model Name	Sample Date	Declination	Dip Angle	Field Strength
			(°)	(°)	(nT)
	HDGM	11/04/2020	8.02	66.17	51,707

Design	Brighton Lakes 20-17-2CDH Wellbore #1				
Audit Notes:					
Version:	1.0	Phase:	ACTUAL	Tie On Depth:	0.0
Vertical Section:	Depth From (TVD) (ft)	+N/-S (ft)	+E/-W (ft)	Direction (°)	
	0.0	0.0	0.0	16.32	

Survey Program		Date	12/15/2020		
From (ft)	To (ft)	Survey (Wellbore)	Tool Name	Description	
134.8	18,430.0	Survey #1 (Brighton Lakes 20-17-2CDH W	MWD	MWD - Standard	

Survey	Survey Data									
	Measured Depth (ft)	Inclination (°)	Azimuth (°)	Vertical Depth (ft)	+N/-S (ft)	+E/-W (ft)	Vertical Section (ft)	Dogleg Rate (°/100usft)	Build Rate (°/100usft)	Turn Rate (°/100usft)
	0.0	0.00	0.00	0.0	0.0	0.0	0.0	0.00	0.00	0.00
	134.8	0.35	97.97	134.8	-0.1	0.4	0.1	0.26	0.26	0.00
	221.8	0.26	65.45	221.8	0.0	0.9	0.2	0.22	-0.10	-37.38
	308.8	0.75	62.20	308.8	0.3	1.5	0.8	0.56	0.56	-3.74
	396.8	0.75	53.23	396.8	0.9	2.5	1.6	0.13	0.00	-10.19
	483.8	0.44	56.40	483.8	1.5	3.2	2.3	0.36	-0.36	3.64
	570.8	0.31	264.00	570.8	1.6	3.3	2.5	0.84	-0.15	-175.17
	657.8	0.22	277.97	657.8	1.6	2.9	2.4	0.13	-0.10	16.06
	745.8	0.53	322.36	745.8	2.0	2.5	2.6	0.46	0.35	50.44
	832.8	0.66	325.61	832.8	2.7	1.9	3.1	0.15	0.15	3.74

<b>Company:</b>	POCO Operating	<b>Local Co-ordinate Reference:</b>	Well Brighton Lakes 20-17-2CDH
<b>Project:</b>	Sec.20-T1S-R66W	<b>TVD Reference:</b>	WELL @ 5070.5ft (Ensign 140 RKB - 23.5')
<b>Site:</b>	Brighton Lakes Pad Sec.20-T1S-R66W	<b>MD Reference:</b>	WELL @ 5070.5ft (Ensign 140 RKB - 23.5')
<b>Well:</b>	Brighton Lakes 20-17-2CDH	<b>North Reference:</b>	True
<b>Wellbore:</b>	Brighton Lakes 20-17-2CDH Wellbore #1	<b>Survey Calculation Method:</b>	Minimum Curvature
<b>Design:</b>	Brighton Lakes 20-17-2CDH Wellbore #1	<b>Database:</b>	US_EDM

Survey									
Measured Depth (ft)	Inclination (°)	Azimuth (°)	Vertical Depth (ft)	+N/-S (ft)	+E/-W (ft)	Vertical Section (ft)	Dogleg Rate (°/100usft)	Build Rate (°/100usft)	Turn Rate (°/100usft)
919.8	0.75	342.92	919.8	3.7	1.5	3.9	0.26	0.10	19.90
1,006.8	0.57	359.53	1,006.8	4.6	1.3	4.8	0.30	-0.21	19.09
1,093.8	2.11	110.19	1,093.7	4.5	2.8	5.1	2.73	1.77	127.20
1,181.8	5.76	103.68	1,181.5	2.9	8.6	5.2	4.17	4.15	-7.40
1,268.8	9.10	100.87	1,267.8	0.6	19.6	6.1	3.86	3.84	-3.23
1,355.8	13.10	103.51	1,353.1	-3.0	36.0	7.2	4.63	4.60	3.03
1,442.8	14.15	105.88	1,437.7	-8.2	55.8	7.8	1.37	1.21	2.72
1,530.8	15.80	102.50	1,522.7	-13.8	77.8	8.7	2.12	1.88	-3.84
1,617.8	18.54	101.57	1,605.8	-19.1	103.0	10.6	3.17	3.15	-1.07
1,704.8	21.58	100.78	1,687.5	-24.9	132.2	13.3	3.51	3.49	-0.91
1,791.8	24.13	102.28	1,767.7	-31.6	165.3	16.1	3.01	2.93	1.72
1,848.8	23.86	102.54	1,819.8	-36.6	188.0	17.7	0.51	-0.47	0.46
1,936.0	24.53	102.59	1,899.3	-44.4	222.9	20.0	0.77	0.77	0.06
2,025.0	25.59	104.52	1,979.9	-53.2	259.5	21.8	1.50	1.19	2.17
2,114.0	25.32	104.35	2,060.3	-62.8	296.5	23.1	0.31	-0.30	-0.19
2,204.0	24.97	103.12	2,141.8	-71.9	333.7	24.8	0.70	-0.39	-1.37
2,294.0	24.62	102.59	2,223.5	-80.3	370.5	27.1	0.46	-0.39	-0.59
2,384.0	23.74	101.54	2,305.6	-88.0	406.5	29.8	1.09	-0.98	-1.17
2,473.0	24.01	104.88	2,386.9	-96.2	441.6	31.8	1.55	0.30	3.75
2,563.0	24.01	107.16	2,469.2	-106.3	476.8	32.0	1.03	0.00	2.53
2,653.0	22.95	107.16	2,551.7	-116.9	511.0	31.4	1.18	-1.18	0.00
2,742.0	23.83	108.74	2,633.4	-127.8	544.6	30.4	1.21	0.99	1.78
2,832.0	25.50	108.04	2,715.2	-139.6	580.3	29.1	1.88	1.86	-0.78
2,921.0	26.20	107.16	2,795.3	-151.4	617.3	28.2	0.90	0.79	-0.99
3,033.0	25.68	105.75	2,896.0	-165.2	664.3	28.1	0.72	-0.46	-1.26
3,123.0	24.45	104.00	2,977.5	-175.0	701.1	29.1	1.60	-1.37	-1.94
3,213.0	23.57	100.83	3,059.7	-182.9	736.8	31.5	1.73	-0.98	-3.52
3,302.0	24.01	104.88	3,141.2	-190.9	771.8	33.7	1.90	0.49	4.55
3,391.0	25.68	105.93	3,221.9	-200.9	807.9	34.3	1.94	1.88	1.18
3,481.0	26.47	106.63	3,302.8	-212.0	845.8	34.3	0.94	0.88	0.78
3,571.0	25.06	105.93	3,383.8	-222.9	883.4	34.3	1.60	-1.57	-0.78
3,660.0	25.50	104.17	3,464.3	-232.8	920.1	35.2	0.98	0.49	-1.98
3,750.0	25.68	104.35	3,545.5	-242.4	957.8	36.6	0.22	0.20	0.20
3,840.0	25.59	105.05	3,626.6	-252.2	995.4	37.7	0.35	-0.10	0.78
3,929.0	25.76	104.35	3,706.8	-262.0	1,032.7	38.8	0.39	0.19	-0.79
4,019.0	26.03	102.94	3,787.8	-271.3	1,070.9	40.6	0.75	0.30	-1.57
4,109.0	24.45	102.41	3,869.2	-279.7	1,108.4	43.1	1.77	-1.76	-0.59
4,199.0	24.18	102.77	3,951.2	-287.8	1,144.5	45.5	0.34	-0.30	0.40
4,289.0	24.97	105.23	4,033.1	-296.9	1,180.8	47.0	1.44	0.88	2.73
4,379.0	24.71	106.63	4,114.7	-307.2	1,217.2	47.2	0.71	-0.29	1.56
4,468.0	25.50	107.86	4,195.3	-318.4	1,253.2	46.6	1.06	0.89	1.38
4,557.0	24.62	108.04	4,276.0	-330.1	1,289.1	45.5	0.99	-0.99	0.20
4,647.0	25.15	108.22	4,357.6	-341.8	1,325.1	44.4	0.59	0.59	0.20
4,736.0	25.32	105.05	4,438.1	-352.7	1,361.4	44.1	1.53	0.19	-3.56

<b>Company:</b>	POCO Operating	<b>Local Co-ordinate Reference:</b>	Well Brighton Lakes 20-17-2CDH
<b>Project:</b>	Sec.20-T1S-R66W	<b>TVD Reference:</b>	WELL @ 5070.5ft (Ensign 140 RKB - 23.5')
<b>Site:</b>	Brighton Lakes Pad Sec.20-T1S-R66W	<b>MD Reference:</b>	WELL @ 5070.5ft (Ensign 140 RKB - 23.5')
<b>Well:</b>	Brighton Lakes 20-17-2CDH	<b>North Reference:</b>	True
<b>Wellbore:</b>	Brighton Lakes 20-17-2CDH Wellbore #1	<b>Survey Calculation Method:</b>	Minimum Curvature
<b>Design:</b>	Brighton Lakes 20-17-2CDH Wellbore #1	<b>Database:</b>	US_EDM

Survey									
Measured Depth (ft)	Inclination (°)	Azimuth (°)	Vertical Depth (ft)	+N/-S (ft)	+E/-W (ft)	Vertical Section (ft)	Dogleg Rate (°/100usft)	Build Rate (°/100usft)	Turn Rate (°/100usft)
4,825.0	25.32	102.77	4,518.6	-361.8	1,398.4	45.8	1.10	0.00	-2.56
4,915.0	25.06	100.66	4,600.0	-369.6	1,435.9	48.8	1.04	-0.29	-2.34
5,004.0	24.62	102.41	4,680.8	-377.1	1,472.5	51.9	0.96	-0.49	1.97
5,094.0	23.65	106.63	4,762.9	-386.3	1,508.1	53.1	2.20	-1.08	4.69
5,183.0	24.27	108.74	4,844.2	-397.3	1,542.6	52.3	1.19	0.70	2.37
5,272.0	25.50	107.34	4,925.0	-408.9	1,578.2	51.2	1.53	1.38	-1.57
5,361.0	26.82	106.63	5,004.9	-420.3	1,615.7	50.7	1.52	1.48	-0.80
5,451.0	28.23	105.40	5,084.7	-431.8	1,655.7	50.9	1.69	1.57	-1.37
5,541.0	26.56	105.05	5,164.6	-442.7	1,695.6	51.7	1.86	-1.86	-0.39
5,631.0	25.50	102.59	5,245.4	-452.1	1,734.0	53.4	1.68	-1.18	-2.73
5,720.0	23.39	101.54	5,326.5	-459.8	1,770.0	56.2	2.42	-2.37	-1.18
5,809.0	24.62	102.41	5,407.8	-467.3	1,805.4	58.9	1.44	1.38	0.98
5,899.0	24.97	103.12	5,489.5	-475.7	1,842.2	61.2	0.51	0.39	0.79
5,989.0	25.06	101.89	5,571.0	-483.9	1,879.3	63.8	0.59	0.10	-1.37
6,079.0	24.62	102.94	5,652.7	-492.0	1,916.3	66.4	0.69	-0.49	1.17
6,169.0	25.15	103.47	5,734.3	-500.7	1,953.1	68.4	0.64	0.59	0.59
6,259.0	24.09	102.94	5,816.2	-509.3	1,989.6	70.4	1.20	-1.18	-0.59
6,348.0	22.77	103.47	5,897.8	-517.3	2,024.1	72.4	1.50	-1.48	0.60
6,438.0	21.81	104.00	5,981.1	-525.5	2,057.3	73.9	1.09	-1.07	0.59
6,529.0	23.13	106.28	6,065.2	-534.6	2,090.8	74.6	1.74	1.45	2.51
6,618.0	23.48	106.11	6,146.9	-544.4	2,124.6	74.7	0.40	0.39	-0.19
6,708.0	24.62	104.70	6,229.1	-554.1	2,160.0	75.3	1.42	1.27	-1.57
6,797.0	25.06	102.94	6,309.9	-563.0	2,196.3	76.9	0.97	0.49	-1.98
6,887.0	24.53	103.29	6,391.6	-571.6	2,233.1	79.0	0.61	-0.59	0.39
6,977.0	25.50	107.51	6,473.1	-581.7	2,269.7	79.6	2.26	1.08	4.69
7,066.0	25.85	107.16	6,553.4	-593.2	2,306.5	79.0	0.43	0.39	-0.39
7,156.0	26.47	105.05	6,634.1	-604.2	2,344.6	79.1	1.24	0.69	-2.34
7,246.0	28.05	102.59	6,714.1	-614.0	2,384.7	80.9	2.16	1.76	-2.73
7,336.0	24.80	100.48	6,794.7	-622.1	2,423.9	84.2	3.76	-3.61	-2.34
7,426.0	24.97	99.43	6,876.4	-628.6	2,461.2	88.4	0.53	0.19	-1.17
7,516.0	22.51	97.84	6,958.8	-634.1	2,497.0	93.3	2.82	-2.73	-1.77
7,605.0	22.34	80.09	7,041.1	-633.5	2,530.6	103.3	7.58	-0.19	-19.94
7,695.0	24.36	62.16	7,123.8	-621.9	2,563.9	123.8	8.18	2.24	-19.92
7,785.0	29.02	50.73	7,204.3	-599.4	2,597.2	154.8	7.68	5.18	-12.70
7,875.0	28.84	46.69	7,283.1	-570.6	2,629.9	191.5	2.18	-0.20	-4.49
7,965.0	31.39	35.62	7,361.0	-536.7	2,659.4	232.4	6.78	2.83	-12.30
8,054.0	36.76	28.76	7,434.7	-494.4	2,685.8	280.3	7.41	6.03	-7.71
8,144.0	41.42	24.54	7,504.5	-443.7	2,711.1	336.1	5.96	5.18	-4.69
8,234.0	51.18	22.43	7,566.6	-384.1	2,736.9	400.6	10.97	10.84	-2.34
8,324.0	61.82	18.92	7,616.3	-313.9	2,763.2	475.3	12.26	11.82	-3.90
8,414.0	70.96	16.46	7,652.3	-235.4	2,788.2	557.7	10.46	10.16	-2.73
8,504.0	80.02	11.89	7,674.8	-151.0	2,809.4	644.6	11.20	10.07	-5.08
8,593.0	85.65	6.61	7,685.9	-64.0	2,823.6	732.2	8.64	6.33	-5.93

<b>Company:</b>	POCO Operating	<b>Local Co-ordinate Reference:</b>	Well Brighton Lakes 20-17-2CDH
<b>Project:</b>	Sec.20-T1S-R66W	<b>TVD Reference:</b>	WELL @ 5070.5ft (Ensign 140 RKB - 23.5')
<b>Site:</b>	Brighton Lakes Pad Sec.20-T1S-R66W	<b>MD Reference:</b>	WELL @ 5070.5ft (Ensign 140 RKB - 23.5')
<b>Well:</b>	Brighton Lakes 20-17-2CDH	<b>North Reference:</b>	True
<b>Wellbore:</b>	Brighton Lakes 20-17-2CDH Wellbore #1	<b>Survey Calculation Method:</b>	Minimum Curvature
<b>Design:</b>	Brighton Lakes 20-17-2CDH Wellbore #1	<b>Database:</b>	US_EDM

Survey									
Measured Depth (ft)	Inclination (°)	Azimuth (°)	Vertical Depth (ft)	+N/-S (ft)	+E/-W (ft)	Vertical Section (ft)	Dogleg Rate (°/100usft)	Build Rate (°/100usft)	Turn Rate (°/100usft)
8,683.0	89.78	2.39	7,689.5	25.7	2,830.6	820.2	6.56	4.59	-4.69
8,719.5	90.03	1.96	7,689.6	62.1	2,832.0	855.6	1.35	0.69	-1.17
TPZ - 460'FSL & 496'FEL, Sec.20									
8,773.0	90.40	1.34	7,689.4	115.6	2,833.6	907.3	1.35	0.69	-1.17
8,863.0	89.87	1.34	7,689.1	205.6	2,835.7	994.3	0.59	-0.59	0.00
8,952.0	88.99	0.46	7,690.0	294.6	2,837.1	1,080.1	1.40	-0.99	-0.99
9,042.0	89.08	0.46	7,691.5	384.6	2,837.8	1,166.6	0.10	0.10	0.00
9,132.0	89.96	359.58	7,692.3	474.5	2,837.8	1,253.0	1.38	0.98	-0.98
9,221.0	89.52	358.70	7,692.7	563.5	2,836.5	1,338.0	1.11	-0.49	-0.99
9,311.0	87.58	359.06	7,695.0	653.5	2,834.7	1,423.8	2.19	-2.16	0.40
9,400.0	88.81	358.88	7,697.8	742.4	2,833.1	1,508.8	1.40	1.38	-0.20
9,490.0	89.43	359.41	7,699.2	832.4	2,831.8	1,594.7	0.91	0.69	0.59
9,580.0	87.67	0.11	7,701.4	922.4	2,831.4	1,681.0	2.10	-1.96	0.78
9,669.0	89.52	359.41	7,703.6	1,011.3	2,831.0	1,766.2	2.22	2.08	-0.79
9,759.0	90.48	359.41	7,703.6	1,101.3	2,830.1	1,852.3	1.07	1.07	0.00
9,848.0	90.57	358.35	7,702.8	1,190.3	2,828.4	1,937.2	1.20	0.10	-1.19
9,938.0	90.66	359.06	7,701.8	1,280.3	2,826.3	2,023.0	0.80	0.10	0.79
10,027.0	91.54	359.41	7,700.1	1,369.3	2,825.2	2,108.1	1.06	0.99	0.39
10,117.0	89.69	359.41	7,699.2	1,459.2	2,824.2	2,194.2	2.06	-2.06	0.00
10,207.0	89.96	358.53	7,699.4	1,549.2	2,822.6	2,280.1	1.02	0.30	-0.98
10,297.0	90.75	0.29	7,698.9	1,639.2	2,821.7	2,366.2	2.14	0.88	1.96
10,387.0	89.60	1.16	7,698.6	1,729.2	2,822.8	2,452.9	1.60	-1.28	0.97
10,477.0	90.48	0.64	7,698.6	1,819.2	2,824.2	2,539.6	1.14	0.98	-0.58
10,567.0	89.43	0.81	7,698.6	1,909.2	2,825.4	2,626.3	1.18	-1.17	0.19
10,657.0	90.75	1.52	7,698.5	1,999.2	2,827.2	2,713.2	1.67	1.47	0.79
10,746.0	89.69	1.69	7,698.1	2,088.1	2,829.7	2,799.2	1.21	-1.19	0.19
10,836.0	90.57	1.16	7,697.9	2,178.1	2,831.9	2,886.2	1.14	0.98	-0.59
10,926.0	89.69	359.93	7,697.7	2,268.1	2,832.8	2,972.8	1.68	-0.98	-1.37
11,015.0	89.78	359.76	7,698.1	2,357.1	2,832.5	3,058.2	0.22	0.10	-0.19
11,105.0	90.84	359.58	7,697.7	2,447.1	2,832.0	3,144.4	1.19	1.18	-0.20
11,196.0	90.48	358.35	7,696.6	2,538.1	2,830.4	3,231.2	1.41	-0.40	-1.35
11,286.0	88.81	357.82	7,697.2	2,628.0	2,827.4	3,316.7	1.95	-1.86	-0.59
11,376.0	90.22	358.88	7,697.9	2,718.0	2,824.8	3,402.3	1.96	1.57	1.18
11,465.0	90.84	0.29	7,697.1	2,807.0	2,824.1	3,487.5	1.73	0.70	1.58
11,555.0	91.28	359.23	7,695.4	2,896.9	2,823.8	3,573.8	1.28	0.49	-1.18
11,645.0	90.22	0.11	7,694.3	2,986.9	2,823.2	3,660.0	1.53	-1.18	0.98
11,735.0	89.34	0.99	7,694.6	3,076.9	2,824.1	3,746.6	1.38	-0.98	0.98
11,825.0	89.87	359.93	7,695.2	3,166.9	2,824.8	3,833.2	1.32	0.59	-1.18
11,915.0	88.99	0.99	7,696.1	3,256.9	2,825.6	3,919.7	1.53	-0.98	1.18
12,004.0	89.43	0.46	7,697.4	3,345.9	2,826.7	4,005.5	0.77	0.49	-0.60
12,094.0	89.87	0.29	7,697.9	3,435.9	2,827.3	4,092.0	0.52	0.49	-0.19
12,184.0	90.22	359.93	7,697.8	3,525.9	2,827.4	4,178.4	0.56	0.39	-0.40
12,274.0	91.01	359.76	7,696.9	3,615.9	2,827.2	4,264.7	0.90	0.88	-0.19
12,363.0	90.22	0.64	7,695.9	3,704.9	2,827.5	4,350.2	1.33	-0.89	0.99

<b>Company:</b>	POCO Operating	<b>Local Co-ordinate Reference:</b>	Well Brighton Lakes 20-17-2CDH
<b>Project:</b>	Sec.20-T1S-R66W	<b>TVD Reference:</b>	WELL @ 5070.5ft (Ensign 140 RKB - 23.5')
<b>Site:</b>	Brighton Lakes Pad Sec.20-T1S-R66W	<b>MD Reference:</b>	WELL @ 5070.5ft (Ensign 140 RKB - 23.5')
<b>Well:</b>	Brighton Lakes 20-17-2CDH	<b>North Reference:</b>	True
<b>Wellbore:</b>	Brighton Lakes 20-17-2CDH Wellbore #1	<b>Survey Calculation Method:</b>	Minimum Curvature
<b>Design:</b>	Brighton Lakes 20-17-2CDH Wellbore #1	<b>Database:</b>	US_EDM

Survey									
Measured Depth (ft)	Inclination (°)	Azimuth (°)	Vertical Depth (ft)	+N/-S (ft)	+E/-W (ft)	Vertical Section (ft)	Dogleg Rate (°/100usft)	Build Rate (°/100usft)	Turn Rate (°/100usft)
12,453.0	90.84	0.11	7,695.1	3,794.9	2,828.1	4,436.7	0.91	0.69	-0.59
12,542.0	89.43	0.46	7,694.9	3,883.9	2,828.5	4,522.3	1.63	-1.58	0.39
12,632.0	89.69	0.46	7,695.6	3,973.9	2,829.3	4,608.8	0.29	0.29	0.00
12,721.0	90.22	0.11	7,695.6	4,062.9	2,829.7	4,694.4	0.71	0.60	-0.39
12,811.0	89.87	359.58	7,695.6	4,152.8	2,829.5	4,780.7	0.71	-0.39	-0.59
12,900.0	90.57	0.11	7,695.2	4,241.8	2,829.2	4,866.0	0.99	0.79	0.60
12,989.0	88.72	0.11	7,695.8	4,330.8	2,829.4	4,951.5	2.08	-2.08	0.00
13,079.0	88.29	359.58	7,698.1	4,420.8	2,829.2	5,037.8	0.76	-0.48	-0.59
13,168.0	88.99	358.88	7,700.2	4,509.8	2,828.0	5,122.8	1.11	0.79	-0.79
13,258.0	88.46	0.29	7,702.2	4,599.7	2,827.3	5,209.0	1.67	-0.59	1.57
13,347.0	89.43	0.64	7,703.9	4,688.7	2,828.0	5,294.6	1.16	1.09	0.39
13,437.0	90.48	0.64	7,703.9	4,778.7	2,829.0	5,381.2	1.17	1.17	0.00
13,526.0	90.84	0.11	7,702.9	4,867.7	2,829.6	5,466.8	0.72	0.40	-0.60
13,615.0	91.45	0.29	7,701.1	4,956.7	2,829.9	5,552.3	0.71	0.69	0.20
13,705.0	89.69	0.81	7,700.2	5,046.7	2,830.8	5,638.9	2.04	-1.96	0.58
13,794.0	89.78	359.93	7,700.7	5,135.7	2,831.4	5,724.4	0.99	0.10	-0.99
13,884.0	90.22	359.76	7,700.7	5,225.7	2,831.1	5,810.7	0.52	0.49	-0.19
13,973.0	91.10	359.76	7,699.6	5,314.7	2,830.7	5,896.0	0.99	0.99	0.00
14,062.0	89.43	0.64	7,699.2	5,403.7	2,831.1	5,981.5	2.12	-1.88	0.99
14,151.0	91.01	1.16	7,698.9	5,492.7	2,832.5	6,067.3	1.87	1.78	0.58
14,241.0	89.52	0.46	7,698.5	5,582.6	2,833.7	6,154.0	1.83	-1.66	-0.78
14,330.0	89.96	0.11	7,698.9	5,671.6	2,834.2	6,239.6	0.63	0.49	-0.39
14,420.0	90.40	359.23	7,698.6	5,761.6	2,833.7	6,325.8	1.09	0.49	-0.98
14,510.0	90.66	358.88	7,697.7	5,851.6	2,832.2	6,411.7	0.48	0.29	-0.39
14,600.0	90.22	359.23	7,697.1	5,941.6	2,830.7	6,497.7	0.62	-0.49	0.39
14,689.0	91.10	359.23	7,696.0	6,030.6	2,829.5	6,582.7	0.99	0.99	0.00
14,778.0	89.52	359.06	7,695.5	6,119.6	2,828.2	6,667.8	1.79	-1.78	-0.19
14,868.0	88.20	0.81	7,697.3	6,209.5	2,828.1	6,754.1	2.44	-1.47	1.94
14,957.0	88.72	0.81	7,699.7	6,298.5	2,829.3	6,839.8	0.58	0.58	0.00
15,046.0	89.16	359.58	7,701.4	6,387.5	2,829.6	6,925.3	1.47	0.49	-1.38
15,136.0	89.34	1.34	7,702.6	6,477.5	2,830.3	7,011.9	1.97	0.20	1.96
15,225.0	88.90	0.99	7,703.9	6,566.4	2,832.1	7,097.7	0.63	-0.49	-0.39
15,315.0	89.69	1.16	7,705.0	6,656.4	2,833.8	7,184.6	0.90	0.88	0.19
15,405.0	90.75	1.69	7,704.7	6,746.4	2,836.1	7,271.5	1.32	1.18	0.59
15,494.0	91.36	1.16	7,703.0	6,835.3	2,838.3	7,357.5	0.91	0.69	-0.60
15,584.0	91.80	0.64	7,700.6	6,925.3	2,839.7	7,444.3	0.76	0.49	-0.58
15,673.0	91.19	0.11	7,698.2	7,014.3	2,840.3	7,529.8	0.91	-0.69	-0.60
15,763.0	90.31	359.93	7,697.1	7,104.3	2,840.3	7,616.2	1.00	-0.98	-0.20
15,852.0	89.60	359.76	7,697.1	7,193.3	2,840.1	7,701.5	0.82	-0.80	-0.19
15,941.0	89.78	359.93	7,697.6	7,282.3	2,839.8	7,786.9	0.28	0.20	0.19
16,031.0	90.22	359.06	7,697.6	7,372.3	2,839.0	7,873.0	1.08	0.49	-0.97
16,120.0	90.48	358.53	7,697.1	7,461.2	2,837.2	7,957.9	0.66	0.29	-0.60
16,209.0	89.16	358.35	7,697.4	7,550.2	2,834.7	8,042.6	1.50	-1.48	-0.20

<b>Company:</b>	POCO Operating	<b>Local Co-ordinate Reference:</b>	Well Brighton Lakes 20-17-2CDH
<b>Project:</b>	Sec.20-T1S-R66W	<b>TVD Reference:</b>	WELL @ 5070.5ft (Ensign 140 RKB - 23.5')
<b>Site:</b>	Brighton Lakes Pad Sec.20-T1S-R66W	<b>MD Reference:</b>	WELL @ 5070.5ft (Ensign 140 RKB - 23.5')
<b>Well:</b>	Brighton Lakes 20-17-2CDH	<b>North Reference:</b>	True
<b>Wellbore:</b>	Brighton Lakes 20-17-2CDH Wellbore #1	<b>Survey Calculation Method:</b>	Minimum Curvature
<b>Design:</b>	Brighton Lakes 20-17-2CDH Wellbore #1	<b>Database:</b>	US_EDM

Survey									
Measured Depth (ft)	Inclination (°)	Azimuth (°)	Vertical Depth (ft)	+N/-S (ft)	+E/-W (ft)	Vertical Section (ft)	Dogleg Rate (°/100usft)	Build Rate (°/100usft)	Turn Rate (°/100usft)
16,298.0	89.60	358.35	7,698.3	7,639.2	2,832.2	8,127.2	0.49	0.49	0.00
16,388.0	90.66	359.23	7,698.1	7,729.1	2,830.3	8,213.0	1.53	1.18	0.98
16,477.0	90.04	0.11	7,697.6	7,818.1	2,829.8	8,298.3	1.21	-0.70	0.99
16,567.0	90.22	0.81	7,697.4	7,908.1	2,830.5	8,384.9	0.80	0.20	0.78
16,656.0	90.57	359.58	7,696.7	7,997.1	2,830.8	8,470.4	1.44	0.39	-1.38
16,745.0	90.04	0.46	7,696.3	8,086.1	2,830.8	8,555.8	1.15	-0.60	0.99
16,835.0	90.92	0.81	7,695.5	8,176.1	2,831.8	8,642.4	1.05	0.98	0.39
16,924.0	89.08	0.46	7,695.5	8,265.1	2,832.8	8,728.1	2.10	-2.07	-0.39
17,013.0	89.08	359.41	7,696.9	8,354.1	2,832.7	8,813.5	1.18	0.00	-1.18
17,103.0	89.16	0.64	7,698.3	8,444.1	2,832.7	8,899.9	1.37	0.09	1.37
17,192.0	89.78	359.93	7,699.2	8,533.1	2,833.2	8,985.4	1.06	0.70	-0.80
17,281.0	90.22	359.06	7,699.2	8,622.1	2,832.4	9,070.6	1.10	0.49	-0.98
17,371.0	89.78	0.46	7,699.2	8,712.1	2,832.0	9,156.8	1.63	-0.49	1.56
17,460.0	90.04	359.93	7,699.3	8,801.1	2,832.3	9,242.3	0.66	0.29	-0.60
17,549.0	89.87	359.93	7,699.4	8,890.1	2,832.2	9,327.7	0.19	-0.19	0.00
17,638.0	90.04	359.93	7,699.4	8,979.1	2,832.1	9,413.1	0.19	0.19	0.00
17,728.0	88.81	0.81	7,700.3	9,069.0	2,832.7	9,499.6	1.68	-1.37	0.98
17,817.0	89.43	0.46	7,701.7	9,158.0	2,833.7	9,585.3	0.80	0.70	-0.39
17,907.0	89.87	359.93	7,702.3	9,248.0	2,834.0	9,671.8	0.77	0.49	-0.59
17,996.0	90.75	359.41	7,701.8	9,337.0	2,833.5	9,757.0	1.15	0.99	-0.58
18,085.0	89.69	0.29	7,701.4	9,426.0	2,833.2	9,842.4	1.55	-1.19	0.99
18,175.0	89.60	359.58	7,702.0	9,516.0	2,833.1	9,928.7	0.80	-0.10	-0.79
18,264.0	89.52	358.35	7,702.7	9,605.0	2,831.5	10,013.7	1.38	-0.09	-1.38
18,354.0	89.96	357.65	7,703.1	9,694.9	2,828.4	10,099.1	0.92	0.49	-0.78
18,430.0	89.96	357.65	7,703.1	9,770.9	2,825.3	10,171.1	0.00	0.00	0.00

Design Targets									
Target Name	Dip Angle (°)	Dip Dir. (°)	TVD (ft)	+N/-S (ft)	+E/-W (ft)	Northing (usft)	Easting (usft)	Latitude	Longitude
- hit/miss target									
- Shape									
SHL 400'FSL & 1980'FV	0.00	0.00	1.0	0.0	0.0	1,223,371.29	3,195,769.04	39.944420	-104.801770
- survey hits target center									
- Point									
BHL 460'FNL & 499'FEL	0.00	0.00	7,702.0	9,704.7	2,842.1	1,233,097.75	3,198,534.50	39.971060	-104.791630
- survey misses target center by 16.8ft at 18354.0ft MD (7703.1 TVD, 9694.9 N, 2828.4 E)									
- Point									

Survey Annotations				
Measured Depth (ft)	Vertical Depth (ft)	Local Coordinates		Comment
		+N/-S (ft)	+E/-W (ft)	
8,719.5	7,689.6	62.1	2,832.0	TPZ - 460'FSL & 496'FEL, Sec.20



<b>Company:</b>	POCO Operating	<b>Local Co-ordinate Reference:</b>	Well Brighton Lakes 20-17-2CDH
<b>Project:</b>	Sec.20-T1S-R66W	<b>TVD Reference:</b>	WELL @ 5070.5ft (Ensign 140 RKB - 23.5')
<b>Site:</b>	Brighton Lakes Pad Sec.20-T1S-R66W	<b>MD Reference:</b>	WELL @ 5070.5ft (Ensign 140 RKB - 23.5')
<b>Well:</b>	Brighton Lakes 20-17-2CDH	<b>North Reference:</b>	True
<b>Wellbore:</b>	Brighton Lakes 20-17-2CDH Wellbore #1	<b>Survey Calculation Method:</b>	Minimum Curvature
<b>Design:</b>	Brighton Lakes 20-17-2CDH Wellbore #1	<b>Database:</b>	US_EDM

Checked By: _____	Approved By: _____	Date: _____
-------------------	--------------------	-------------