



Laramie Energy
1401 17th Street
Denver, CO 80202

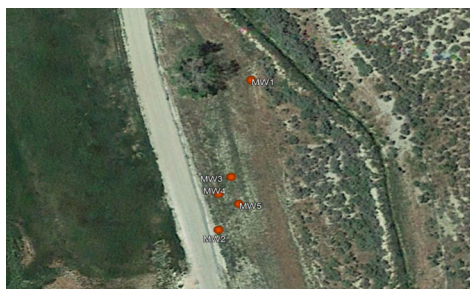
Baker Canyon Spill

SB1 (MW1)










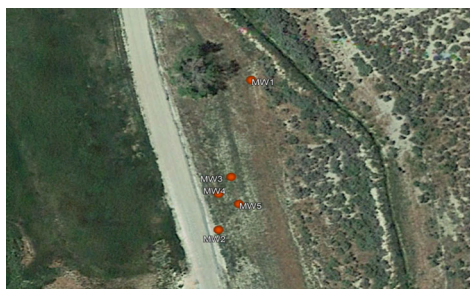
Date Started : 04/29/21
Detector : MiniRae PID
Hole Diameter : 6"
Drilling Method : Solid Stem Auger
Sampling Method : Split Spoon
Drilling Company : DA Smith
Latitude : 39.464976
Longitude : -108.243553
Project Number : 021-054
Logged By : R. Johnson

Depth in Feet	USCS	GRAPHIC	DESCRIPTION	Moisture (%)	Fines (%)	Structure	PID (ppm)	Staining	Recovery (in)	Sample	Blow Count	MW1:
0			Surface: Hydrovac to 8'									
5												
10	CL		8.5-10.5: Silty CLAY with trace siltstone gravel.	10	70	N	0.2	N	6	8.5-10.5	6,6,7,7	
15	CL		13.5-15.5: Silty CLAY with trace siltstone gravel.	10	70	N	0.5	N	8		8,9,9,10	
20	CL		18.5-20.5: Silty CLAY with gravel.	20	70	N	1.0	N	16		5,7,10,12	
25	CL		23.5-25.5: Silty and sandy CLAY with gravel.	20	60	N	3.5	N	24	23.5-25.5	4,6,9,10	
30	CL		28.5-30.5: Silty CLAY	40	80	N	1.3	N	24		4,6,6,10	
35	CL		33.5-35.5: CLAY with trace gravel, no odor.	50	90	N	1.3	N	24		3,4,7,7	
40	CL		38.5-40.5: CLAY with trace gravel. Wet. No odor. Groundwater at 40'.	90	80	N	1.3	N	24		3,4,3,4	
45	CL		43.5-45.5: CLAY, Mottled, 6" dry section, no odor.	90	80	N	0.8	N	24		3,4,7,7	
50	CL		48.5-50.5: CLAY with trace gravel, wet, no odor.	90	80	N	0.4	N	18	48.5-50.5	2,3,4,5	
TD at 53' @ 1045												








Baker Canyon Spill
SB2 (MW2)

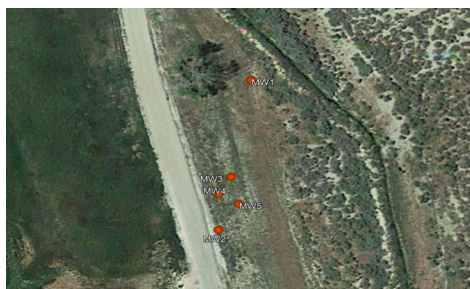
Date Started	: 04/29/21
Detector	: MiniRae PID
Hole Diameter	: 6"
Drilling Method	: Hollow Stem Auger
Sampling Method	: Split Spoon
Drilling Company	: DA Smith
Latitude	: 39.464605
Longitude	: -108.243642
Project Number	: 021-054
Logged By	: R. Johnson

Depth in Feet	USCS	GRAPHIC	DESCRIPTION	Moisture (%)	Fines (%)	Structure	PID (ppm)	Staining	Recovery (in)	Sample	Blow Count	MW2:	
0			Surface: Hydrovac to 8'										
8-10	CL		8-10: Sandy, gravelly, CLAY. Dry, no odor.	20	60	N	2.5	N	24	8-10	3,5,5,7	Hydrated Bentonite 2" Sch-40 Solid PVC Riser	
15-17	CL		15-17: Silty CLAY with trace gravel. Dry. No odor.	10	60	N	2.1	N	24	15-17	6,9,12,11		
20-22	CL		20-22: Silty CLAY. Dry. No odor.	50	70	N	3.3	N	24	20-22	3,3,5,4		
25-27	CH		25-27: CLAY. Trace gravel. Moist, No odor.	60	70	N	7.5	N	24	25-27	2,2,4,4	2" Sch-40 #10 Slotted PVC Screen	
30-32	CH		30-32: Plastic CLAY. 3" gravel at top. Wet. No odor.	100	90	N	2.1	N	24	30-32	1,2,3,4	10-20 Silica Sand	
35-37	GC		35-37: Clayey GRAVEL. Wet. No odor.	100	40	N	3.7	N	20	35-37	3,4,5,4		
40-42	CL		40-42: Gravelly CLAY. Wet. No odor.	100	70	N	1.8	N	12	40-42	3,3,5,10	Fill	
			TD at 42'										








Baker Canyon Spill
SB3 (MW3)

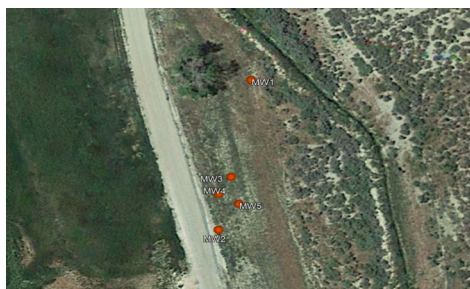
Date Started	: 04/29/21
Detector	: MiniRae PID
Hole Diameter	: 6"
Drilling Method	: Hollow Stem Auger
Sampling Method	: Split Spoon
Drilling Company	: DA Smith
Latitude	: 39.464750
Longitude	: -108.243610
Project Number	: 021-054
Logged By	: R. Johnson

Depth in Feet	USCS	GRAPHIC	DESCRIPTION	Moisture (%)	Fines (%)	Structure	PID (ppm)	Staining	Recovery (in)	Sample	Blow Count	MW3:
0			Surface: Hydrovac to 8'									
8-10	CL		8-10: Hard silty CLAY. Dry, slight odor.	10	90	N	382	N	12	8-10	8,12,12,11	Hydrated Bentonite 2" Sch-40 Solid PVC Riser
15-17	CL		15-17: Silty CLAY with trace gravel. Slight odor.	20	70	N	595	N	18	15-17	5,8,12,15	
20-22	CL		20-22: Sandy CLAY with gravel. No odor.	20	70	N	131	N	24	20-22	3,7,9,10	
25-27	CH		25-27: Plastic silty CLAY. No odor.	50	90	N	476	N	24	25-27	3,4,5,6	
30-32	CH		30-32: Plastic CLAY. No odor. Groundwater at 31'.	100	90	N	4.3	N	24	30-32	2,3,3,4	2" Sch-40 #10 Slotted PVC Screen 10-20 Silica Sand
35-37	CL		35-37: Gravelly CLAY. Wet. No odor.	100	60	N	2.0	N	24	35-37	2,3,4,4	
40-42	CL		40-42: CLAY into weathered shale. Wet. No odor.	100	90	N	1.8	N	24	40-42	2,4,5,5	
TD at 42'												

Baker Canyon Spill
SB4 (MW4)

Date Started	: 04/30/21
Detector	: MiniRae PID
Hole Diameter	: 6"
Drilling Method	: Hollow Stem Auger
Sampling Method	: Split Spoon
Drilling Company	: DA Smith
Latitude	: 39.464682
Longitude	: -108.243651
Project Number	: 021-054
Logged By	: R. Johnson

Depth in Feet	USCS	GRAPHIC	DESCRIPTION	Moisture (%)	Fines (%)	Structure	PID (ppm)	Staining	Recovery (in)	Sample	Blow Count	MW4:
0			Surface: Hydrovac to 8'									
8-10	CL		8-10: Hard silty CLAY. Dry, slight odor.	10	80	N	52.6	N	18	8-10	4, 7, 8, 10	Hydrated Bentonite 2" Sch-40 Solid PVC Riser
15-17	CL		15-17: Silty and sandy CLAY with trace gravel. Dry. No odor.	20	60	N	56.7	N	24	15-17	4, 7, 7, 8	
20-22	CL		20-22: CLAY with gravel. Slightly moist. No odor.	40	80	N	29.4	N	24	20-22	3, 4, 6, 7	
25-27	CL		25-27: CLAY with trace gravel into 3" clayey gravel into clay. Moist to wet. No odor.	70	70	N	59.8	N	24	25-27	1, 2, 3, 3	2" Sch-40 #10 Slotted PVC Screen
30-32	CH		Groundwater at 29' 30-32: Clayey sand into red plastic CLAY. Wet.	100	60	N	2.2	N	24	30-32	1, 1, 2, 3	10-20 Silica Sand
35-37	CH		35-37: Clayey sand into gravelly clay into plastic CLAY. Wet.	100	50	N	4.2	N	24	35-37	1, 2, 3, 3	
40-42	GC		40-42: Clayey GRAVEL into stiff clay. Wet.	100	50	N	1.8	N	24	40-42	1, 2, 3, 3	Fill
TD at 42'												

Baker Canyon Spill
SB5 (MW5)

Date Started	: 04/30/21
Detector	: MiniRae PID
Hole Diameter	: 6"
Drilling Method	: Hollow Stem Auger
Sampling Method	: Split Spoon
Drilling Company	: DA Smith
Latitude	: 39.464671
Longitude	: -108.243593
Project Number	: 021-054
Logged By	: R. Johnson

Depth in Feet	USCS	GRAPHIC	DESCRIPTION	Moisture (%)	Fines (%)	Structure	PID (ppm)	Staining	Recovery (in)	Sample	Blow Count
0			Surface: Hydrovac to 8'								
8-10	CL	[Hatched Box]	8-10: Silty CLAY with trace gravel. Dry, slight odor.	10	60	N	568	N	18	8-10	4,5,9,10
15-17	CL	[Solid Brown Box]	15-17: Sandy CLAY with trace gravel. Hard. No odor. Dry.	10	60	N	119	N	18	15-17	6,7,8,10
20-22	CL	[Solid Brown Box]	20-22: Silty CLAY. Mottled. No odor. Very slightly moist.	30	80	N	55	N	24	20-22	3,5,7,9
25-27	CL	[Solid Brown Box]	25-27: Sandy CLAY into gravelly clay. Mottled. Moist. Slight odor.	50	70	N	525	N	24	25-27	3,4,4,4
30-32	GC	[Solid Brown Box]	30-32: Clayey GRAVEL into plastic clay. Wet.	100	40	N	21	N	6	30-32	3,2,3,4
35-37	CH	[Diagonal Hatched Box]	35-37: Stiff gravelly CLAY. Wet.	100	80	N	5.8	N	24	35-37	2,4,4,5
40-42	CL	[Solid Brown Box]	40-42: Gravelly CLAY. Wet.	100	60	N	3.9	N	24	40-42	2,2,4,4
TD at 42'											

MW5:

- Hydrated Bentonite
- 2" Sch-40 Solid PVC Riser
- 2" Sch-40 #10 Slotted PVC Screen
- 10-20 Silica Sand