

Inspection Photos
Operator: Simcoe
API: 067-07856
Date: 5/28/2021



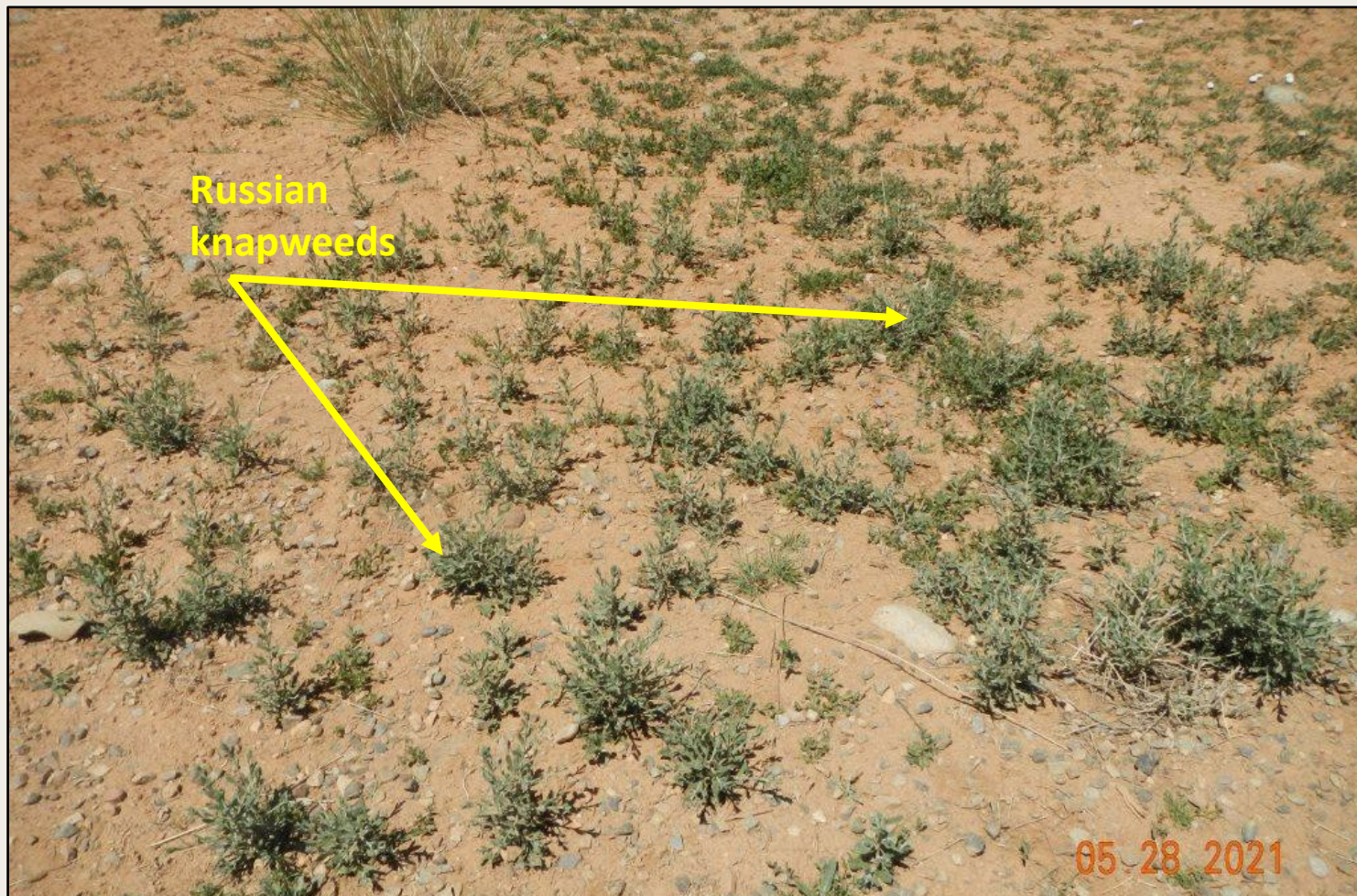
Photo 1. View of project area from the northwestern corner facing center.



Photo 2. View of the northern project area from the northwestern corner facing eastward. Revegetation is progressing in portions with intermediate wheatgrass, crested wheatgrass, and sand dropseed.



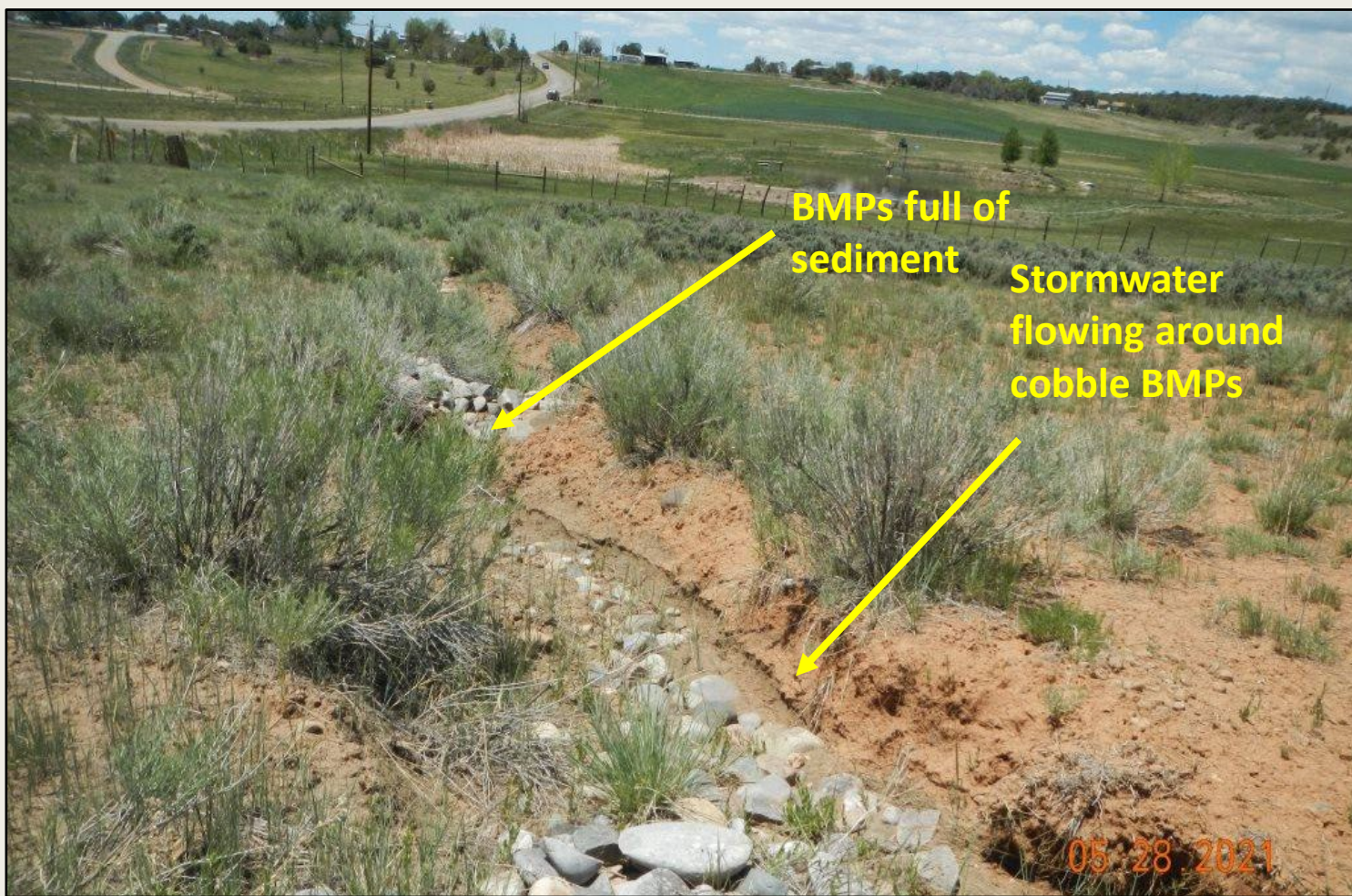
Photos 3. View of the western project area from the northwestern corner facing southward. Revgetation remains sparse and weedy in portions of the western fill slope.



Photos 4. View of Russian knapweeds observed within the project area. Approximately 250 individuals observed.



Photos 5. View of erosional headcutting within the northern project area (facing upslope). Stormwater flows are diverting around cobble BMP and forming a new channel and headcutting.



Photos 6. View of cobble BMPs placed in erosional channel that are full of sediment and stormwater is eroding around the BMPs.



Photo 7. View of reference area vegetation comprised of sagebrush shrubland with scattered pinyon and juniper trees, as well as squirreltail, western wheatgrass, phlox, and penstemon in the understory.



Photo 8. View of reference area vegetation comprised of sagebrush shrubland with scattered pinyon and juniper trees, as well as squirreltail, western wheatgrass, phlox, and penstemon in the understory.