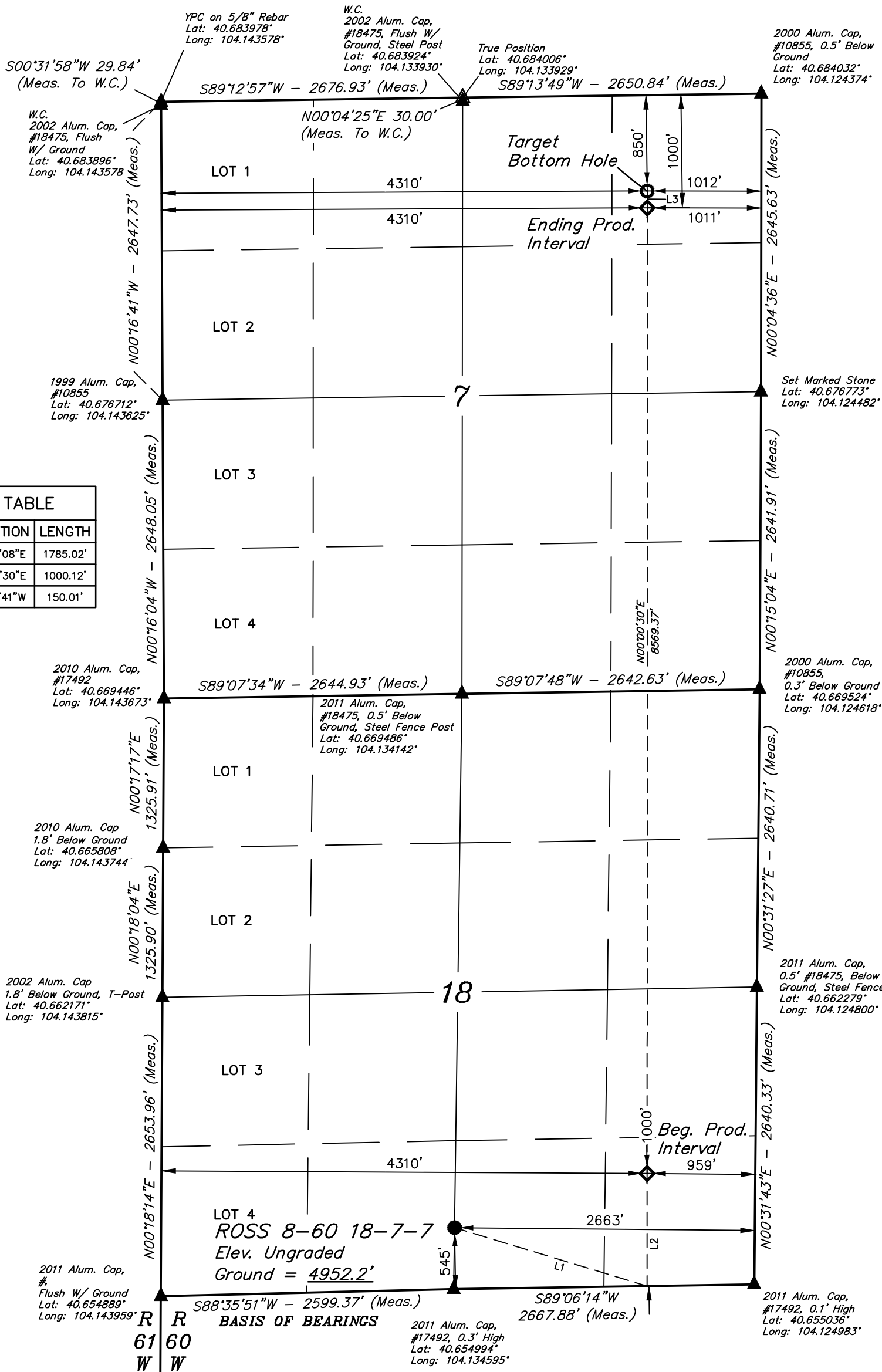


LEGEND:

- = PROPOSED WELLHEAD.
- ◇ = PRODUCTION INTERVAL.
- = TARGET BOTTOM HOLE.
- ▲ = SECTION CORNERS LOCATED. (NAD 83)
- △ = SECTION CORNERS RE-ESTABLISHED. (Not Set on Ground.) (NAD 83)

NOTE:
Distances referenced on plat to section lines are perpendicular.

T8N, R60W, 6th P.M.



LINE TABLE		
LINE	DIRECTION	LENGTH
L1	S73°07'08"E	1785.02'
L2	N00°00'30"E	1000.12'
L3	N00°16'41"W	150.01'

SURFACE LOCATION	
545' FSL 2663' FEL	
NAD 83 (SURFACE LOCATION)	
LATITUDE = 40°39'23.36"	(40.656490°)
LONGITUDE = 104°08'04.35"	(104.134543°)
NAD 27 (SURFACE LOCATION)	
LATITUDE = 40°39'23.41"	(40.656504°)
LONGITUDE = 104°08'02.54"	(104.134038°)
STATE PLANE NAD 83 (CO. NORTH)	
N: 1484918.49'	E: 3378840.13'
STATE PLANE NAD 27 (CO. NORTH)	
N: 484917.48'	E: 2378990.11'

BEG. PROD. INTERVAL	
1000' FSL 4310' FWL 959' FEL	
NAD 83 (BEG. PROD. INTERVAL)	
LATITUDE = 40°39'27.95"	(40.657765°)
LONGITUDE = 104°07'42.14"	(104.128371°)
NAD 27 (BEG. PROD. INTERVAL)	
LATITUDE = 40°39'28.01"	(40.657780°)
LONGITUDE = 104°07'40.32"	(104.127867°)
STATE PLANE NAD 83 (CO. NORTH)	
N: 1485409.60'	E: 3380545.14'
STATE PLANE NAD 27 (CO. NORTH)	
N: 485408.55'	E: 2380695.16'

ENDING PROD. INTERVAL	
1000' FNL 4310' FWL 1011' FEL	
NAD 83 (ENDING PROD. INTERVAL)	
LATITUDE = 40°40'52.60"	(40.681278°)
LONGITUDE = 104°07'41.02"	(104.128060°)
NAD 27 (ENDING PROD. INTERVAL)	
LATITUDE = 40°40'52.65"	(40.681292°)
LONGITUDE = 104°07'39.20"	(104.127556°)
STATE PLANE NAD 83 (CO. NORTH)	
N: 1493976.16'	E: 3380498.82'
STATE PLANE NAD 27 (CO. NORTH)	
N: 493974.95'	E: 2380648.73'

TARGET BOTTOM HOLE	
850' FNL 4310' FWL 1012' FEL	
NAD 83 (TARGET BOTTOM HOLE)	
LATITUDE = 40°40'54.08"	(40.681690°)
LONGITUDE = 104°07'41.01"	(104.128058°)
NAD 27 (TARGET BOTTOM HOLE)	
LATITUDE = 40°40'54.13"	(40.681704°)
LONGITUDE = 104°07'39.19"	(104.127553°)
STATE PLANE NAD 83 (CO. NORTH)	
N: 1494126.11'	E: 3380497.26'
STATE PLANE NAD 27 (CO. NORTH)	
N: 494124.90'	E: 2380647.17'

PDOP = 1.9



CERTIFICATE OF REGISTRATION
THIS IS TO CERTIFY THAT THE ABOVE PLAT WAS PREPARED FROM FIELD NOTES OF ACTUAL SURVEYS MADE BY ME OR UNDER MY SUPERVISION AND THAT THE SAME ARE TRUE AND CORRECT TO THE BEST OF MY KNOWLEDGE AND BELIEF.



REV: 2 03-25-21 C.IVIE (BPI, EPI & TBH MOVE)

BASIS OF ELEVATION
OPUS SOLUTION GENERATED NAVD 88

UELS, LLC
Corporate Office * 85 South 200 East
Vernal, UT 84078 * (435) 789-1017



BISON OIL & GAS II
ROSS 8-60 18-7-7
SW 1/4 SE 1/4, SECTION 18, T8N, R60W, 6th P.M.
WELD COUNTY, COLORADO

SURVEYED BY	CHAD MEIERS, O.R.	02-25-20	SCALE
DRAWN BY	C.IVIE	05-07-20	1" = 1000'

WELL LOCATION PLAT