

Brian S. Rottinghaus—On behalf of Let40, Inc.  
Colorado Licensed Professional Land Surveyor No. 38571 DATE: 4/30/2021  
PROJECT#: 2017080

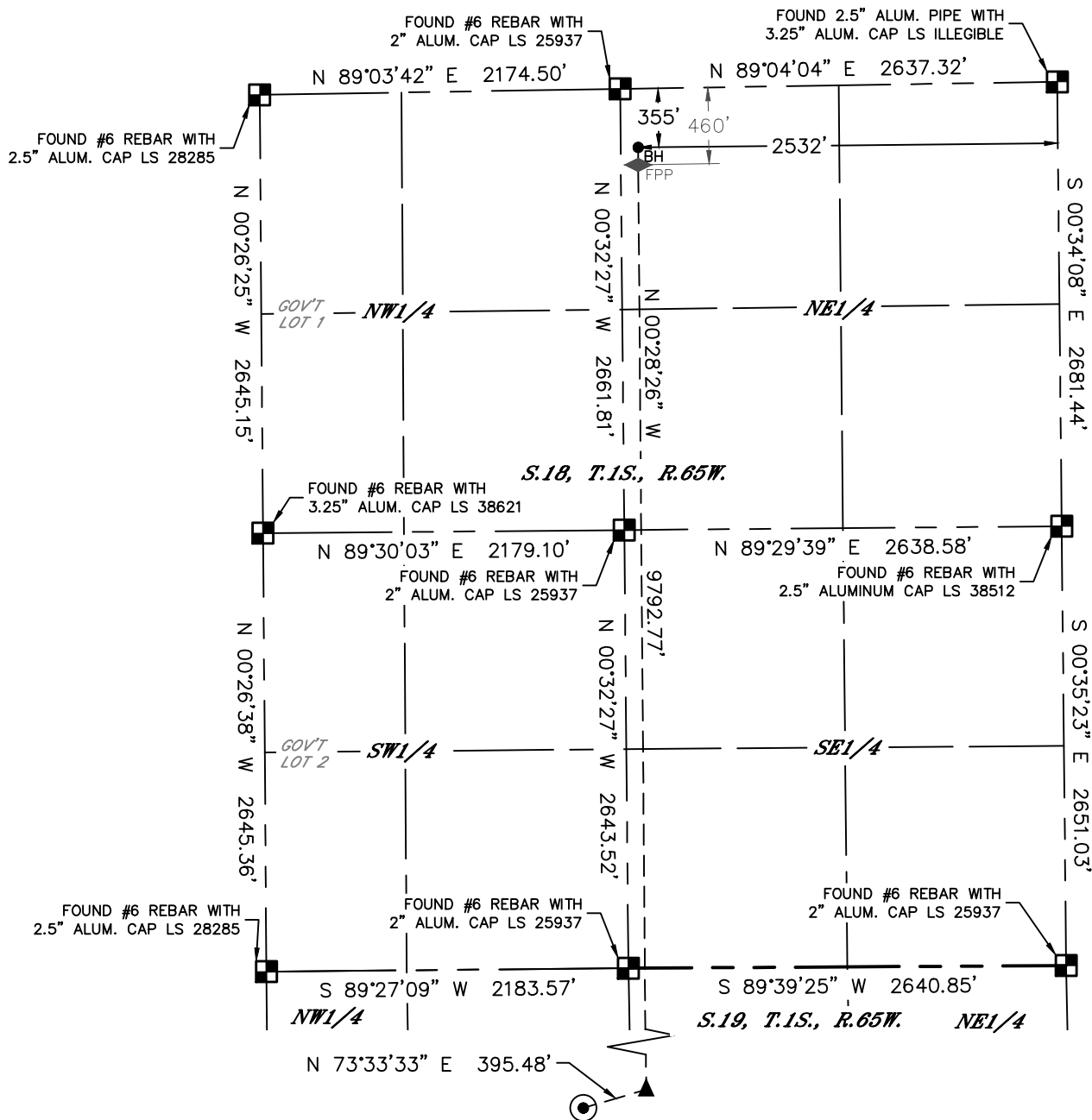


Lat40°, Inc. 6250 W. 10th Street, Unit 2, Greeley, CO 970-515-5294

# WELL LOCATION CERTIFICATE

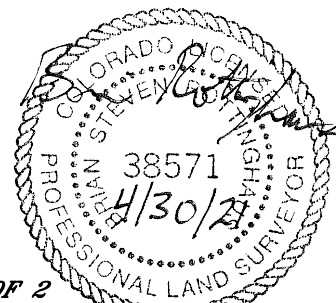
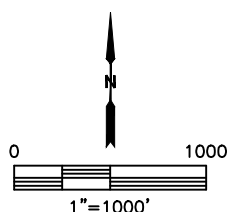
CONNER 19-18-2NBH

SECTION: 19  
TOWNSHIP: 1S  
RANGE: 65W  
6TH. P.M.  
ADAMS COUNTY, CO



## LEGEND

- = ALIQUOT MONUMENT AS DESCRIBED
- = CALCULATED POSITION
- = SURFACE HOLE LOCATION (SHL)
- ▲ = ENTRY POINT LOCATION (EP)
- ◆ = FIRST PERF. POINT (FPP)
- = BOTTOM HOLE LOCATION (BHL)



SHEET 2 OF 2

Brian S. Rottinghaus—On behalf of Lat40°, Inc.  
Colorado Licensed Professional Land Surveyor No. 38571  
DATE: 4/30/2021  
PROJECT#: 2017080