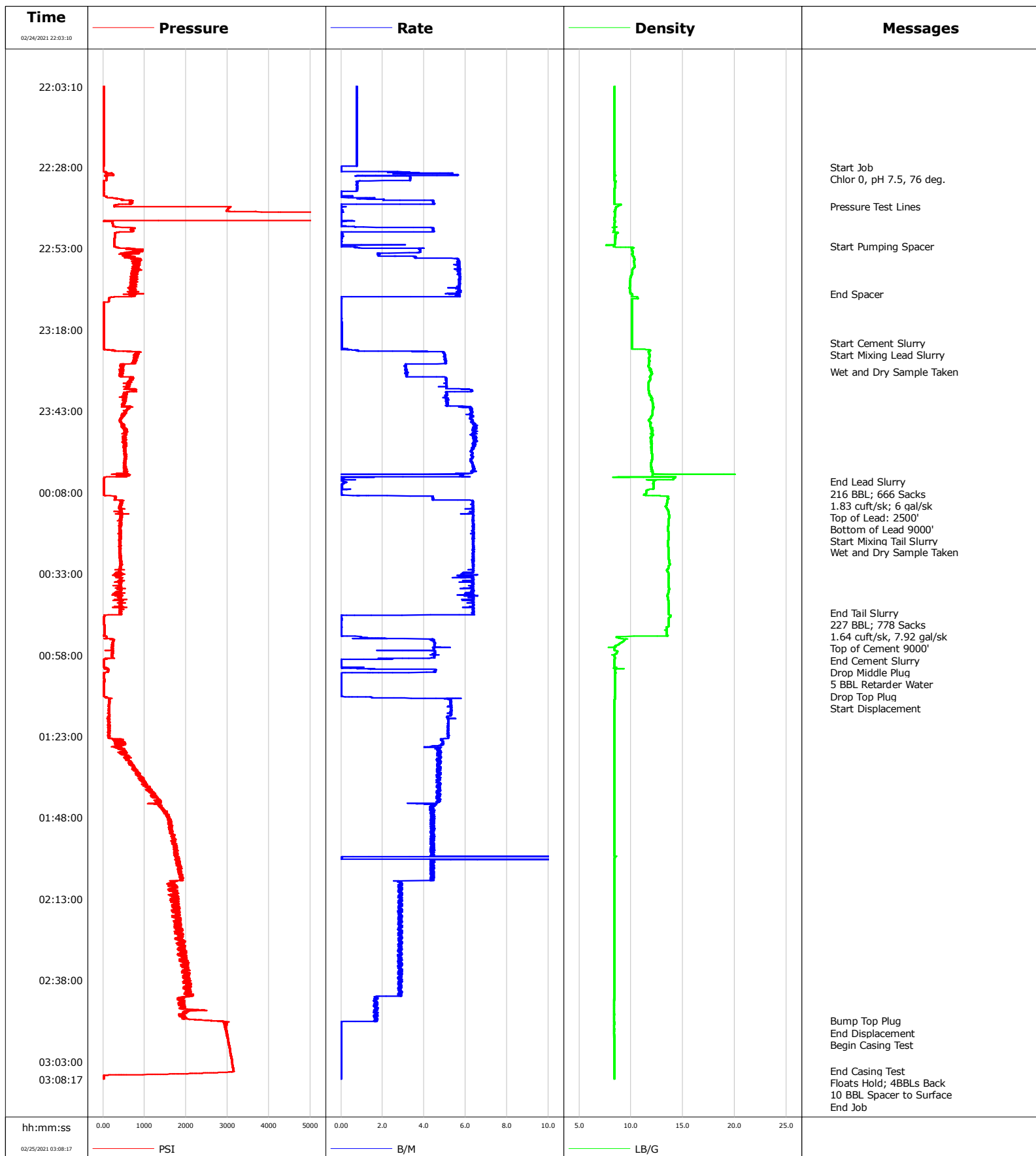


**Well** Nelson 35-17HZ  
**Field** Wattenberg  
**Engineer** Tyler Devillier  
**Country** United States

**Client** Oxy  
**SIR No.** EAJ7-01742  
**Job Type** Production  
**Job Date** 02-24-2021





# Cementing Service Report

				Customer Oxy		Job Number EAJ7-01742	
Well Nelson 35-17HZ		Location (legal) PD 461		Schlumberger Location Cheyenne		Job Start Feb/24/2021	
Field Wattenberg		Formation Name/Type		Deviation deg	Bit Size in	Well MD 16088.0 ft	Well TVD 7567.0 ft
County Weld		State/Province Colorado		BHP psi	BHST 230 degF	BHCT 230 degF	Pore Press. Gradient lb/gal
Well Master 0066094891		API/UWI 05-123-51250-00-00					
Rig Name PD 461	Drilled For	Service Via	Casing/Liner				
			Depth, ft	Size, in	Weight, lb/ft	Grade	Thread
Offshore Zone	Well Class	Well Type	1867.0	9.6	36.0	J-55	BTC
			16088.0	5.5	17.0	P-110	BTC
Drilling Fluid Type		Max. Density lb/gal	Plastic Viscosity cP	Tubing/Drill Pipe			
				T/D	Depth, ft	Size, in	Weight, lb/ft
Service Line Cementing	Job Type Production						
Max. Allowed Tub. Press psi	Max. Allowed Ann. Press psi	WH Connection Double Cement Head	Perforations/Open Hole				
			Top, ft	Bottom, ft	shot/ft	No. of Shots	Total Interval ft
			ft	ft			
			ft	ft			Diameter in
			Treat Down	Displacement bbl	Packer Type	Packer Depth ft	
			Tubing Vol. bbl	Casing Vol. bbl	Annular Vol. bbl	Openhole Vol. bbl	
Casing/Tubing Secured <input type="checkbox"/>		1 Hole Vol. Circulated prior to Cement <input type="checkbox"/>		Casing Tools		Squeeze Job	
Lift Pressure psi				Shoe Type		Squeeze Type	
Pipe Rotated <input type="checkbox"/>		Pipe Reciprocated <input type="checkbox"/>		Shoe Depth ft		Tool Type	
No. Centralizers		Top Plugs	Bottom Plugs	Stage Tool Type		Tool Depth ft	
Cement Head Type			Stage Tool Depth ft		Tail Pipe Size in		
Job Scheduled For Feb/24/2021		Arrived on Location Feb/24/2021	Leave Location Feb/24/2021	Collar Type		Tail Pipe Depth ft	
				Collar Depth ft		Sqz. Total Vol. bbl	
Date	Time 24-hr clock	Treating Pressure PSI	Flow Rate B/M	Density LB/G	Message		
02/24/2021	22:03:10	13	0.8	8.41	Started Acquisition		
02/24/2021	22:03:40	13	0.7	8.41			
02/24/2021	22:04:10	13	0.7	8.41			
02/24/2021	22:04:40	14	0.8	8.41			
02/24/2021	22:05:10	13	0.7	8.41			
02/24/2021	22:05:40	13	0.7	8.41			
02/24/2021	22:06:10	13	0.7	8.41			
02/24/2021	22:06:40	13	0.7	8.41			
02/24/2021	22:07:40	13	0.7	8.41			
02/24/2021	22:08:10	13	0.7	8.41			
02/24/2021	22:08:40	13	0.7	8.41			
02/24/2021	22:09:10	13	0.7	8.41			
02/24/2021	22:09:40	13	0.7	8.41			
02/24/2021	22:10:10	13	0.7	8.41			
02/24/2021	22:10:40	14	0.8	8.41			
02/24/2021	22:11:10	14	0.7	8.41			
02/24/2021	22:11:40	13	0.8	8.41			
02/24/2021	22:12:10	13	0.8	8.41			
02/24/2021	22:12:40	13	0.7	8.41			
02/24/2021	22:13:10	13	0.7	8.41			
02/24/2021	22:13:40	13	0.7	8.41			

Well Nelson 35-17HZ			Field Wattenberg		Job Start Feb/24/2021	Customer Oxy	Job Number EAJ7-01742
Date	Time 24-hr clock	Treating Pressure PSI	Flow Rate B/M	Density LB/G	Message		
02/24/2021	22:14:40	13	0.8	8.41			
02/24/2021	22:15:10	13	0.8	8.41			
02/24/2021	22:15:40	13	0.7	8.41			
02/24/2021	22:16:10	13	0.7	8.41			
02/24/2021	22:16:40	13	0.8	8.41			
02/24/2021	22:17:10	13	0.7	8.41			
02/24/2021	22:17:40	13	0.8	8.41			
02/24/2021	22:18:10	13	0.7	8.41			
02/24/2021	22:18:40	13	0.7	8.41			
02/24/2021	22:19:10	14	0.8	8.41			
02/24/2021	22:19:40	13	0.8	8.41			
02/24/2021	22:20:10	13	0.7	8.41			
02/24/2021	22:20:40	13	0.7	8.41			
02/24/2021	22:21:10	13	0.7	8.41			
02/24/2021	22:21:40	13	0.7	8.41			
02/24/2021	22:22:10	13	0.7	8.41			
02/24/2021	22:22:40	13	0.7	8.41			
02/24/2021	22:23:10	13	0.7	8.41			
02/24/2021	22:23:40	13	0.7	8.41			
02/24/2021	22:24:10	13	0.7	8.41			
02/24/2021	22:24:40	13	0.8	8.41			
02/24/2021	22:25:10	13	0.7	8.41			
02/24/2021	22:25:40	13	0.7	8.41			
02/24/2021	22:26:10	13	0.8	8.41			
02/24/2021	22:26:40	13	0.7	8.41			
02/24/2021	22:27:10	13	0.8	8.41			
02/24/2021	22:27:40	13	0.7	8.41			
02/24/2021	22:28:00	10	0.0	8.41	Start Job		
02/24/2021	22:28:02	10	0.0	8.41	Chlor 0, pH 7.5, 76 deg.		
02/24/2021	22:28:10	11	0.0	8.41			
02/24/2021	22:28:40	10	0.0	8.41			
02/24/2021	22:29:10	10	0.0	8.41			
02/24/2021	22:29:40	50	2.5	8.41			
02/24/2021	22:30:10	81	2.9	8.42			
02/24/2021	22:30:40	37	0.9	8.49			
02/24/2021	22:31:10	81	3.3	8.41			
02/24/2021	22:31:40	75	3.3	8.41			
02/24/2021	22:32:10	75	3.3	8.41			
02/24/2021	22:32:40	15	0.8	8.48			
02/24/2021	22:33:10	15	0.8	8.45			
02/24/2021	22:33:40	14	0.8	8.44			
02/24/2021	22:34:10	14	0.8	8.43			
02/24/2021	22:34:40	14	0.8	8.43			
02/24/2021	22:35:10	13	0.8	8.42			
02/24/2021	22:35:40	10	0.0	8.42			
02/24/2021	22:36:10	12	0.0	8.41			
02/24/2021	22:36:40	15	0.0	8.41			
02/24/2021	22:37:10	79	0.0	8.41			
02/24/2021	22:37:40	324	1.3	8.43			
02/24/2021	22:38:10	450	2.0	8.41			
02/24/2021	22:38:40	645	4.4	8.41			
02/24/2021	22:39:10	635	4.5	8.41			
02/24/2021	22:39:40	305	0.0	9.07			
02/24/2021	22:40:00	272	0.0	8.72	Pressure Test Lines		

Well Nelson 35-17HZ			Field Wattenberg		Job Start Feb/24/2021	Customer Oxy	Job Number EAJ7-01742
Date	Time 24-hr clock	Treating Pressure PSI	Flow Rate B/M	Density LB/G	Message		
02/24/2021	22:41:10	2991	0.0	8.47			
02/24/2021	22:41:40	3168	0.0	8.35			
02/24/2021	22:42:10	5202	0.0	8.44			
02/24/2021	22:42:40	5167	0.0	8.44			
02/24/2021	22:43:10	5132	0.0	8.43			
02/24/2021	22:43:40	5108	0.0	8.43			
02/24/2021	22:44:10	5082	0.0	8.43			
02/24/2021	22:44:40	22	0.3	8.46			
02/24/2021	22:45:10	224	0.0	8.42			
02/24/2021	22:45:40	231	0.0	8.42			
02/24/2021	22:46:10	238	0.0	8.40			
02/24/2021	22:46:40	672	4.4	8.40			
02/24/2021	22:47:10	659	4.4	8.40			
02/24/2021	22:47:40	696	4.5	8.34			
02/24/2021	22:48:10	320	0.0	8.74			
02/24/2021	22:48:40	284	0.1	8.54			
02/24/2021	22:49:10	280	0.1	8.49			
02/24/2021	22:49:40	276	0.0	8.48			
02/24/2021	22:50:10	273	0.0	8.47			
02/24/2021	22:50:40	270	0.0	8.47			
02/24/2021	22:51:10	268	0.0	8.47			
02/24/2021	22:51:40	267	0.0	8.46			
02/24/2021	22:52:10	265	0.0	8.39	Start Pumping Spacer		
02/24/2021	22:52:40	346	0.6	10.04			
02/24/2021	22:53:10	783	3.8	10.07			
02/24/2021	22:53:40	800	3.8	10.09			
02/24/2021	22:54:10	703	3.8	10.17			
02/24/2021	22:54:40	868	1.9	10.10			
02/24/2021	22:55:10	541	1.8	10.15			
02/24/2021	22:55:40	605	3.5	10.26			
02/24/2021	22:56:10	762	5.6	10.31			
02/24/2021	22:56:40	759	5.7	10.29			
02/24/2021	22:57:10	764	5.7	10.28			
02/24/2021	22:57:40	704	5.6	10.30			
02/24/2021	22:58:10	859	5.6	10.33			
02/24/2021	22:58:40	817	5.7	10.35			
02/24/2021	22:59:10	720	5.7	10.22			
02/24/2021	22:59:40	795	5.7	10.12			
02/24/2021	23:00:10	754	5.7	10.11			
02/24/2021	23:00:40	796	5.7	10.08			
02/24/2021	23:01:10	805	5.7	10.03			
02/24/2021	23:01:40	736	5.7	9.98			
02/24/2021	23:02:10	672	5.7	9.95			
02/24/2021	23:02:40	792	5.7	9.92			
02/24/2021	23:03:10	756	5.7	9.90			
02/24/2021	23:03:40	651	5.7	9.90			
02/24/2021	23:04:10	748	5.7	9.91			
02/24/2021	23:04:40	698	5.7	9.89			
02/24/2021	23:05:10	686	5.7	9.85			
02/24/2021	23:05:40	723	5.7	9.88			
02/24/2021	23:06:10	696	5.8	9.92			
02/24/2021	23:06:40	705	5.7	9.96			
02/24/2021	23:07:00	652	5.7	10.11	End Spacer		
02/24/2021	23:07:10	767	5.7	10.11			

Well Nelson 35-17HZ			Field Wattenberg		Job Start Feb/24/2021	Customer Oxy	Job Number EAJ7-01742
Date	Time 24-hr clock	Treating Pressure PSI	Flow Rate B/M	Density LB/G	Message		
02/24/2021	23:08:10	151	0.0	10.61			
02/24/2021	23:08:40	138	0.0	10.05			
02/24/2021	23:09:10	135	0.0	10.05			
02/24/2021	23:09:40	17	0.0	10.06			
02/24/2021	23:10:10	17	0.0	10.06			
02/24/2021	23:10:40	17	0.0	10.06			
02/24/2021	23:11:10	17	0.0	10.06			
02/24/2021	23:11:40	16	0.0	10.06			
02/24/2021	23:12:10	16	0.0	10.06			
02/24/2021	23:12:40	16	0.0	10.06			
02/24/2021	23:13:10	15	0.0	10.06			
02/24/2021	23:13:40	15	0.0	10.06			
02/24/2021	23:14:40	15	0.0	10.06			
02/24/2021	23:15:10	15	0.0	10.06			
02/24/2021	23:15:40	15	0.0	10.06			
02/24/2021	23:16:10	15	0.0	10.06			
02/24/2021	23:16:40	15	0.0	10.06			
02/24/2021	23:17:10	15	0.0	10.06			
02/24/2021	23:17:40	15	0.0	10.06			
02/24/2021	23:18:10	15	0.0	10.06			
02/24/2021	23:18:40	15	0.0	10.06			
02/24/2021	23:19:10	15	0.0	10.06			
02/24/2021	23:19:40	15	0.0	10.07			
02/24/2021	23:20:10	15	0.0	10.06			
02/24/2021	23:20:40	15	0.0	10.06			
02/24/2021	23:21:10	15	0.0	10.06			
02/24/2021	23:21:40	15	0.0	10.07			
02/24/2021	23:22:00	15	0.0	10.06	Start Cement Slurry		
02/24/2021	23:22:10	15	0.0	10.07			
02/24/2021	23:22:40	15	0.0	10.07			
02/24/2021	23:23:00	14	0.0	10.07	Start Mixing Lead Slurry		
02/24/2021	23:23:10	15	0.0	10.07			
02/24/2021	23:23:40	15	0.0	10.07			
02/24/2021	23:24:10	161	0.3	11.75			
02/24/2021	23:24:40	721	4.2	11.71			
02/24/2021	23:25:10	803	5.0	11.73			
02/24/2021	23:25:40	789	5.0	11.78			
02/24/2021	23:26:10	772	5.0	11.79			
02/24/2021	23:26:40	756	5.0	11.71			
02/24/2021	23:27:10	817	5.0	11.73			
02/24/2021	23:27:40	744	5.0	11.78			
02/24/2021	23:28:10	710	5.0	11.74			
02/24/2021	23:28:40	423	3.1	11.74			
02/24/2021	23:29:10	411	3.0	11.69			
02/24/2021	23:29:40	489	3.1	11.78			
02/24/2021	23:30:10	433	3.1	11.89			
02/24/2021	23:30:40	500	3.1	11.86			
02/24/2021	23:31:00	430	3.1	11.96	Wet and Dry Sample Taken		
02/24/2021	23:31:10	469	3.3	11.97			
02/24/2021	23:31:40	420	3.1	11.98			
02/24/2021	23:32:10	485	3.1	11.85			
02/24/2021	23:32:40	675	5.0	11.81			
02/24/2021	23:33:10	722	5.1	11.86			
02/24/2021	23:33:40	630	5.1	11.78			

Well Nelson 35-17HZ			Field Wattenberg		Job Start Feb/24/2021	Customer Oxy	Job Number EAJ7-01742
Date	Time 24-hr clock	Treating Pressure PSI	Flow Rate B/M	Density LB/G	Message		
02/24/2021	23:34:40	610	5.1	11.69			
02/24/2021	23:35:10	628	5.1	11.68			
02/24/2021	23:35:40	601	5.1	11.70			
02/24/2021	23:36:10	564	5.1	11.71			
02/24/2021	23:36:40	706	6.3	11.71			
02/24/2021	23:37:10	556	5.1	11.72			
02/24/2021	23:37:40	531	5.1	11.76			
02/24/2021	23:38:10	506	5.1	11.80			
02/24/2021	23:38:40	397	5.0	11.95			
02/24/2021	23:39:10	535	5.1	12.02			
02/24/2021	23:39:40	516	5.2	11.96			
02/24/2021	23:40:10	533	5.2	12.08			
02/24/2021	23:40:40	483	5.1	12.10			
02/24/2021	23:41:10	459	5.1	12.10			
02/24/2021	23:41:40	673	6.2	12.15			
02/24/2021	23:42:10	601	6.3	12.14			
02/24/2021	23:42:40	602	6.3	12.09			
02/24/2021	23:43:10	530	6.3	12.07			
02/24/2021	23:43:40	554	6.3	12.09			
02/24/2021	23:44:10	493	6.3	12.04			
02/24/2021	23:44:40	471	6.3	11.94			
02/24/2021	23:45:10	452	6.2	11.88			
02/24/2021	23:45:40	411	6.3	11.75			
02/24/2021	23:46:10	406	6.4	11.78			
02/24/2021	23:46:40	447	6.4	11.91			
02/24/2021	23:47:10	455	6.5	11.85			
02/24/2021	23:48:10	511	6.4	12.07			
02/24/2021	23:48:40	522	6.4	12.03			
02/24/2021	23:49:10	572	6.5	11.98			
02/24/2021	23:49:40	548	6.4	12.07			
02/24/2021	23:50:10	545	6.3	12.13			
02/24/2021	23:50:40	512	6.3	12.04			
02/24/2021	23:51:10	470	6.4	11.94			
02/24/2021	23:51:40	483	6.5	11.92			
02/24/2021	23:52:10	527	6.4	11.97			
02/24/2021	23:52:40	533	6.5	11.95			
02/24/2021	23:53:10	515	6.5	11.99			
02/24/2021	23:53:40	545	6.4	11.96			
02/24/2021	23:54:10	525	6.3	11.98			
02/24/2021	23:54:40	549	6.3	11.97			
02/24/2021	23:55:10	543	6.3	11.97			
02/24/2021	23:55:40	553	6.3	11.98			
02/24/2021	23:56:10	525	6.3	12.01			
02/24/2021	23:56:40	533	6.3	12.02			
02/24/2021	23:57:10	547	6.4	12.02			
02/24/2021	23:57:40	563	6.3	12.01			
02/24/2021	23:58:10	529	6.3	11.99			
02/24/2021	23:58:40	553	6.3	11.96			
02/24/2021	23:59:10	540	6.3	11.92			
02/24/2021	23:59:40	549	6.3	11.92			
02/25/2021	00:00:10	539	6.4	11.94			
02/25/2021	00:00:40	525	6.4	11.97			
02/25/2021	00:01:10	552	6.4	12.05			
02/25/2021	00:01:40	555	6.4	12.02			

Well Nelson 35-17HZ			Field Wattenberg		Job Start Feb/24/2021	Customer Oxy	Job Number EAJ7-01742
Date	Time 24-hr clock	Treating Pressure PSI	Flow Rate B/M	Density LB/G	Message		
02/25/2021	00:02:40	504	5.9	12.08			
02/25/2021	00:03:10	573	5.8	12.09			
02/25/2021	00:03:40	23	0.1	14.14			
02/25/2021	00:04:10	19	0.0	11.51			
02/25/2021	00:04:39	18	0.1	12.18	End Lead Slurry		
02/25/2021	00:04:40	18	0.1	12.18			
02/25/2021	00:04:42	18	0.1	12.17	216 BBL; 666 Sacks		
02/25/2021	00:04:43	18	0.1	12.17	1.83 cuft/sk; 6 gal/sk		
02/25/2021	00:04:45	18	0.2	12.17	Top of Lead: 2500'		
02/25/2021	00:04:46	18	0.2	12.18	Bottom of Lead 9000'		
02/25/2021	00:05:10	18	0.1	12.15			
02/25/2021	00:05:40	17	0.0	12.18			
02/25/2021	00:06:10	17	0.0	12.17			
02/25/2021	00:06:40	17	0.0	12.16			
02/25/2021	00:07:10	17	0.0	11.69			
02/25/2021	00:07:28	17	0.0	11.48	Start Mixing Tail Slurry		
02/25/2021	00:07:40	17	0.0	11.45			
02/25/2021	00:08:10	17	0.0	11.45			
02/25/2021	00:08:40	17	0.0	11.29			
02/25/2021	00:09:10	281	4.4	13.56			
02/25/2021	00:09:40	293	4.4	13.54			
02/25/2021	00:10:10	296	4.4	13.55			
02/25/2021	00:10:40	468	6.4	13.48			
02/25/2021	00:11:10	441	6.4	13.48			
02/25/2021	00:11:40	419	6.4	13.48			
02/25/2021	00:12:10	432	6.4	13.36			
02/25/2021	00:12:40	399	6.3	13.43			
02/25/2021	00:13:10	401	6.4	13.50			
02/25/2021	00:13:40	421	6.4	13.57			
02/25/2021	00:14:10	435	6.4	13.63			
02/25/2021	00:14:40	423	6.3	13.66			
02/25/2021	00:15:10	430	6.4	13.67			
02/25/2021	00:15:40	466	6.4	13.68			
02/25/2021	00:16:10	440	6.4	13.63			
02/25/2021	00:16:40	449	6.4	13.61			
02/25/2021	00:17:10	448	6.4	13.62			
02/25/2021	00:17:40	412	6.4	13.61			
02/25/2021	00:18:10	416	6.4	13.59			
02/25/2021	00:18:40	439	6.4	13.55			
02/25/2021	00:19:10	421	6.4	13.54			
02/25/2021	00:19:40	424	6.4	13.56			
02/25/2021	00:20:10	409	6.4	13.58			
02/25/2021	00:20:40	409	6.4	13.59			
02/25/2021	00:21:40	415	6.4	13.59			
02/25/2021	00:22:10	406	6.4	13.58			
02/25/2021	00:22:40	436	6.4	13.58			
02/25/2021	00:23:10	411	6.4	13.56			
02/25/2021	00:23:40	392	6.4	13.55			
02/25/2021	00:24:10	425	6.4	13.55			
02/25/2021	00:24:40	438	6.4	13.57			
02/25/2021	00:25:10	410	6.4	13.59			
02/25/2021	00:25:40	438	6.4	13.57			
02/25/2021	00:26:10	418	6.4	13.59			
02/25/2021	00:26:21	435	6.4	13.59	Wet and Dry Sample Taken		

Well Nelson 35-17HZ			Field Wattenberg		Job Start Feb/24/2021	Customer Oxy	Job Number EAJ7-01742
Date	Time 24-hr clock	Treating Pressure PSI	Flow Rate B/M	Density LB/G	Message		
02/25/2021	00:27:10	416	6.4	13.60			
02/25/2021	00:27:40	433	6.4	13.60			
02/25/2021	00:28:10	416	6.4	13.62			
02/25/2021	00:28:40	427	6.4	13.66			
02/25/2021	00:29:10	453	6.4	13.70			
02/25/2021	00:29:40	413	6.4	13.71			
02/25/2021	00:30:10	431	6.4	13.74			
02/25/2021	00:30:40	444	6.4	13.61			
02/25/2021	00:31:10	430	6.4	13.61			
02/25/2021	00:31:40	396	6.3	13.51			
02/25/2021	00:32:10	405	6.4	13.50			
02/25/2021	00:32:40	399	6.3	13.57			
02/25/2021	00:33:10	310	5.8	13.61			
02/25/2021	00:33:40	288	5.8	13.63			
02/25/2021	00:34:10	411	5.6	13.63			
02/25/2021	00:34:40	435	6.4	13.61			
02/25/2021	00:35:10	433	6.4	13.61			
02/25/2021	00:35:40	409	6.3	13.60			
02/25/2021	00:36:10	402	6.4	13.59			
02/25/2021	00:36:40	244	6.2	13.61			
02/25/2021	00:37:10	352	6.3	13.64			
02/25/2021	00:37:40	409	6.4	13.68			
02/25/2021	00:38:10	459	6.4	13.64			
02/25/2021	00:38:40	421	6.4	13.60			
02/25/2021	00:39:10	412	6.3	13.56			
02/25/2021	00:39:40	468	6.6	13.52			
02/25/2021	00:40:10	425	6.4	13.53			
02/25/2021	00:40:40	417	6.4	13.55			
02/25/2021	00:41:10	410	6.2	13.58			
02/25/2021	00:41:40	455	6.4	13.61			
02/25/2021	00:42:10	433	6.4	13.62			
02/25/2021	00:42:40	410	6.4	13.63			
02/25/2021	00:43:10	431	6.4	13.64			
02/25/2021	00:43:40	428	6.4	13.64			
02/25/2021	00:44:10	429	6.4	13.63			
02/25/2021	00:44:40	417	6.4	13.63			
02/25/2021	00:45:00	405	6.4	13.64	End Tail Slurry		
02/25/2021	00:45:01	424	6.4	13.64	227 BBL; 778 Sacks		
02/25/2021	00:45:03	419	6.3	13.64	1.64 cuft/sk, 7.92 gal/sk		
02/25/2021	00:45:05	409	6.4	13.64	Top of Cement 9000'		
02/25/2021	00:45:07	421	6.4	13.64	End Cement Slurry		
02/25/2021	00:45:10	408	6.4	13.64			
02/25/2021	00:45:40	135	4.3	13.66			
02/25/2021	00:46:10	24	0.0	13.77			
02/25/2021	00:46:40	22	0.1	13.65			
02/25/2021	00:47:10	22	0.1	13.65			
02/25/2021	00:47:40	21	0.0	13.65			
02/25/2021	00:48:10	21	0.0	13.65			
02/25/2021	00:48:40	24	0.0	13.65			
02/25/2021	00:49:10	25	0.0	13.62			
02/25/2021	00:49:40	25	0.0	13.44			
02/25/2021	00:50:10	25	0.0	13.44			
02/25/2021	00:50:40	26	0.0	13.47			
02/25/2021	00:51:10	26	0.0	13.47			



Well Nelson 35-17HZ			Field Wattenberg		Job Start Feb/24/2021	Customer Oxy	Job Number EAJ7-01742
Date	Time 24-hr clock	Treating Pressure PSI	Flow Rate B/M	Density LB/G	Message		
02/25/2021	00:52:10	23	0.0	13.50			
02/25/2021	00:52:40	83	1.3	8.74			
02/25/2021	00:53:10	244	4.4	9.42			
02/25/2021	00:53:40	230	4.5	9.29			
02/25/2021	00:54:10	240	4.5	9.05			
02/25/2021	00:55:10	223	4.5	8.48			
02/25/2021	00:55:40	232	4.4	8.41			
02/25/2021	00:56:10	240	4.5	8.41			
02/25/2021	00:56:40	225	4.5	8.66			
02/25/2021	00:57:10	223	4.5	8.63			
02/25/2021	00:57:40	221	4.4	8.51			
02/25/2021	00:58:10	240	4.5	8.38			
02/25/2021	00:58:40	235	4.5	8.44			
02/25/2021	00:59:10	89	2.5	8.42			
02/25/2021	00:59:40	21	0.0	8.42			
02/25/2021	01:00:10	18	0.0	8.42			
02/25/2021	01:00:40	18	0.0	8.42			
02/25/2021	01:01:10	17	0.0	8.41			
02/25/2021	01:01:40	29	0.9	8.41			
02/25/2021	01:01:42	41	0.2	8.50	Drop Middle Plug		
02/25/2021	01:01:45	37	0.0	8.59	5 BBL Retarder Water		
02/25/2021	01:02:10	59	1.4	9.38			
02/25/2021	01:02:40	122	4.6	8.48			
02/25/2021	01:03:10	114	4.6	8.47			
02/25/2021	01:03:40	27	0.0	8.47			
02/25/2021	01:04:10	17	0.0	8.47			
02/25/2021	01:04:40	16	0.0	8.47			
02/25/2021	01:05:10	21	0.0	8.47			
02/25/2021	01:05:40	25	0.0	8.47			
02/25/2021	01:06:10	24	0.0	8.47			
02/25/2021	01:06:40	23	0.0	8.47			
02/25/2021	01:07:10	24	0.0	8.47			
02/25/2021	01:07:40	23	0.0	8.47			
02/25/2021	01:08:10	23	0.0	8.47			
02/25/2021	01:08:40	23	0.0	8.47			
02/25/2021	01:09:10	23	0.0	8.47			
02/25/2021	01:09:40	23	0.0	8.47			
02/25/2021	01:10:10	23	0.0	8.47			
02/25/2021	01:10:40	24	0.0	8.47			
02/25/2021	01:10:46	25	0.0	8.47	Drop Top Plug		
02/25/2021	01:10:48	66	0.4	8.41	Start Displacement		
02/25/2021	01:11:10	127	2.6	8.46			
02/25/2021	01:11:40	147	5.3	8.43			
02/25/2021	01:12:10	155	5.3	8.42			
02/25/2021	01:12:40	138	5.3	8.42			
02/25/2021	01:13:10	145	5.3	8.42			
02/25/2021	01:13:40	137	5.3	8.41			
02/25/2021	01:14:10	140	5.3	8.42			
02/25/2021	01:14:40	152	5.3	8.41			
02/25/2021	01:15:10	141	5.3	8.41			
02/25/2021	01:15:40	134	5.3	8.40			
02/25/2021	01:16:10	147	5.3	8.40			
02/25/2021	01:16:40	140	5.3	8.40			
02/25/2021	01:17:10	143	5.1	8.40			

Well Nelson 35-17HZ			Field Wattenberg		Job Start Feb/24/2021	Customer Oxy	Job Number EAJ7-01742
Date	Time 24-hr clock	Treating Pressure PSI	Flow Rate B/M	Density LB/G	Message		
02/25/2021	01:18:10	149	5.2	8.41			
02/25/2021	01:18:40	132	5.2	8.41			
02/25/2021	01:19:10	120	5.2	8.40			
02/25/2021	01:19:40	160	5.2	8.40			
02/25/2021	01:20:10	133	5.1	8.39			
02/25/2021	01:20:40	127	5.2	8.39			
02/25/2021	01:21:10	159	5.2	8.39			
02/25/2021	01:21:40	151	5.2	8.39			
02/25/2021	01:22:10	125	5.2	8.39			
02/25/2021	01:22:40	145	5.2	8.39			
02/25/2021	01:23:10	143	5.1	8.39			
02/25/2021	01:23:40	200	5.0	8.39			
02/25/2021	01:24:10	470	4.8	8.39			
02/25/2021	01:24:40	400	4.9	8.39			
02/25/2021	01:25:10	287	4.9	8.39			
02/25/2021	01:25:40	422	4.9	8.39			
02/25/2021	01:26:10	332	4.3	8.39			
02/25/2021	01:26:40	363	4.8	8.39			
02/25/2021	01:27:10	533	4.6	8.39			
02/25/2021	01:27:40	393	4.7	8.39			
02/25/2021	01:28:40	583	4.7	8.39			
02/25/2021	01:29:10	617	4.7	8.39			
02/25/2021	01:29:40	530	4.8	8.39			
02/25/2021	01:30:10	617	4.7	8.39			
02/25/2021	01:30:40	652	4.7	8.39			
02/25/2021	01:31:10	608	4.8	8.39			
02/25/2021	01:31:40	700	4.7	8.39			
02/25/2021	01:32:10	727	4.7	8.39			
02/25/2021	01:32:40	784	4.8	8.39			
02/25/2021	01:33:10	736	4.7	8.39			
02/25/2021	01:33:40	807	4.7	8.39			
02/25/2021	01:34:10	793	4.8	8.39			
02/25/2021	01:34:40	874	4.8	8.39			
02/25/2021	01:35:10	898	4.6	8.39			
02/25/2021	01:35:40	952	4.8	8.39			
02/25/2021	01:36:10	957	4.7	8.39			
02/25/2021	01:36:40	1006	4.7	8.39			
02/25/2021	01:37:10	1011	4.7	8.39			
02/25/2021	01:37:40	1002	4.7	8.39			
02/25/2021	01:38:10	1077	4.8	8.39			
02/25/2021	01:38:40	1131	4.7	8.39			
02/25/2021	01:39:10	1122	4.7	8.39			
02/25/2021	01:39:40	1148	4.6	8.39			
02/25/2021	01:40:10	1113	4.7	8.39			
02/25/2021	01:40:40	1252	4.7	8.39			
02/25/2021	01:41:10	1170	4.8	8.39			
02/25/2021	01:41:40	1294	4.6	8.39			
02/25/2021	01:42:10	1322	4.6	8.39			
02/25/2021	01:42:40	1361	4.8	8.39			
02/25/2021	01:43:10	1340	4.6	8.39			
02/25/2021	01:43:40	1271	3.7	8.39			
02/25/2021	01:44:10	1414	4.4	8.39			
02/25/2021	01:44:40	1419	4.4	8.39			
02/25/2021	01:45:10	1442	4.5	8.39			

Well Nelson 35-17HZ			Field Wattenberg		Job Start Feb/24/2021	Customer Oxy	Job Number EAJ7-01742
Date	Time 24-hr clock	Treating Pressure PSI	Flow Rate B/M	Density LB/G	Message		
02/25/2021	01:46:10	1477	4.5	8.39			
02/25/2021	01:46:40	1519	4.4	8.39			
02/25/2021	01:47:10	1586	4.5	8.39			
02/25/2021	01:47:40	1594	4.4	8.39			
02/25/2021	01:48:10	1583	4.5	8.39			
02/25/2021	01:48:40	1594	4.3	8.39			
02/25/2021	01:49:10	1656	4.5	8.39			
02/25/2021	01:49:40	1603	4.3	8.39			
02/25/2021	01:50:10	1615	4.5	8.39			
02/25/2021	01:50:40	1586	4.3	8.39			
02/25/2021	01:51:10	1649	4.4	8.39			
02/25/2021	01:51:40	1614	4.5	8.39			
02/25/2021	01:52:10	1659	4.4	8.39			
02/25/2021	01:52:40	1615	4.5	8.39			
02/25/2021	01:53:10	1703	4.5	8.39			
02/25/2021	01:53:40	1656	4.4	8.39			
02/25/2021	01:54:10	1718	4.5	8.39			
02/25/2021	01:54:40	1745	4.5	8.39			
02/25/2021	01:55:10	1716	4.3	8.39			
02/25/2021	01:55:40	1689	4.4	8.39			
02/25/2021	01:56:10	1740	4.4	8.39			
02/25/2021	01:56:40	1707	4.4	8.39			
02/25/2021	01:57:10	1790	4.4	8.39			
02/25/2021	01:57:40	1702	4.3	8.39			
02/25/2021	01:58:10	1813	4.3	8.39			
02/25/2021	01:58:40	1716	4.4	8.39			
02/25/2021	01:59:10	1789	4.3	8.39			
02/25/2021	01:59:40	1737	4.4	8.39			
02/25/2021	02:00:10	1798	0.0	8.44			
02/25/2021	02:00:40	1748	0.0	8.41			
02/25/2021	02:01:10	1831	4.4	8.39			
02/25/2021	02:02:10	1859	4.4	8.39			
02/25/2021	02:02:40	1837	4.5	8.39			
02/25/2021	02:03:10	1878	4.4	8.39			
02/25/2021	02:03:40	1863	4.5	8.39			
02/25/2021	02:04:10	1861	4.3	8.39			
02/25/2021	02:04:40	1889	4.4	8.39			
02/25/2021	02:05:10	1883	4.3	8.39			
02/25/2021	02:05:40	1893	4.4	8.38			
02/25/2021	02:06:10	1904	4.4	8.38			
02/25/2021	02:06:40	1873	4.5	8.39			
02/25/2021	02:07:10	1923	4.4	8.39			
02/25/2021	02:07:40	1749	2.8	8.38			
02/25/2021	02:08:10	1578	2.9	8.39			
02/25/2021	02:08:40	1578	2.9	8.38			
02/25/2021	02:09:10	1781	2.8	8.38			
02/25/2021	02:09:40	1748	2.9	8.38			
02/25/2021	02:10:10	1734	2.8	8.38			
02/25/2021	02:10:40	1701	2.8	8.38			
02/25/2021	02:11:10	1740	2.9	8.38			
02/25/2021	02:11:40	1680	2.8	8.38			
02/25/2021	02:12:10	1680	2.8	8.38			
02/25/2021	02:12:40	1698	2.9	8.39			
02/25/2021	02:13:10	1666	2.9	8.39			

Well Nelson 35-17HZ			Field Wattenberg		Job Start Feb/24/2021	Customer Oxy	Job Number EAJ7-01742
Date	Time 24-hr clock	Treating Pressure PSI	Flow Rate B/M	Density LB/G	Message		
02/25/2021	02:14:10	1733	2.9	8.39			
02/25/2021	02:14:40	1772	2.9	8.39			
02/25/2021	02:15:10	1728	2.9	8.39			
02/25/2021	02:15:40	1740	2.8	8.38			
02/25/2021	02:16:10	1763	2.8	8.39			
02/25/2021	02:16:40	1762	2.9	8.38			
02/25/2021	02:17:10	1794	2.8	8.38			
02/25/2021	02:17:40	1841	2.8	8.39			
02/25/2021	02:18:10	1737	2.9	8.39			
02/25/2021	02:18:40	1787	2.8	8.39			
02/25/2021	02:19:10	1884	2.8	8.38			
02/25/2021	02:19:40	1834	2.9	8.39			
02/25/2021	02:20:10	1722	2.8	8.39			
02/25/2021	02:20:40	1814	2.8	8.39			
02/25/2021	02:21:10	1882	2.9	8.39			
02/25/2021	02:21:40	1793	2.9	8.39			
02/25/2021	02:22:10	1913	2.8	8.38			
02/25/2021	02:22:40	1871	2.9	8.39			
02/25/2021	02:23:10	1804	2.9	8.38			
02/25/2021	02:23:40	1832	2.8	8.39			
02/25/2021	02:24:10	1926	2.9	8.39			
02/25/2021	02:24:40	1880	2.9	8.39			
02/25/2021	02:25:10	1785	2.8	8.39			
02/25/2021	02:25:40	1959	2.9	8.38			
02/25/2021	02:26:10	1885	2.9	8.38			
02/25/2021	02:26:40	1901	2.8	8.39			
02/25/2021	02:27:10	1883	2.8	8.39			
02/25/2021	02:27:40	1891	2.9	8.39			
02/25/2021	02:28:10	1868	2.8	8.38			
02/25/2021	02:28:40	1905	2.9	8.39			
02/25/2021	02:29:10	1973	2.8	8.38			
02/25/2021	02:29:40	2015	2.9	8.38			
02/25/2021	02:30:10	1869	2.9	8.38			
02/25/2021	02:30:40	1919	2.8	8.39			
02/25/2021	02:31:10	1907	2.9	8.38			
02/25/2021	02:31:40	1933	2.9	8.39			
02/25/2021	02:32:10	1940	2.8	8.39			
02/25/2021	02:32:40	1968	2.9	8.38			
02/25/2021	02:33:10	2060	2.9	8.38			
02/25/2021	02:33:40	2047	2.8	8.39			
02/25/2021	02:34:10	2057	2.8	8.38			
02/25/2021	02:34:40	1960	2.9	8.38			
02/25/2021	02:35:40	2043	2.8	8.38			
02/25/2021	02:36:10	2057	2.9	8.38			
02/25/2021	02:36:40	2022	2.8	8.38			
02/25/2021	02:37:10	2014	2.8	8.38			
02/25/2021	02:37:40	2091	2.9	8.38			
02/25/2021	02:38:10	1973	2.9	8.38			
02/25/2021	02:38:40	2070	2.8	8.38			
02/25/2021	02:39:10	2135	2.9	8.38			
02/25/2021	02:39:40	2041	2.9	8.38			
02/25/2021	02:40:10	1970	2.9	8.38			
02/25/2021	02:40:40	2113	2.9	8.38			
02/25/2021	02:41:10	2058	2.8	8.38			

Well Nelson 35-17HZ			Field Wattenberg		Job Start Feb/24/2021	Customer Oxy	Job Number EAJ7-01742
Date	Time 24-hr clock	Treating Pressure PSI	Flow Rate B/M	Density LB/G	Message		
02/25/2021	02:42:10	2011	2.8	8.38			
02/25/2021	02:42:40	2044	2.8	8.38			
02/25/2021	02:43:10	1884	1.7	8.38			
02/25/2021	02:43:40	1920	1.7	8.38			
02/25/2021	02:44:10	1946	1.6	8.38			
02/25/2021	02:44:40	1918	1.7	8.38			
02/25/2021	02:45:10	1895	1.8	8.38			
02/25/2021	02:45:40	1892	1.6	8.38			
02/25/2021	02:46:10	1938	1.6	8.38			
02/25/2021	02:46:40	1841	1.8	8.38			
02/25/2021	02:47:10	2505	1.6	8.38			
02/25/2021	02:47:40	2014	1.7	8.38			
02/25/2021	02:48:10	1931	1.8	8.38			
02/25/2021	02:48:40	1950	1.6	8.38			
02/25/2021	02:49:10	1921	1.7	8.38			
02/25/2021	02:49:40	1935	1.7	8.38			
02/25/2021	02:50:10	2314	1.7	8.38			
02/25/2021	02:50:27	2752	1.6	8.38	Bump Top Plug		
02/25/2021	02:50:29	2895	1.6	8.38	End Displacement		
02/25/2021	02:50:31	2837	1.6	8.38	Begin Casing Test		
02/25/2021	02:50:40	2997	0.0	8.38			
02/25/2021	02:51:10	2917	0.0	8.38			
02/25/2021	02:51:40	2967	0.0	8.38			
02/25/2021	02:52:10	2935	0.0	8.38			
02/25/2021	02:52:40	2971	0.0	8.38			
02/25/2021	02:53:10	2954	0.0	8.38			
02/25/2021	02:53:40	2977	0.0	8.38			
02/25/2021	02:54:10	2975	0.0	8.38			
02/25/2021	02:54:40	2987	0.0	8.38			
02/25/2021	02:55:10	2992	0.0	8.38			
02/25/2021	02:55:40	3006	0.0	8.38			
02/25/2021	02:56:10	3010	0.0	8.38			
02/25/2021	02:56:40	3019	0.0	8.38			
02/25/2021	02:57:10	3025	0.0	8.38			
02/25/2021	02:57:40	3032	0.0	8.38			
02/25/2021	02:58:10	3040	0.0	8.38			
02/25/2021	02:58:40	3047	0.0	8.38			
02/25/2021	02:59:10	3054	0.0	8.38			
02/25/2021	02:59:40	3060	0.0	8.38			
02/25/2021	03:00:10	3067	0.0	8.38			
02/25/2021	03:00:40	3075	0.0	8.38			
02/25/2021	03:01:10	3082	0.0	8.38			
02/25/2021	03:01:40	3088	0.0	8.38			
02/25/2021	03:02:10	3097	0.0	8.38			
02/25/2021	03:02:40	3100	0.0	8.38			
02/25/2021	03:03:10	3107	0.0	8.39			
02/25/2021	03:03:40	3114	0.0	8.39			
02/25/2021	03:04:10	3121	0.0	8.38			
02/25/2021	03:04:40	3128	0.0	8.39			
02/25/2021	03:05:10	3135	0.0	8.39			
02/25/2021	03:05:40	3139	0.0	8.39			
02/25/2021	03:05:49	3141	0.0	8.39	End Casing Test		
02/25/2021	03:06:10	2995	0.0	8.38			
02/25/2021	03:06:40	1888	0.0	8.39			

Well			Field		Job Start		Customer		Job Number	
Nelson 35-17HZ			Wattenberg		Feb/24/2021		Oxy		EAJ7-01742	
Date	Time 24-hr clock	Treating Pressure PSI		Flow Rate B/M		Density LB/G		Message		
02/25/2021	03:07:33	17		0.0		8.39		Floats Hold; 4BBLs Back		
02/25/2021	03:07:40	18		0.0		8.39				
02/25/2021	03:07:50	16		0.0		8.39		10 BBL Spacer to Surface		

Post Job Summary

Average Pump Rates, bbl/min					Volume of Fluid Injected, bbl				
Slurry 3.8	N2	Mud	Maximum Rate 6.6		Total Slurry 0.0	Mud 0.0	Spacer 0.0	N2	
Treating Pressure Summary, psi					Breakdown Fluid				
Maximum 5233	Final 17	Average 863	Bump Plug to	Breakdown	Type		Volume bbl	Density lb/gal	
Avg. N2 Percent %		Designed Slurry Volume 0.0 bbl		Displacement 0.0 bbl		Mix Water Temp degF		Cement Circulated to Surface? <input type="checkbox"/>	Volume bbl
								Washed Thru Perfs <input type="checkbox"/>	To ft
Customer or Authorized Representative Jeremie Wilde				Schlumberger Supervisor Tyler Devillier				Circulation Lost <input type="checkbox"/>	Job Completed <input checked="" type="checkbox"/>
								-	