



39.78334, -108.64392, 6215.7ft, 295°  
05/17/2021 09:35:03 AM



**COLORADO**  
Oil & Gas Conservation  
Commission  
Department of Natural Resources

**Photo 1. Location.**

**Continental 3-17**

**API: 05-103-08106**

**Inspection: 701500798**





39.78323, -108.64422, 6216.7ft, 26°  
05/17/2021 09:38:11 AM



**COLORADO**  
Oil & Gas Conservation  
Commission  
Department of Natural Resources

**Photo 2. Well.**

**Continental 3-17**

**API: 05-103-08106**

**Inspection: 701500798**





39.78326, -108.64425, 6219.4ft, 351°  
05/17/2021 09:41:33 AM

EMPACT ANALYTICAL SYSTEMS INC.  
 365 SOUTH MAIN  
 BRIGHTON CO. 80601  
 303-637-0150 www.empactanalytical.com

Meter S/N  
 202A-235787  
 6-61283/01

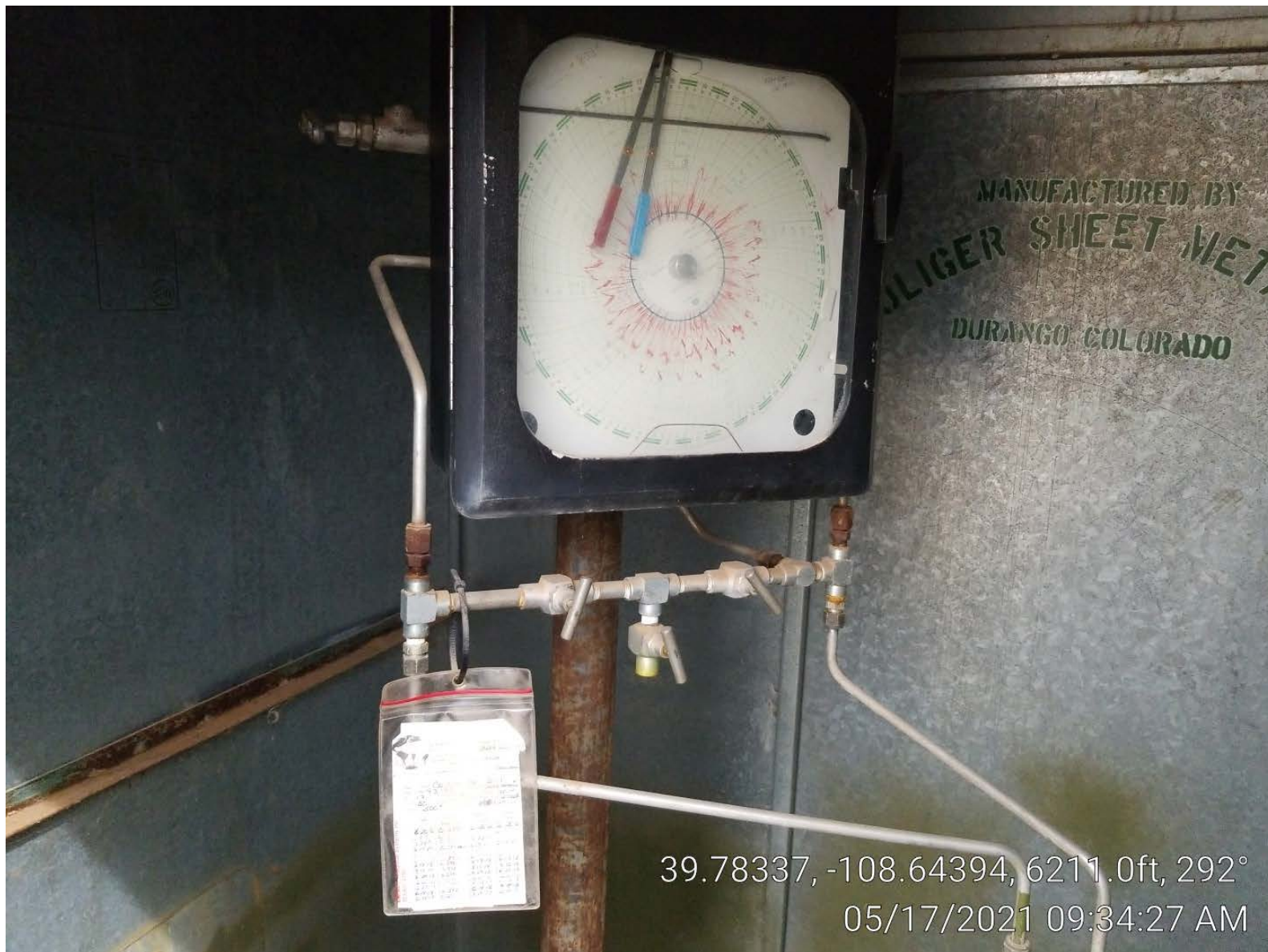
Station Name Continental 3-17  
 Station No. 93195 Producer East Arrow  
 Sec 17 Township 33 Range 100W  
 Diff 50" Temp Range 150° Tube Size 2.068  
 Static 500' Absolute 11.4

Date	Orifice Plate Size	Meter Test Date	Sample Date
6.20.6	0.375	6.20.6	6.20.6
2.7.8	0.375	2.7.8	2.7.8
4.22.9	0.375	4.22.9	
6.15.10	0.375 New	6.15.10	6.15.10
5.27.11	0.375	5.27.11	5.27.11
6.29.12	0.375	6.29.12	6.29.12
6.13.13	0.375	6.13.13	6.13.13
8.12.14	0.375	8.12.14	8.12.14
6.29.15	0.375	6.29.15	6.29.15
6.21.16	0.375	6.21.16	6.21.16
6.27.17	0.375	6.27.17	6.27.17
6.14.18	0.375	6.14.18	6.14.18
6.14.19	0.250	6.14.19	6.14.19

39.78333, -108.64393, 6223.4ft, 305°  
 05/17/2021 09:39:47 AM







39.78337, -108.64394, 6211.0ft, 292°  
05/17/2021 09:34:27 AM