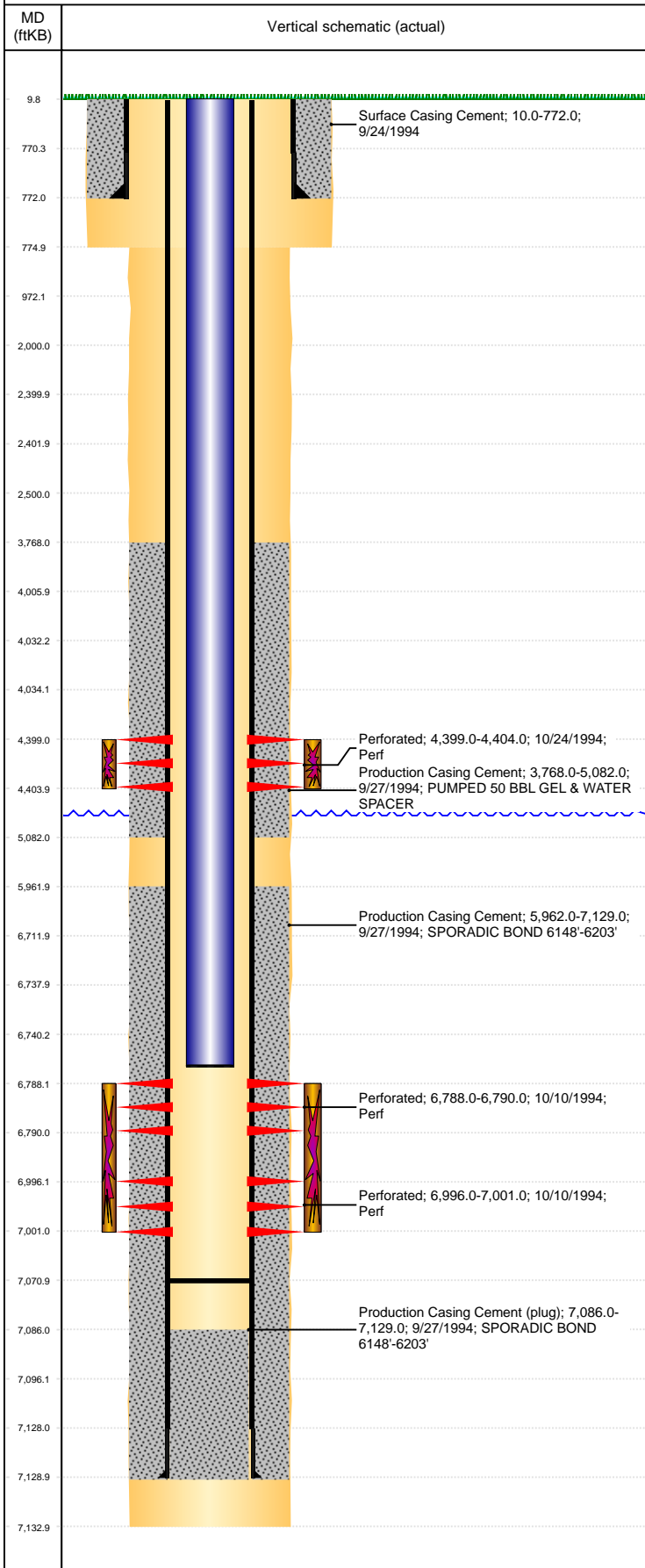


**Well Name: LDS A 5-8**

VERTICAL, ORIGINAL HOLE, 5/19/2021 10:44:20 AM



Well Header												
API 05-123-18412		Business Unit DJ BASIN			District 15		Well Config VERTICAL					
KB - GL / MSL (ft... 10.00		Spud Date 9/23/1994		P & A Date		Well Production Status SI			SoRT No			
Comment WELLHEAD IS 5000# WP, 3000# BACKSIDE VALVE RATING												
Surface Location (Congressional)												
Qtr 3 SW	Qtr 4 NW	Section 8	Twnshp 3	Twنش... N	Range 64	Rng E/... W	Actual Latitude (°) 40.24156000		Actual Longitude (°) -104.58230000			
Wellbore Sections												
Section Des			Size (in)			Act Top, MD (ftKB)		Act Btm, MD (ftKB)				
SURFACE			12 1/4			10		775				
PRODUCTION			7 7/8			775		7,133				
Casing Strings												
Csg Des			Run Date		OD (in)	Wt/Len (lb/ft)	Grade	Top, MD (ftKB)	MD (ftKB)			
Surface			9/24/1994		8 5/8	24.00		10.0	772.0			
Production			9/27/1994		4 1/2	11.60	I-70	10.0	7,129.0			
Cement												
Des					Start Date		Top (ftKB)		Btm (ftKB)			
Surface Casing Cement					9/24/1994		10.0		772.0			
Production Casing Cement					9/27/1994		3,768.0		5,082.0			
Production Casing Cement					9/27/1994		5,962.0		7,129.0			
Zone Statuses												
Zone Name		Status Date	Status	Fluid Type	Job				Prod Method			
SUSSEX		3/10/2014	PR	Water	DRILLING/COMPLETION - ORIGINAL, 9/23/1994...				Flowing			
SUSSEX		11/22/2016	SI									
NIOBRARA		3/10/2014	PR	Water							Flowing	
NIOBRARA		11/22/2016	SI									
CODELL		11/3/1994	PR									
CODELL		3/10/2014	PR	Water					Flowing			
Perforation Data												
Linked Zone			Bnch/Stg	Entered Shot Total	Top (ftKB)		Btm (ftKB)		Date			
SUSSEX, ORIGINAL HOLE			B	12	4,399.00		4,404.00		10/24/1994			
NIOBRARA, ORIGINAL HOLE				6	6,788.00		6,790.00		10/10/1994			
CODELL, ORIGINAL HOLE				12	6,996.00		7,001.00		10/10/1994			
Stimulation Intervals												
Zone				Start Date		Top (ftKB)		Btm (ftKB)				
SUSSEX, ORIGINAL HOLE				10/25/1994		4,399.0		4,404.0				
NIOBRARA-CODELL, ORIGINAL HOLE				10/12/1994		6,788.0		7,001.0				
NIOBRARA-CODELL, ORIGINAL HOLE				10/19/1994		6,788.0		7,001.0				
Other In Hole												
Run Date		Des			Make		OD (in)	Top (ftKB)	Btm (ftKB)			
Logs												
Date		Type					Top, MD (ftKB)		Btm, MD (ftKB)			
9/27/1994		COMPENSATED DENSITY					4,200.0		7,131.0			
9/27/1994		INDUCTION					772.0		7,131.0			
10/10/1994		CEMENT BOND					3,540.0		7,080.0			
Plug Back Total Depths												
Date		Type		Com					Depth (ftKB)			
10/10/1994		FILL		DEPTH LOGGER ON CBL					7,086.0			
10/18/1994		FILL		CLEAN OUT					7,071.0			