

HALLIBURTON

iCem[®] Service

MALLARD EXPLORATION LLC

For: Hans Cary & Todd Stephens

Date: Wednesday, February 24, 2021

GOLDENEYE FED 21-16-3HN

SURFACE CASING

Sincerely,

Brad Hinkle and Crew

2.0 Real-Time Job Summary

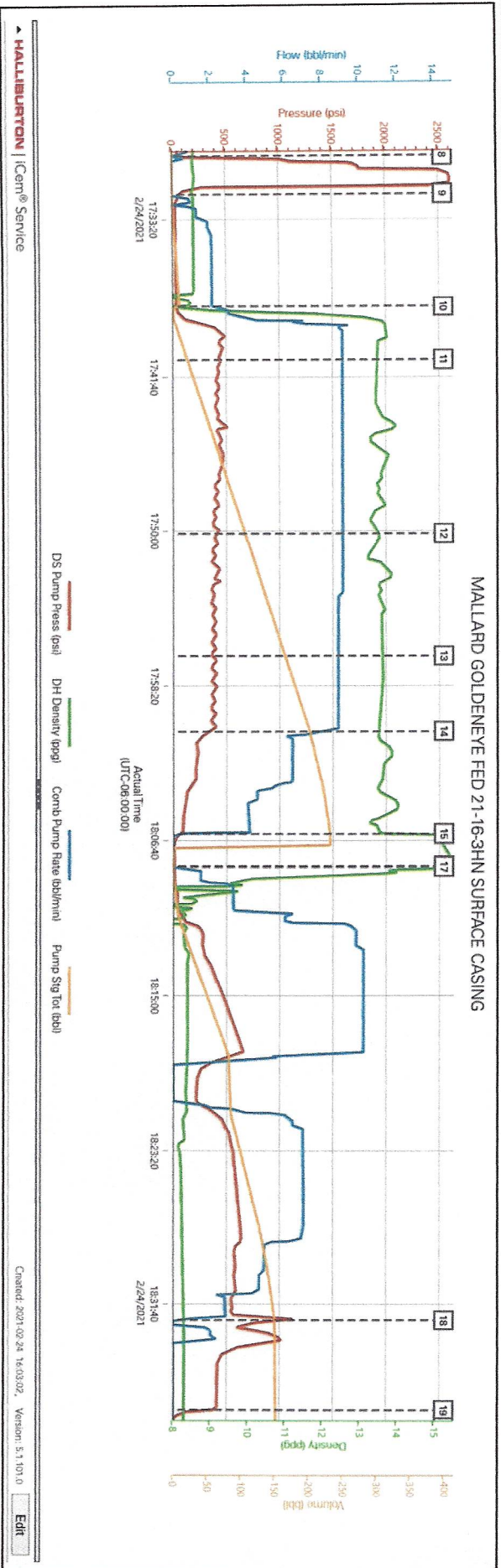
2.1 Job Event Log

Event	Type	Seq. No.	Activity	Graph Label	Date	Time	Source	DS Pump Press (psi)	DH Density (ppg)	Comb Pump Rate (bbl/min)	Pump Stg Tot (bbl)	Comments
Event 1			Check Floats	Call Out	2/24/2021	09:00:00	USER					Crew called for an on location of 1500. Crew was Brad Hinkle, Mitchell Camper and Cody Stalcar.
Event 2			Depart Shop for Location	Depart Shop for Location	2/24/2021	12:00:00	USER					Pre-journey safety meeting. Discussed daytime traffic and changes in weather with snow in the forecast.
Event 3			Arrive at Location from Service Center	Arrive at Location from Service Center	2/24/2021	14:00:00	USER					Arrive at location and perform a site assessment. Rig was almost done tripping drill pipe to run casing.
Event 4			Pre-Rig Up Safety Meeting	Pre-Rig Up Safety Meeting	2/24/2021	14:15:00	USER					Pre-rig up safety meeting. Begin spotting trucks and rigging up iron.
Event 5			Standby Other	Job Numbers	2/24/2021	16:10:08	USER	2.00	0.07	0.00	0.00	TD: 1955 TP: 1941 FC: 1899 -9.625" 36# casing inside at 13.5" OH.
Event 6			Pre-Job Safety Meeting	Pre-Job Safety Meeting	2/24/2021	16:14:59	USER	2.00	0.07	0.00	0.00	Pre-job safety meeting with all personnel on location.
Event 7			Start Job	Start Job	2/24/2021	17:27:32	COM8	8.00	8.41	0.00	0.00	Fill lines with 2 bbls of fresh water.
Event 8			Test Lines	Test Lines	2/24/2021	17:29:58	COM8	61.00	8.57	0.00	0.60	Pressure test lines to 2500 psi with a 500 psi electronic kick-out test.
Event 9			Pump Spacer 1	Pump Spacer 1	2/24/2021	17:32:00	COM8	65.00	8.56	0.00	0.00	Pump 10 bbl red dye water spacer.

Event	10	Pump Lead Cement	Pump Lead Cement	2/24/2021	17:37:50	COM8	32.00	7.83	2.10	10.50	Pump 209 bbl (675 sacks, 1.74 yield, 9.17 gal/sk) SwiftCem mixed at 13.5 ppg. Density verified by pressurized scales.
Event	11	Check Weight	Check Weight	2/24/2021	17:40:45	COM8	447.00	13.48	9.10	21.60	Cement weighed at 13.5 ppg.
Event	12	Check Weight	Check Weight	2/24/2021	17:50:10	COM8	402.00	13.52	9.10	107.00	Cement weighed at 13.5 ppg.
Event	13	Check Weight	Check Weight	2/24/2021	17:56:44	COM8	368.00	13.60	8.90	165.80	
Event	14	Other	Other	2/24/2021	18:00:48	COM8	322.00	13.53	8.20	201.70	
Event	15	Shutdown	Shutdown	2/24/2021	18:06:20	COM8	67.00	14.00	0.00	231.30	
Event	16	Drop Top Plug	Drop Top Plug	2/24/2021	18:08:01	COM8	4.00	15.45	0.00	0.00	Top plug preloaded. Witnessed by customer.
Event	17	Pump Displacement	Pump Displacement	2/24/2021	18:08:03	COM8	4.00	15.45	0.00	0.00	Pump 147 bbl fresh water. Good returns throughout. 50 bbl cement to surface.
Event	18	Bump Plug	Bump Plug	2/24/2021	18:32:34	COM8	1019.00	8.29	0.00	149.90	Bump plug at 557 psi and increase to 1200 psi. Pressure fell off. Attempted to seat plug and pressure fell off and stayed level at 400 psi. After some investigation, water was spewing out of the wellhead causing pressure to bleed back.
Event	19	Check Floats	Check Floats	2/24/2021	18:37:21	USER	329.00	8.30	0.00	151.40	Floats held .5 bbl back.
Event	20	End Job	End Job	2/24/2021	18:38:16	COM8	-7.00	8.28	0.00	0.00	Thank you for using Halliburton Cementing.
Event	21	Pre-Rig Down Safety Meeting	Pre-Rig Down Safety Meeting	2/24/2021	18:45:00	USER	226.00	8.31	9.80	7.40	Pre-rig down safety meeting. Discussed where to lay iron while the rig moved to the next well.

3.0 Attachments

3.1 MALLARD GOLDENEYE FED 21-16-3HN.png



Cementing Job Summary

The Road to Excellence Starts with Safety

Sold To #: 380921	Ship To #: 9049197	Quote #:	Sales Order #: 0906991026
Customer: MALLARD EXPLORATION LLC-EBUS		Customer Rep: Todd Stephens & Hans Cary	
Well Name: GOLDENEYE FED	Well #: 21-16-3HN	API/UWI #: 05-123-50841-00	
Field: WILDCAT	City (SAP): BRIGGS DALE	County/Parish: WELD	State: COLORADO
Legal Description: SE NW-21-8N-60W-2365FNL-2196FWL			
Contractor: CYCLONE		Rig/Platform Name/Num: CYCLONE 37	
Job BOM: 7521 7521			
Well Type: HORIZONTAL OIL			
Sales Person: HALAMERICA\HB41307		Srcv Supervisor: Bradley Hinkle	
Job			

Formation Name			
Formation Depth (MD)	Top		Bottom
Form Type	BHST		
Job depth MD	1941ft	Job Depth TVD	1941ft
Water Depth	Wk Ht Above Floor		
Perforation Depth (MD)	From		To

Well Data

Description	New / Used	Size in	ID in	Weight lbm/ft	Thread	Grade	Top MD ft	Bottom MD ft	Top TVD ft	Bottom TVD ft
Casing		9.625	8.921	36			0	1941		1941
Open Hole Section			13.5				0	1955		1955

Tools and Accessories

Type	Size in	Qty	Make	Depth ft	Type	Size in	Qty	Make
Guide Shoe	9.625				Top Plug	9.625	1	HES
Float Shoe	9.625			1941	Bottom Plug	9.625		HES
Float Collar	9.625			1955	SSR plug set	9.625		HES
Insert Float	9.625				Plug Container	9.625		HES
Stage Tool	9.625				Centralizers	9.625		HES

Fluid Data

Stage/Plug #: 1

Fluid #	Stage Type	Fluid Name	Qty	Qty UoM	Mixing Density lbm/gal	Yield ft ³ /sack	Mix Fluid Gal	Rate bbl/min	Total Mix Fluid Gal
1	Spacer	Water with Red Dye	10	bbl	8.34			3	

Fluid #	Stage Type	Fluid Name	Qty	Qty UoM	Mixing Density lbm/gal	Yield ft ³ /sack	Mix Fluid Gal	Rate bbl/min	Total Mix Fluid Gal
2	Cement	SwiftCem	675	sack	13.5	1.74		8	9.17
9.17 Gal		FRESH WATER							

Cementing Job Summary

Fluid #	Stage Type	Fluid Name	Qty	Qty UoM	Mixing Density lbm/gal	Yield ft ³ /sack	Mix Fluid Gal	Rate bbl/mi n	Total Mix Fluid Gal
3	Displacement	Fresh Water	147	bbl	8.34			8	
Cement Left In Pipe		Amount	42 ft		Reason			Shoe Joint	
Mix Water:		pH 7	Mix Water Chloride:		0 ppm		Mix Water Temperature: 80 °F		
Cement Temperature:		## °F °C	Plug Displaced by:		## lb/gal kg/m ³ XXXX		Disp. Temperature: ## °F °C		
Plug Bumped?		Yes	Bump Pressure:		567 psi		Floats Held? Yes		
Cement Returns:		50 bbl	Returns Density:		## lb/gal kg/m ³		Returns Temperature: ## °F °C		
Comment 50 bbls cement to surface									