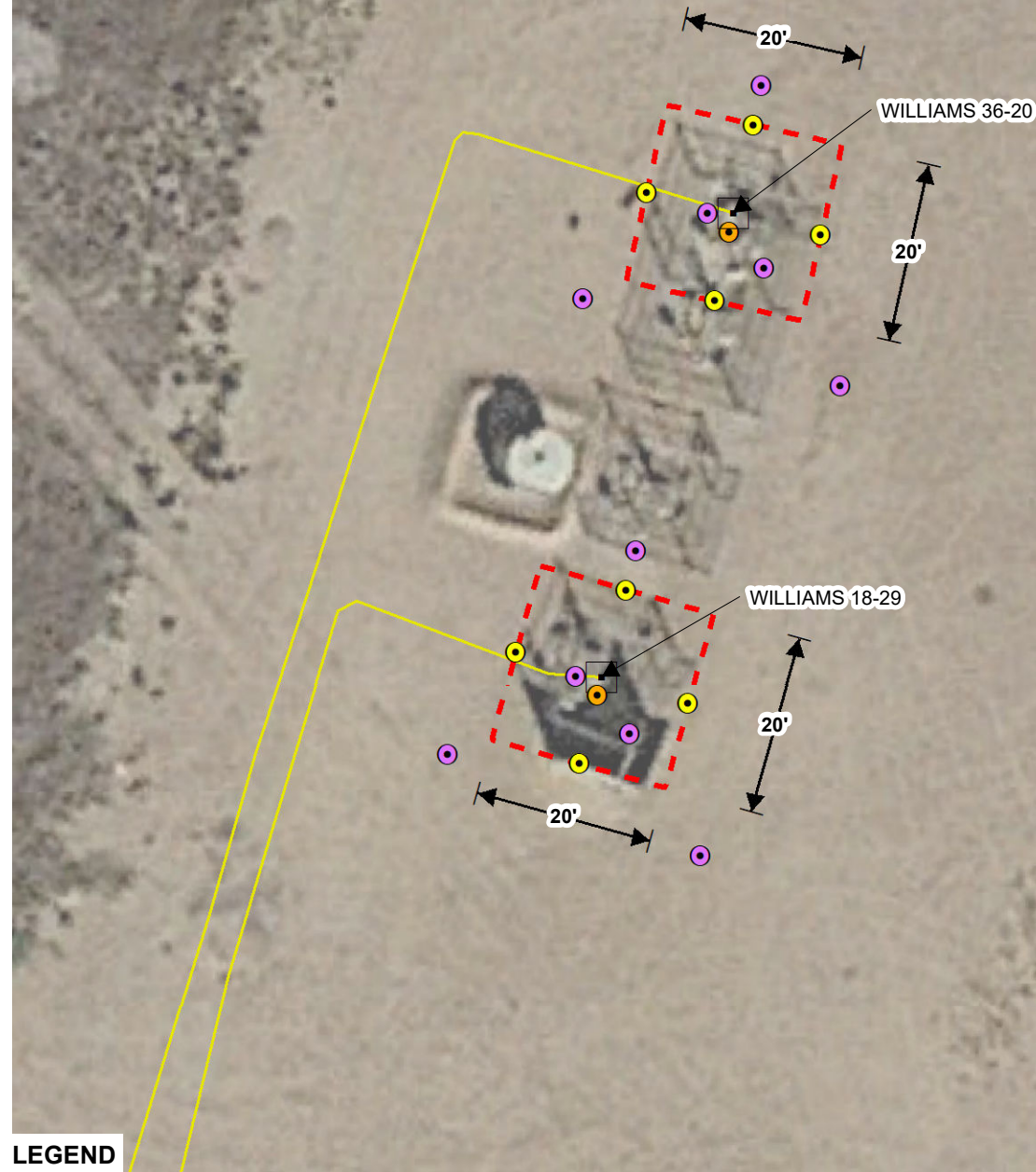


RANGELAND



LEGEND







-  PROPOSED SOIL SAMPLE
-  PROPOSED SOIL SCREENING LOCATION
-  PROPOSED SHALLOW SOIL VAPOR POINT
-  WELLHEAD
-  APPROXIMATE FLOWLINE LOCATION
-  PROPOSED EXCAVATION EXTENT

IMAGE COURTESY OF GOOGLE EARTH 2020

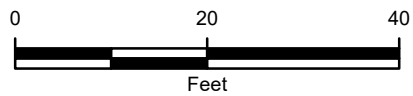


FIGURE 2
PROPOSED WELLHEAD EXCAVATION
AND SOIL SAMPLING LOCATIONS MAP
WILLIAMS 18-29, 36-20 WELLHEADS
NENW SEC 29-T2N-R68W
WELD COUNTY, COLORADO
KERR-MCGEE OIL & GAS ONSHORE, LP

