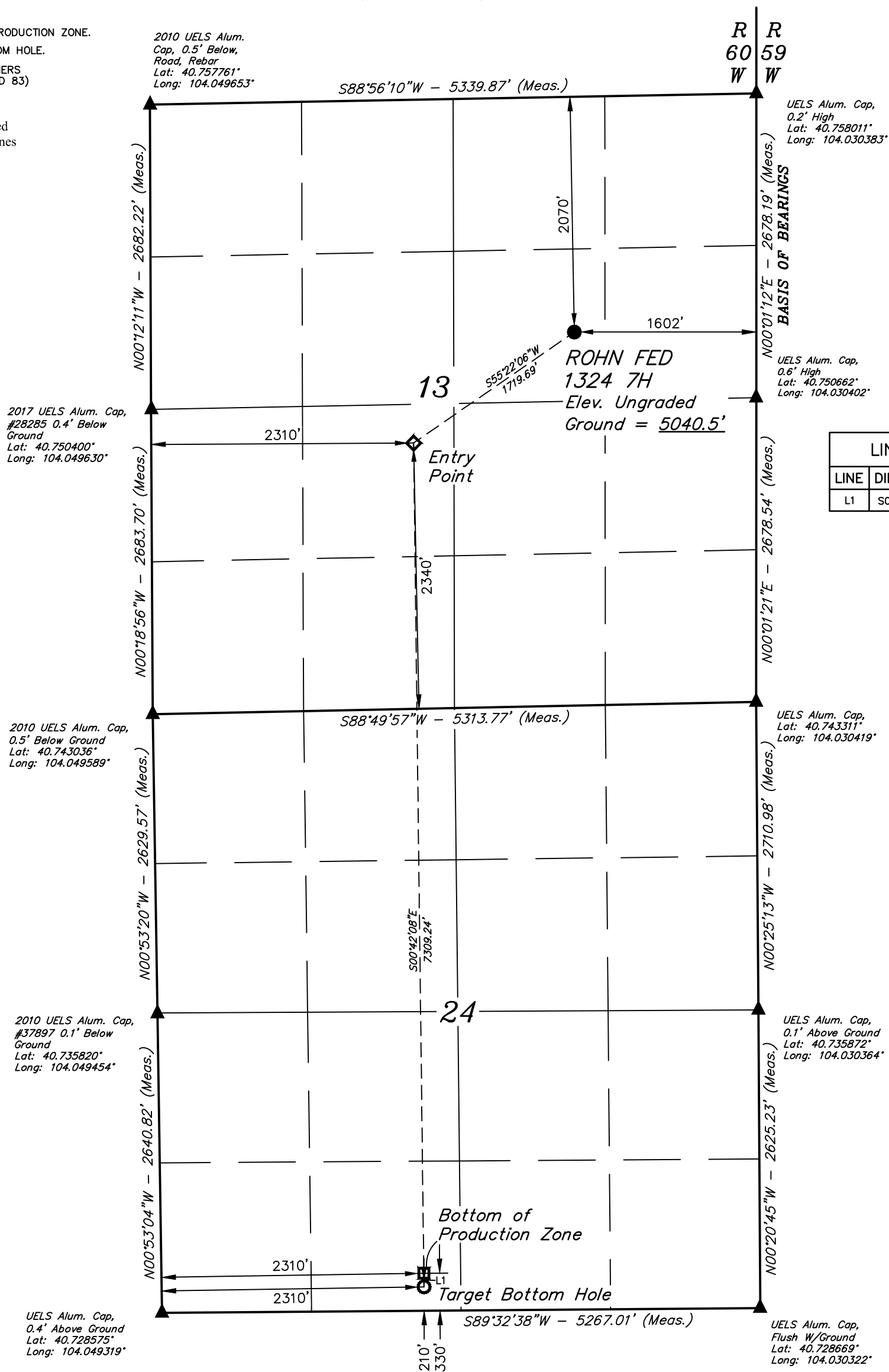


*T9N, R60W, 6th P.M.*

- NOTE:**  
Distances referenced  
on plat to section lines  
are perpendicular.



LINE TABLE		
LINE	DIRECTION	LENGTH
L1	S00°53'04"E	120.00'

<b>NAD 83 (SURFACE LOCATION)</b>	<b>NAD 83 (ENTRY POINT)</b>
LATITUDE = 40°45'08.11" (40.752254°)	LATITUDE = 40°44'58.48" (40.749578°)
LONGITUDE = 104°02'10.25" (104.036179°)	LONGITUDE = 104°02'28.64" (104.041290°)
<b>NAD 27 (SURFACE LOCATION)</b>	<b>NAD 27 (ENTRY POINT)</b>
LATITUDE = 40°45'08.16" (40.752267°)	LATITUDE = 40°44'58.53" (40.749591°)
LONGITUDE = 104°02'08.43" (104.035676°)	LONGITUDE = 104°02'26.83" (104.040786°)
<b>STATE PLANE NAD 83 (CO. NORTH)</b>	<b>STATE PLANE NAD 83 (CO. NORTH)</b>
N: 1520238.69' E: 3405552.36'	N: 1519240.44' E: 3404152.58'
<b>STATE PLANE NAD 27 (CO. NORTH)</b>	<b>STATE PLANE NAD 27 (CO. NORTH)</b>
N: 520236.67' E: 2405702.65'	N: 519238.45' E: 2404302.83'
<b>NAD 83 (BOTTOM OF PRODUCTION ZONE)</b>	<b>NAD 83 (TARGET BOTTOM HOLE)</b>
LATITUDE = 40°43'46.28" (40.729522°)	LATITUDE = 40°43'45.09" (40.729193°)
LONGITUDE = 104°02'27.61" (104.041004°)	LONGITUDE = 104°02'27.59" (104.040998°)
<b>NAD 27 (BOTTOM OF PRODUCTION ZONE)</b>	<b>NAD 27 (TARGET BOTTOM HOLE)</b>
LATITUDE = 40°43'46.33" (40.729535°)	LATITUDE = 40°43'45.14" (40.729206°)
LONGITUDE = 104°02'25.80" (104.040500°)	LONGITUDE = 104°02'25.78" (104.040494°)
<b>STATE PLANE NAD 83 (CO. NORTH)</b>	<b>STATE PLANE NAD 83 (CO. NORTH)</b>
N: 1511935.73' E: 3404352.15'	N: 1511815.81' E: 3404355.81'
<b>STATE PLANE NAD 27 (CO. NORTH)</b>	<b>STATE PLANE NAD 27 (CO. NORTH)</b>
N: 511933.87' E: 2404502.52'	N: 511813.95' E: 2404506.18'

CERTIFICATE

THIS IS TO CERTIFY THAT THE ABOVE MAP WAS PREPARED FROM FIELD NOTES OF ACTUAL SURVEYS MADE BY ME OR UNDER MY SUPERVISION, AND THAT THE SAME ARE TRUE AND CORRECT TO THE BEST OF MY KNOWLEDGE AND BELIEF.

REGISTERED LAND SURVEYOR  
REGISTRATION NO. 28285  
STATE OF COLORADO

REV: 5 04-22-21 Z.L. (BPZ &amp; BHL CHANGE)

**VERDAD RESOURCES LLC**

**ROHN FED 1324 7H**  
**SW 1/4 NE 1/4, SECTION 13, T9N, R60W, 6th P.M.**  
**WELD COUNTY, COLORADO**

<b>SURVEYED BY</b>	GREG WEIMER	01-16-20	<b>SCALE</b>
<b>DRAWN BY</b>	D.J.W.	01-04-18	1" = 1000'

## WELL LOCATION PLAT

## BASIS OF ELEVATION

SPOT ELEVATION LOCATED AT THE NORTHEAST CORNER OF SECTION 2, T9N, R61W, 6th P.M., TAKEN FROM THE GROVER SOUTH, QUADRANGLE, COLORADO, WELD COUNTY, 7.5 MINUTE QUAD (TOPOGRAPHICAL MAP) PUBLISHED BY THE UNITED STATES DEPARTMENT OF THE INTERIOR, GEOLOGICAL SURVEY. SAID ELEVATION IS MARKED AS BEING 5043 FEET.



**UELS, LLC**  
Corporate Office \* 85 South 200 East  
Vernal, UT 84078 \* (435) 789-1017

