

VERDAD RESOURCES

WATTENBERG FIELD

9N-60W-13 ROHN FED 1324 PAD

ROHN FED 1324-2H

Wellbore #1

Plan: Design #3

Standard Planning Report

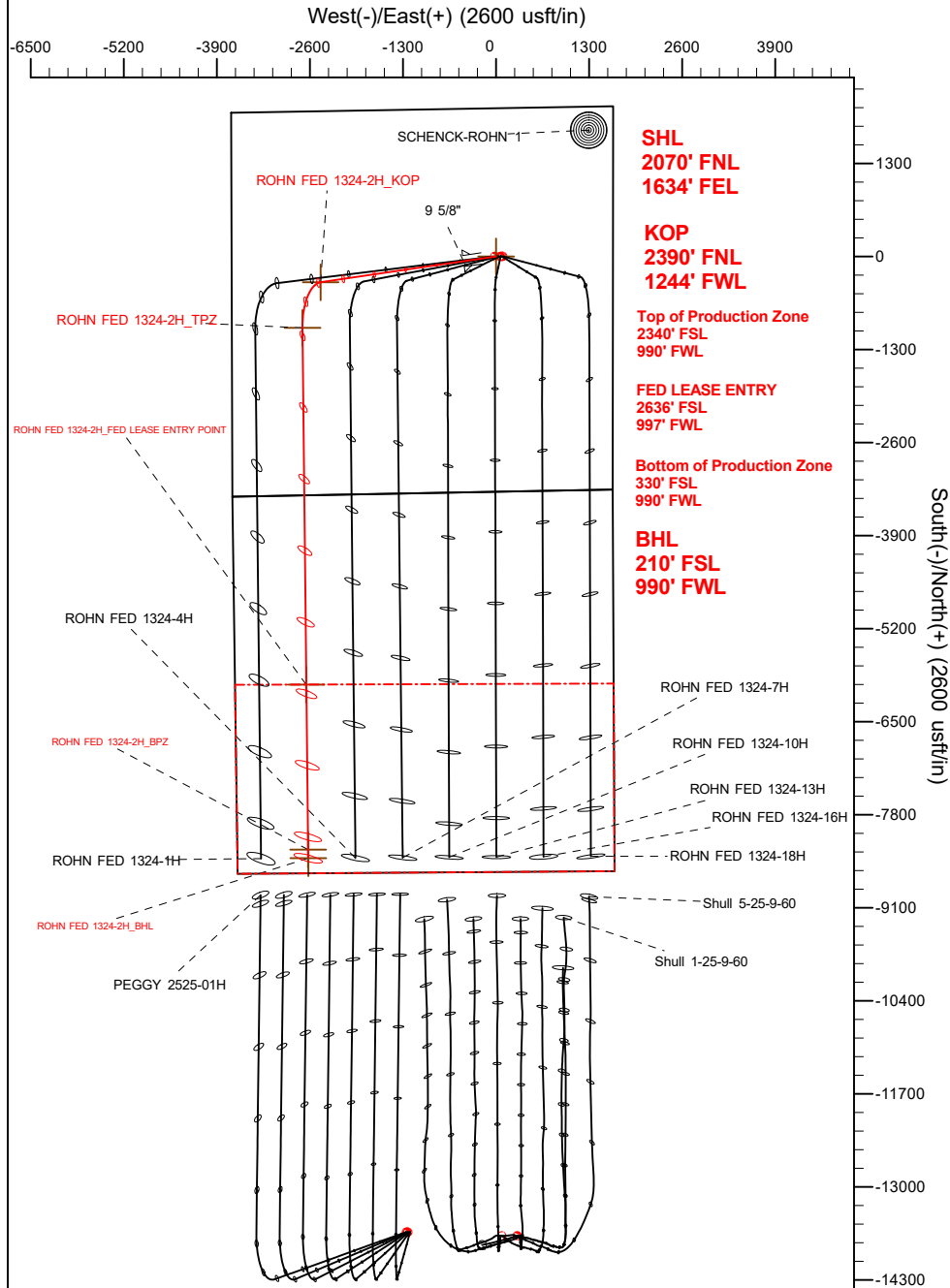
10 May, 2021

Project: WATTENBERG FIELD
Site: 9N-60W-13 ROHN FED 1324 PAD
Well: ROHN FED 1324-2H
Wellbore: Wellbore #1
Design: Design #3

VERDAD RESOURCES

CASING DETAILS

TVD	MD	Name	Size
1704.00	1770.58	9 5/8"	9-5/8

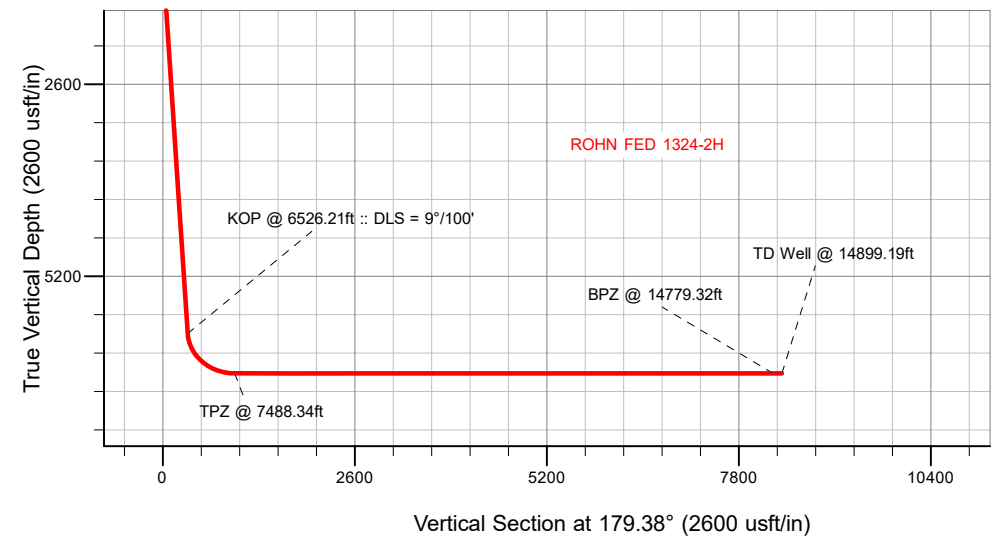


SECTION DETAILS

Sec	MD	Inc	Azi	TVD	+N/-S	+E/-W	Dleg	TFace	V Sect	Target
1	0.00	0.00	0.00	0.00	0.00	0.00	0.00	0.00	0.00	
2	250.00	0.00	0.00	250.00	0.00	0.00	0.00	0.00	0.00	
3	1553.00	26.06	261.60	1508.54	-42.55	-288.13	2.00	261.60	39.43	
4	6526.21	26.06	261.60	5976.14	-361.71	-2449.48	0.00	0.00	335.18	
5	7488.34	90.00	179.38	6515.00	-1000.00	-2703.64	9.00	-83.01	970.69	
6	14899.19	90.00	179.38	6515.00	-8410.41	-2623.02	0.00	0.00	8381.53	ROHN FED 1324-2H_BHL

WELLBORE TARGET DETAILS (LAT/LONG)

Name	TVD	MD	+N/-S	+E/-W	Latitude	Longitude
ROHN FED 1324-2H_SHL	0.00	0.00	0.00	0.00	40.752254	-104.036295
ROHN FED 1324-2H_KOP	5976.14	6526.21	-361.71	-2449.48	40.751261	-104.045136
ROHN FED 1324-2H_TPZ	6515.00	7488.34	-1000.00	-2703.64	40.749509	-104.046053
ROHN FED 1324-2H_FED LEASE ENTRY POINT	6515.00	12472.26	-5983.63	-2649.65	40.735830	-104.045856
ROHN FED 1324-2H_BPZ	6515.00	14779.32	-8290.55	-2624.67	40.729498	-104.045765
ROHN FED 1324-2H_BHL	6515.00	14899.19	-8410.41	-2623.02	40.729169	-104.045759



Azimuths to True North
Magnetic North: 7.50°
Magnetic Field
Strength: 52220.7nT
Dip Angle: 67.04°
Date: 5/4/2021
Model: IGRF202013

WELL DETAILS: ROHN FED 1324-2H

GL = 5043'

RKB = 16' @ 5059.00usft (RIG)

Plan: Design #3 (ROHN FED 1324-2H/Wellbore #1)

SherrylEnergy.com Date: 05/10/2021

VERDAD RESOURCES

Planning Report

Database:	EDM 5000.16 Single User Db	Local Co-ordinate Reference:	Well ROHN FED 1324-2H
Company:	VERDAD RESOURCES	TVD Reference:	RKB = 16' @ 5059.00usft (RIG)
Project:	WATTENBERG FIELD	MD Reference:	RKB = 16' @ 5059.00usft (RIG)
Site:	9N-60W-13 ROHN FED 1324 PAD	North Reference:	True
Well:	ROHN FED 1324-2H	Survey Calculation Method:	Minimum Curvature
Wellbore:	Wellbore #1		
Design:	Design #3		

Project	WATTENBERG FIELD		
Map System:	US State Plane 1983	System Datum:	Mean Sea Level
Geo Datum:	North American Datum 1983		
Map Zone:	Colorado Northern Zone		

Site		9N-60W-13 ROHN FED 1324 PAD				
Site Position:		Northing:	1,520,237.85	usft	Latitude:	40.752254
From:	Lat/Long	Easting:	3,405,504.51	usft	Longitude:	-104.036352
Position Uncertainty:		0.00	usft	Slot Radius:	13-3/16	"

Well		ROHN FED 1324-2H				
Well Position	+N/-S	0.00 usft	Northing:	1,520,238.09 usft	Latitude:	40.752254
	+E/-W	0.00 usft	Easting:	3,405,520.30 usft	Longitude:	-104.036295
Position Uncertainty		3.28 usft	Wellhead Elevation:	usft	Ground Level:	5,043.00 usft
Grid Convergence:		0.95 °				

Wellbore	Wellbore #1				
Magnetics	Model Name	Sample Date	Declination (°)	Dip Angle (°)	Field Strength (nT)
	IGRF202013	5/4/2021	7.50	67.04	52,220.68854792

Design	Design #3				
Audit Notes:					
Version:		Phase:	PLAN	Tie On Depth:	0.00
Vertical Section:	Depth From (TVD) (usft)	+N/-S (usft)	+E/-W (usft)	Direction (°)	
	0.00	0.00	0.00	179.38	

Plan Survey Tool Program		Date	5/10/2021		
Depth From (usft)	Depth To (usft)	Survey (Wellbore)	Tool Name	Remarks	
1	0.00	1,704.00	Design #3 (Wellbore #1)	ISCWSA MWD	
				Fixed:v2:standard declination	
2	1,704.00	14,899.19	Design #3 (Wellbore #1)	ISCWSA MWD	
				Fixed:v2:standard declination	

VERDAD RESOURCES

Planning Report

Database:	EDM 5000.16 Single User Db	Local Co-ordinate Reference:	Well ROHN FED 1324-2H
Company:	VERDAD RESOURCES	TVD Reference:	RKB = 16' @ 5059.00usft (RIG)
Project:	WATTENBERG FIELD	MD Reference:	RKB = 16' @ 5059.00usft (RIG)
Site:	9N-60W-13 ROHN FED 1324 PAD	North Reference:	True
Well:	ROHN FED 1324-2H	Survey Calculation Method:	Minimum Curvature
Wellbore:	Wellbore #1		
Design:	Design #3		

Plan Sections										
Measured Depth (usft)	Inclination (°)	Azimuth (°)	Vertical Depth (usft)	+N/-S (usft)	+E/-W (usft)	Dogleg Rate (°/100usft)	Build Rate (°/100usft)	Turn Rate (°/100usft)	TFO (°)	Target
0.00	0.00	0.00	0.00	0.00	0.00	0.00	0.00	0.00	0.00	
250.00	0.00	0.00	250.00	0.00	0.00	0.00	0.00	0.00	0.00	
1,553.00	26.06	261.60	1,508.54	-42.55	-288.13	2.00	2.00	0.00	261.60	
6,526.21	26.06	261.60	5,976.14	-361.71	-2,449.48	0.00	0.00	0.00	0.00	
7,488.34	90.00	179.38	6,515.00	-1,000.00	-2,703.64	9.00	6.65	-8.55	-83.01	
14,899.19	90.00	179.38	6,515.00	-8,410.41	-2,623.02	0.00	0.00	0.00	0.00	ROHN FED 1324-2H_

VERDAD RESOURCES

Planning Report

Database:	EDM 5000.16 Single User Db	Local Co-ordinate Reference:	Well ROHN FED 1324-2H
Company:	VERDAD RESOURCES	TVD Reference:	RKB = 16' @ 5059.00usft (RIG)
Project:	WATTENBERG FIELD	MD Reference:	RKB = 16' @ 5059.00usft (RIG)
Site:	9N-60W-13 ROHN FED 1324 PAD	North Reference:	True
Well:	ROHN FED 1324-2H	Survey Calculation Method:	Minimum Curvature
Wellbore:	Wellbore #1		
Design:	Design #3		

Planned Survey

Measured Depth (usft)	Inclination (°)	Azimuth (°)	Vertical Depth (usft)	+N/-S (usft)	+E/-W (usft)	Vertical Section (usft)	Dogleg Rate (°/100usft)	Build Rate (°/100usft)	Turn Rate (°/100usft)
0.00	0.00	0.00	0.00	0.00	0.00	0.00	0.00	0.00	0.00
100.00	0.00	0.00	100.00	0.00	0.00	0.00	0.00	0.00	0.00
200.00	0.00	0.00	200.00	0.00	0.00	0.00	0.00	0.00	0.00
250.00	0.00	0.00	250.00	0.00	0.00	0.00	0.00	0.00	0.00
Begin Nudge @ 250.00ft									
300.00	1.00	261.60	300.00	-0.06	-0.43	0.06	2.00	2.00	0.00
400.00	3.00	261.60	399.93	-0.57	-3.88	0.53	2.00	2.00	0.00
500.00	5.00	261.60	499.68	-1.59	-10.78	1.48	2.00	2.00	0.00
600.00	7.00	261.60	599.13	-3.12	-21.12	2.89	2.00	2.00	0.00
700.00	9.00	261.60	698.15	-5.15	-34.89	4.77	2.00	2.00	0.00
800.00	11.00	261.60	796.63	-7.69	-52.07	7.13	2.00	2.00	0.00
900.00	13.00	261.60	894.44	-10.73	-72.64	9.94	2.00	2.00	0.00
1,000.00	15.00	261.60	991.46	-14.26	-96.57	13.21	2.00	2.00	0.00
1,100.00	17.00	261.60	1,087.58	-18.29	-123.83	16.95	2.00	2.00	0.00
1,200.00	19.00	261.60	1,182.68	-22.80	-154.40	21.13	2.00	2.00	0.00
1,300.00	21.00	261.60	1,276.65	-27.80	-188.24	25.76	2.00	2.00	0.00
1,400.00	23.00	261.60	1,369.36	-33.27	-225.29	30.83	2.00	2.00	0.00
1,500.00	25.00	261.60	1,460.71	-39.21	-265.53	36.33	2.00	2.00	0.00
1,553.00	26.06	261.60	1,508.54	-42.55	-288.13	39.43	2.00	2.00	0.00
Hold Tangent @ 1553.00ft									
1,600.00	26.06	261.60	1,550.76	-45.56	-308.55	42.22	0.00	0.00	0.00
1,700.00	26.06	261.60	1,640.59	-51.98	-352.01	48.17	0.00	0.00	0.00
1,770.58	26.06	261.60	1,704.00	-56.51	-382.69	52.37	0.00	0.00	0.00
9 5/8"									
1,800.00	26.06	261.60	1,730.43	-58.40	-395.47	54.12	0.00	0.00	0.00
1,900.00	26.06	261.60	1,820.26	-64.82	-438.93	60.06	0.00	0.00	0.00
2,000.00	26.06	261.60	1,910.09	-71.23	-482.39	66.01	0.00	0.00	0.00
2,100.00	26.06	261.60	1,999.93	-77.65	-525.85	71.96	0.00	0.00	0.00
2,200.00	26.06	261.60	2,089.76	-84.07	-569.31	77.90	0.00	0.00	0.00
2,300.00	26.06	261.60	2,179.59	-90.49	-612.77	83.85	0.00	0.00	0.00
2,400.00	26.06	261.60	2,269.43	-96.90	-656.23	89.80	0.00	0.00	0.00
2,500.00	26.06	261.60	2,359.26	-103.32	-699.69	95.74	0.00	0.00	0.00
2,600.00	26.06	261.60	2,449.09	-109.74	-743.15	101.69	0.00	0.00	0.00
2,700.00	26.06	261.60	2,538.93	-116.16	-786.61	107.64	0.00	0.00	0.00
2,800.00	26.06	261.60	2,628.76	-122.57	-830.07	113.59	0.00	0.00	0.00
2,900.00	26.06	261.60	2,718.59	-128.99	-873.53	119.53	0.00	0.00	0.00
3,000.00	26.06	261.60	2,808.43	-135.41	-916.99	125.48	0.00	0.00	0.00
3,100.00	26.06	261.60	2,898.26	-141.83	-960.45	131.43	0.00	0.00	0.00
3,200.00	26.06	261.60	2,988.09	-148.24	-1,003.91	137.37	0.00	0.00	0.00
3,300.00	26.06	261.60	3,077.93	-154.66	-1,047.37	143.32	0.00	0.00	0.00
3,400.00	26.06	261.60	3,167.76	-161.08	-1,090.83	149.27	0.00	0.00	0.00
3,500.00	26.06	261.60	3,257.59	-167.50	-1,134.29	155.21	0.00	0.00	0.00
3,600.00	26.06	261.60	3,347.43	-173.92	-1,177.75	161.16	0.00	0.00	0.00
3,700.00	26.06	261.60	3,437.26	-180.33	-1,221.21	167.11	0.00	0.00	0.00
3,800.00	26.06	261.60	3,527.09	-186.75	-1,264.67	173.05	0.00	0.00	0.00
3,900.00	26.06	261.60	3,616.93	-193.17	-1,308.13	179.00	0.00	0.00	0.00
4,000.00	26.06	261.60	3,706.76	-199.59	-1,351.59	184.95	0.00	0.00	0.00
4,100.00	26.06	261.60	3,796.59	-206.00	-1,395.05	190.90	0.00	0.00	0.00
4,200.00	26.06	261.60	3,886.43	-212.42	-1,438.51	196.84	0.00	0.00	0.00
4,300.00	26.06	261.60	3,976.26	-218.84	-1,481.97	202.79	0.00	0.00	0.00
4,400.00	26.06	261.60	4,066.09	-225.26	-1,525.43	208.74	0.00	0.00	0.00
4,500.00	26.06	261.60	4,155.93	-231.67	-1,568.89	214.68	0.00	0.00	0.00
4,600.00	26.06	261.60	4,245.76	-238.09	-1,612.35	220.63	0.00	0.00	0.00

VERDAD RESOURCES

Planning Report

Database:	EDM 5000.16 Single User Db	Local Co-ordinate Reference:	Well ROHN FED 1324-2H
Company:	VERDAD RESOURCES	TVD Reference:	RKB = 16' @ 5059.00usft (RIG)
Project:	WATTENBERG FIELD	MD Reference:	RKB = 16' @ 5059.00usft (RIG)
Site:	9N-60W-13 ROHN FED 1324 PAD	North Reference:	True
Well:	ROHN FED 1324-2H	Survey Calculation Method:	Minimum Curvature
Wellbore:	Wellbore #1		
Design:	Design #3		

Planned Survey									
Measured Depth (usft)	Inclination (°)	Azimuth (°)	Vertical Depth (usft)	+N/-S (usft)	+E/-W (usft)	Vertical Section (usft)	Dogleg Rate (°/100usft)	Build Rate (°/100usft)	Turn Rate (°/100usft)
4,700.00	26.06	261.60	4,335.60	-244.51	-1,655.81	226.58	0.00	0.00	0.00
4,800.00	26.06	261.60	4,425.43	-250.93	-1,699.27	232.52	0.00	0.00	0.00
4,900.00	26.06	261.60	4,515.26	-257.34	-1,742.73	238.47	0.00	0.00	0.00
5,000.00	26.06	261.60	4,605.10	-263.76	-1,786.19	244.42	0.00	0.00	0.00
5,100.00	26.06	261.60	4,694.93	-270.18	-1,829.65	250.37	0.00	0.00	0.00
5,200.00	26.06	261.60	4,784.76	-276.60	-1,873.11	256.31	0.00	0.00	0.00
5,300.00	26.06	261.60	4,874.60	-283.01	-1,916.57	262.26	0.00	0.00	0.00
5,400.00	26.06	261.60	4,964.43	-289.43	-1,960.03	268.21	0.00	0.00	0.00
5,500.00	26.06	261.60	5,054.26	-295.85	-2,003.49	274.15	0.00	0.00	0.00
5,600.00	26.06	261.60	5,144.10	-302.27	-2,046.95	280.10	0.00	0.00	0.00
5,700.00	26.06	261.60	5,233.93	-308.68	-2,090.41	286.05	0.00	0.00	0.00
5,800.00	26.06	261.60	5,323.76	-315.10	-2,133.87	291.99	0.00	0.00	0.00
5,900.00	26.06	261.60	5,413.60	-321.52	-2,177.33	297.94	0.00	0.00	0.00
6,000.00	26.06	261.60	5,503.43	-327.94	-2,220.79	303.89	0.00	0.00	0.00
6,100.00	26.06	261.60	5,593.26	-334.36	-2,264.25	309.83	0.00	0.00	0.00
6,200.00	26.06	261.60	5,683.10	-340.77	-2,307.71	315.78	0.00	0.00	0.00
6,300.00	26.06	261.60	5,772.93	-347.19	-2,351.17	321.73	0.00	0.00	0.00
6,400.00	26.06	261.60	5,862.76	-353.61	-2,394.63	327.68	0.00	0.00	0.00
6,500.00	26.06	261.60	5,952.60	-360.03	-2,438.09	333.62	0.00	0.00	0.00
6,526.21	26.06	261.60	5,976.14	-361.71	-2,449.48	335.18	0.00	0.00	0.00
KOP @ 6526.21ft :: DLS = 9°/100'									
6,600.00	27.61	247.26	6,042.05	-370.70	-2,481.32	343.82	9.00	2.10	-19.43
6,700.00	31.72	231.00	6,129.07	-396.25	-2,523.21	368.92	9.00	4.11	-16.26
6,800.00	37.42	218.67	6,211.48	-436.59	-2,562.70	408.84	9.00	5.70	-12.33
6,900.00	44.09	209.39	6,287.26	-490.73	-2,598.83	462.58	9.00	6.67	-9.28
7,000.00	51.35	202.18	6,354.54	-557.34	-2,630.71	528.84	9.00	7.26	-7.21
7,100.00	58.97	196.33	6,411.67	-634.78	-2,657.55	605.98	9.00	7.62	-5.85
7,200.00	66.81	191.36	6,457.23	-721.13	-2,678.69	692.10	9.00	7.84	-4.97
7,300.00	74.79	186.95	6,490.11	-814.28	-2,693.60	785.08	9.00	7.98	-4.41
7,400.00	82.85	182.86	6,509.49	-911.92	-2,701.93	882.63	9.00	8.06	-4.09
7,488.34	90.00	179.38	6,515.00	-1,000.00	-2,703.64	970.69	9.00	8.09	-3.94
TPZ @ 7488.34ft									
7,500.00	90.00	179.38	6,515.00	-1,011.66	-2,703.52	982.35	0.00	0.00	0.00
7,600.00	90.00	179.38	6,515.00	-1,111.65	-2,702.43	1,082.35	0.00	0.00	0.00
7,700.00	90.00	179.38	6,515.00	-1,211.65	-2,701.34	1,182.35	0.00	0.00	0.00
7,800.00	90.00	179.38	6,515.00	-1,311.64	-2,700.25	1,282.35	0.00	0.00	0.00
7,900.00	90.00	179.38	6,515.00	-1,411.64	-2,699.16	1,382.35	0.00	0.00	0.00
8,000.00	90.00	179.38	6,515.00	-1,511.63	-2,698.08	1,482.35	0.00	0.00	0.00
8,100.00	90.00	179.38	6,515.00	-1,611.62	-2,696.99	1,582.35	0.00	0.00	0.00
8,200.00	90.00	179.38	6,515.00	-1,711.62	-2,695.90	1,682.35	0.00	0.00	0.00
8,300.00	90.00	179.38	6,515.00	-1,811.61	-2,694.81	1,782.35	0.00	0.00	0.00
8,400.00	90.00	179.38	6,515.00	-1,911.61	-2,693.73	1,882.35	0.00	0.00	0.00
8,500.00	90.00	179.38	6,515.00	-2,011.60	-2,692.64	1,982.35	0.00	0.00	0.00
8,600.00	90.00	179.38	6,515.00	-2,111.59	-2,691.55	2,082.35	0.00	0.00	0.00
8,700.00	90.00	179.38	6,515.00	-2,211.59	-2,690.46	2,182.35	0.00	0.00	0.00
8,800.00	90.00	179.38	6,515.00	-2,311.58	-2,689.37	2,282.35	0.00	0.00	0.00
8,900.00	90.00	179.38	6,515.00	-2,411.58	-2,688.29	2,382.35	0.00	0.00	0.00
9,000.00	90.00	179.38	6,515.00	-2,511.57	-2,687.20	2,482.35	0.00	0.00	0.00
9,100.00	90.00	179.38	6,515.00	-2,611.56	-2,686.11	2,582.35	0.00	0.00	0.00
9,200.00	90.00	179.38	6,515.00	-2,711.56	-2,685.02	2,682.35	0.00	0.00	0.00
9,300.00	90.00	179.38	6,515.00	-2,811.55	-2,683.93	2,782.35	0.00	0.00	0.00
9,400.00	90.00	179.38	6,515.00	-2,911.55	-2,682.85	2,882.35	0.00	0.00	0.00
9,500.00	90.00	179.38	6,515.00	-3,011.54	-2,681.76	2,982.35	0.00	0.00	0.00
9,600.00	90.00	179.38	6,515.00	-3,111.54	-2,680.67	3,082.35	0.00	0.00	0.00

VERDAD RESOURCES

Planning Report

Database:	EDM 5000.16 Single User Db	Local Co-ordinate Reference:	Well ROHN FED 1324-2H
Company:	VERDAD RESOURCES	TVD Reference:	RKB = 16' @ 5059.00usft (RIG)
Project:	WATTENBERG FIELD	MD Reference:	RKB = 16' @ 5059.00usft (RIG)
Site:	9N-60W-13 ROHN FED 1324 PAD	North Reference:	True
Well:	ROHN FED 1324-2H	Survey Calculation Method:	Minimum Curvature
Wellbore:	Wellbore #1		
Design:	Design #3		

Planned Survey										
Measured Depth (usft)	Inclination (°)	Azimuth (°)	Vertical Depth (usft)	+N/-S (usft)	+E/-W (usft)	Vertical Section (usft)	Dogleg Rate (°/100usft)	Build Rate (°/100usft)	Turn Rate (°/100usft)	
9,700.00	90.00	179.38	6,515.00	-3,211.53	-2,679.58	3,182.35	0.00	0.00	0.00	
9,800.00	90.00	179.38	6,515.00	-3,311.52	-2,678.50	3,282.35	0.00	0.00	0.00	
9,900.00	90.00	179.38	6,515.00	-3,411.52	-2,677.41	3,382.35	0.00	0.00	0.00	
10,000.00	90.00	179.38	6,515.00	-3,511.51	-2,676.32	3,482.35	0.00	0.00	0.00	
10,100.00	90.00	179.38	6,515.00	-3,611.51	-2,675.23	3,582.35	0.00	0.00	0.00	
10,200.00	90.00	179.38	6,515.00	-3,711.50	-2,674.14	3,682.35	0.00	0.00	0.00	
10,300.00	90.00	179.38	6,515.00	-3,811.49	-2,673.06	3,782.35	0.00	0.00	0.00	
10,400.00	90.00	179.38	6,515.00	-3,911.49	-2,671.97	3,882.35	0.00	0.00	0.00	
10,500.00	90.00	179.38	6,515.00	-4,011.48	-2,670.88	3,982.35	0.00	0.00	0.00	
10,600.00	90.00	179.38	6,515.00	-4,111.48	-2,669.79	4,082.35	0.00	0.00	0.00	
10,700.00	90.00	179.38	6,515.00	-4,211.47	-2,668.70	4,182.35	0.00	0.00	0.00	
10,800.00	90.00	179.38	6,515.00	-4,311.46	-2,667.62	4,282.35	0.00	0.00	0.00	
10,900.00	90.00	179.38	6,515.00	-4,411.46	-2,666.53	4,382.35	0.00	0.00	0.00	
11,000.00	90.00	179.38	6,515.00	-4,511.45	-2,665.44	4,482.35	0.00	0.00	0.00	
11,100.00	90.00	179.38	6,515.00	-4,611.45	-2,664.35	4,582.35	0.00	0.00	0.00	
11,200.00	90.00	179.38	6,515.00	-4,711.44	-2,663.27	4,682.35	0.00	0.00	0.00	
11,300.00	90.00	179.38	6,515.00	-4,811.43	-2,662.18	4,782.35	0.00	0.00	0.00	
11,400.00	90.00	179.38	6,515.00	-4,911.43	-2,661.09	4,882.35	0.00	0.00	0.00	
11,500.00	90.00	179.38	6,515.00	-5,011.42	-2,660.00	4,982.35	0.00	0.00	0.00	
11,600.00	90.00	179.38	6,515.00	-5,111.42	-2,658.91	5,082.35	0.00	0.00	0.00	
11,700.00	90.00	179.38	6,515.00	-5,211.41	-2,657.83	5,182.35	0.00	0.00	0.00	
11,800.00	90.00	179.38	6,515.00	-5,311.41	-2,656.74	5,282.35	0.00	0.00	0.00	
11,900.00	90.00	179.38	6,515.00	-5,411.40	-2,655.65	5,382.35	0.00	0.00	0.00	
12,000.00	90.00	179.38	6,515.00	-5,511.39	-2,654.56	5,482.35	0.00	0.00	0.00	
12,100.00	90.00	179.38	6,515.00	-5,611.39	-2,653.47	5,582.35	0.00	0.00	0.00	
12,200.00	90.00	179.38	6,515.00	-5,711.38	-2,652.39	5,682.35	0.00	0.00	0.00	
12,300.00	90.00	179.38	6,515.00	-5,811.38	-2,651.30	5,782.35	0.00	0.00	0.00	
12,400.00	90.00	179.38	6,515.00	-5,911.37	-2,650.21	5,882.35	0.00	0.00	0.00	
12,500.00	90.00	179.38	6,515.00	-6,011.36	-2,649.12	5,982.35	0.00	0.00	0.00	
12,600.00	90.00	179.38	6,515.00	-6,111.36	-2,648.04	6,082.35	0.00	0.00	0.00	
12,700.00	90.00	179.38	6,515.00	-6,211.35	-2,646.95	6,182.35	0.00	0.00	0.00	
12,800.00	90.00	179.38	6,515.00	-6,311.35	-2,645.86	6,282.35	0.00	0.00	0.00	
12,900.00	90.00	179.38	6,515.00	-6,411.34	-2,644.77	6,382.35	0.00	0.00	0.00	
13,000.00	90.00	179.38	6,515.00	-6,511.33	-2,643.68	6,482.35	0.00	0.00	0.00	
13,100.00	90.00	179.38	6,515.00	-6,611.33	-2,642.60	6,582.35	0.00	0.00	0.00	
13,200.00	90.00	179.38	6,515.00	-6,711.32	-2,641.51	6,682.35	0.00	0.00	0.00	
13,300.00	90.00	179.38	6,515.00	-6,811.32	-2,640.42	6,782.35	0.00	0.00	0.00	
13,400.00	90.00	179.38	6,515.00	-6,911.31	-2,639.33	6,882.35	0.00	0.00	0.00	
13,500.00	90.00	179.38	6,515.00	-7,011.30	-2,638.24	6,982.35	0.00	0.00	0.00	
13,600.00	90.00	179.38	6,515.00	-7,111.30	-2,637.16	7,082.35	0.00	0.00	0.00	
13,700.00	90.00	179.38	6,515.00	-7,211.29	-2,636.07	7,182.35	0.00	0.00	0.00	
13,800.00	90.00	179.38	6,515.00	-7,311.29	-2,634.98	7,282.35	0.00	0.00	0.00	
13,900.00	90.00	179.38	6,515.00	-7,411.28	-2,633.89	7,382.35	0.00	0.00	0.00	
14,000.00	90.00	179.38	6,515.00	-7,511.28	-2,632.81	7,482.35	0.00	0.00	0.00	
14,100.00	90.00	179.38	6,515.00	-7,611.27	-2,631.72	7,582.35	0.00	0.00	0.00	
14,200.00	90.00	179.38	6,515.00	-7,711.26	-2,630.63	7,682.35	0.00	0.00	0.00	
14,300.00	90.00	179.38	6,515.00	-7,811.26	-2,629.54	7,782.35	0.00	0.00	0.00	
14,400.00	90.00	179.38	6,515.00	-7,911.25	-2,628.45	7,882.35	0.00	0.00	0.00	
14,500.00	90.00	179.38	6,515.00	-8,011.25	-2,627.37	7,982.35	0.00	0.00	0.00	
14,600.00	90.00	179.38	6,515.00	-8,111.24	-2,626.28	8,082.35	0.00	0.00	0.00	
14,700.00	90.00	179.38	6,515.00	-8,211.23	-2,625.19	8,182.35	0.00	0.00	0.00	
14,779.32	90.00	179.38	6,515.00	-8,290.55	-2,624.33	8,261.67	0.00	0.00	0.00	
BPZ @ 14779.32ft										
14,800.00	90.00	179.38	6,515.00	-8,311.23	-2,624.10	8,282.35	0.00	0.00	0.00	

VERDAD RESOURCES

Planning Report

Database:	EDM 5000.16 Single User Db	Local Co-ordinate Reference:	Well ROHN FED 1324-2H
Company:	VERDAD RESOURCES	TVD Reference:	RKB = 16' @ 5059.00usft (RIG)
Project:	WATTENBERG FIELD	MD Reference:	RKB = 16' @ 5059.00usft (RIG)
Site:	9N-60W-13 ROHN FED 1324 PAD	North Reference:	True
Well:	ROHN FED 1324-2H	Survey Calculation Method:	Minimum Curvature
Wellbore:	Wellbore #1		
Design:	Design #3		

Planned Survey									
Measured Depth (usft)	Inclination (°)	Azimuth (°)	Vertical Depth (usft)	+N/-S (usft)	+E/-W (usft)	Vertical Section (usft)	Dogleg Rate (°/100usft)	Build Rate (°/100usft)	Turn Rate (°/100usft)
14,899.19	90.00	179.38	6,515.00	-8,410.41	-2,623.02	8,381.53	0.00	0.00	0.00
TD Well @ 14899.19ft									

Casing Points				
Measured Depth (usft)	Vertical Depth (usft)	Name	Casing Diameter (")	Hole Diameter (")
1,770.58	1,704.00	9 5/8"	9-5/8	13-1/2

Plan Annotations				
Measured Depth (usft)	Vertical Depth (usft)	Local Coordinates		Comment
		+N/-S (usft)	+E/-W (usft)	
250.00	250.00	0.00	0.00	Begin Nudge @ 250.00ft
1,553.00	1,508.54	-42.55	-288.13	Hold Tangent @ 1553.00ft
6,526.21	5,976.14	-361.71	-2,449.48	KOP @ 6526.21ft :: DLS = 9°/100'
7,488.34	6,515.00	-1,000.00	-2,703.64	TPZ @ 7488.34ft
14,779.32	6,515.00	-8,290.55	-2,624.33	BPZ @ 14779.32ft
14,899.19	6,515.00	-8,410.41	-2,623.02	TD Well @ 14899.19ft