

Inspection Photos
Operator: Catamount
API: 067-05434
Date: 5/10/2021



Photo 1. View of the project area from the well pad entrance facing southward.

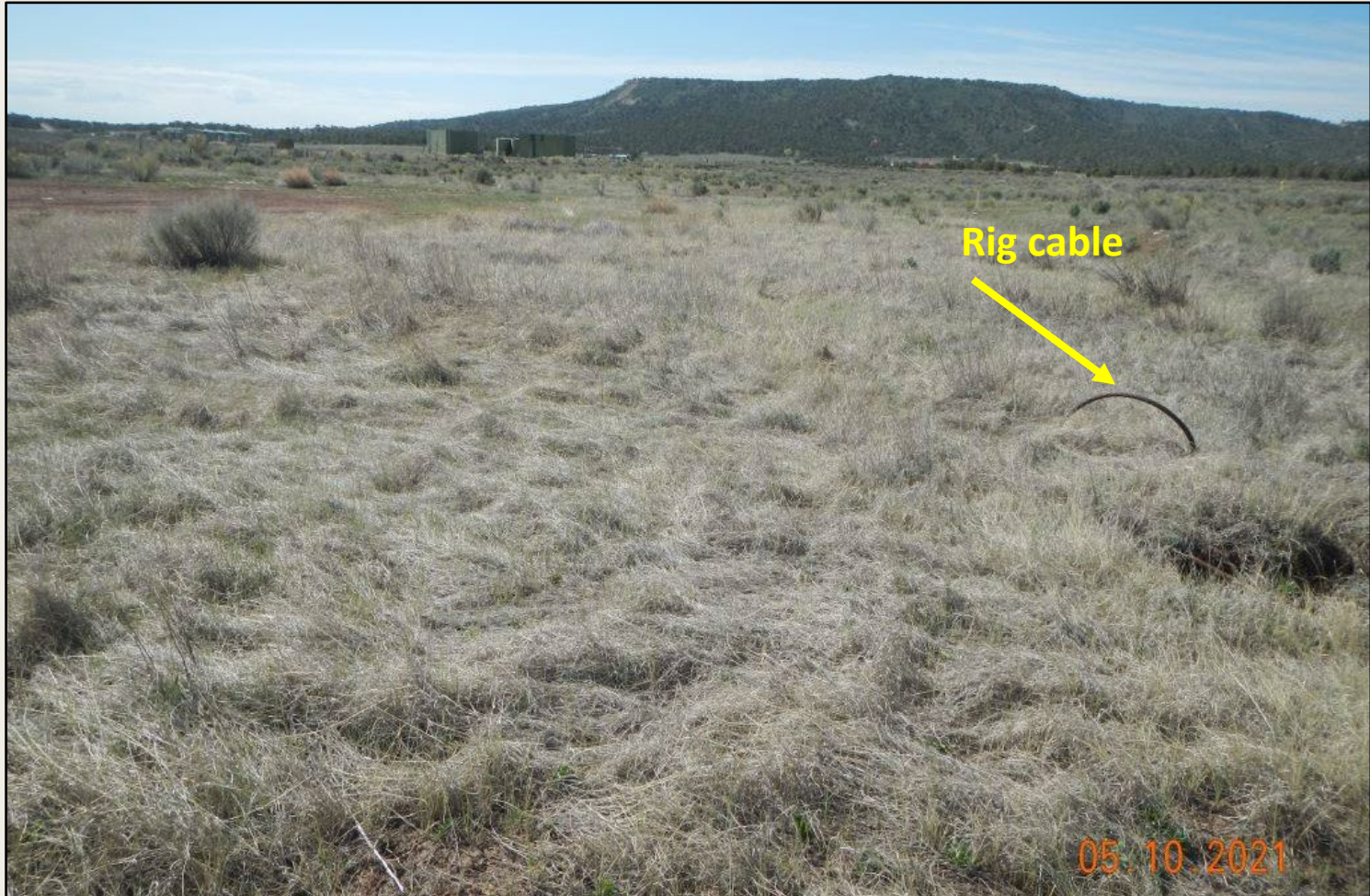


Photo 2. View of the western project area from the northwestern corner facing southward. Revegetation is established within the interim reclamation areas. Rig cable needs to be removed.



Photo 3. View of the northern project area from the northwestern corner facing eastward.



Photo 4. View of the reference area comprised of sagebrush shrubland with scattered pinyon and juniper trees, squirreltail, western wheatgrass, and forbs such as penstemon, and phlox.